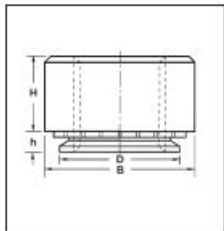


Gama disponible tuercas auto-insertables en acero

Referencia	Tipo	mm métrico	mm largo	mm grueso mínimo chapa acero	mm agujero
M3T-1-AFI	CM3-1	3	no	1,0	4,3
M4T-1-AFI	CM4-1	4	no	1,0	5,4
M5T-1-AFI	CM5-1	5	no	1,0	6,4
M5T-2-AFI	CM5-2	5	no	1,4	6,4
M6T-1-AFI	CM6-1	6	no	1,4	8,8
M8T-1-AFI	CM8-1	8	no	1,4	10,5

Información técnica gama completa tuercas auto-insertables (algunas referencias sujetas a disponibilidad)



- C** - ACCIAIO ZINCATO / STEEL WHITE ZINC
per lamiere fino a 80 HRB / sheet hardness max 80 HRB
- CS** - ACCIAIO INOX / STAINLESS STEEL
per lamiere fino a 70 HRB / sheet hardness max 70 HRB

Filetto per Passo Thread Size x Pitch	Tipo / Type			h Max	Spessore min. Lamiera Min. Sheet Thickness	H ±0.25	B ±0.25	D Max.	Foro Hole +0.08	Distanza Minima dal Bordo Min. Dist. to Edge
	Acciaio Zincato Steel white zinc	Acciaio Inox Stainless steel	Inox Indurito Hardening stainless steel							
M2x0.4	C M2 - 0	CS M2 - 0	-	0.76	0.8	1.5	6.3	4.22	4.25	4.8
	C M2 - 1	CS M2 - 1	-	0.97	1					
	C M2 - 2	CS M2 - 2	-	1.37	1.4					
	C M2 - 3	CS M2 - 3	-	2.21	2.3					
M2.5x0.45	C M2.5 - 0	CS M2.5 - 0	-	0.76	0.8	1.5	6.3	4.22	4.25	4.8
	C M2.5 - 1	CS M2.5 - 1	-	0.97	1					
	C M2.5 - 2	CS M2.5 - 2	-	1.37	1.4					
	C M2.5 - 3	CS M2.5 - 3	-	2.21	2.3					
M3x0.5	C M3 - 0	CS M3 - 0	CSP M3 - 0	0.76	0.8	1.5	6.3	4.22	4.25	4.8
	C M3 - 1	CS M3 - 1	CSP M3 - 1	0.97	1					
	C M3 - 2	CS M3 - 2	CSP M3 - 2	1.37	1.4					
	C M3 - 3	CS M3 - 3	-	2.21	2.3					
M3x0.5	C 35M3 - 0	CS 35M3 - 0	-	0.76	0.8	1.71	7.1	4.72	4.75	4.8
	C 35M3 - 1	CS 35M3 - 1	-	0.97	1					
	C 35M3 - 2	CS 35M3 - 2	-	1.37	1.4					
	C 35M3 - 3	CS 35M3 - 3	-	2.21	2.3					
M4x0.7	C M4 - 0	CS M4 - 0	CSP M4 - 0	0.76	0.8	2.0	7.9	5.38	5.4	6.9
	C M4 - 1	CS M4 - 1	CSP M4 - 1	0.97	1.0					
	C M4 - 2	CS M4 - 2	CSP M4 - 2	1.37	1.4					
	C M4 - 3	CS M4 - 3	-	2.21	2.3					

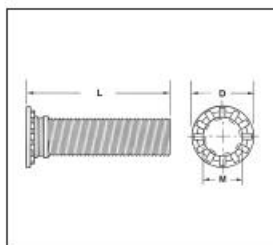


Gama disponible pernos auto-insertables en acero

Referencia	Tipo	mm métrico	mm largo	mm grueso mínimo chapa acero	mm agujero
G3-A-08FI	CHM3-08	3	8	1,5	3,0
G3-A-10FI	CHM3-10	3	10	1,5	3,0
G3-A-12FI	CHM3-12	3	12	1,5	3,0
G3-A-14FI	CHM3-14	3	14	1,5	3,0
G3-A-15FI	CHM3-15	3	15	1,5	3,0
G3-A-16FI	CHM3-16	3	16	1,5	3,0
G3-A-18FI	CHM3-18	3	18	1,5	3,0
G3-A-20FI	CHM3-20	3	20	1,5	3,0
G4-A-08FI	CHM4-08	4	8	1,5	4,0
G4-A-10FI	CHM4-10	4	10	1,5	4,0
G4-A-12FI	CHM4-12	4	12	1,5	4,0
G4-A-14FI	CHM4-14	4	14	1,5	4,0
G4-A-15FI	CHM4-15	4	15	1,5	4,0
G4-A-16FI	CHM4-16	4	16	1,5	4,0
G4-A-18FI	CHM4-18	4	18	1,5	4,0
G4-A-20FI	CHM4-20	4	20	1,5	4,0
G5-A-08FI	CHM5-08	5	8	1,5	5,0
G5-A-10FI	CHM5-10	5	10	1,5	5,0
G5-A-12FI	CHM5-12	5	12	1,5	5,0
G5-A-14FI	CHM5-14	5	14	1,5	5,0
G5-A-15FI	CHM5-15	5	15	1,5	5,0
G5-A-16FI	CHM5-16	5	16	1,5	5,0
G5-A-18FI	CHM5-18	5	18	1,5	5,0
G5-A-20FI	CHM5-20	5	20	1,5	5,0
G6-A-08FI	CHM6-08	6	8	2,2	6,0
G6-A-10FI	CHM6-10	6	10	2,2	6,0
G6-A-12FI	CHM6-12	6	12	2,2	6,0
G6-A-14FI	CHM6-14	6	14	2,2	6,0
G6-A-15FI	CHM6-15	6	15	2,2	6,0
G6-A-16FI	CHM6-16	6	16	2,2	6,0
G6-A-18FI	CHM6-18	6	18	2,2	6,0
G6-A-20FI	CHM6-20	6	20	2,2	6,0
G8-A-10FI	CHM8-10	8	10	2,4	8,0
G8-A-12FI	CHM8-12	8	12	2,4	8,0
G8-A-15FI	CHM8-15	8	15	2,4	8,0



Información técnica gama completa pernos auto-insertables (algunas referencias sujetas a disponibilidad)



CH

CHS

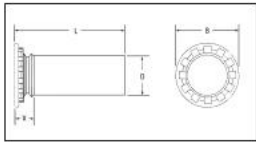
- ACCIAIO ZINCATO / STEEL WHITE Z INC
per lamiera fino a 80 HRB /sheet hard ness max 80 HRB

- ACCIAIO INOX / STAINLESS STEEL
per lamiere fino a 70 HRB /sheet hardness max 70 HRB

Caratteristiche e Dimensioni Specifications and Dimensions																						
Filetto Thread code Iso 6H	Tipo Type	Lunghezza L Length ±0.15														D ±0.4	Foro Hole +0.08	Dist. Min. dal Bordo Min. Dist. to edge	Spes- min. Lamiera Min. Sheet Thickness			
		6	8	10	12	15	16	18	20	22	25	28	30	35	38					40	50	
M2.5 x 0.45	CH M2.5	•	•	•	•	•	•	•	•	•	•								4.1	2.5	5.4	1
	CHS M2.5																					
	CHA M2.5																					
M3 x 0.5	CH M3	•	•	•	•	•	•	•	•	•	•	•	•	•					4.6	3.0	5.6	1
	CHS M3																					
	CHA M3																					
M4 x 0.7	CH M4	•	•	•	•	•	•	•	•	•	•	•	•	•	•				5.9	4.0	7.2	1
	CHS M4																					
	CHA M4																					
M5 x 0.8	CH M5	•	•	•	•	•	•	•	•	•	•	•	•	•	•				6.5	5.0	7.2	1
	CHS M5																					
	CHA M5																					
M6 x 1.0	CH M6		•	•	•	•	•	•	•	•	•	•	•	•	•	•			8.2	6.0	7.9	1.6
	CHS M6																					
	CHA M6																					
M8 x 1.25	CH M8			•	•	•	•	•	•	•	•	•	•	•	•	•			9.6	8.0	9.6	2.4
	CHS M8																					
	CHA M8																					



Información técnica gama completa pernos lisos auto-insertables (algunas referencias sujetas a disponibilidad)

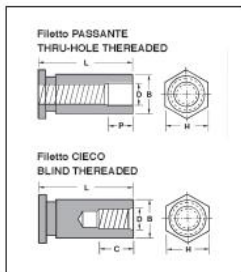


CHD - ACCIAIO ZINCATO / STEEL WHITE Z INC
per lamiera fino a 80 HRB / sheet hardness max 80 HRB

CHSD - ACCIAIO INOX / STAINLESS STEEL
per lamiera fino a 70 HRB / sheet hardness max 70 HRB

Caratteristiche e Dimensioni Specifications and Dimensions																	
Diametro perno Pin dia.	Tipo Type	Lunghezza L Length ±0.15											D ±0.4	Foro Hole +0.08	Dist. Min. dal Bordo Min. Dist. to edge	Spesse- min. Lamiera Min. Sheet Thickness	
		6	8	10	12	15	16	18	20	25	30	35					
3 mm	CHD M3 CHDS M3	•	•	•	•	•	•	•	•	•	•	•	•	5.3	3.5	6.4	1
4 mm	CHD M4 CHDS M4	•	•	•	•	•	•	•	•	•	•	•	•	6	4.1	7.1	1
5 mm	CHD M5 CHDS M5	•	•	•	•	•	•	•	•	•	•	•	•	7.5	5.5	7.6	1

Información técnica gama completa columna rosca interior auto-insertables (algunas referencias sujetas a disponibilidad)



CFSSO - ACCIAIO ZINCATO / HEAT TREATED
Filetto PASSANTE
Thru-hole threaded

CFBSO - ACCIAIO INOX / 303 STAINLESS
Filetto PASSANTE
Thru-hole threaded

Caratteristiche e Dimensioni Specifications and Dimensions																					
Filetto Thread code ISO 6H	Tipo Type	Lunghezza L Length +0.05 - 0.13													Foro Hole +0.08	B - 0.13	H	D ±0.13	Dist. Min. dal Bordo Min. Dist. to edge		
		3	4	5	6	8	10	12	14	16	18	20	22	25							
		P ±0.25 C ±0.25	0	0	0	0	0	4	4	4	8	8	8	11						11	
M2.5 x 0.45	CFSSO		•	•	•	•	•	•									42	4.19	4.8	3.2	6.0
	CFBSO																				
	CFBSO																				
	CFBSO																				
M3 x 0.5 hole 4.2	CFSSO	•	•	•	•	•	•	•	•	•	•	•	•	•	•	42	4.19	4.8	3.2	6.0	
	CFBSO																				
	CFBSO																				
	CFBSO																				
M3 x 0.5 hole 5.4	CFSSO	•	•	•	•	•	•	•	•	•	•	•	•	•	•	54	5.38	6.4	3.2	7.0	
	CFBSO																				
	CFBSO																				
	CFBSO																				
M4 x 0.7	CFSSO	•	•	•	•	•	•	•	•	•	•	•	•	•	•	72	7.11	7.9	4.8	8.0	
	CFBSO																				
	CFBSO																				
	CFBSO																				
M5 x 0.8	CFSSO	•	•	•	•	•	•	•	•	•	•	•	•	•	•	72	7.11	7.9	5.2	8.0	
	CFBSO																				
	CFBSO																				
	CFBSO																				

