



# HANDWHEELS & KNOBS

326





# HANDWHEELS & KNOBS



> Three - stars grips BPF 184 ..... Page **330 - 331**



> Four - stars grips BPF 185 ..... Page **332 - 333**



> Triangular handwheels BPF 195 ..... Page **334 - 335**



> Triangular handwheels BPF 200 ..... Page **336 - 337**



> Knurled knobs BPF 210 ..... Page **338 - 339**



> Wing grips BPF 250 ..... Page **340 - 343**



> Wing grips BPF 255 ..... Page **344 - 345**



> Wing grips BPF 258 ..... Page **346 - 349**



> T-Handles BPF 260 ..... Page **350 - 351**



> Knurled knobs BPF 270 ..... Page **352 - 355**



> Star grips BPF 280 ..... Page **356 - 357**



> Star grips BPF 320 ..... Page **358 - 361**


 > Star grips BPF 390 ..... Page **362 - 363**


 > Star grips BPF 420 ..... Page **364 - 367**


 > Flat star grips BPF 540 ..... Page **368 - 369**

 > Star grips BPF 550 ..... Page **370 - 371**


 > Star grips BPF 620 ..... Page **372 - 373**

 > Knurled handwheels BPF 640 ..... Page **374 - 375**

 > Star handwheels BPF 400 L ..... Page **376 - 377**

 > Star handwheels BPF 500 L ..... Page **378 - 379**

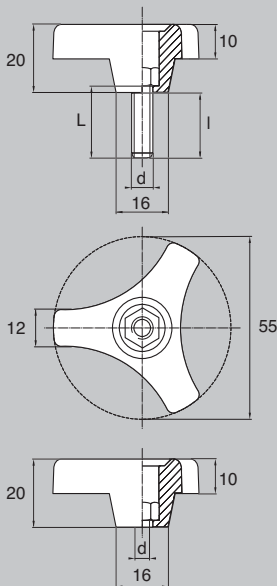
 > Star handwheels BPF 630 L ..... Page **380 - 381**

 > Star handwheels BPF 800 L ..... Page **382 - 383**

 > Special colours ..... Page **384 - 385**



# HANDWHEELS & KNOBS > BPF 184



## Male insert

d	L	l	Unit of sale	Part N° (Zinc-plated steel)
M6	10	7,0	100	BPF184610Baz
M6	12	9,0	100	BPF184612Baz
M6	16	13,0	100	BPF184616Baz
M6	20	17,0	100	BPF184620Baz
M6	25	22,0	100	BPF184625Baz
M6	30	27,0	100	BPF184630Baz
M6	35	32,0	100	BPF184635Baz
M6	40	37,0	100	BPF184640Baz
M6	45	42,0	100	BPF184645Baz
M6	50	47,0	100	BPF184650Baz
M6	60	57,0	100	BPF184660Baz
M8	10	7,5	100	BPF184810Baz
M8	12	9,5	100	BPF184812Baz
M8	16	13,5	100	BPF184816Baz
M8	20	17,5	100	BPF184820Baz
M8	25	22,5	100	BPF184825Baz
M8	30	27,5	100	BPF184830Baz
M8	35	32,5	100	BPF184835Baz
M8	40	37,5	100	BPF184840Baz
M8	45	42,5	100	BPF184845Baz
M8	50	47,5	100	BPF184850Baz
M8	60	57,5	100	BPF184860Baz
M8	70	67,5	100	BPF184870Baz
M8	80	77,5	100	BPF184880Baz

> When using a male insert we recommend a lock nut if fully tightening down to the end of the screw.

> Optional cover :

- for M6 = Part N° : 42650
- for M8 = Part N° : 42100

See cover plugs page 231.



## Other material insert : example of part N° for male insert M6 x 10 :

Stainless steel = i	Brass = ms	Aluminium = al
BPF184610Bi	BPF184610Bms	BPF184610Bal

## Female insert

d	Unit of sale	Part N° (Zinc-plated steel)
M6	100	BPF1846Baz
M8	100	BPF1848Baz

## MATERIALS - COLOURS

### STANDARD :

- Head : black Nylon.
- Insert : zinc-plated steel.
- Tolerance "l" : +/- 1 mm.

### ON REQUEST :

- Male insert : Aluminium / Titanium / Nylon / Stainless steel / Brass.
- Female insert : Aluminium / Titanium / Nylon / Stainless steel / Brass / Zinc-plated steel self-locking nut.
- Head colours : see RAL colour chart page 510 / 511. Minimum quantity on request.



Three - stars grip >>  
**BPF 184**

l = usable length

331

**Titanium = t**

**Nylon = ny**

**BPF184610Bt**

**BPF184610Bny**



Aluminium



Titanium



Nylon



Stainless steel

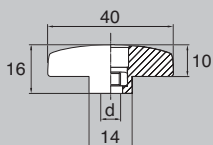
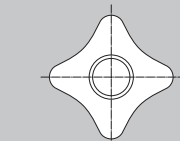
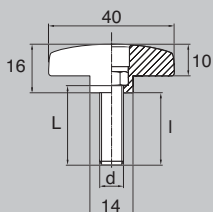


Brass



Nut





## Male insert

d	L	I	Unit of sale	Part N° (Zinc-plated steel)
M5	10	7,5	100	BPF185510Baz
M5	12	9,5	100	BPF185512Baz
M5	16	13,5	100	BPF185516Baz
M5	20	17,5	100	BPF185520Baz
M5	25	22,5	100	BPF185525Baz
M5	30	27,5	100	BPF185530Baz
M5	35	32,5	100	BPF185535Baz
M5	40	37,5	100	BPF185540Baz
M5	45	42,5	100	BPF185545Baz
M5	50	47,5	100	BPF185550Baz
M6	10	7	100	BPF185610Baz
M6	12	9	100	BPF185612Baz
M6	16	13	100	BPF185616Baz
M6	20	17	100	BPF185620Baz
M6	25	22	100	BPF185625Baz
M6	30	27	100	BPF185630Baz
M6	35	32	100	BPF185635Baz
M6	40	37	100	BPF185640Baz
M6	45	42	100	BPF185645Baz
M6	50	47	100	BPF185650Baz
M6	60	57	100	BPF185660Baz

332



> When using a male insert we recommend a lock nut if fully tightening down to the end of the screw.

Other material insert : example of part N° for male insert M5 x 10 :

Stainless steel = i	Brass = ms	Aluminium = al
BPF185510Bi	BPF185510Bms	BPF185510Bal

## Female insert

d	Unit of sale	Part N° (Zinc-plated steel)
M5	100	BPF1855Baz
M6	100	BPF1856Baz

## MATERIALS - COLOURS

### STANDARD :

- Head : black Nylon.
- Insert : zinc-plated steel.
- Tolerance "I" : +/- 1 mm.

### ON REQUEST :

- Male insert : Aluminium / Titanium / Nylon / Stainless steel / Brass.
- Female insert : Aluminium / Titanium / Nylon / Stainless steel / Brass / Zinc-plated steel self-locking nut.
- Head colours : see RAL colour chart page 510 / 511. Minimum quantity on request.



Four - stars grip >>  
**BPF 185**

l = usable length

**Titanium = t**

**Nylon = ny**

BPF185510Bt

BPF185510Bny



Aluminium



Titanium



Nylon



Stainless steel



Brass

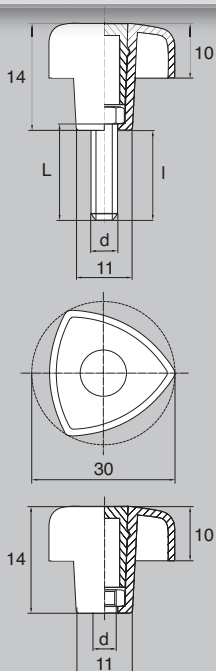


Nut





# HANDWHEELS & KNOBS > BPF 195



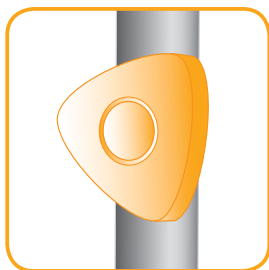
## Male insert

d	L	I	Unit of sale	Part N° (Zinc-plated steel)
M5	6	3,5	100	BPF19556Baz
M5	8	5,5	100	BPF19558Baz
M5	10	7,5	100	BPF195510Baz
M5	12	9,5	100	BPF195512Baz
M5	16	13,5	100	BPF195516Baz
M5	20	17,5	100	BPF195520Baz
M5	25	21,5	100	BPF195525Baz
M5	30	27,5	100	BPF195530Baz
M5	35	32,5	100	BPF195535Baz
M5	40	37,5	100	BPF195540Baz
M5	45	42,5	100	BPF195545Baz
M5	50	47,5	100	BPF195550Baz
M6	8	5	100	BPF19568Baz
M6	10	7	100	BPF195610Baz
M6	12	9	100	BPF195612Baz
M6	16	11	100	BPF195616Baz
M6	20	17	100	BPF195620Baz
M6	25	22	100	BPF195625Baz
M6	30	27	100	BPF195630Baz
M6	35	32	100	BPF195635Baz
M6	40	37	100	BPF195640Baz
M6	45	42	100	BPF195645Baz
M6	50	47	100	BPF195650Baz
M6	60	57	100	BPF195660Baz
M6	70	67	100	BPF195670Baz

334

> When using a male insert we recommend a lock nut if fully tightening down to the end of the screw.

(See picture page 332).



## Other material insert : example of part N° for male insert M5 x 6 :

Stainless steel = i	Brass = ms	Aluminium = al
BPF19556Bi	BPF19556Bms	BPF19556Bal

## Female insert

d	Unit of sale	Part N° (Zinc-plated steel)
M5	100	BPF1955Baz
M6	100	BPF1956Baz

## MATERIALS - COLOURS

### STANDARD :

- Head : black Nylon.
- Insert : zinc-plated steel.
- Tolerance "I" : +/- 1 mm.

### ON REQUEST :

- Male insert : Aluminium / Titanium / Nylon / Stainless steel / Brass.
- Female insert : Aluminium / Titanium / Nylon / Stainless steel / Brass / Zinc-plated steel self-locking nut.
- Head colours : see RAL colour chart page 510 / 511. Minimum quantity on request.

Triangular handwheel  
**BPF 195**



l = usable length

**Titanium = t**

BPF19556Bt

**Nylon = ny**

BPF19556Bny



Aluminium



Titanium



Nylon



Stainless steel



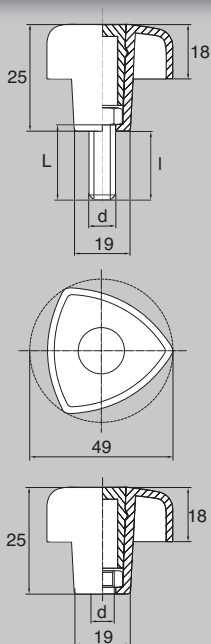
Brass



Nut



# HANDWHEELS & KNOBS > BPF 200



## Male insert

d	L	I	Unit of sale	Part N° (Zinc-plated steel)
M6	10	7	100	BPF200610Baz
M6	12	9	100	BPF200612Baz
M6	16	13	100	BPF200616Baz
M6	20	17	100	BPF200620Baz
M6	25	22	100	BPF200625Baz
M6	30	27	100	BPF200630Baz
M6	35	32	100	BPF200635Baz
M6	40	37	100	BPF200640Baz
M6	45	42	100	BPF200645Baz
M6	50	47	100	BPF200650Baz
M6	60	57	100	BPF200660Baz
M8	10	6,5	100	BPF200810Baz
M8	12	8,5	100	BPF200812Baz
M8	16	12,5	100	BPF200816Baz
M8	20	16,5	100	BPF200820Baz
M8	25	21,5	100	BPF200825Baz
M8	30	26,5	100	BPF200830Baz
M8	35	31,5	100	BPF200835Baz
M8	40	36,5	100	BPF200840Baz
M8	45	41,5	100	BPF200845Baz
M8	50	46,5	100	BPF200850Baz
M8	60	56,5	100	BPF200860Baz
M8	70	66,5	100	BPF200870Baz
M8	80	76,5	100	BPF200880Baz

Other material insert : example of part N° for male insert M6 x 10 :

Stainless steel = i	Brass = ms	Aluminium = al
BPF200610Bi	BPF200610Bms	BPF200610Bal

## Female insert

d	Unit of sale	Part N° (Zinc-plated steel)
M6	100	BPF2006Baz
M8	100	BPF2008Baz

336



> When using a male insert we recommend a lock nut if fully tightening down to the end of the screw.

## MATERIALS - COLOURS

### STANDARD :

- Head : black Nylon.
- Insert : zinc-plated steel.
- Tolerance "I" : +/- 1 mm.

### ON REQUEST :

- Male insert : Aluminium / Titanium / Nylon / Stainless steel / Brass.
- Female insert : Aluminium / Titanium / Nylon / Stainless steel / Brass / Zinc-plated steel self-locking nut.
- Head colours : see RAL colour chart page 510 / 511. Minimum quantity on request.



Triangular handwheel  
**BPF 200**



l = usable length

**Titanium = t**

BPF200610Bt

**Nylon = ny**

BPF200610Bny



Aluminium



Titanium



Nylon



Stainless steel



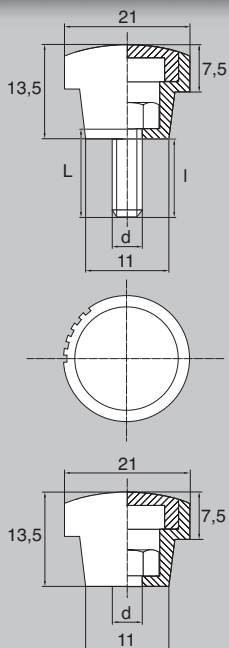
Brass



Nut



# HANDWHEELS & KNOBS > BPF 210



## Male insert

d	L	I	Unit of sale	Part N° (Zinc-plated steel)
M4	8	6	100	BPF21048Baz
M4	10	8	100	BPF210410Baz
M4	12	10	100	BPF210412Baz
M4	16	14	100	BPF210416Baz
M4	20	18	100	BPF210420Baz
M4	25	23	100	BPF210425Baz
M4	30	28	100	BPF210430Baz
M4	35	33	100	BPF210435Baz
M4	40	38	100	BPF210440Baz
M4	45	43	100	BPF210445Baz
M4	50	48	100	BPF210450Baz
M5	8	6	100	BPF21058Baz
M5	10	8	100	BPF210510Baz
M5	12	10	100	BPF210512Baz
M5	16	14	100	BPF210516Baz
M5	20	18	100	BPF210520Baz
M5	25	23	100	BPF210525Baz
M5	30	28	100	BPF210530Baz
M5	35	33	100	BPF210535Baz
M5	40	38	100	BPF210540Baz
M5	45	43	100	BPF210545Baz
M5	50	48	100	BPF210550Baz
M5	60	58	100	BPF210560Baz

338

> When using a male insert we recommend a lock nut if fully tightening down to the end of the screw.

(See picture pages 332 and 336).

## Other material insert : example of part N° for male insert M4 x 8 :

Stainless steel = i	Brass = ms	Aluminium = al
BPF21048Bi	BPF21048Bms	BPF21048Bal



## Female insert

d	Unit of sale	Part N° (Zinc-plated steel)
M4	100	BPF21048Baz
M5	100	BPF21058Baz

## MATERIALS - COLOURS

### STANDARD :

- Head : black Nylon.
- Insert : zinc-plated steel.
- Tolerance "I" : +/- 1 mm.

### ON REQUEST :

- Male insert : Aluminium / Titanium / Nylon / Stainless steel / Brass.
- Female insert : Aluminium / Titanium / Nylon / Stainless steel / Brass / Zinc-plated steel self-locking nut.
- Head colours : see RAL colour chart page 510 / 511. Minimum quantity on request.

Knurled knob  
**BPF 210**



l = usable length



**Titanium = t**

BPF21048Bt

**Nylon = ny**

BPF21048Bny

339



Aluminium



Titanium



Nylon



Stainless steel



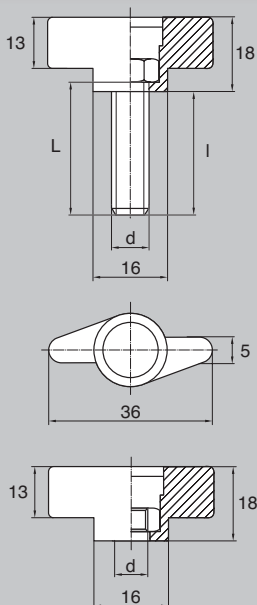
Brass



Nut



# HANDWHEELS & KNOBS > BPF 250



## Male insert

d	L	I	Unit of sale	Part N° (Zinc-plated steel)
M4	8	5	100	BPF25048Baz
M4	10	7	100	BPF250410Baz
M4	12	9	100	BPF250412Baz
M4	16	13	100	BPF250416Baz
M4	20	17	100	BPF250420Baz
M4	25	22	100	BPF250425Baz
M4	30	27	100	BPF250430Baz
M4	35	32	100	BPF250435Baz
M4	40	37	100	BPF250440Baz
M4	45	42	100	BPF250445Baz
M4	50	47	100	BPF250450Baz
M5	8	5	100	BPF25058Baz
M5	10	7	100	BPF250510Baz
M5	12	9	100	BPF250512Baz
M5	16	13	100	BPF250516Baz
M5	20	17	100	BPF250520Baz
M5	25	22	100	BPF250525Baz
M5	30	27	100	BPF250530Baz
M5	35	32	100	BPF250535Baz
M5	40	37	100	BPF250540Baz
M5	45	43	100	BPF250545Baz
M5	50	47	100	BPF250550Baz

340

> When using a male insert we recommend a lock nut if fully tightening down to the end of the screw.

(See picture pages 332 and 336).

> Continued next page.

## Other material insert : example of part N° for male insert M4 x 8 :

Stainless steel = i	Brass = ms	Aluminium = al
BPF25048Bi	BPF25048Bms	BPF25048Bal



## Female insert

d	Unit of sale	Part N° (Zinc-plated steel)
M4	100	BPF2504Baz
M5	100	BPF2505Baz
M6	100	BPF2506Baz

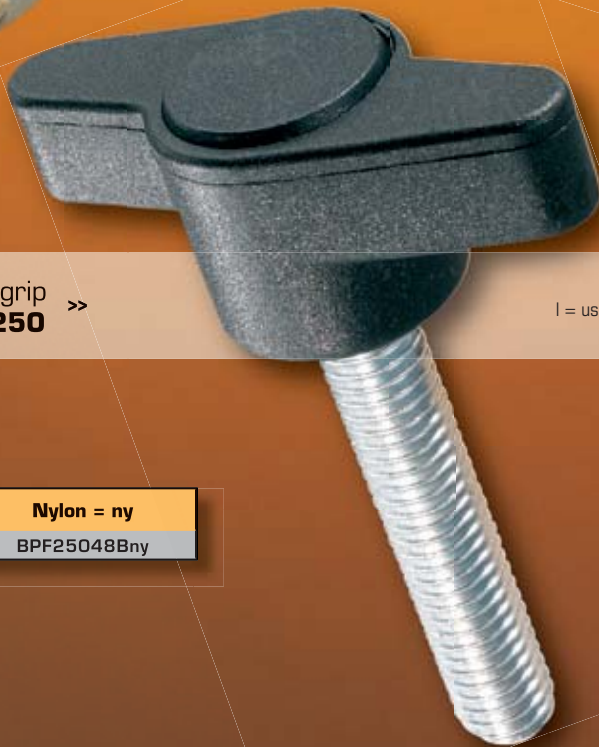
## MATERIALS - COLOURS

### STANDARD :

- Head : black Nylon.
- Insert : zinc-plated steel.
- Tolerance "I" : +/- 1 mm.

### ON REQUEST :

- Male insert : Aluminium / Titanium / Nylon / Stainless steel / Brass.
- Female insert : Aluminium / Titanium / Nylon / Stainless steel / Brass / Zinc-plated steel self-locking nut.
- Head colours : see RAL colour chart page 510 / 511. Minimum quantity on request.



Wing grip  
**BPF 250** >>

I = usable length

341

**Titanium = t**

**Nylon = ny**

BPF25048Bt

BPF25048Bny



Aluminium



Titanium



Nylon



Stainless steel



Brass

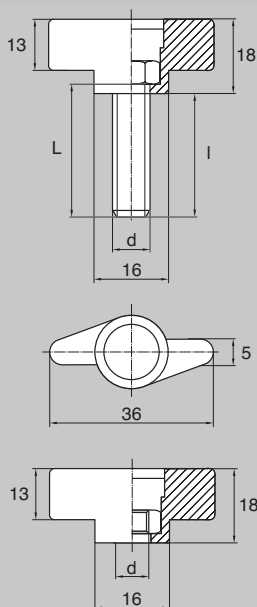


Nut





# HANDWHEELS & KNOBS > BPF 250



## Male insert

d	L	l	Unit of sale	Part N° (Zinc-plated steel)
M6	8	5	100	BPF25068Baz
M6	10	7	100	BPF250610Baz
M4	12	9	100	BPF250612Baz
M6	16	13	100	BPF250616Baz
M6	20	17	100	BPF250620Baz
M6	25	22	100	BPF250625Baz
M6	30	27	100	BPF250630Baz
M6	35	32	100	BPF250635Baz
M6	40	37	100	BPF250640Baz
M6	45	42	100	BPF250645Baz
M6	50	47	100	BPF250650Baz
M6	60	57	100	BPF250660Baz
M6	70	67	100	BPF250670Baz



342

> When using a male insert we recommend a lock nut if fully tightening down to the end of the screw.



**Other material insert : example of part N° for male insert M6 x 8 :**

Stainless steel = i	Brass = ms	Aluminium = al
BPF25068Bi	BPF25068Bms	BPF25068BaI

> Female insert : see page 340.

## MATERIALS - COLOURS

### STANDARD :

- Head : black Nylon.
- Insert : zinc-plated steel.
- Tolerance "l" : +/- 1 mm.

### ON REQUEST :

- Male insert : Aluminium / Titanium / Nylon / Stainless steel / Brass.
- Female insert : Aluminium / Titanium / Nylon / Stainless steel / Brass / Zinc-plated steel self-locking nut.
- Head colours : see RAL colour chart page 510 / 511. Minimum quantity on request.

Wing grip >>  
**BPF 250**

l = usable length



**Titanium = t**

**Nylon = ny**

**BPF25068Bt**

**BPF25068Bny**



Aluminium



Titanium



Nylon



Stainless steel



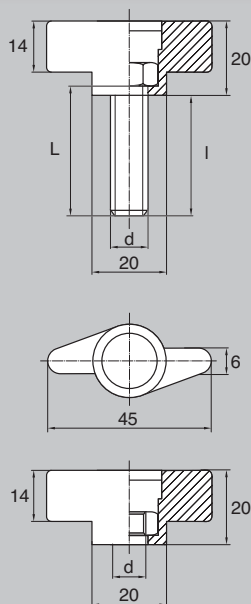
Brass



Nut



# HANDWHEELS & KNOBS > BPF 255



## Male insert

d	L	I	Unit of sale	Part N° (Zinc-plated steel)
M6	10	7	100	BPF255610Baz
M6	12	9	100	BPF255612Baz
M6	16	13	100	BPF255616Baz
M6	20	17	100	BPF255620Baz
M6	25	22	100	BPF255625Baz
M6	30	27	100	BPF255630Baz
M6	35	32	100	BPF255635Baz
M6	40	37	100	BPF255640Baz
M6	45	42	100	BPF255645Baz
M6	50	47	100	BPF255650Baz
M6	60	57	100	BPF255660Baz
M6	70	67	100	BPF255670Baz
M8	10	7	100	BPF255810Baz
M8	12	9	100	BPF255812Baz
M8	16	13	100	BPF255816Baz
M8	20	17	100	BPF255820Baz
M8	25	22	100	BPF255825Baz
M8	30	27	100	BPF255830Baz
M8	35	32	100	BPF255835Baz
M8	40	37	100	BPF255840Baz
M8	45	42	100	BPF255845Baz
M8	50	47	100	BPF255850Baz
M8	60	57	100	BPF255860Baz
M8	70	67	100	BPF255870Baz
M8	80	77	100	BPF255880Baz

344

> When using a male insert we recommend a lock nut if fully tightening down to the end of the screw.

(See picture page 342).



## Other material insert : example of part N° for male insert M6 x 10 :

Stainless steel = i	Brass = ms	Aluminium = al
BPF255610Bi	BPF255610Bms	BPF255610Bal

## Female insert

d	Unit of sale	Part N° (Zinc-plated steel)
M6	100	BPF2556Baz
M8	100	BPF2558Baz

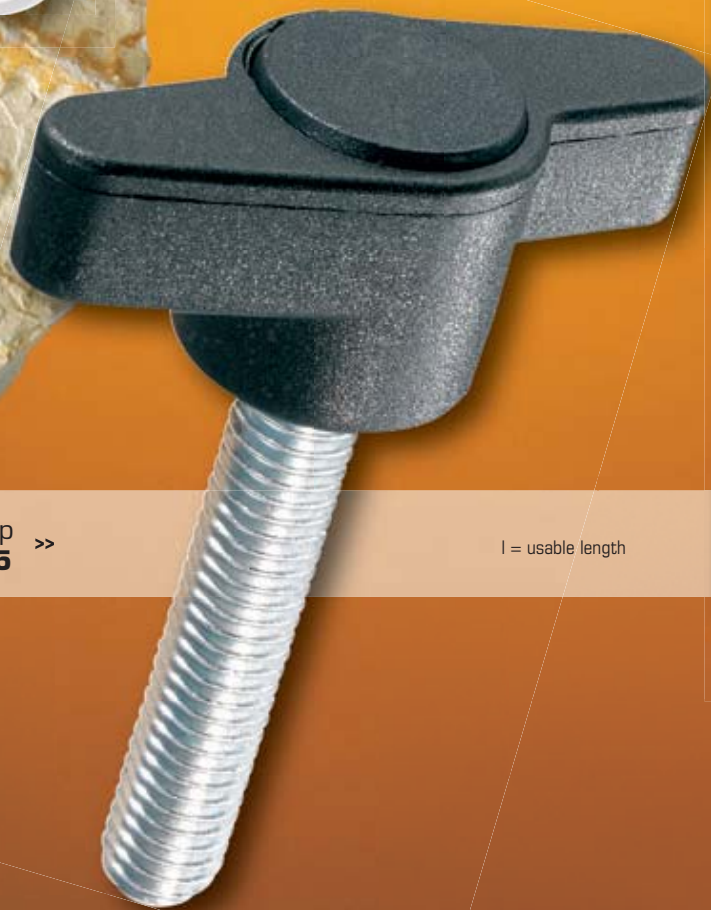
## MATERIALS - COLOURS

### STANDARD :

- Head : black Nylon.
- Insert : zinc-plated steel.
- Tolerance "I" : +/- 1 mm.

### ON REQUEST :

- Male insert : Aluminium / Titanium / Nylon / Stainless steel / Brass.
- Female insert : Aluminium / Titanium / Nylon / Stainless steel / Brass / Zinc-plated steel self-locking nut.
- Head colours : see RAL colour chart page 510 / 511. Minimum quantity on request.



Wing grip >>  
**BPF 255**

l = usable length

345

Titanium = t	Nylon = ny
BPF255610Bt	BPF255610Bny



Aluminium



Titanium



Nylon



Stainless steel



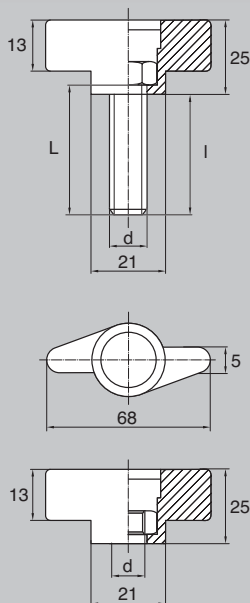
Brass



Nut



# HANDWHEELS & KNOBS > BPF 258



## Male insert

d	L	I	Unit of sale	Part N° (Zinc-plated steel)
M5	10	5	100	BPF258510Baz
M5	12	7	100	BPF258512Baz
M5	16	11	100	BPF258516Baz
M5	20	15	100	BPF258520Baz
M5	25	20	100	BPF258525Baz
M5	30	25	100	BPF258530Baz
M5	35	30	100	BPF258535Baz
M5	40	35	100	BPF258540Baz
M5	45	40	100	BPF258545Baz
M5	50	45	100	BPF258550Baz
M5	60	55	100	BPF258560Baz
M5	70	65	100	BPF258570Baz
M6	10	5	100	BPF258610Baz
M6	12	7	100	BPF258612Baz
M6	16	11	100	BPF258616Baz
M6	20	15	100	BPF258620Baz
M6	25	20	100	BPF258625Baz
M6	30	25	100	BPF258630Baz
M6	35	30	100	BPF258635Baz
M6	40	35	100	BPF258640Baz
M6	45	40	100	BPF258645Baz
M6	50	45	100	BPF258650Baz
M6	60	55	100	BPF258660Baz
M6	70	65	100	BPF258670Baz
M6	80	75	100	BPF258680Baz

346

> When using a male insert we recommend a lock nut if fully tightening down to the end of the screw.

(See picture page 342).



## Other material insert : example of part N° for male insert M5 x 10 :

Stainless steel = i	Brass = ms	Aluminium = al
BPF258510Bi	BPF258510Bms	BPF258510Bal

## Female insert

d	Unit of sale	Part N° (Zinc-plated steel)
M5	100	BPF2585Baz
M6	100	BPF2586Baz

## MATERIALS - COLOURS

### STANDARD :

- Head : black Nylon.
- Insert : zinc-plated steel.
- Tolerance "I" : +/- 1 mm.

### ON REQUEST :

- Male insert : Aluminium / Titanium / Nylon / Stainless steel / Brass.
- Female insert : Aluminium / Titanium / Nylon / Stainless steel / Brass / Zinc-plated steel self-locking nut.
- Head colours : see RAL colour chart page 510 / 511. Minimum quantity on request.



Wing grip  
**BPF 258** >>

l = usable length



347

**Titanium = t**

**Nylon = ny**

BPF258510Bt

BPF258510Bny



Aluminium



Titanium



Nylon



Stainless steel



Brass

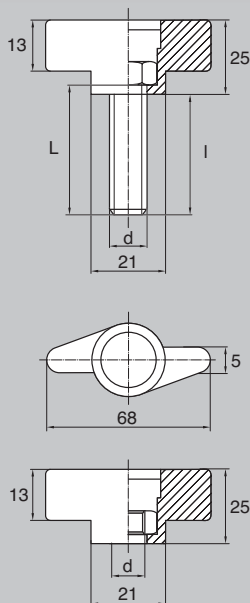


Nut

> Other dimensions : see next page.



# HANDWHEELS & KNOBS > BPF 258



## Male insert

d	L	I	Unit of sale	Part N° (Zinc-plated steel)
M8	10	5	100	BPF258810Baz
M8	12	7	100	BPF258812Baz
M8	16	11	100	BPF258816Baz
M8	20	15	100	BPF258820Baz
M8	25	20	100	BPF258825Baz
M8	30	25	100	BPF258830Baz
M8	35	30	100	BPF258835Baz
M8	40	35	100	BPF258840Baz
M8	45	40	100	BPF258845Baz
M8	50	45	100	BPF258850Baz
M8	60	55	100	BPF258860Baz
M8	70	65	100	BPF258870Baz
M10	16	11	100	BPF2581016Baz
M10	20	15	100	BPF2581020Baz
M10	25	20	100	BPF2581025Baz
M10	30	25	100	BPF2581030Baz
M10	35	30	100	BPF2581035Baz
M10	40	35	100	BPF2581040Baz
M10	45	40	100	BPF2581045Baz
M10	50	45	100	BPF2581050Baz
M10	60	55	100	BPF2581060Baz
M10	70	65	100	BPF2581070Baz
M10	80	75	100	BPF2581080Baz

348

> When using a male insert we recommend a lock nut if fully tightening down to the end of the screw.

(See picture page 342).



## Other material insert : example of part N° for male insert M8 x 10 :

Stainless steel = i	Brass = ms	Aluminium = al
BPF258810Bi	BPF258810Bms	BPF258810Bal

## Female insert

d	Unit of sale	Part N° (Zinc-plated steel)
M8	100	BPF2588Baz
M10	100	BPF25810Baz

## MATERIALS - COLOURS

### STANDARD :

- Head : black Nylon.
- Insert : zinc-plated steel.
- Tolerance "I" : +/- 1 mm.

### ON REQUEST :

- Male insert : Aluminium / Titanium / Nylon / Stainless steel / Brass.
- Female insert : Aluminium / Titanium / Nylon / Stainless steel / Brass / Zinc-plated steel self-locking nut.
- Head colours : see RAL colour chart page 510 / 511. Minimum quantity on request.



Wing grip  
**BPF 258** >>

l = usable length



**Titanium = t**

**Nylon = ny**

BPF258810Bt

BPF258810Bny



Aluminium



Titanium



Nylon



Stainless steel



Brass

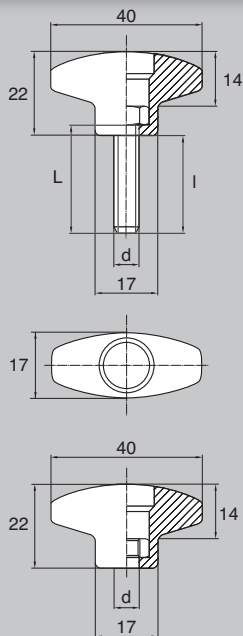


Nut





# HANDWHEELS & KNOBS > BPF 260



## Male insert

d	L	I	Unit of sale	Part N° (Zinc-plated steel)
M4	12	9	100	BPF260412Baz
M4	16	13	100	BPF260416Baz
M4	20	17	100	BPF260420Baz
M4	25	22	100	BPF260425Baz
M4	30	27	100	BPF260430Baz
M4	35	32	100	BPF260435Baz
M4	40	37	100	BPF260440Baz
M4	45	42	100	BPF260445Baz
M5	12	9	100	BPF260512Baz
M5	16	13	100	BPF260516Baz
M5	20	17	100	BPF260520Baz
M5	25	22	100	BPF260525Baz
M5	30	27	100	BPF260530Baz
M5	35	32	100	BPF260535Baz
M5	40	37	100	BPF260540Baz
M5	45	42	100	BPF260545Baz
M6	12	8,5	100	BPF260612Baz
M6	16	12,5	100	BPF260616Baz
M6	20	16,5	100	BPF260620Baz
M6	25	21,5	100	BPF260625Baz
M6	30	26,5	100	BPF260630Baz
M6	35	31,5	100	BPF260635Baz
M6	40	36,5	100	BPF260640Baz
M6	45	41,5	100	BPF260645Baz

350

> When using a male insert we recommend a lock nut if fully tightening down to the end of the screw.

(See picture page 342).

> Other lengths on request.



## Other material insert : example of part N° for male insert M4 x 12 :

Stainless steel = i	Brass = ms	Aluminium = al
BPF260412Bi	BPF260412Bms	BPF260412Bal

## Female insert

d	Unit of sale	Part N° (Zinc-plated steel)
M4	100	BPF2604Baz
M5	100	BPF2605Baz
M6	100	BPF2606Baz

## MATERIALS - COLOURS

### STANDARD :

- Head : black Nylon.
- Insert : zinc-plated steel.
- Tolerance "I" : +/- 1 mm.

### ON REQUEST :

- Male insert : Aluminium / Titanium / Nylon / Stainless steel / Brass.
- Female insert : Aluminium / Titanium / Nylon / Stainless steel / Brass / Zinc-plated steel self-locking nut.
- Head colours : see RAL colour chart page 510 / 511. Minimum quantity on request.

T-handle  
**BPF 260** >>

l = usable length

**Titanium = t**

**Nylon = ny**

BPF260412Bt

BPF260412Bny



Aluminium



Titanium



Nylon



Stainless steel



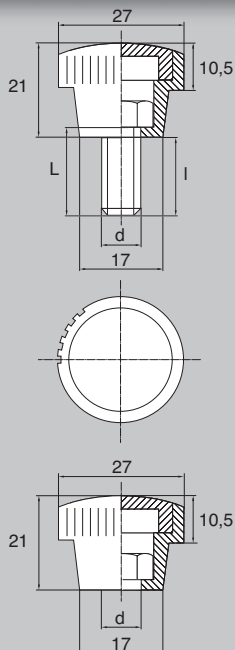
Brass



Nut



# HANDWHEELS & KNOBS > BPF 270



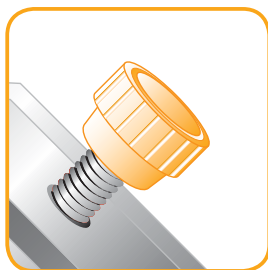
## Male insert

d	L	I	Unit of sale	Part N° (Zinc-plated steel)
M5	10	8	100	BPF270510Baz
M5	12	10	100	BPF270512Baz
M5	16	14	100	BPF270516Baz
M5	20	18	100	BPF270520Baz
M5	25	23	100	BPF270525Baz
M5	30	28	100	BPF270530Baz
M5	35	33	100	BPF270535Baz
M5	40	38	100	BPF270540Baz
M5	45	43	100	BPF270545Baz
M5	50	48	100	BPF270550Baz
M5	60	58	100	BPF270560Baz
M6	10	7,5	100	BPF270610Baz
M6	12	9,5	100	BPF270612Baz
M6	16	13,5	100	BPF270616Baz
M6	20	17,5	100	BPF270620Baz
M6	25	22,5	100	BPF270625Baz
M6	30	27,5	100	BPF270630Baz
M6	35	32,5	100	BPF270635Baz
M6	40	37,5	100	BPF270640Baz
M6	45	42,5	100	BPF270645Baz
M6	50	47,5	100	BPF270650Baz
M6	60	57,5	100	BPF270660Baz
M6	70	67,5	100	BPF270670Baz

352

> When using a male insert we recommend a lock nut if fully tightening down to the end of the screw.

(See picture page 342).



## Other material insert : example of part N° for male insert M5 x 10 :

Stainless steel = i	Brass = ms	Aluminium = al
BPF270510Bi	BPF270510Bms	BPF270510Bal

## Female insert

d	Unit of sale	Part N° (Zinc-plated steel)
M5	100	BPF2705Baz
M6	100	BPF2706Baz

> Continued next page.

## MATERIALS - COLOURS

### STANDARD :

- Head : black Nylon.
- Insert : zinc-plated steel.
- Tolerance "I" : +/- 1 mm.

### ON REQUEST :

- Male insert : Aluminium / Titanium / Nylon / Stainless steel / Brass.
- Female insert : Aluminium / Titanium / Nylon / Stainless steel / Brass / Zinc-plated steel self-locking nut.
- Head colours : see RAL colour chart page 510 / 511. Minimum quantity on request.

Knurled knob  
**BPF 270**



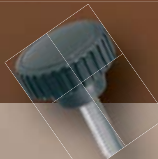
l = usable length

**Titanium = t**

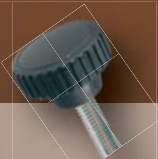
**Nylon = ny**

BPF270510Bt

BPF270510Bny



Aluminium



Titanium



Nylon



Stainless steel



Brass

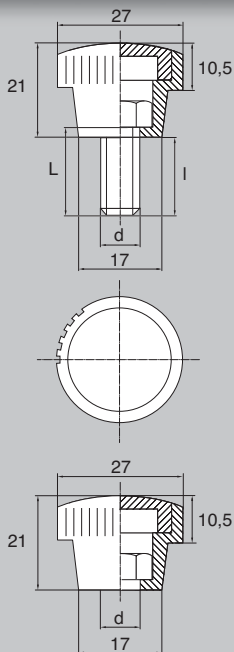


Nut

> Other dimensions : see next page.



# HANDWHEELS & KNOBS > BPF 270



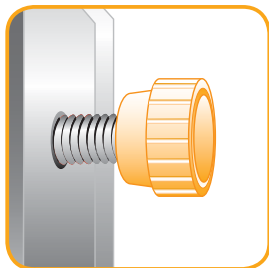
## Male insert

d	L	I	Unit of sale	Part N° (Zinc-plated steel)
M8	10	7,5	100	BPF270810Baz
M8	12	9,5	100	BPF270812Baz
M8	16	13,5	100	BPF270816Baz
M8	20	17,5	100	BPF270820Baz
M8	25	22,5	100	BPF270825Baz
M8	30	27,5	100	BPF270830Baz
M8	35	32,5	100	BPF270835Baz
M8	40	37,5	100	BPF270840Baz
M8	45	42,5	100	BPF270845Baz
M8	50	47,5	100	BPF270850Baz
M8	60	57,5	100	BPF270860Baz
M8	70	67,5	100	BPF270870Baz
M8	80	77,5	100	BPF270880Baz



354

> When using a male insert we recommend a lock nut if fully tightening down to the end of the screw.



Other material insert : example of part N° for male insert M8 x 10 :

Stainless steel = i	Brass = ms	Aluminium = al
BPF270810Bi	BPF270810Bms	BPF270810Bal

## Female insert

d	Unit of sale	Part N° (Zinc-plated steel)
M8	100	BPF2708Baz

## MATERIALS - COLOURS

### STANDARD :

- Head : black Nylon.
- Insert : zinc-plated steel.
- Tolerance "I" : +/- 1 mm.

### ON REQUEST :

- Male insert : Aluminium / Titanium / Nylon / Stainless steel / Brass.
- Female insert : Aluminium / Titanium / Nylon / Stainless steel / Brass / Zinc-plated steel self-locking nut.
- Head colours : see RAL colour chart page 510 / 511. Minimum quantity on request.

Knurled knob  
**BPF 270**



l = usable length



355

**Titanium = t**

**Nylon = ny**

BPF270810Bt

BPF270810Bny



Aluminium



Titanium



Nylon



Stainless steel



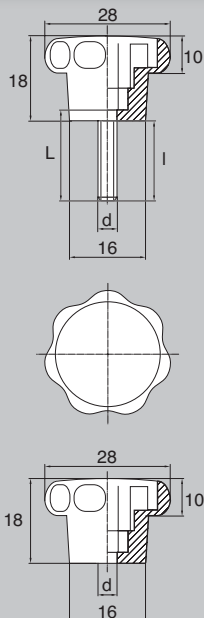
Brass



Nut



# HANDWHEELS & KNOBS > BPF 280



## Male insert

d	L	I	Unit of sale	Part N° (Zinc-plated steel)
M4	20	17,5	100	BPF280420Baz
M4	25	22,5	100	BPF280425Baz
M4	30	27,5	100	BPF280430Baz
M4	35	32,5	100	BPF280435Baz
M4	40	37,5	100	BPF280440Baz
M4	45	42,5	100	BPF280445Baz
M5	20	17,5	100	BPF280520Baz
M5	25	22,5	100	BPF280525Baz
M5	30	27,5	100	BPF280530Baz
M5	35	32,5	100	BPF280535Baz
M5	40	37,5	100	BPF280540Baz
M5	45	42,5	100	BPF280545Baz
M5	50	47,5	100	BPF280550Baz
M5	60	57,5	100	BPF280560Baz
M6	16	13,5	100	BPF280616Baz
M6	20	17,5	100	BPF280620Baz
M6	25	22,5	100	BPF280625Baz
M6	30	27,5	100	BPF280630Baz
M6	35	32,5	100	BPF280635Baz
M6	40	37,5	100	BPF280640Baz
M6	45	42,5	100	BPF280645Baz
M6	50	47,5	100	BPF280650Baz
M6	60	57,5	100	BPF280660Baz

356

> When using a male insert we recommend a lock nut if fully tightening down to the end of the screw.  
(See picture page 342).

> Other lengths on request.



## Other material insert : example of part N° for male insert M4 x 20 :

Stainless steel = i	Brass = ms	Aluminium = al
BPF280420Bi	BPF280420Bms	BPF280420Bal

## Female insert

d	Unit of sale	Part N° (Zinc-plated steel)
M4	100	BPF2804Baz
M5	100	BPF2805Baz
M6	100	BPF2806Baz

## MATERIALS - COLOURS

### STANDARD :

- Head : black Nylon.
- Insert : zinc-plated steel.
- Tolerance "I" : +/- 1 mm.

### ON REQUEST :

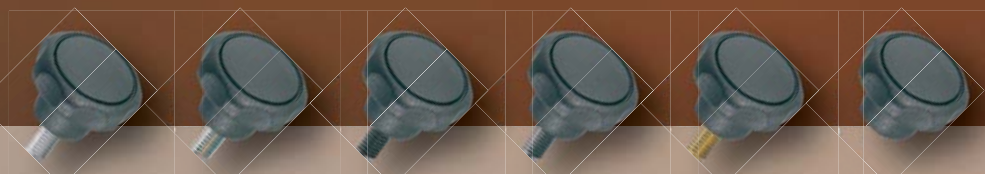
- Male insert : Aluminium / Titanium / Nylon / Stainless steel / Brass.
- Female insert : Aluminium / Titanium / Nylon / Stainless steel / Brass / Zinc-plated steel self-locking nut.
- Head colours : see RAL colour chart page 510 / 511.  
Minimum quantity on request.



Star grip  
**BPF 280** >>

l = usable length

Titanium = t	Nylon = ny
BPF280420Bt	BPF280420Bny



Aluminium

Titanium

Nylon

Stainless steel

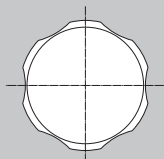
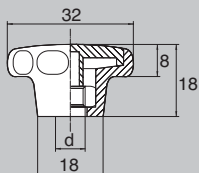
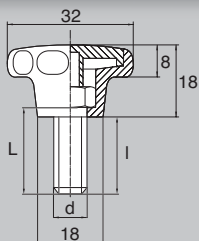
Brass

Nut





# HANDWHEELS & KNOBS > BPF 320



## Male insert

d	L	I	Unit of sale	Part N° (Zinc-plated steel)
M4	10	7,5	100	BPF320410Baz
M4	12	9,5	100	BPF320412Baz
M4	16	13,5	100	BPF320416Baz
M4	20	17,5	100	BPF320420Baz
M4	25	22,5	100	BPF320425Baz
M4	30	27,5	100	BPF320430Baz
M4	35	32,5	100	BPF320435Baz
M4	40	37,5	100	BPF320440Baz
M4	50	47,5	100	BPF320450Baz
M5	8	6	100	BPF32058Baz
M5	10	8	100	BPF320510Baz
M5	12	10	100	BPF320512Baz
M5	16	14	100	BPF320516Baz
M5	20	18	100	BPF320520Baz
M5	25	23	100	BPF320525Baz
M5	30	28	100	BPF320530Baz
M5	35	33	100	BPF320535Baz
M5	40	38	100	BPF320540Baz
M5	45	43	100	BPF320545Baz
M5	50	48	100	BPF320550Baz
M5	60	58	100	BPF320560Baz

358

> When using a male insert we recommend a lock nut if fully tightening down to the end of the screw.

> Open cover on request.

> Other dimensions : see page 360.



**Other material insert : example of part N° for male insert M4 x 10 :**

Stainless steel = i	Brass = ms	Aluminium = al
BPF320410Bi	BPF320410Bms	BPF320410Bal

## MATERIALS - COLOURS

### STANDARD :

- Head : black Nylon.
- Insert : zinc-plated steel.
- Tolerance "I" : +/- 1 mm.

### ON REQUEST :

- Male insert : Aluminium / Titanium / Nylon / Stainless steel / Brass.
- Female insert : Aluminium / Titanium / Nylon / Stainless steel / Brass / Zinc-plated steel self-locking nut.
- Head colours : see RAL colour chart page 510 / 511. Minimum quantity on request.

Star grip  
**BPF 320** >>

l = usable length



Titanium = t	Nylon = ny
BPF320410Bt	BPF320410Bny



Aluminium



Titanium



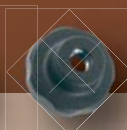
Nylon



Stainless steel



Brass

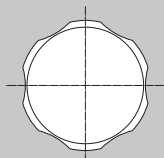
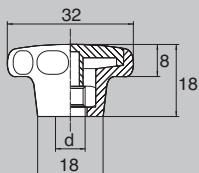
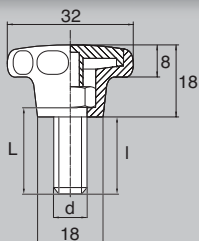


Nut

> Other dimensions : see next page.



# HANDWHEELS & KNOBS > BPF 320



## Male insert

d	L	I	Unit of sale	Part N° (Zinc-plated steel)
M6	10	7	100	BPF320610Baz
M6	12	9	100	BPF320612Baz
M6	16	13	100	BPF320616Baz
M6	20	17	100	BPF320620Baz
M6	25	22	100	BPF320625Baz
M6	30	27	100	BPF320630Baz
M6	35	32	100	BPF320635Baz
M6	40	37	100	BPF320640Baz
M6	45	42	100	BPF320645Baz
M6	50	47	100	BPF320650Baz
M6	60	57	100	BPF320660Baz
M6	70	67	100	BPF320670Baz
M8	10	8	100	BPF320810Baz
M8	12	10	100	BPF320812Baz
M8	16	14	100	BPF320816Baz
M8	20	18	100	BPF320820Baz
M8	25	23	100	BPF320825Baz
M8	30	28	100	BPF320830Baz
M8	35	33	100	BPF320835Baz
M8	40	38	100	BPF320840Baz
M8	45	43	100	BPF320845Baz
M8	50	48	100	BPF320850Baz
M8	60	58	100	BPF320860Baz

## Other material insert : example of part N° for male insert M6 x 10 :

Stainless steel = i	Brass = ms	Aluminium = al
BPF320610Bi	BPF320610Bms	BPF320610Bal

## Female insert

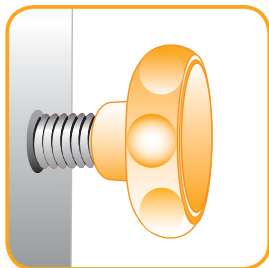
d	Unit of sale	Part N° (Zinc-plated steel)
M4	100	BPF3204Baz
M5	100	BPF3205Baz
M6	100	BPF3206Baz
M8	100	BPF3208Baz

360

> When using a male insert we recommend a lock nut if fully tightening down to the end of the screw.  
(See picture page 342).

> Open cover on request.

> Other lengths on request.



## MATERIALS - COLOURS

### STANDARD :

- Head : black Nylon.
- Insert : zinc-plated steel.
- Tolerance "I" : +/- 1 mm.

### ON REQUEST :

- Male insert : Aluminium / Titanium / Nylon / Stainless steel / Brass.
- Female insert : Aluminium / Titanium / Nylon / Stainless steel / Brass / Zinc-plated steel self-locking nut.
- Head colours : see RAL colour chart page 510 / 511.  
Minimum quantity on request.

Star grip  
**BPF 320** >>

l = usable length



361

**Titanium = t**

**Nylon = ny**

BPF320610Bt

BPF320610Bny



Aluminium



Titanium



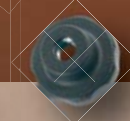
Nylon



Stainless steel



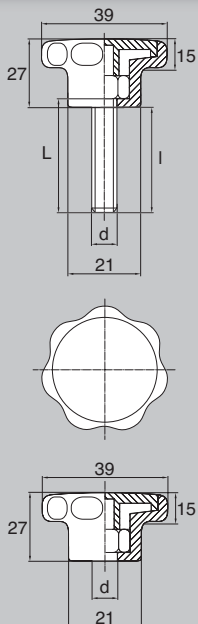
Brass



Nut



# HANDWHEELS & KNOBS > BPF 390



## Male insert

d	L	I	Unit of sale	Part N° (Zinc-plated steel)
M6	10	7	100	BPF390610Baz
M6	12	9	100	BPF390612Baz
M6	16	13	100	BPF390616Baz
M6	20	17	100	BPF390620Baz
M6	25	22	100	BPF390625Baz
M6	30	27	100	BPF390630Baz
M6	35	32	100	BPF390635Baz
M6	40	37	100	BPF390640Baz
M6	50	47	100	BPF390650Baz
M6	60	57	100	BPF390660Baz
M6	70	67	100	BPF390670Baz
M8	10	7	100	BPF390810Baz
M8	12	9	100	BPF390812Baz
M8	16	13	100	BPF390816Baz
M8	20	17	100	BPF390820Baz
M8	25	22	100	BPF390825Baz
M8	30	27	100	BPF390830Baz
M8	35	32	100	BPF390835Baz
M8	40	37	100	BPF390840Baz
M8	50	47	100	BPF390850Baz
M8	60	57	100	BPF390860Baz
M8	70	67	100	BPF390870Baz
M8	80	77	100	BPF390880Baz

362

> When using a male insert we recommend a lock nut if fully tightening down to the end of the screw.  
(See picture page 342).

> Also available in M5 (dimensions on request).



## Other material insert : example of part N° for male insert M6 x 10 :

Stainless steel = i	Brass = ms	Aluminium = al
BPF390610Bi	BPF390610Bms	BPF390610Bal

## Female insert

d	Unit of sale	Part N° (Zinc-plated steel)
M5	100	BPF3905Baz
M6	100	BPF3906Baz
M8	100	BPF3908Baz

## MATERIALS - COLOURS

### STANDARD :

- Head : black Nylon.
- Insert : zinc-plated steel.
- Tolerance "I" : +/- 1 mm.

### ON REQUEST :

- Male insert : Aluminium / Titanium / Nylon / Stainless steel / Brass.
- Female insert : Aluminium / Titanium / Nylon / Stainless steel / Brass / Zinc-plated steel self-locking nut.
- Head colours : see RAL colour chart page 510 / 511.  
Minimum quantity on request.

Star grip  
**BPF 390**



l = usable length

**Titanium = t**

**BPF390610Bt**

**Nylon = ny**

**BPF390610Bny**



Aluminium



Titanium



Nylon



Stainless steel

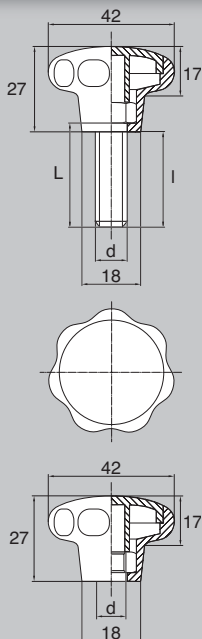


Brass



Nut





## Male insert

d	L	I	Unit of sale	Part N° (Zinc-plated steel)
M5	10	8	100	BPF420510Baz
M5	12	10	100	BPF420512Baz
M5	16	14	100	BPF420516Baz
M5	20	18	100	BPF420520Baz
M5	25	23	100	BPF420525Baz
M5	30	28	100	BPF420530Baz
M5	35	33	100	BPF420535Baz
M5	40	38	100	BPF420540Baz
M5	45	43	100	BPF420545Baz
M5	50	48	100	BPF420550Baz
M6	10	7,5	100	BPF420610Baz
M6	12	9,5	100	BPF420612Baz
M6	16	13,5	100	BPF420616Baz
M6	20	17,5	100	BPF420620Baz
M6	25	22,5	100	BPF420625Baz
M6	30	27,5	100	BPF420630Baz
M6	35	32,5	100	BPF420635Baz
M6	40	37,5	100	BPF420640Baz
M6	45	42,5	100	BPF420645Baz
M6	50	47,5	100	BPF420650Baz
M6	60	57,5	100	BPF420660Baz

## Other material insert : example of part N° for male insert M5 x 10 :

Stainless steel = i	Brass = ms	Aluminium = al
BPF420510Bi	BPF420510Bms	BPF420510Bal

## Female insert

d	Unit of sale	Part N° (Zinc-plated steel)
M5	100	BPF4205Baz
M6	100	BPF4206Baz

> Continued next page.



## MATERIALS - COLOURS

### STANDARD :

- Head : black Nylon.
- Insert : zinc-plated steel.
- Tolerance "I" : +/- 1 mm.

### ON REQUEST :

- Male insert : Aluminium / Titanium / Nylon / Stainless steel / Brass.
- Female insert : Aluminium / Titanium / Nylon / Stainless steel / Brass / Zinc-plated steel self-locking nut.
- Head colours : see RAL colour chart page 510 / 511. Minimum quantity on request.



Star grip  
**BPF 420**



l = usable length

365



**Titanium = t**

BPF420510Bt

**Nylon = ny**

BPF420510Bny



Aluminium



Titanium



Nylon



Stainless steel



Brass



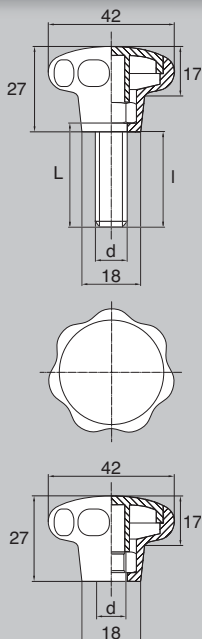
Nut

> Other dimensions : see next page.





# HANDWHEELS & KNOBS > BPF 420



## Male insert

d	L	I	Unit of sale	Part N° (Zinc-plated steel)
M8	10	8	100	BPF420810Baz
M8	12	10	100	BPF420812Baz
M8	16	14	100	BPF420816Baz
M8	20	18	100	BPF420820Baz
M8	25	23	100	BPF420825Baz
M8	30	28	100	BPF420830Baz
M8	35	33	100	BPF420835Baz
M8	40	38	100	BPF420840Baz
M8	45	43	100	BPF420845Baz
M8	50	48	100	BPF420850Baz
M8	60	58	100	BPF420860Baz
M8	70	68	100	BPF420870Baz
M10	16	13,5	100	BPF4201016Baz
M10	20	17,5	100	BPF4201020Baz
M10	25	22,5	100	BPF4201025Baz
M10	30	27,5	100	BPF4201030Baz
M10	35	32,5	100	BPF4201035Baz
M10	40	37,5	100	BPF4201040Baz
M10	45	42,5	100	BPF4201045Baz
M10	50	47,5	100	BPF4201050Baz
M10	60	57,5	100	BPF4201060Baz
M10	70	67,5	100	BPF4201070Baz

Dimensions for M10 : 42 = 42,5 mm / 27 = 28 mm / Ø 18 = Ø 21 mm.

366

> When using a male insert we recommend a lock nut if fully tightening down to the end of the screw.

(See picture page 342).

> Other lengths on request.



## Other material insert : example of part N° for male insert M8 x 10 :

Stainless steel = i	Brass = ms	Aluminium = al
BPF420810Bi	BPF420810Bms	BPF420810Bal

## Female insert

d	Unit of sale	Part N° (Zinc-plated steel)
M8	100	BPF4208Baz
M10	100	BPF42010Baz

## MATERIALS - COLOURS

### STANDARD :

- Head : black Nylon.
- Insert : zinc-plated steel.
- Tolerance "I" : +/- 1 mm.

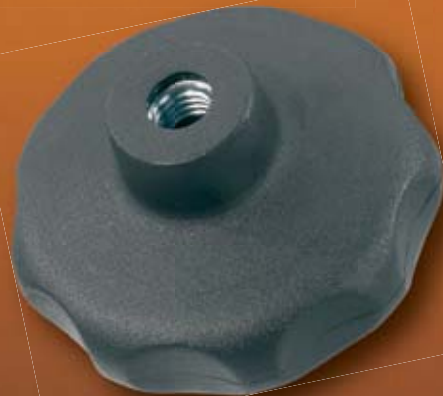
### ON REQUEST :

- Male insert : Aluminium / Titanium / Nylon / Stainless steel / Brass.
- Female insert : Aluminium / Titanium / Nylon / Stainless steel / Brass / Zinc-plated steel self-locking nut.
- Head colours : see RAL colour chart page 510 / 511. Minimum quantity on request.

Star grip  
**BPF 420**

>

l = usable length



367

**Titanium = t**

BPF420810Bt

**Nylon = ny**

BPF420810Bny



Aluminium



Titanium



Nylon



Stainless steel



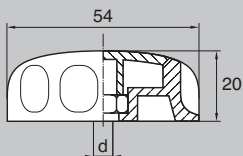
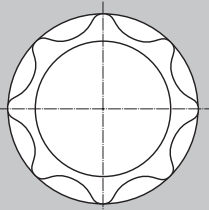
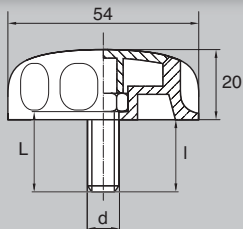
Brass



Nut



# HANDWHEELS & KNOBS > BPF 540



## Male insert

d	L	I	Unit of sale	Part N° (Zinc-plated steel)
M8	10	7	100	BPF540810Baz
M8	12	9	100	BPF540812Baz
M8	16	13	100	BPF540816Baz
M8	20	17	100	BPF540820Baz
M8	25	22	100	BPF540825Baz
M8	30	27	100	BPF540830Baz
M8	35	32	100	BPF540835Baz
M8	40	37	100	BPF540840Baz
M8	45	42	100	BPF540845Baz
M8	50	47	100	BPF540850Baz
M8	60	57	100	BPF540860Baz
M8	70	67	100	BPF540870Baz
M8	80	77	100	BPF540880Baz



368

> When using a male insert we recommend a lock nut if fully tightening down to the end of the screw.

> Open cover on request.



## Other material insert : example of part N° for male insert M8 x 10 :

Stainless steel = i	Brass = ms	Aluminium = al
BPF540810Bi	BPF540810Bms	BPF540810Bal

## Female insert

d	Unit of sale	Part N° (Zinc-plated steel)
M8	100	BPF5408Baz

## MATERIALS - COLOURS

### STANDARD :

- Head : black Nylon.
- Insert : zinc-plated steel.
- Tolerance "I" : +/- 1 mm.

### ON REQUEST :

- Male insert : Aluminium / Titanium / Nylon / Stainless steel / Brass.
- Female insert : Aluminium / Titanium / Nylon / Stainless steel / Brass / Zinc-plated steel self-locking nut.
- Head colours : see RAL colour chart page 510 / 511. Minimum quantity on request.



Star grip  
**BPF 540**



l = usable length

369

Titanium = t	Nylon = ny
BPF540810Bt	BPF540810Bny



Aluminium



Titanium



Nylon



Stainless steel



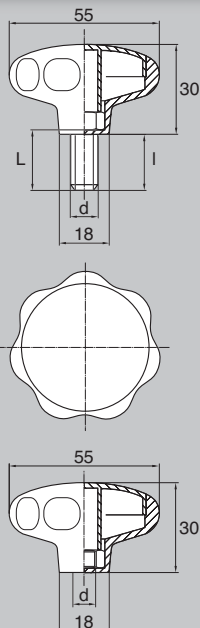
Brass



Nut



# HANDWHEELS & KNOBS > BPF 550



## Male insert

d	L	I	Unit of sale	Part N° (Zinc-plated steel)
M8	10	7,5	100	BPF550810Baz
M8	12	9,5	100	BPF550812Baz
M8	16	13,5	100	BPF550816Baz
M8	20	17,5	100	BPF550820Baz
M8	25	22,5	100	BPF550825Baz
M8	30	27,5	100	BPF550830Baz
M8	35	32,5	100	BPF550835Baz
M8	40	37,5	100	BPF550840Baz
M8	45	42,5	100	BPF550845Baz
M8	50	47,5	100	BPF550850Baz
M8	60	47,5	100	BPF550860Baz
M8	70	67,5	100	BPF550870Baz
M8	80	77,5	100	BPF550880Baz



370

> When using a male insert we recommend a lock nut if fully tightening down to the end of the screw.



## Other material insert : example of part N° for male insert M8 x 10 :

Stainless steel = i	Brass = ms	Aluminium = al
BPF550810Bi	BPF550810Bms	BPF550810Bal

## Female insert

d	Unit of sale	Part N° (Zinc-plated steel)
M8	100	BPF5508Baz

## MATERIALS - COLOURS

### STANDARD :

- Head : black Nylon.
- Insert : zinc-plated steel.
- Tolerance "I" : +/- 1 mm.

### ON REQUEST :

- Male insert : Aluminium / Titanium / Nylon / Stainless steel / Brass.
- Female insert : Aluminium / Titanium / Nylon / Stainless steel / Brass / Zinc-plated steel self-locking nut.
- Head colours : see RAL colour chart page 510 / 511. Minimum quantity on request.

Star grip  
**BPF 550** >>

l = usable length

371

**Titanium = t**

BPF550810Bt

**Nylon = ny**

BPF550810Bny



Aluminium



Titanium



Nylon



Stainless steel



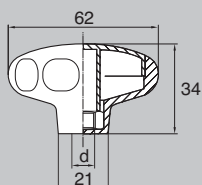
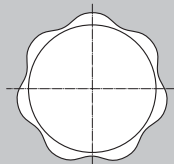
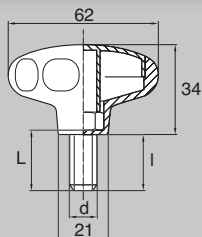
Brass



Nut



# HANDWHEELS & KNOBS > BPF 620



## Male insert

d	L	I	Unit of sale	Part N° (Zinc-plated steel)
M8	10	7,5	100	BPF620810Baz
M8	12	9,5	100	BPF620812Baz
M8	16	13,5	100	BPF620816Baz
M8	20	17,5	100	BPF620820Baz
M8	25	22,5	100	BPF620825Baz
M8	30	27,5	100	BPF620830Baz
M8	35	32,5	100	BPF620835Baz
M8	40	37,5	100	BPF620840Baz
M8	45	42,5	100	BPF620845Baz
M8	50	47,5	100	BPF620850Baz
M8	60	57,5	100	BPF620860Baz
M8	70	67,5	100	BPF620870Baz
M8	80	77,5	100	BPF620880Baz
M10	16	13	100	BPF6201016Baz
M10	20	17	100	BPF6201020Baz
M10	25	22	100	BPF6201025Baz
M10	30	27	100	BPF6201030Baz
M10	35	32	100	BPF6201035Baz
M10	40	37	100	BPF6201040Baz
M10	45	42	100	BPF6201045Baz
M10	50	47	100	BPF6201050Baz
M10	60	57	100	BPF6201060Baz
M10	70	67	100	BPF6201070Baz
M10	80	77	100	BPF6201080Baz

## Other material insert : example of part N° for male insert M8 x 10 :

Stainless steel = i	Brass = ms	Aluminium = al
BPF620810Bi	BPF620810Bms	BPF620810Bal

## Female insert

d	Unit of sale	Part N° (Zinc-plated steel)
M8	100	BPF6208Baz
M10	100	BPF62010Baz

372

> When using a male insert we recommend a lock nut if fully tightening down to the end of the screw.

(See picture page 342).

> Colour printing of your company logo on request.



## MATERIALS - COLOURS

### STANDARD :

- Head : black Nylon.
- Insert : zinc-plated steel.
- Tolerance "I" : +/- 1 mm.

### ON REQUEST :

- Male insert : Aluminium / Titanium / Nylon / Stainless steel / Brass.
- Female insert : Aluminium / Titanium / Nylon / Stainless steel / Brass / Zinc-plated steel self-locking nut.
- Head colours : see RAL colour chart page 510 / 511. Minimum quantity on request.

Star grip  
**BPF 620** >

l = usable length



**Titanium = t**

**Nylon = ny**

BPF620810Bt

BPF620810Bny



Aluminium



Titanium



Nylon



Stainless steel



Brass

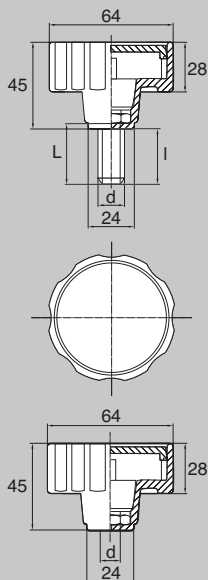


Nut





# HANDWHEELS & KNOBS > BPF 640



## Male insert

d	L	I	Unit of sale	Part N° (Zinc-plated steel)
M8	20	16	100	BPF640820Baz
M8	25	21	100	BPF640825Baz
M8	30	26	100	BPF640830Baz
M8	35	31	100	BPF640835Baz
M8	40	36	100	BPF640840Baz
M8	45	41	100	BPF640845Baz
M8	50	46	100	BPF640850Baz
M8	60	56	100	BPF640860Baz
M10	20	16	100	BPF6401020Baz
M10	25	21	100	BPF6401025Baz
M10	30	26	100	BPF6401030Baz
M10	35	31	100	BPF6401035Baz
M10	40	36	100	BPF6401040Baz
M10	45	41	100	BPF6401045Baz
M10	50	46	100	BPF6401050Baz
M10	60	56	100	BPF6401060Baz
M12	20	16	100	BPF6401220Baz
M12	25	21	100	BPF6401225Baz
M12	30	26	100	BPF6401230Baz
M12	35	31	100	BPF6401235Baz
M12	40	36	100	BPF6401240Baz
M12	45	41	100	BPF6401245Baz
M12	50	46	100	BPF6401250Baz
M12	60	56	100	BPF6401260Baz

> When using a male insert we recommend a lock nut if fully tightening down to the end of the screw.

(See picture page 342).

> Other lengths on request.



## Other material insert : example of part N° for male insert M8 x 20 :

Stainless steel = i	Brass = ms	Aluminium = al
BPF640820Bi	BPF640820Bms	BPF640820Bal

## Female insert

d	Unit of sale	Part N° (Zinc-plated steel)
M8	100	BPF6408Baz
M10	100	BPF64010Baz
M12	100	BPF64012Baz

## MATERIALS - COLOURS

### STANDARD :

- Head : black Nylon.
- Insert : zinc-plated steel.
- Tolerance "I" : +/- 1 mm.

### ON REQUEST :

- Male insert : Aluminium / Titanium / Nylon / Stainless steel / Brass.
- Female insert : Aluminium / Titanium / Nylon / Stainless steel / Brass / Zinc-plated steel self-locking nut.
- Head colours : see RAL colour chart page 510 / 511. Minimum quantity on request.



Knurled handwheel >>  
**BPF 640**

l = usable length

375

**Titanium = t**

BPF640820Bt

**Nylon = ny**

BPF640820Bny

Aluminium

Titanium

Nylon

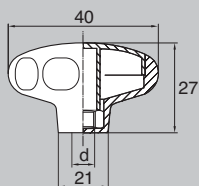
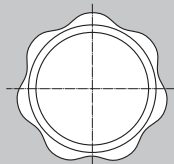
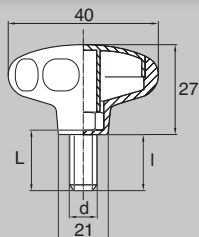
Stainless steel

Brass

Nut



# HANDWHEELS & KNOBS > BPF 400 L



## Male insert

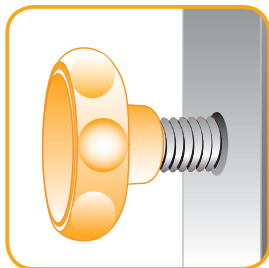
d	L	I	Unit of sale	Part N° (Zinc-plated steel)
M6	10	6	100	BPF400L610Baz
M6	12	8	100	BPF400L612Baz
M6	16	12	100	BPF400L616Baz
M6	20	16	100	BPF400L620Baz
M6	25	21	100	BPF400L625Baz
M6	30	26	100	BPF400L630Baz
M6	35	31	100	BPF400L635Baz
M6	40	36	100	BPF400L640Baz
M6	45	41	100	BPF400L645Baz
M6	50	46	100	BPF400L650Baz
M6	60	56	100	BPF400L660Baz
M6	70	66	100	BPF400L670Baz
M6	80	76	100	BPF400L680Baz
M8	10	7	100	BPF400L810Baz
M8	12	9	100	BPF400L812Baz
M8	16	13	100	BPF400L816Baz
M8	20	17	100	BPF400L820Baz
M8	25	22	100	BPF400L825Baz
M8	30	27	100	BPF400L830Baz
M8	35	32	100	BPF400L835Baz
M8	40	37	100	BPF400L840Baz
M8	45	42	100	BPF400L845Baz
M8	50	47	100	BPF400L850Baz
M8	60	57	100	BPF400L860Baz
M8	70	67	100	BPF400L870Baz
M8	80	77	100	BPF400L880Baz

376

> When using a male insert we recommend a lock nut if fully tightening down to the end of the screw.

(See picture page 342).

> Other lengths on request.



## Other material insert : example of part N° for male insert M6 x 10 :

Stainless steel = i	Brass = ms	Aluminium = al
BPF400L610Bi	BPF400L610Bms	BPF400L610Bal

## Female insert

d	Unit of sale	Part N° (Zinc-plated steel)
M6	100	BPF400L6Baz
M8	100	BPF400L8Baz

## MATERIALS - COLOURS

### STANDARD :

- Head : black Nylon.
- Insert : zinc-plated steel.
- Tolerance "I" : +/- 1 mm.

### ON REQUEST :

- Male insert : Aluminium / Titanium / Nylon / Stainless steel / Brass.
- Female insert : Aluminium / Titanium / Nylon / Stainless steel / Brass / Zinc-plated steel self-locking nut.
- Head colours : see RAL colour chart page 510 / 511. Minimum quantity on request.

Star handweel >>  
**BPF 400 L**

l = usable length

**Titanium = t**

**Nylon = ny**

BPF400L610Bt

BPF400L610Bny

Aluminium

Titanium

Nylon

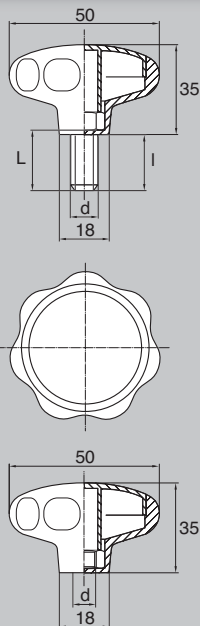
Stainless steel

Brass

Nut



# HANDWHEELS & KNOBS > BPF 500 L



## Male insert

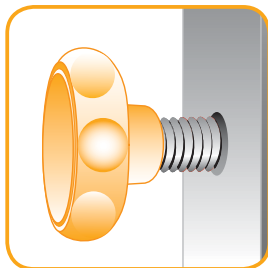
d	L	l	Unit of sale	Part N° (Zinc-plated steel)
M6	20	15	100	BPF500L620Baz
M6	25	20	100	BPF500L625Baz
M6	30	25	100	BPF500L630Baz
M6	35	30	100	BPF500L635Baz
M6	40	35	100	BPF500L640Baz
M6	45	40	100	BPF500L645Baz
M6	50	45	100	BPF500L650Baz
M6	60	55	100	BPF500L660Baz
M8	20	16	100	BPF500L820Baz
M8	25	21	100	BPF500L825Baz
M8	30	26	100	BPF500L830Baz
M8	35	31	100	BPF500L835Baz
M8	40	36	100	BPF500L840Baz
M8	45	41	100	BPF500L845Baz
M8	50	46	100	BPF500L850Baz
M8	60	56	100	BPF500L860Baz
M10	20	17	100	BPF500L1020Baz
M10	25	22	100	BPF500L1025Baz
M10	30	27	100	BPF500L1030Baz
M10	35	32	100	BPF500L1035Baz
M10	40	37	100	BPF500L1040Baz
M10	45	42	100	BPF500L1045Baz
M10	50	47	100	BPF500L1050Baz
M10	60	57	100	BPF500L1060Baz

378

> When using a male insert we recommend a lock nut if fully tightening down to the end of the screw.

(See picture page 342).

> Other lengths on request.



## Other material insert : example of part N° for male insert M6 x 20 :

Stainless steel = i	Brass = ms	Aluminium = al
BPF500L620Bi	BPF500L620Bms	BPF500L620Bal

## Female insert

d	Unit of sale	Part N° (Zinc-plated steel)
M6	100	BPF500L6Baz
M8	100	BPF500L8Baz
M10	100	BPF500L10Baz

## MATERIALS - COLOURS

### STANDARD :

- Head : black Nylon.
- Insert : zinc-plated steel.
- Tolerance "l" : +/- 1 mm.

### ON REQUEST :

- Male insert : Aluminium / Titanium / Nylon / Stainless steel / Brass.
- Female insert : Aluminium / Titanium / Nylon / Stainless steel / Brass / Zinc-plated steel self-locking nut.
- Head colours : see RAL colour chart page 510 / 511. Minimum quantity on request.

Star handweel >>  
**BPF 500 L**

l = usable length



379

**Titanium = t**

**Nylon = ny**

**BPF500L620Bt**

**BPF500L620Bny**



Aluminium



Titanium



Nylon



Stainless steel



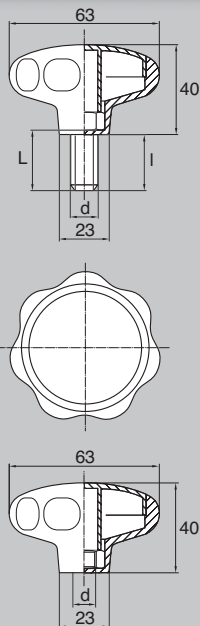
Brass



Nut



# HANDWHEELS & KNOBS > BPF 630 L



## Male insert

d	L	I	Unit of sale	Part N° (Zinc-plated steel)
M8	10	6	100	BPF630L810Baz
M8	12	8	100	BPF630L812Baz
M8	16	12	100	BPF630L816Baz
M8	20	16	100	BPF630L820Baz
M8	25	21	100	BPF630L825Baz
M8	30	26	100	BPF630L830Baz
M8	35	31	100	BPF630L835Baz
M8	40	36	100	BPF630L840Baz
M8	45	41	100	BPF630L845Baz
M8	50	46	100	BPF630L850Baz
M8	60	56	100	BPF630L860Baz
M8	70	66	100	BPF630L870Baz
M8	80	76	100	BPF630L880Baz
M10	16	13	100	BPF630L1016Baz
M10	20	17	100	BPF630L1020Baz
M10	25	27	100	BPF630L1025Baz
M10	30	22	100	BPF630L1030Baz
M10	35	32	100	BPF630L1035Baz
M10	40	37	100	BPF630L1040Baz
M10	45	42	100	BPF630L1045Baz
M10	50	47	100	BPF630L1050Baz
M10	60	57	100	BPF630L1060Baz
M10	70	67	100	BPF630L1070Baz
M10	80	77	100	BPF630L1080Baz

380

> When using a male insert we recommend a lock nut if fully tightening down to the end of the screw.

(See picture page 342).

> Other lengths on request.



## Other material insert : example of part N° for male insert M8 x 10 :

Stainless steel = i	Brass = ms	Aluminium = al
BPF630L810Bi	BPF630L810Bms	BPF630L810Bal

## Female insert

d	Unit of sale	Part N° (Zinc-plated steel)
M8	100	BPF630L8Baz
M10	100	BPF630L10Baz

## MATERIALS - COLOURS

### STANDARD :

- Head : black Nylon.
- Insert : zinc-plated steel.
- Tolerance "I" : +/- 1 mm.

### ON REQUEST :

- Male insert : Aluminium / Titanium / Nylon / Stainless steel / Brass.
- Female insert : Aluminium / Titanium / Nylon / Stainless steel / Brass / Zinc-plated steel self-locking nut.
- Head colours : see RAL colour chart page 510 / 511. Minimum quantity on request.

Star handweel  
**BPF 630 L** >>

l = usable length

381

**Titanium = t**

BPF630L810Bt

**Nylon = ny**

BPF630L810Bny

Aluminium

Titanium

Nylon

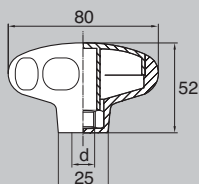
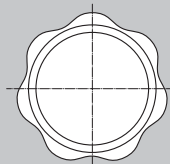
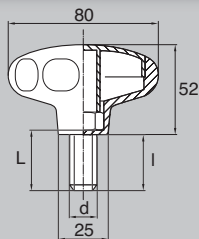
Stainless steel

Brass

Nut







## Male insert

d	L	I	Unit of sale	Part N° (Zinc-plated steel)
M10	16	12	100	BPF800L1016Baz
M10	20	16	100	BPF800L1020Baz
M10	25	21	100	BPF800L1025Baz
M10	30	26	100	BPF800L1030Baz
M10	35	31	100	BPF800L1035Baz
M10	40	36	100	BPF800L1040Baz
M10	45	41	100	BPF800L1045Baz
M10	50	46	100	BPF800L1050Baz
M10	60	56	100	BPF800L1060Baz
M10	70	66	100	BPF800L1070Baz
M10	80	76	100	BPF800L1080Baz
M12	16	13	100	BPF800L1216Baz
M12	20	17	100	BPF800L1220Baz
M12	25	27	100	BPF800L1225Baz
M12	30	22	100	BPF800L1230Baz
M12	35	32	100	BPF800L1235Baz
M12	40	37	100	BPF800L1240Baz
M12	45	42	100	BPF800L1245Baz
M12	50	47	100	BPF800L1250Baz
M12	60	57	100	BPF800L1260Baz
M12	70	67	100	BPF800L1270Baz
M12	80	77	100	BPF800L1280Baz

382

> When using a male insert we recommend a lock nut if fully tightening down to the end of the screw.  
(See picture page 342).

> Other lengths on request.



## Other material insert : example of part N° for male insert M10 x 16 :

Stainless steel = i	Brass = ms	Aluminium = al
BPF800L1016Bi	BPF800L1016Bms	BPF800L1016Bal

## Female insert

d	Unit of sale	Part N° (Zinc-plated steel)
M10	100	BPF800L10Baz
M12	100	BPF800L12Baz

## MATERIALS - COLOURS

### STANDARD :

- Head : black Nylon.
- Insert : zinc-plated steel.
- Tolerance "I" : +/- 1 mm.

### ON REQUEST :

- Male insert : Aluminium / Titanium / Nylon / Stainless steel / Brass.
- Female insert : Aluminium / Titanium / Nylon / Stainless steel / Brass / Zinc-plated steel self-locking nut.
- Head colours : see RAL colour chart page 510 / 511.  
Minimum quantity on request.



Star handwheel  
**BPF 800 L**



l = usable length

**Titanium = t**

BPF800L1016Bt

**Nylon = ny**

BPF800L1016Bny



Aluminium



Titanium



Nylon



Stainless steel



Brass



Nut





