

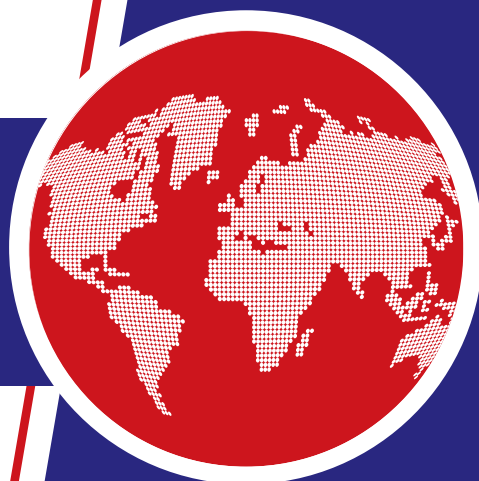
HINGES & Hardware

FOR INDUSTRIAL APPLICATIONS

INNOVATION
2018



NEW PRODUCTS
CATALOGUE **018**



PINET[®]

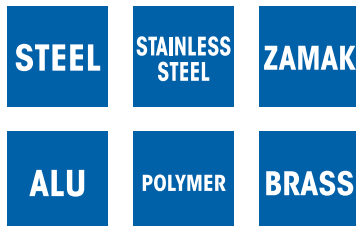
Icons for product selection

RoHS icon:



Complies with the RoHS directive

Materials icons:



Product materials

Spring hinge working direction icons:



Spring hinge closing



Spring hinge opening

Opening angle icons:



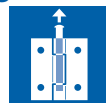
Opening angle of hinge

Lift-off hinge icon:



Lift-off hinge

Loose-pin butt hinge icon:



Loose-pin butt hinge

IP waterproofing icon:



IP65 protection

HINGES



Rolled knuckle continuous hinge - 25 mm width



Opening angle 270°. Other lengths and pin materials are available on request.

Specific drilling requirements are also available on request.

Hinge in raw galvanised steel is made of pregalvanised steel. Therefore any cut surface is ungalvanised.

Part number	Material	Finish	A	B	C	D	E	F	G	S	Pin material	Note	Weight (g)
40-1-3329	steel	raw	2040	25	0.8	2	15				steel	undrilled	440
40-1-3322	steel	raw	2040	25	0.8	2	15	14	60	2.8	steel	drilled	420
40-1-4677	galvanised steel	raw	1800	25	1.2	3	30				brass	undrilled	500
NEW 41-1-3559	5754 alu	raw	1000	25	0.8	2	15				steel	undrilled	88
NEW 42-1-3910	304 stainless steel	raw	1020	25	0.8	2	15				stainless steel	undrilled	224
42-1-3767	304 stainless steel	raw	2040	25	0.8	2	15				stainless steel	undrilled	448
42-1-4196	304 stainless steel	raw	2040	25	0.8	2	15	14	60	3.6	stainless steel	drilled	420
42-1-4096	304 stainless steel	raw	1800	25	1	2	15				stainless steel	undrilled	500
42-1-3949	304 stainless steel	raw	2040	25	1	2	15				stainless steel	undrilled	558
NEW 42-1-4546	316L stainless steel	raw	1980	25	0.8	2	15				stainless steel	undrilled	385



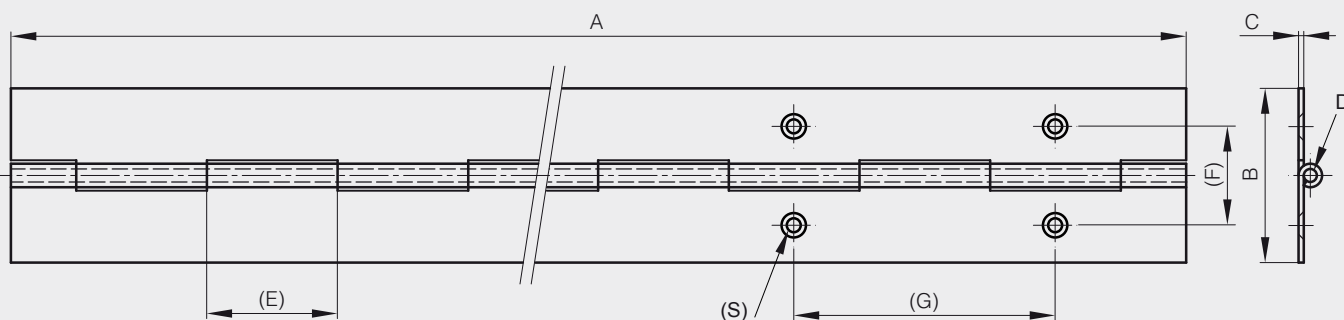
Rolled knuckle continuous hinge - 30 mm width



Opening angle 270°. Other lengths and pin materials are available on request.

Specific drilling requirements are also available on request.

Part number	Material	Finish	A	B	C	D	E	F	G	S	Pin material	Note	Weight (g)
40-1-3330	steel	raw	2040	30	0.8	2	15				steel	undrilled	510
40-1-3323	steel	raw	2040	30	0.8	2	15	16.8	60	3.9	steel	drilled	460
40-1-3679	steel	raw	2040	30	1	2	15				steel	undrilled	640
40-1-3680	steel	raw	2040	30	1	2	15	16.8	60	3.9	steel	drilled	640
40-1-4370	steel	raw	2000	30	2	6	30				steel	undrilled	1800
NEW 41-1-3560	5754 alu	raw	1980	30	1	2	15				aluminium	undrilled	205
NEW 42-1-3909	304 stainless steel	raw	1020	30	0.8	2	15				stainless steel	undrilled	255
42-1-3580	304 stainless steel	raw	2040	30	0.8	2	15				stainless steel	undrilled	510
42-1-4089	304 stainless steel	raw	1800	30	1	2	15				stainless steel	undrilled	500
42-1-3300	304 stainless steel	raw	2040	30	1	2	15				stainless steel	undrilled	670
42-1-4197	304 stainless steel	raw	2040	30	1	2	15	16.8	60	3.9	stainless steel	drilled	640
42-1-3950	304 stainless steel	raw	1995	30	1.5	4	30				stainless steel	undrilled	1283
42-1-3948	304 stainless steel	raw	1995	30	2	6	25				stainless steel	undrilled	1800
NEW 42-1-4082	316L stainless steel	raw	1020	30	1	2	15				stainless steel	undrilled	335
42-1-4000	316L stainless steel	raw	2040	30	1	2	15				stainless steel	undrilled	670



Rolled knuckle continuous hinge - 40 mm width



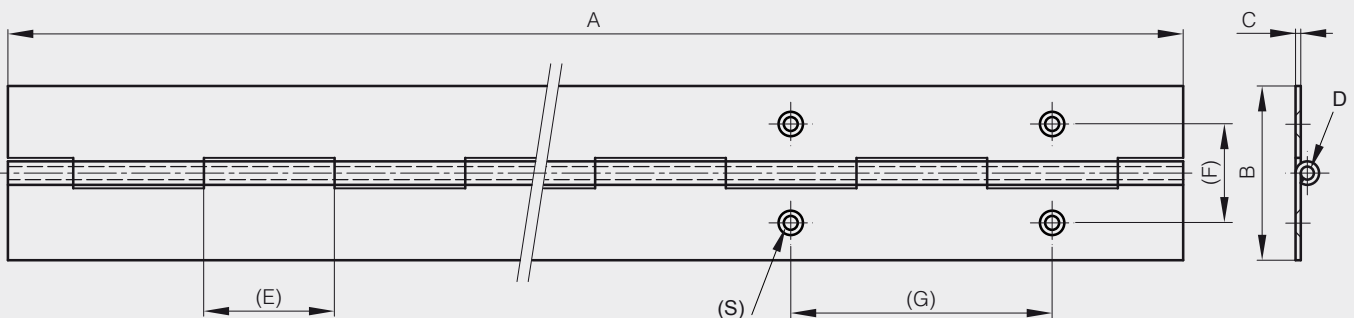
Opening angle 270°. Other lengths and pin materials are available on request.

Specific drilling requirements are also available on request.

Hinge in raw galvanised steel is made of pregalvanised steel. Therefore any cut surface is ungalvanised.



Part number	Material	Finish	A	B	C	D	E	F	G	S	Pin material	Note	Weight (g)
40-1-3703	steel	raw	2040	40	0.8	2	15				steel	undrilled	650
40-1-3681	steel	raw	2040	40	1.2	3	30				steel	undrilled	1000
40-1-3682	steel	raw	2040	40	1.2	3	30	22.7	60	4.2	steel	drilled	1000
40-1-4772	steel	raw	1950	40	1.5	3	12.5				steel	undrilled	1230
40-1-3683	steel	raw	2040	40	1.5	4	15				steel	undrilled	1400
40-1-4691	galvanised steel	raw	1800	40	1.2	3	30				brass	undrilled	1520
NEW 41-1-3540	5754 alu	raw	1000	40	1.2	3	30				aluminium	undrilled	178
41-1-3520	5754 alu	raw	2040	40	1.2	3	30				aluminium	undrilled	356
41-1-3521	5754 alu	raw	2000	40	1.5	4	15				aluminium	undrilled	500
NEW 42-1-4257	304 stainless steel	raw	1020	40	1.2	3	30				stainless steel	undrilled	500
42-1-4347	304 stainless steel	raw	1800	40	1.2	3	30				stainless steel	undrilled	940
42-1-4350	304 stainless steel	raw	2040	40	1.2	3	30				stainless steel	undrilled	1000
42-1-4349	304 stainless steel	raw	2040	40	1.2	3	30	22.7	60	4.2	stainless steel	drilled	1000
42-1-4461	304 stainless steel	raw	1950	40	1.5	3	12.5				stainless steel	undrilled	1230
42-1-3301	304 stainless steel	raw	2040	40	1.5	4	15				stainless steel	undrilled	1400
42-1-4199	304 stainless steel	raw	2040	40	1.5	4	15	22.7	60	4	stainless steel	drilled	1400
42-1-3770	304 stainless steel	raw	2040	44	2	6	30				stainless steel	undrilled	2463
NEW 42-1-4083	316L stainless steel	raw	1020	40	1.5	4	15				stainless steel	undrilled	700
42-1-4001	316L stainless steel	raw	2040	40	1.5	4	15				stainless steel	undrilled	1400
42-1-3665	430 stainless steel	raw	2040	40	0.8	2	15				stainless steel	undrilled	650



Rolled knuckle continuous hinge - 50 mm width



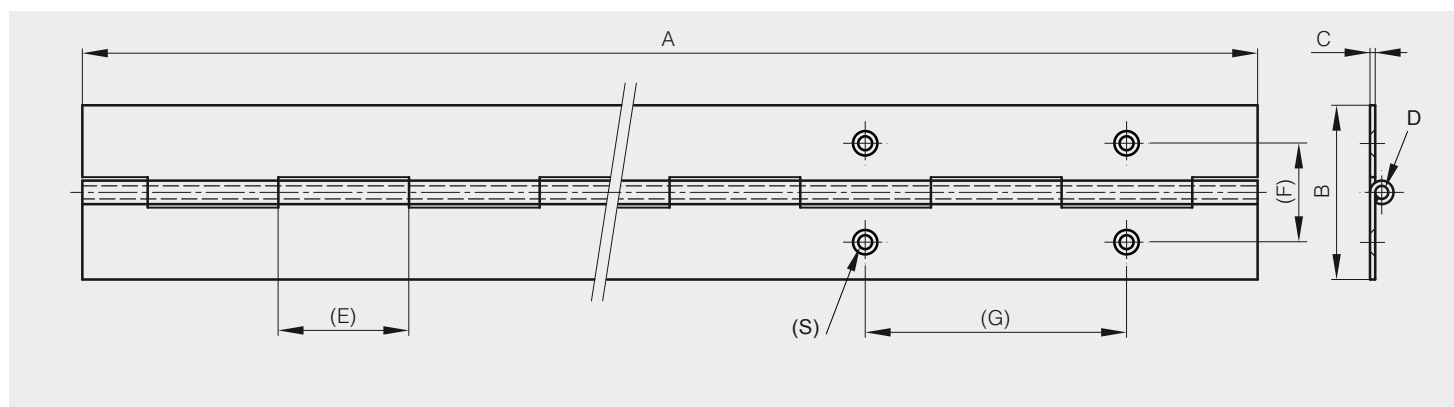
Opening angle 270°. Other lengths and pin materials are available on request.

Specific drilling requirements are also available on request.

Hinge in raw galvanised steel is made of pregalvanised steel. Therefore any cut surface is ungalvanised.



Part number	Material	Finish	A	B	C	D	E	F	G	S	Pin material	Note	Weight (g)
40-1-3704	steel	raw	2040	50	1.2	3	30				steel	undrilled	1300
40-1-3758	steel	raw	2040	50	1.2	3	30	28	60	4	steel	drilled	1270
40-1-4773	steel	raw	1950	50	1.5	3	12.5				steel	undrilled	1450
40-1-4355	steel	raw	2040	50	2	6	30				steel	undrilled	2486
40-1-4679	galvanised steel	raw	1800	50	1.2	3	30				brass	undrilled	1800
41-1-3531	5754 alu	raw	2040	50	1.2	3	30				aluminium	undrilled	459
NEW 41-1-3541	5754 alu	raw	1000	50	1.5	4	15				aluminium	undrilled	306
41-1-3522	5754 alu	raw	2000	50	1.5	4	15				aluminium	undrilled	612
NEW 42-1-4258	304 stainless steel	raw	1020	50	1.2	3	30				stainless steel	undrilled	650
42-1-4348	304 stainless steel	raw	1800	50	1.2	3	30				stainless steel	undrilled	1100
42-1-4353	304 stainless steel	raw	2040	50	1.2	3	30				stainless steel	undrilled	1300
42-1-4352	304 stainless steel	raw	2040	50	1.2	3	30	28	60	4	stainless steel	drilled	1270
42-1-4462	304 stainless steel	raw	1950	50	1.5	3	12.5				stainless steel	undrilled	1450
42-1-4219	304 stainless steel	raw	1800	50	1.5	4	15				stainless steel	undrilled	1500
42-1-3918	304 stainless steel	raw	2000	50	2	4	25				stainless steel	undrilled	2350
NEW 42-1-4259	316L stainless steel	raw	1020	50	1.2	3	20				stainless steel	undrilled	655
42-1-4354	316L stainless steel	raw	2040	50	1.2	3	30				stainless steel	undrilled	1310



Rolled knuckle continuous hinge - 57 mm width

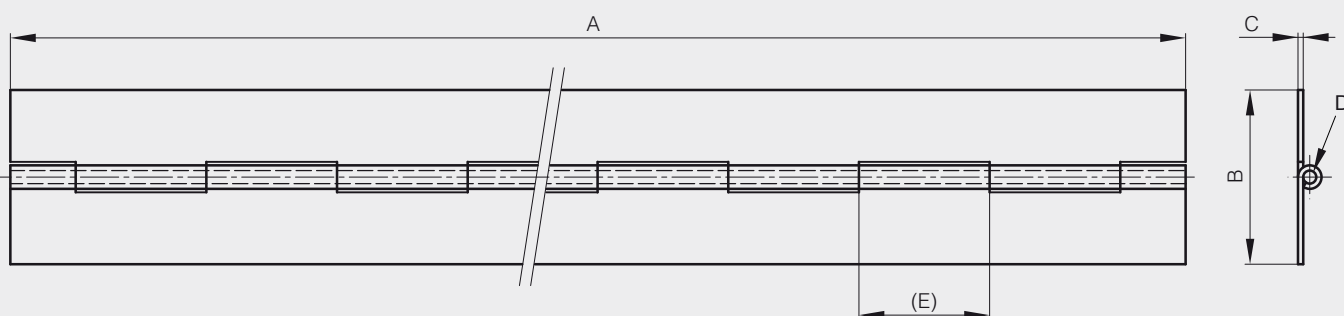
Opening angle 270°. Other lengths and pin materials are available on request.

Specific drilling requirements are also available on request.

Hinge in raw galvanised steel is made of pregalvanised steel. Therefore any cut surface is ungalvanised.



Part number	Material	Finish	A	B	C	D	E	Pin material	Note	Weight (g)
40-1-4680	galvanised steel	raw	2160	57	1.5	4	15	brass	undrilled	2000
40-1-4682	galvanised steel	raw	2160	57	2	6	30	brass	undrilled	2970
42-1-4220	304 stainless steel	raw	2160	57	1.5	4	15	stainless steel	undrilled	2000



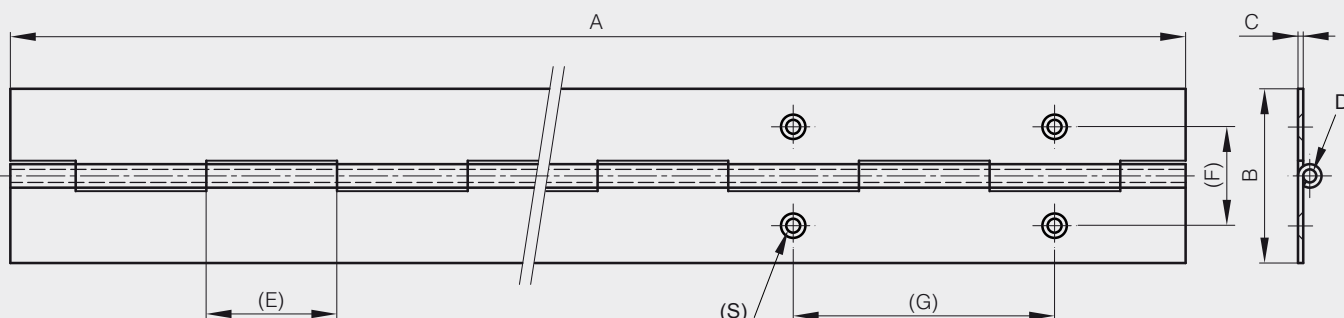
Rolled knuckle continuous hinge - 60 mm width

Opening angle 270°. Other lengths and pin materials are available on request.

Specific drilling requirements are also available on request.



Part number	Material	Finish	A	B	C	D	E	F	G	S	Pin material	Note	Weight (g)
40-1-3541	steel	raw	1995	60	1.5	5	40				steel	undrilled	1980
40-1-3335	steel	raw	2000	60	1.5	8	40				steel	undrilled	2600
40-1-4371	steel	raw	2040	60	2	6	30				steel	undrilled	2800
41-1-3523	5754 alu	raw	1995	60	2	6	30				aluminium	undrilled	998
NEW 42-1-4086	304 stainless steel	raw	1020	60	2	6	30				stainless steel	undrilled	1400
42-1-3302	304 stainless steel	raw	2040	60	2	6	30				stainless steel	undrilled	2800
42-1-4201	304 stainless steel	raw	2040	60	2	6	30	35	60	4	stainless steel	drilled	2800
NEW 42-1-4085	316L stainless steel	raw	1020	60	2	6	30				stainless steel	undrilled	1400
42-1-4002	316L stainless steel	raw	2040	60	2	6	30				stainless steel	undrilled	2800

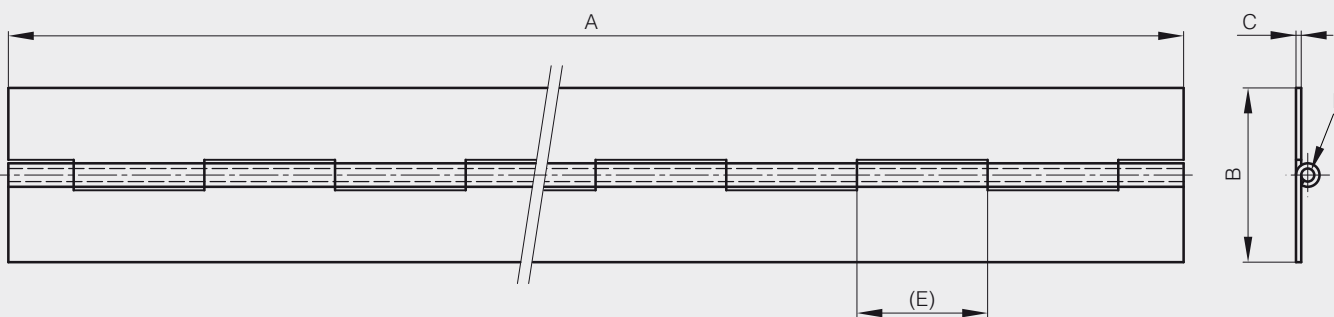


Rolled knuckle continuous hinge - 80 mm width



Opening angle 270°. Other lengths and pin materials are available on request.
Specific drilling requirements are also available on request.

Part number	Material	Finish	A	B	C	D	E	F	G	S	Pin material	Note	Weight (g)
40-1-4774	steel	raw	1950	80	1.5	3	12.5				steel	undrilled	2170
40-1-3542	steel	raw	2000	80	2	7.6	40				steel	undrilled	3900
40-1-4369	steel	raw	2000	80	3	6	40				steel	undrilled	5060
41-1-3558	5754 alu	raw	1995	80	3	6	40				aluminium	undrilled	1780
42-1-4463	304 stainless steel	raw	1950	80	1.5	3	12.5				stainless steel	undrilled	2170
42-1-3304	304 stainless steel	raw	1000	80	3	6	40				stainless steel	undrilled	2530
42-1-3569	304 stainless steel	raw	2000	80	3	6	40				stainless steel	undrilled	5060
NEW 42-1-4547	304 stainless steel	raw	2000	80	3	6	40	35	60	5.2	stainless steel	drilled	5000
NEW 42-1-4548	316L stainless steel	raw	1980	80	2	6	30				stainless steel	undrilled	3470

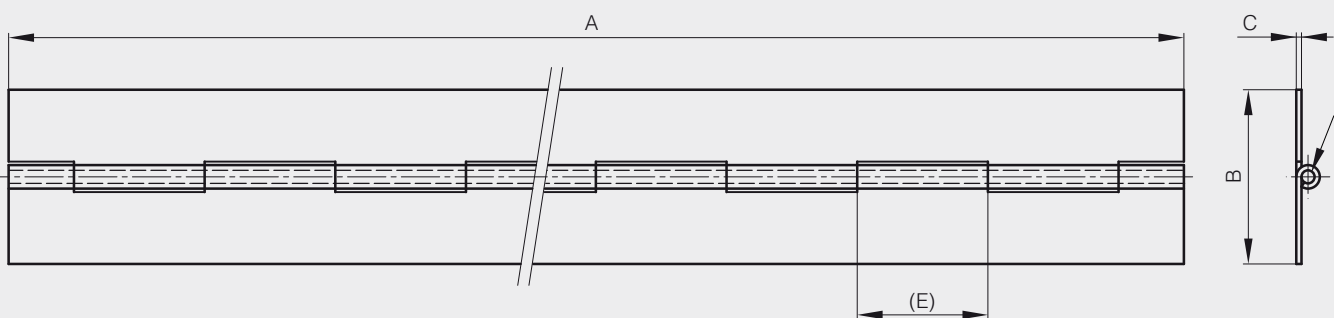


Rolled knuckle continuous hinge - 100 mm width



Opening angle 270°. Other lengths and pin materials are available on request.
Specific drilling requirements are also available on request.

Part number	Material	Finish	A	B	C	D	E	Pin material	Note	Weight (g)
40-1-3543	steel	raw	2000	100	3	10	40	steel	undrilled	7100
40-1-4769	steel	raw	1000	100	4	10	40	steel	undrilled	4690
NEW 41-1-3561	5754 alu	raw	1000	100	4	10	40	steel	undrilled	2030
42-1-4459	304 stainless steel	raw	2000	100	3	6	40	stainless steel	undrilled	5930
42-1-4458	304 stainless steel	raw	1995	100	3	10	40	stainless steel	undrilled	7110

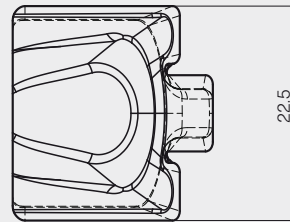
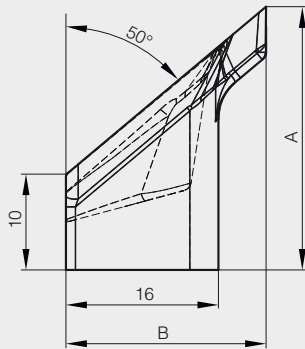


Humidity drain gasket

Moisture collector to be positioned on the floor in line with the double knuckle hinge (when closed).



	Part number	Material	A	B	Weight (g)
NEW	99-7-3691	polyurethane	27.6	21	3



Concealed hinges

Concealed hinges for surface mounted doors only

Concealed hinge with removable pin - 110° opening

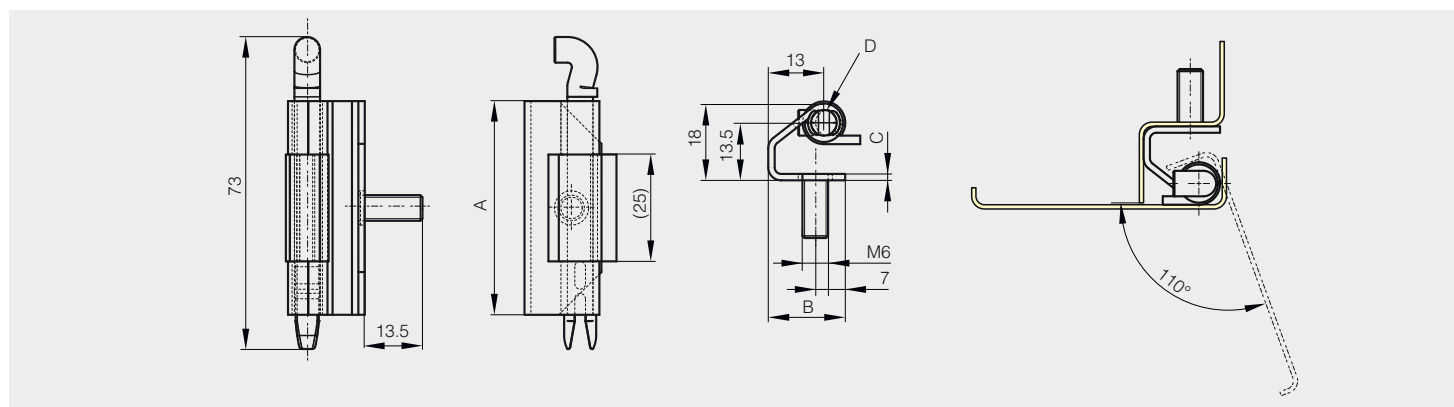
Male leaf in raw steel.

Female leaf in zinc plated steel with stud.

Removable pin in POM.



Part number	Material	Finish	A	B	C	Pin	Note	Weight (g)
NEW 60-1-3918	steel	raw / zinc plated	50	18	2	POM pin	male leaf in raw steel	40

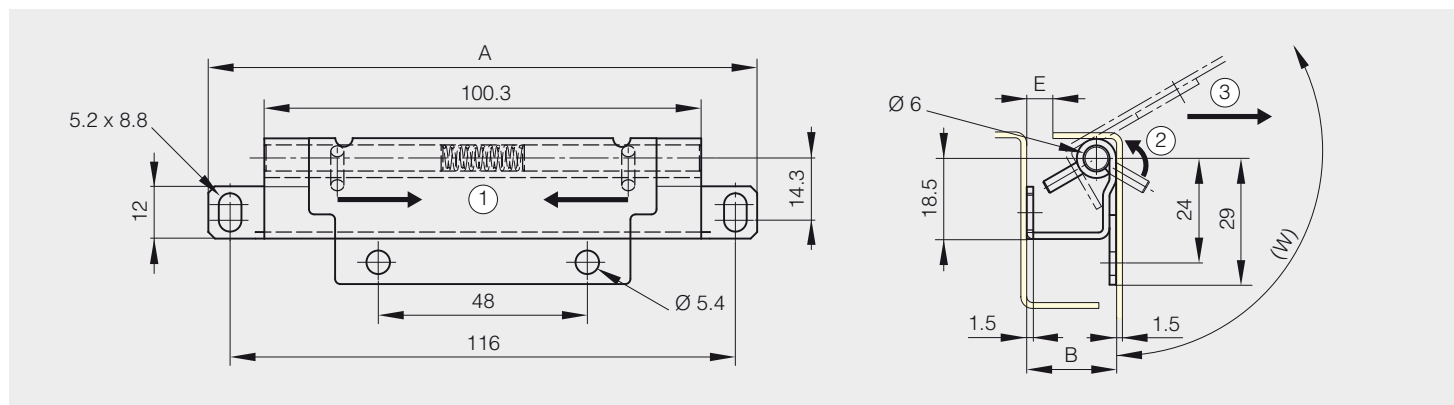


Concealed hinges with retractable pin

Quick-release concealed hinge for tool-free door removal with fixed retractable pin.



Part number	Material	Finish	A	B	E	W	Weight (g)
62-1-9000	stainless steel	raw	126	17.5	3	122°	73
62-1-9001	stainless steel	raw	126	20.5	4	117°	84
62-1-9002	stainless steel	raw	126	23.9	4.5	112°	100



Concealed hinges with spring - 95° opening



Concealed hinges with 2 positions:

- Closing position: door remains open with an angle of 10°.
- Opening position: door opens up to 95°.

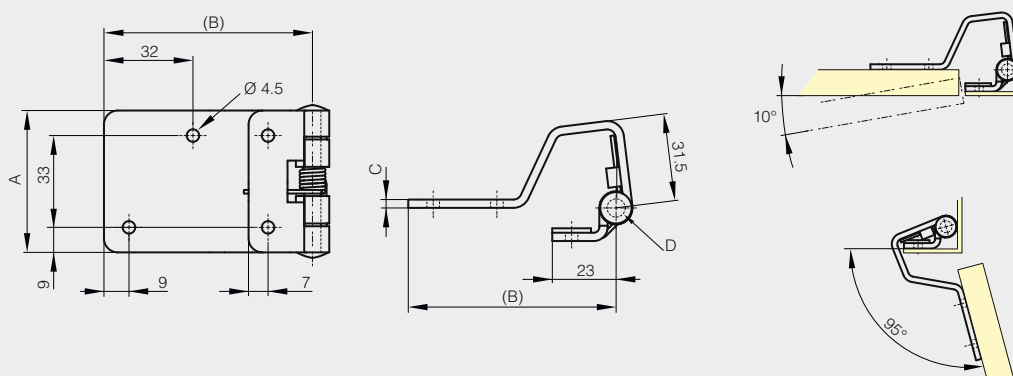
Closing of door due to spring action and door remains slightly opened.

Applications for parcel box:

- Door automatically opens after code entry.
- Door doesn't remain in opening position.



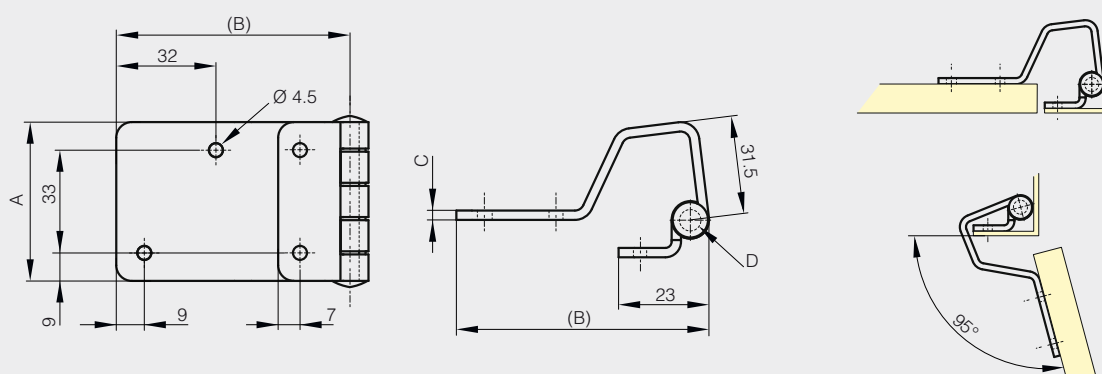
	Part number	Material	Finish	A	B	C	D	Weight (g)
NEW	71-1-3812	steel	zinc plated	51	75	3	6	200
NEW	71-1-3867	304 stainless steel	raw	51	75	3	6	200



Concealed hinges without spring - 95° opening



	Part number	Material	Finish	A	B	C	D	Weight (g)
NEW	60-1-4007	steel	zinc plated	51	75	3	6	210
NEW	62-1-4008	304 stainless steel	raw	51	75	3	6	210



Concealed hinges

Concealed hinges for nested doors only

Concealed hinge with friction - 180° opening

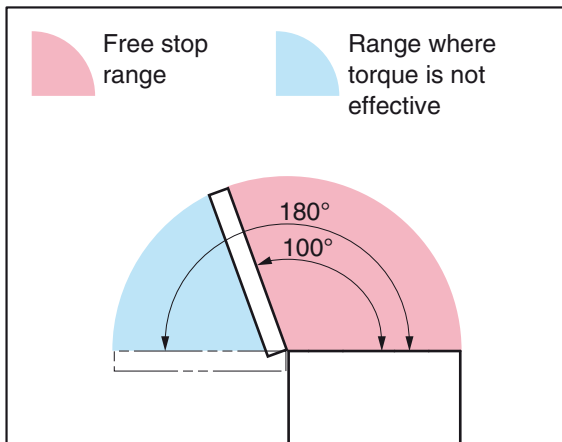
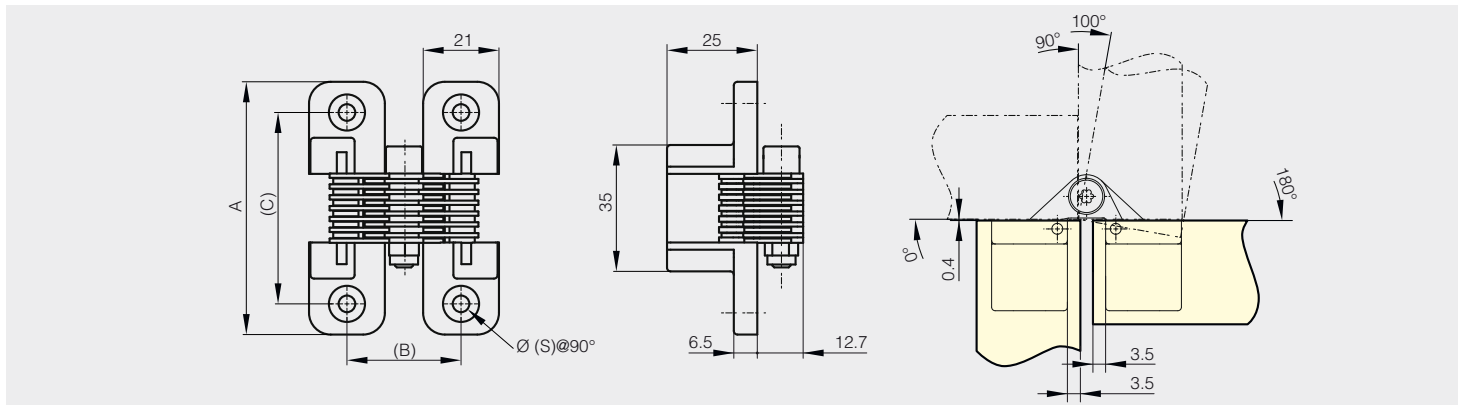


180° opening angle.

Free stop for safety. Maximum friction torque of 5 N.m for one hinge (when lid is closed).

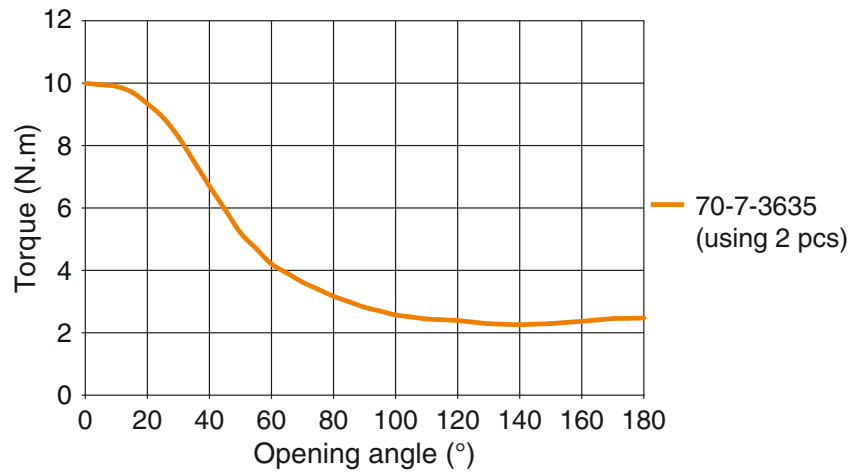
Torque decreases as the opening angle increases, making easier to open the lid.

	Part number	Material	Finish	A	B	C	S	Weight (g)
NEW	70-7-3635	zinc die-cast	satin chrome	70	31.6	53	4.6	160



Install stopper to hold the door within the range where torque is not effective.

Torque curve



Concealed hinges

Concealed hinges for surface mounted doors or nested doors

Concealed hinges - 90° opening

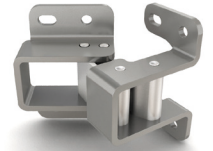


Pins and links in 430 stainless steel for 70-1-3520.
 Pins and links in 316L stainless steel for 70-1-3625.
 Mounting features:

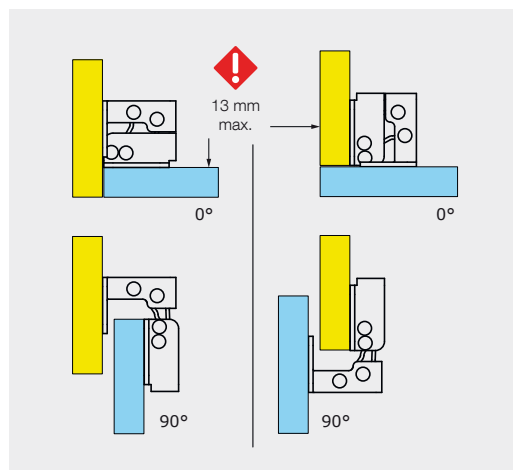
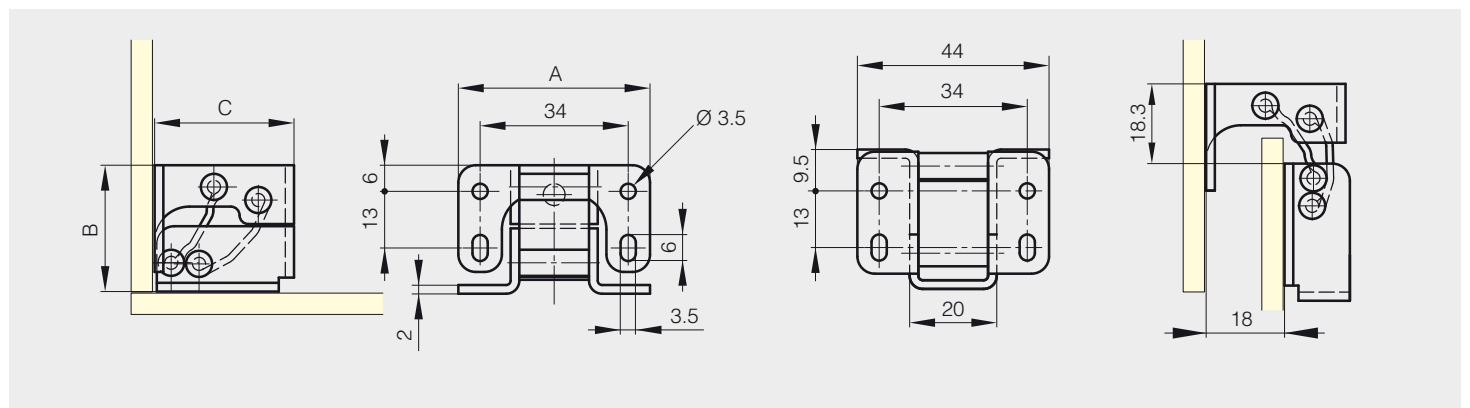
- For nested doors or surface mounted doors.
- LH or RH options.
- For horizontal or vertical applications.

A full product data sheet is available on our website.

Refer to the product data sheet on our website for mounting instructions.

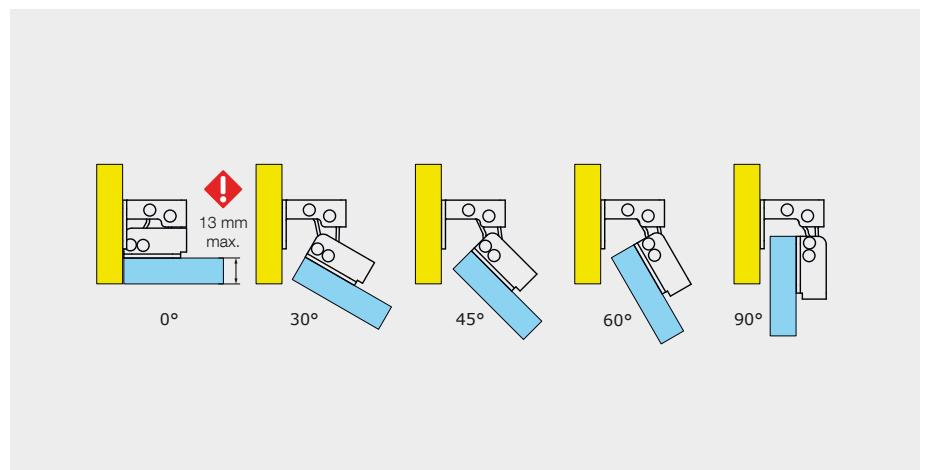


Part number	Material	Finish	A	B	C	Weight (g)
70-1-3520	steel	zinc plated	44	29	32	64
NEW 70-1-3625	316L stainless steel	raw	44	29	32	64



Nested door assembly shown

Surface mounted assembly shown



Nested door assembly shown

Concealed hinges

Concealed hinges for surface mounted doors or nested doors

Concealed hinges - 125° opening



Links in aluminium.

Pins in 430 stainless steel for 70-1-3639.

Pins in 304 Cu stainless steel for 70-1-3640.

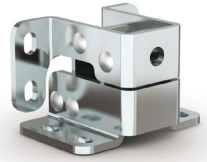
Mounting features:

- For nested doors or surface mounted doors.
- LH or RH options.
- For horizontal or vertical applications.

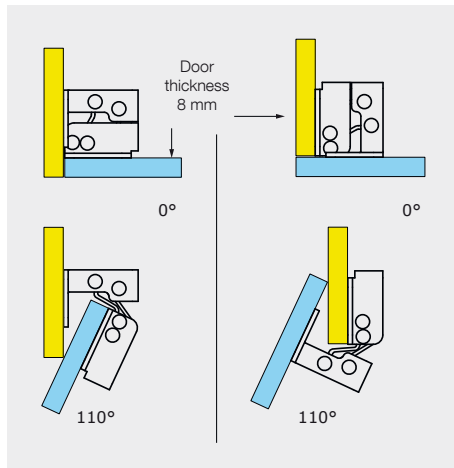
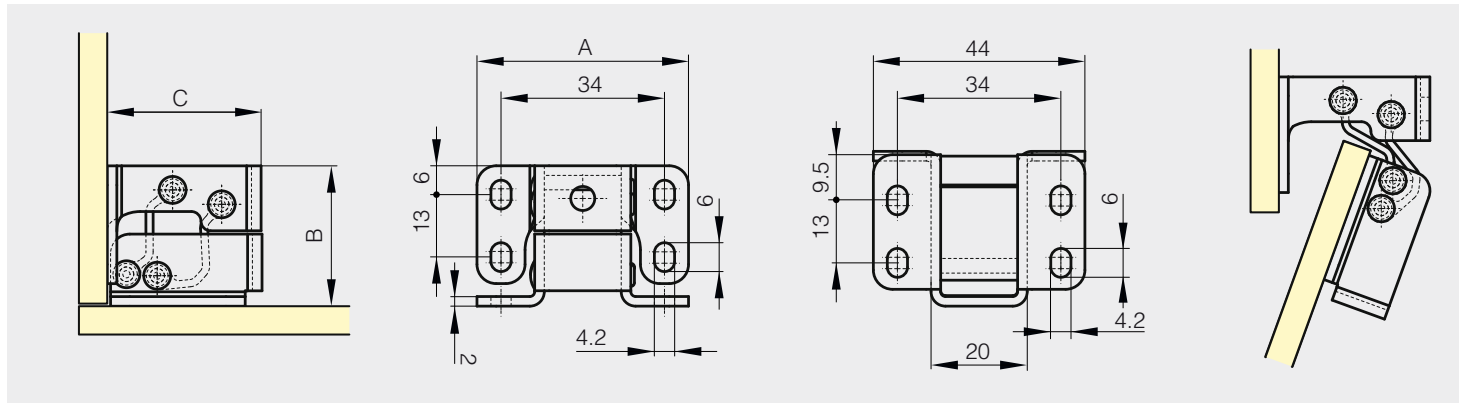
Opening angle differs according to door thickness:

- 2 mm thickness: opening angle of 125°.
- 8 mm thickness: opening angle of 110°.
- 13 mm thickness: opening angle of 100°.

Please ask us for bespoke solutions.

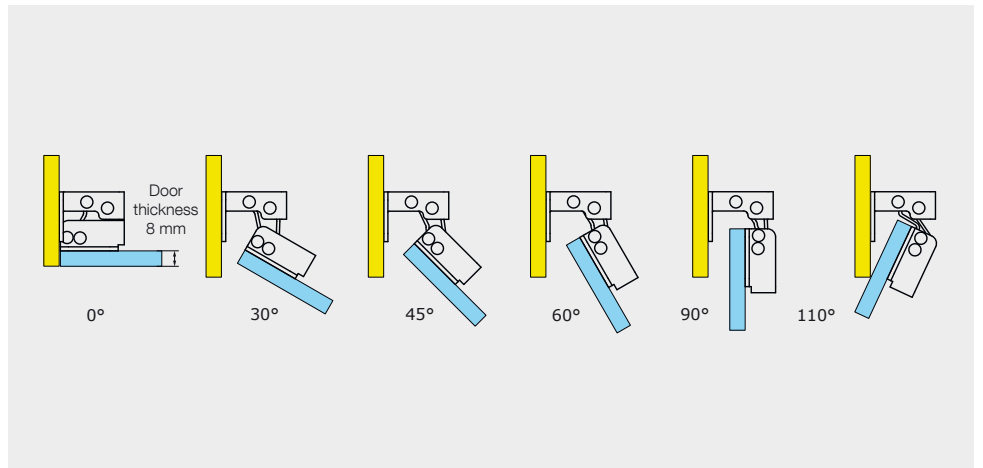


	Part number	Material	Finish	A	B	C	Weight (g)
NEW	70-1-3639	steel	zinc plated	44	29	32	60
NEW	70-1-3640	316L stainless steel	raw	44	29	32	60



Nested door assembly shown

Surface mounted assembly shown



Nested door assembly shown

Concealed hinges

Concealed hinges for surface mounted doors or nested doors

Concealed hinge - 110° opening

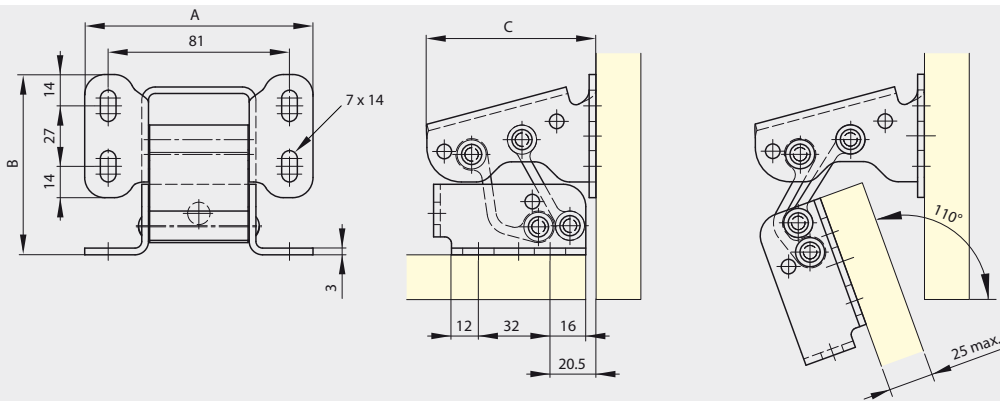
Heavy duty concealed hinge.

Tested to 10,000 cycles using 2 hinges with a door weight of 25 kg measuring 1 m x 1 m.

Links in anodised aluminium.



Part number	Material	Finish	A	B	C	Weight (g)
70-1-3557	steel	zinc plated	102	80.5	76	520



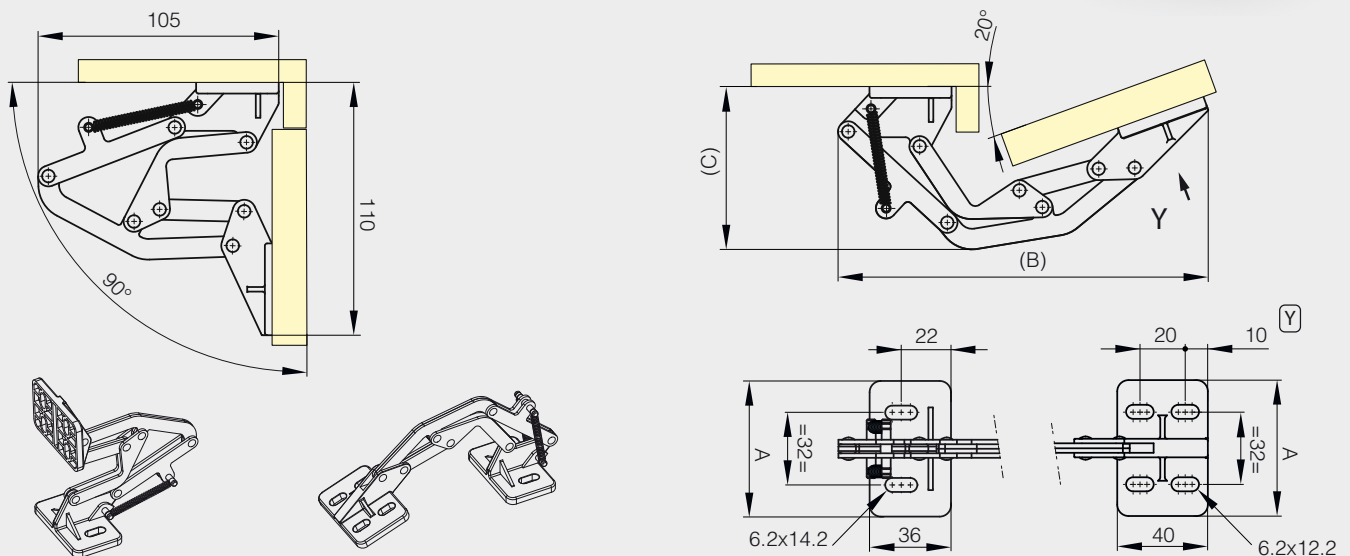
Spring loaded concealed hinge - 110° opening

For horizontal application only.

Fixing plate in polymer.



Part number	Material	Finish	A	B	C	Weight (g)
NEW 71-1-3611	steel	black zinc plated	60	162.4	71.4	132



Concealed hinges

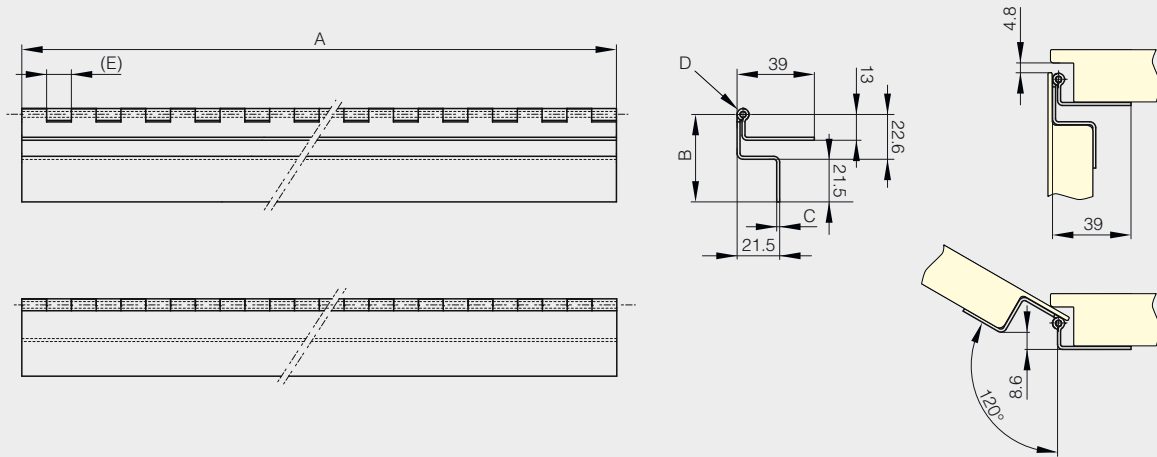
Concealed hinges for surface mounted doors or nested doors

Concealed hinges with two cranked leaves - undrilled - 120° opening - version A

Hinges for side door of baggage compartment (bus and coach, bodywork...)



	Part number	Material	Finish	A	B	C	D	E	Weight (g)
NEW	39-1-3885	304 stainless steel	raw	300	44.1	1.5	3	12.5	440
NEW	39-1-3887	304 stainless steel	raw	600	44.1	1.5	3	12.5	880



Concealed hinges with two cranked leaves - drilled - 120° opening - version A

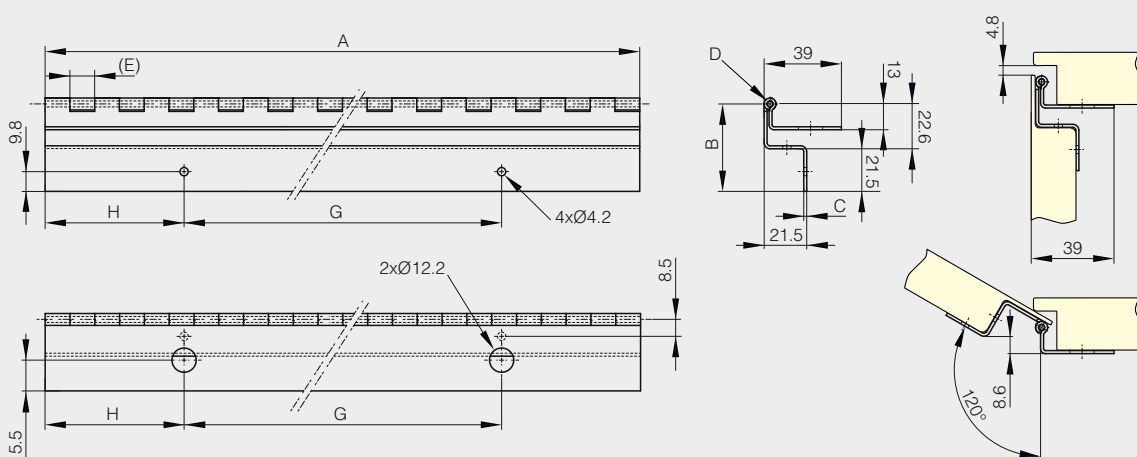
Hinges for side door of baggage compartment (bus and coach, bodywork...)

Use rivets for 4.2 diameter holes (door side).

Use self-drilling screws for 12.2 diameter holes (frame side).



	Part number	Material	Finish	A	B	C	D	E	G	H	Weight (g)
NEW	39-1-3886	304 stainless steel	raw	300	44.1	1.5	3	12.5	160	70	430
NEW	39-1-3888	304 stainless steel	raw	600	44.1	1.5	3	12.5	160	60	870

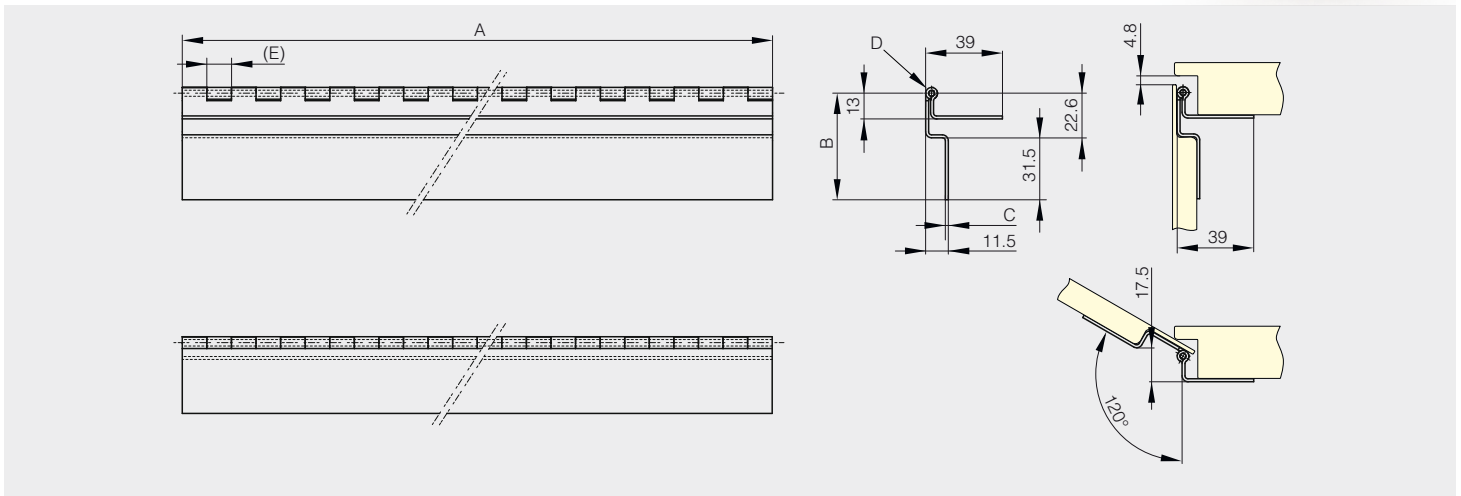


Concealed hinges with two cranked leaves - undrilled - 120° opening - version B

Hinges for side door of baggage compartment (bus and coach, bodywork...)



Part number	Material	Finish	A	B	C	D	E	Weight (g)
NEW 39-1-3889	304 stainless steel	raw	300	54.1	1.5	3	12.5	410
NEW 39-1-3891	304 stainless steel	raw	600	54.1	1.5	3	12.5	870



Concealed hinges with two cranked leaves - drilled - 120° opening - version B

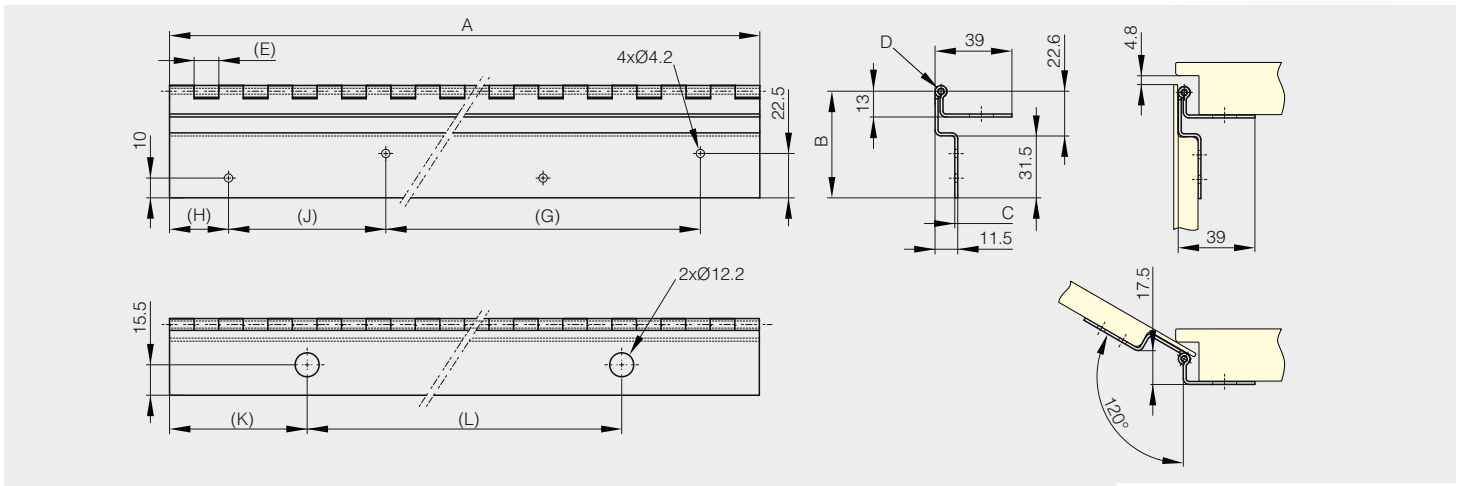
Hinges for side door of baggage compartment (bus and coach, bodywork...)

Use rivets for 4.2 diameter holes (door side).

Use self-drilling screws for 12.2 diameter holes (frame side).



Part number	Material	Finish	A	B	C	D	E	G	H	J	K	L	Weight (g)
NEW 39-1-3890	304 stainless steel	raw	300	54.1	1.5	3	12.5	160	30	80	70	160	430
NEW 39-1-3892	304 stainless steel	raw	600	54.1	1.5	3	12.5	260	40	130	60	160	870



Hinges with dual function

Spring hinges - aluminium profile

Spring hinges - aluminium profile 0.20 N.m



Opening spring force:

M(0°): 0.23 N.m / M(90°): 0.15 N.m / M(180°): 0.08 N.m

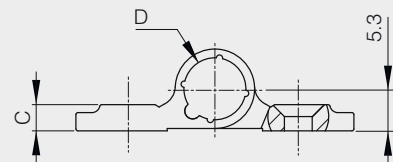
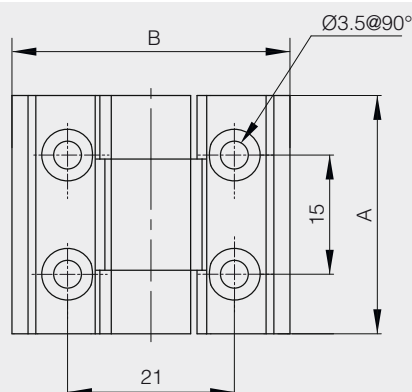
Closing spring force:

M(0°): 0.08 N.m / M(90°): 0.15 N.m / M(180°): 0.23 N.m

2 other versions available: with friction or with detent mechanism.



Part number	Material	Finish	A	B	C	D	Note	Weight (g)
72-1-4256	6060 T5 alu	clear anodised	30	35	3.3	8	opening spring	10
72-1-4257	6060 T5 alu	black anodised	30	35	3.3	8	opening spring	10
NEW 72-1-4275	6060 T5 alu	clear anodised	30	35	3.3	8	closing spring	10
NEW 72-1-4276	6060 T5 alu	black anodised	30	35	3.3	8	closing spring	10



Spring hinges - aluminium profile 0.35 N.m



Opening spring force:

M(0°): 0.35 N.m / M(90°): 0.24 N.m / M(180°): 0.12 N.m

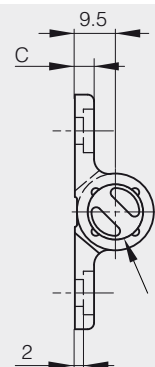
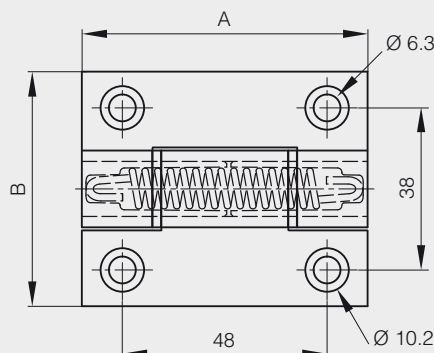
Closing spring force:

M(0°): 0.12 N.m / M(90°): 0.24 N.m / M(180°): 0.35 N.m

3 other versions available: free swinging, with friction or with detent mechanism.



Part number	Material	Finish	A	B	C	D	Note	Weight (g)
72-1-4220	6060 T5 alu	clear anodised	67	55	4.5	13	opening spring	60
72-1-4221	6060 T5 alu	black anodised	67	55	4.5	13	opening spring	60
NEW 72-1-4292	6060 T5 alu	clear anodised	67	55	4.5	13	opening spring/ delivered flat	60
NEW 72-1-4293	6060 T5 alu	black anodised	67	55	4.5	13	opening spring/ delivered flat	60
NEW 72-1-4286	6060 T5 alu	clear anodised	67	55	4.5	13	closing spring	60
NEW 72-1-4287	6060 T5 alu	black anodised	67	55	4.5	13	closing spring	60



FIXORSL

Calle del Dr. Mata num 5, 08203 Sabadell
Tel 93 710 41 60, tecnica@fixores
www.fixores

Hinges with dual function

Spring hinges - aluminium profile

Spring hinges - aluminium profile 0.70 N.m



Opening spring force:

M(0°): 0.7 N.m / M(90°): 0.45 N.m / M(180°): 0.23 N.m

Closing spring force:

M(0°): 0.23 N.m / M(90°): 0.45 N.m / M(180°): 0.7 N.m

3 other versions available: free swinging, with friction or with detent mechanism.



Part number	Material	Finish	A	B	C	D	Note	Weight (g)
72-1-4218	6060 T5 alu	clear anodised	67	55	4.5	13	opening spring	65
72-1-4219	6060 T5 alu	black anodised	67	55	4.5	13	opening spring	65
NEW 72-1-4294	6060 T5 alu	clear anodised	67	55	4.5	13	opening spring / delivered flat	65
NEW 72-1-4295	6060 T5 alu	black anodised	67	55	4.5	13	opening spring / delivered flat	65
NEW 72-1-4272	6060 T5 alu	clear anodised	67	55	4.5	13	closing spring	65
NEW 72-1-4273	6060 T5 alu	black anodised	67	55	4.5	13	closing spring	65

Spring hinges - aluminium profile 1.3 N.m



Opening spring force:

M(0°): 1.3 N.m / M(90°): 1.1 N.m / M(180°): 0.9 N.m

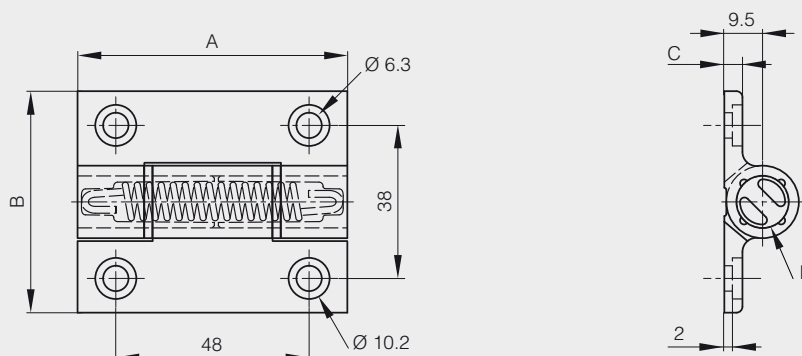
Closing spring force:

M(0°): 0.9 N.m / M(90°): 1.1 N.m / M(180°): 1.3 N.m

3 other versions available: free swinging, with friction or with detent mechanism.



Part number	Material	Finish	A	B	C	D	Note	Weight (g)
72-1-4222	6060 T5 alu	clear anodised	67	55	4.5	13	opening spring	67
72-1-4223	6060 T5 alu	black anodised	67	55	4.5	13	opening spring	67
NEW 72-1-4296	6060 T5 alu	clear anodised	67	55	4.5	13	opening spring / delivered flat	67
NEW 72-1-4297	6060 T5 alu	black anodised	67	55	4.5	13	opening spring / delivered flat	67
72-1-4260	6060 T5 alu	clear anodised	67	55	4.5	13	closing spring	67
72-1-4261	6060 T5 alu	black anodised	67	55	4.5	13	closing spring	67



Hinges with dual function

Rolled knuckle spring hinges

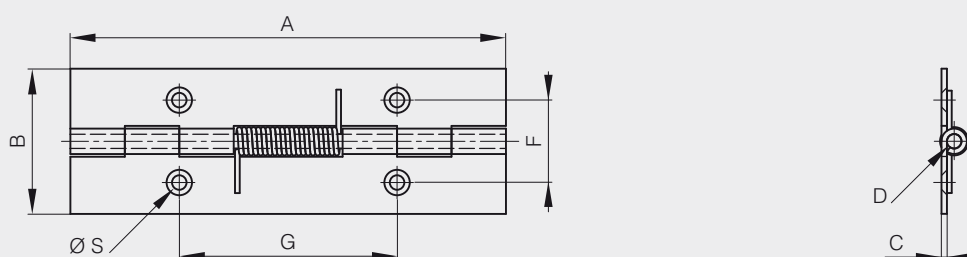
Opening spring hinges 120 mm long

Opening spring force:
 $M(0^\circ)$: 0.85 N.m / $M(90^\circ)$: 0.56 N.m / $M(180^\circ)$: 0.28 N.m



Stainless steel spring.

Part number	Material	Finish	A	B	C	D	F	G	S	Note	Weight (g)
71-1-3799	steel	raw	120	40	1.5	4				undrilled	82
71-1-3805	steel	zinc plated	120	40	1.5	4	22.7	60	4	drilled	82
NEW 71-1-3860	5754 alu	raw	120	40	1.5	4				undrilled	45
NEW 71-1-3861	5754 alu	raw	120	40	1.5	4	22.7	60	4	drilled	45
71-1-3787	304 stainless steel	raw	120	40	1.5	4				undrilled	82
71-1-3793	304 stainless steel	raw	120	40	1.5	4	22.7	60	4	drilled	82



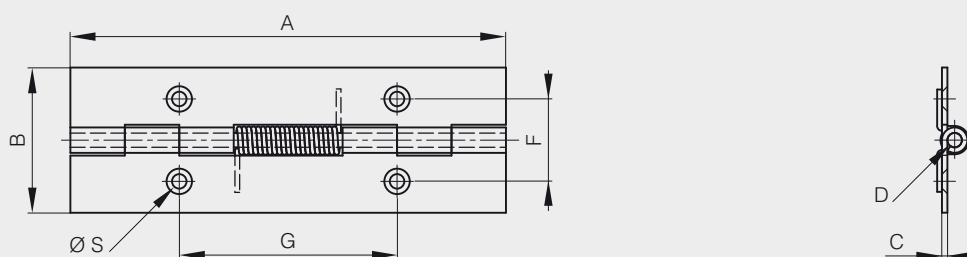
Closing spring hinges 120 mm long

Closing spring force:
 $M(0^\circ)$: 0.28 N.m / $M(90^\circ)$: 0.56 N.m / $M(180^\circ)$: 0.85 N.m



Stainless steel spring.

Part number	Material	Finish	A	B	C	D	F	G	S	Note	Weight (g)
71-1-3802	steel	raw	120	40	1.5	4				undrilled	82
71-1-3808	steel	zinc plated	120	40	1.5	4	22.7	60	4	drilled	82
NEW 71-1-3862	5754 alu	raw	120	40	1.5	4				undrilled	45
NEW 71-1-3863	5754 alu	raw	120	40	1.5	4	22.7	60	4	drilled	45
71-1-3790	304 stainless steel	raw	120	40	1.5	4				undrilled	82
71-1-3796	304 stainless steel	raw	120	40	1.5	4	22.7	60	4	drilled	82



Hinges with dual function

Rolled knuckle spring hinges

Spring hinges 50 mm long



Opening spring force:

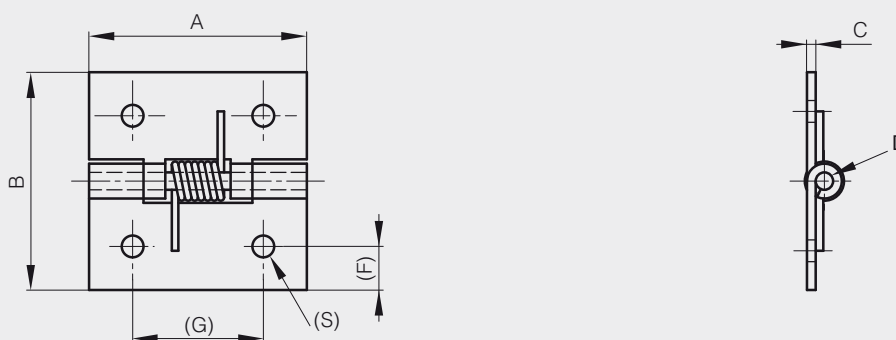
M(0°): 1.5 N.m / M(90°): 1.1 N.m / M(180°): 0.65 N.m

Closing spring force:

M(0°): 0.25 N.m / M(90°): 0.65 N.m / M(180°): 1.1 N.m



Part number	Material	Finish	A	B	C	D	F	G	S	Note	Weight (g)
71-1-3519	steel	zinc plated	50	50	2	4	9	30	5	stainless steel opening spring	50
71-1-3619	steel	zinc plated	50	50	2	4	9	30	5	stainless steel closing spring	50
NEW 71-1-3856	5754 alu	raw	50	50	2	4	9	30	5	Bezinal steel opening spring	22
NEW 71-1-3857	5754 alu	raw	50	50	2	4	9	30	5	Bezinal steel closing spring	22
71-1-3553	304 stainless steel	raw	50	50	2	4	10	30	5	stainless steel opening spring	50
71-1-3586	304 stainless steel	raw	50	50	2	4	10	30	5	stainless steel closing spring	50



Spring hinges 60 mm long - with 2 holes



Opening spring force:

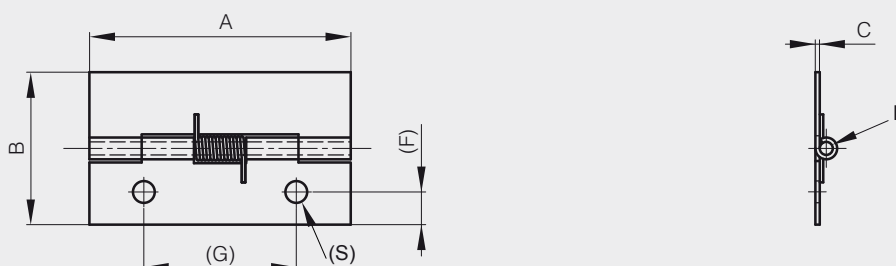
M(0°): 0.09 N.m / M(90°): 0.07 N.m / M(180°): 0.045 N.m

Closing spring force:

M(0°): 0.045 N.m / M(90°): 0.07 N.m / M(180°): 0.09 N.m



Part number	Material	Finish	A	B	C	D	F	G	S	Note	Weight (g)
71-1-3306	steel	raw	60	35	1	3	7.5	35	5	steel opening spring	22
71-1-3579	steel	raw	60	35	1	3	7.5	35	5	stainless steel opening spring	22
71-1-3617	steel	raw	60	35	1	3	7.5	35	5	stainless steel closing spring	22



Hinges with dual function

Rolled knuckle spring hinges

Opening spring hinge 105 mm long



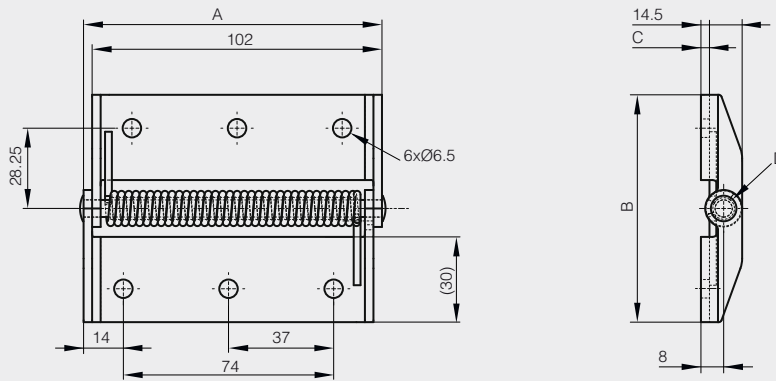
Opening spring force:

M(0°): 1.2 N.m / M(90°): 1.7 N.m / M(180°): 2.2 N.m

Pin in 304 stainless steel. Spring in Bezinal steel.



	Part number	Material	Finish	A	B	C	D	Weight (g)
NEW	71-1-3851	steel	zinc plated	105	80	3	6	150



Spring hinges 160 mm long



Opening spring force for part numbers 71-1-3580 and 71-1-3581:

M(0°): 0.9 N.m / M(90°): 0.86 N.m / M(180°): 0.6 N.m

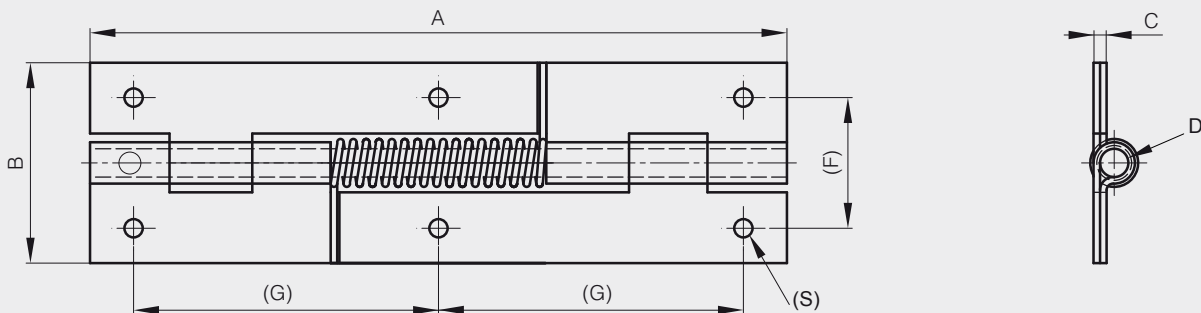
Closing spring force for part numbers 71-1-3618 and 71-1-3835:

M(0°): 0.12 N.m / M(90°): 0.44 N.m / M(180°): 0.55 N.m

Punched pin.



Part number	Material	Finish	A	B	C	D	F	G	S	Note	Weight (g)
71-1-3580	steel	raw	160	46	3	6.5	30	70	4.2	stainless steel opening spring	208
71-1-3618	steel	raw	160	46	3	6.5	30	70	4.2	stainless steel closing spring	208
71-1-3581	304 stainless steel	raw	160	46	3	6.5	30	70	4.2	stainless steel opening spring	208
71-1-3835	304 stainless steel	raw	160	46	3	6.5	30	70	4.2	stainless steel closing spring	208



FIXOR_{SL}

Calle del Dr. Mata num 5, 08203 Sabadell
Tel 93 710 41 60, tecnica@fixor.es
www.fixor.es

Hinges with dual function

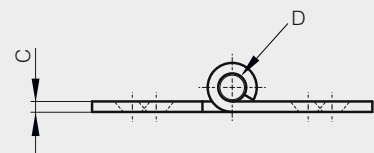
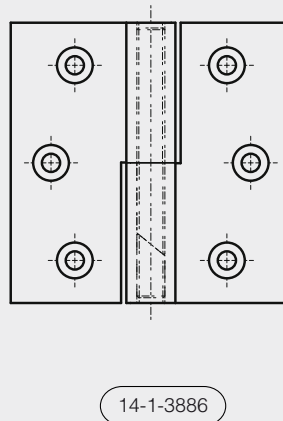
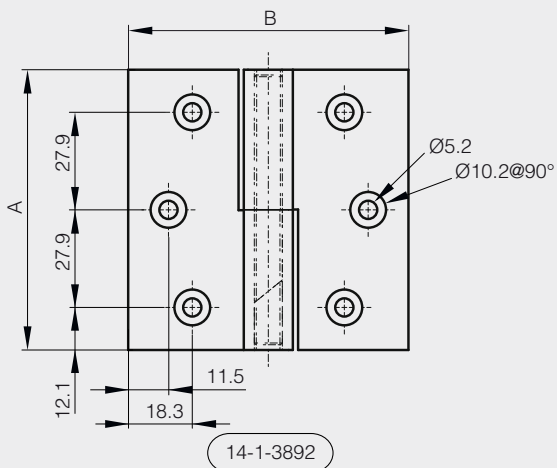
Lift-off rising hinges

Lift-off rising hinge in stainless steel

Ramp integrated in the pin allows automatic closing by gravity.



Part number	Material	Finish	A	B	C	D	Note	Weight (g)
NEW 14-1-3886	304 stainless steel	brushed	80	80	3	8	type 2	216
NEW 14-1-3892	304 stainless steel	brushed	80	80	3	8	type 1	216



Hinges with dual function

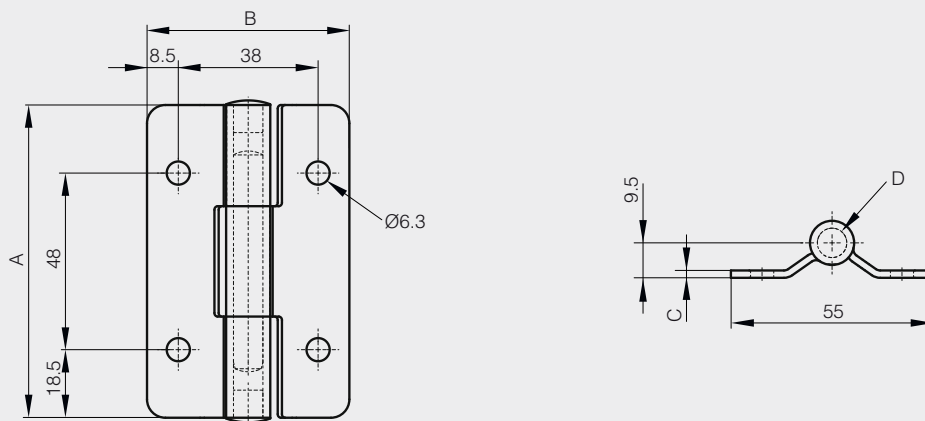
Friction hinges

Friction hinge in stainless steel - friction torque 3 N.m



Constant torque. Stable at various temperatures.
Pin in steel.

Part number	Material	Finish	A	B	C	D	Torque	Note	Weight (g)
NEW 62-1-3710	301 stainless steel	raw	85	55	2	8	3 N.m	with friction	120
NEW 62-1-3711	301 stainless steel	raw	85	55	2	8		no torque	120



Friction hinge in stainless steel - friction torque 5 N.m

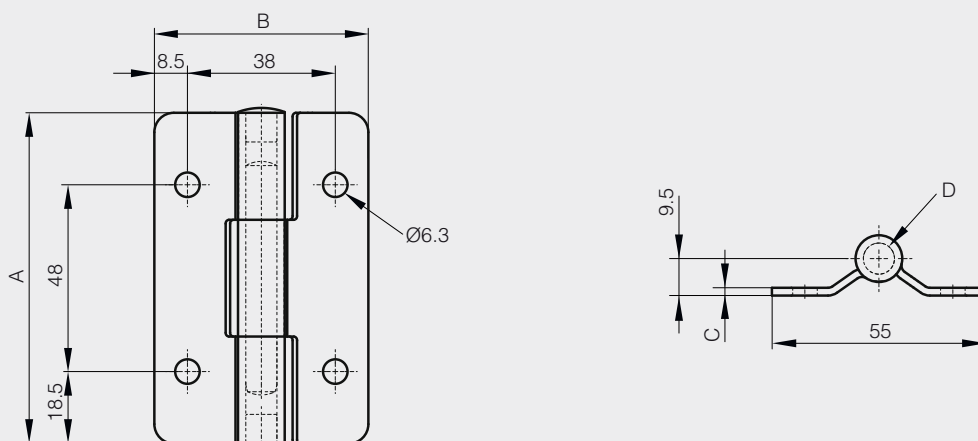


Constant torque. Stable at various temperatures.
Pin in steel.

Part number	Material	Finish	A	B	C	D	Torque	Note	Weight (g)
NEW 62-1-3712	301 stainless steel	raw	85	55	2	12	5 N.m	with torque	155
NEW 62-1-3713	301 stainless steel	raw	85	55	2	12		no torque	155



FIXOR^{SL}
Calle del Dr. Mata num 5, 08203 Sabadell
Tel 93 710 41 60, tecnica@fixor.es
www.fixor.es



Hinges with dual function

Friction hinges

Swivel torque hinge - torque 2 N.m

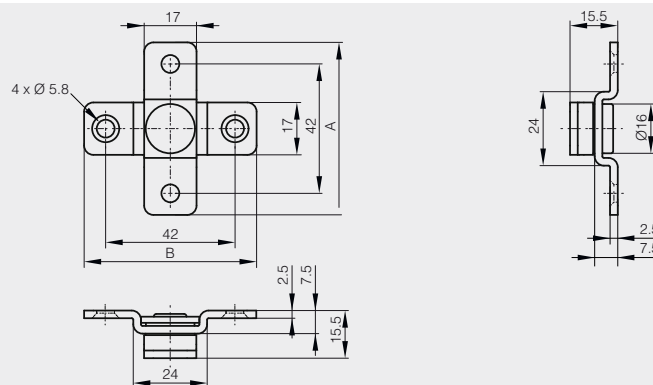


Rotation angle: 360°.

Friction torque: 2 N.m.

For indoor applications (industrial control panels and monitors).

	Part number	Material	Finish	A	B	Torque	Weight (g)
NEW	70-7-3636	430 stainless steel	polished	56	56	2 N.m	49



Swivel torque hinge with hole diameter 21.5 mm - torque 5 N.m



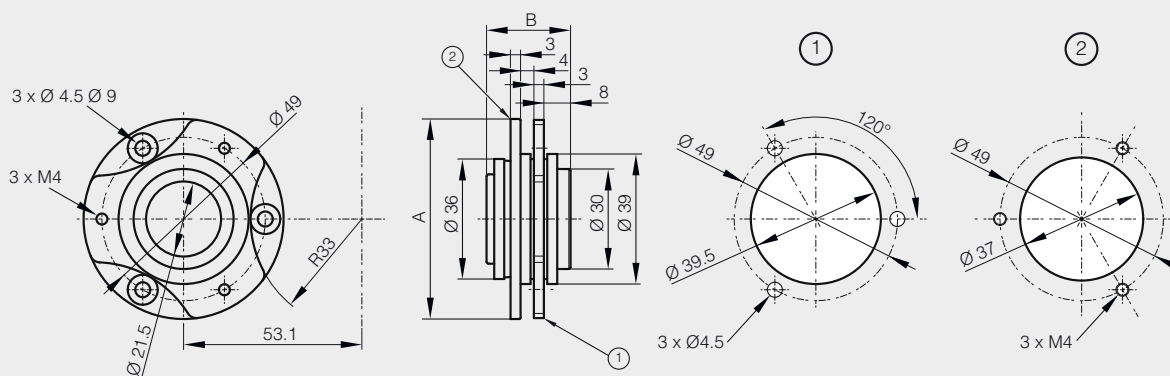
Rotation angle: 360°.

Friction torque: 5 N.m.

Center hole for easy cable management.

For indoor applications (industrial control panels and monitors).

	Part number	Material	Finish	A	B	Torque	Weight (g)
NEW	70-7-3637	430 stainless steel	polished	60	25	5 N.m	174



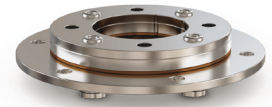
Hinges with dual function

Friction hinges

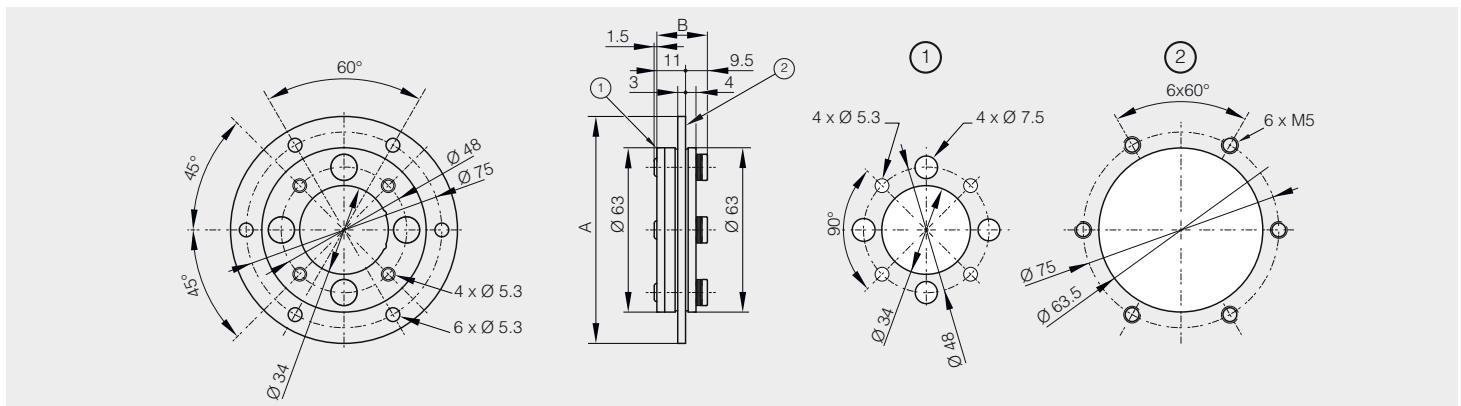
Swivel torque hinge with hole diameter 34 mm - torque 7 N.m



Rotation angle: 360°.
Friction torque: 7 N.m.
Center hole for easy cable management.
For indoor applications (industrial control panels and monitors).



Part number	Material	Finish	A	B	Torque	Weight (g)
NEW 70-7-3638	430 stainless steel	polished	87	20.5	7 N.m	282

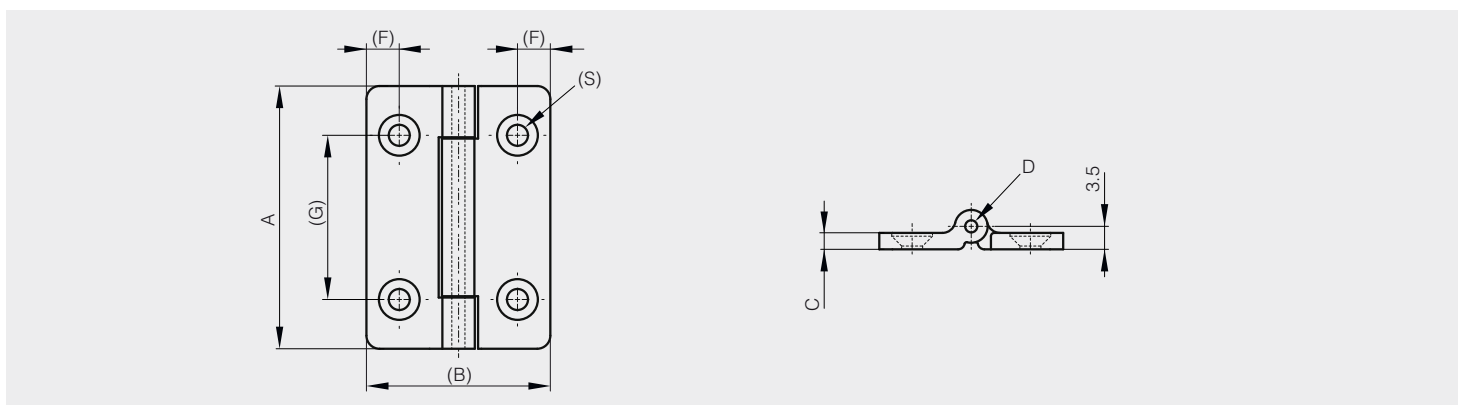


Mini torque hinges - torque 0.25 N.m



Passed 20,000 open/close test.
Pin in 304 stainless steel.

Part number	Material	Finish	A	B	C	D	F	G	S	Torque	Weight (g)
NEW 54-7-3547	POM	black	40	28	2.5	2	5	25	3.2	0.25 N.m	5
NEW 54-7-3548	POM	white	40	28	2.5	2	5	25	3.2	0.25 N.m	5



FIXOR_{SL}

Calle del Dr. Mata num 5, 08203 Sabadell
Tel 93 710 41 60, tecnica@fixor.es
www.fixor.es

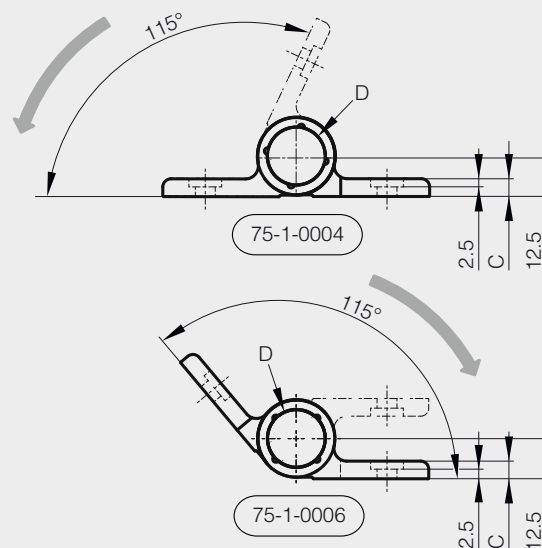
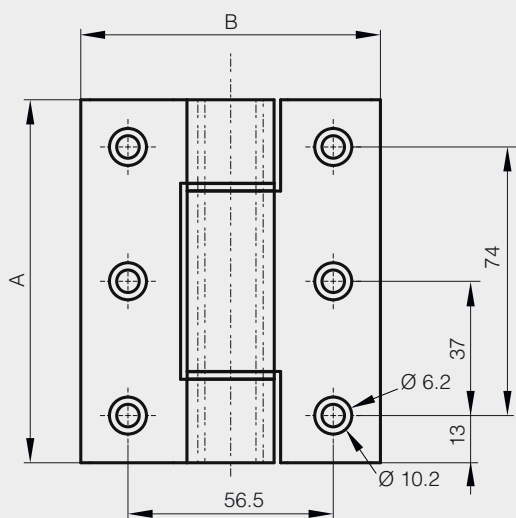
Soft-close dampening hinges in aluminium



- Soft-close dampening hinge: soft-close damper keeps lid from slamming shut when the hinge is put in the open position.
 - Damper working direction: shown by the arrow in the drawing.
 - Operating angle: 115°.
 - If the opening angle is wider than 115° (+/- 5°), mechanism is broken and damper doesn't work any longer.
 - **Provide a door stopper to prevent from overturning beyond the prescribed angle range.**
 - Do not force the door to close faster in damper effective direction. It can cause damage to the product.
 - When the door opening angle is small, the dampers may not work smoothly.
 - Torque moment (for one hinge): 2.5 to 4.5 N.m.
 - Torque calculation:
Torque (N.m) = L (m) x 1/2 x W (kg) x 9.8 with:
 - L = door height in metre.
 - W = door weight in kilo.
 - Operating temperature: 0 to +40°C.
 - Soft close of a door (vertical application): door closing system.
- Put together with a spring hinge with same dimension (72-1-4231 or 72-1-4232), an automatic soft close of a door is possible without any other component.
- Please ask us for more information.



Part number	Material	Finish	A	B	C	D	Torque	Note	Weight (g)
75-1-0004	6082 T5 alu	clear anodised	100	82.5	5.5	18	2.5 - 4.5 N.m	Damper working direction when opening the hinge	242
NEW 75-1-0006	6082 T5 alu	clear anodised	100	82.5	5.5	18	2.5 - 4.5 N.m	Damper working direction when closing the hinge	242



Compression latching hinges



Latching hinge that may be used as hinge or latch according to need.

Allows you to open door as left- or right hinged door, or to remove door completely. Universal left- and right assembly.

Available with a built-in safety catch for safe opening of pressurized doors. In addition to the 3 mm compression that always applies, the latching hinge can easily be adjusted between offset 0 mm, 1.5 mm or 3.0 mm to put more pressure on the gasket and ensure a tight and sealed door.

Door part mounts on a mounting bracket (included) which stabilize the door in the latching hinge area and provide further adjustability.

The latching hinge can be adjusted 3 mm in all three directions. Insert: recessed hexagon 8 mm, with open and close indication for insert position.

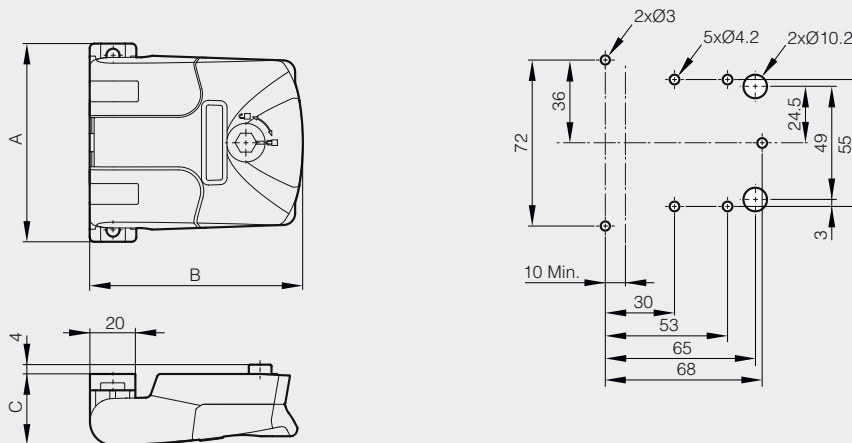


Frame part mounts with screws. Mounting bracket for the door mounts with \varnothing 4 mm blind rivets.

Note that a normal panel will need four units in order to operate as either left-open, right open, or completely removable.

No problems with thermal break as units are surface-mounted on to door and frame parts, resulting in no parts intruding through the double skinned doors.

	Part number	Material	Finish	A	B	C	Note	Weight (g)
NEW	54-7-3549	polyamide	black	85	91	30.5	with built-in safety catch	102
NEW	54-7-3550	polyamide	black	85	91	30.5	without safety catch	96



Hinges with dual function

Latching hinges

Hinge for insulated door

Hinge designed for use on insulated doors in HVAC units.

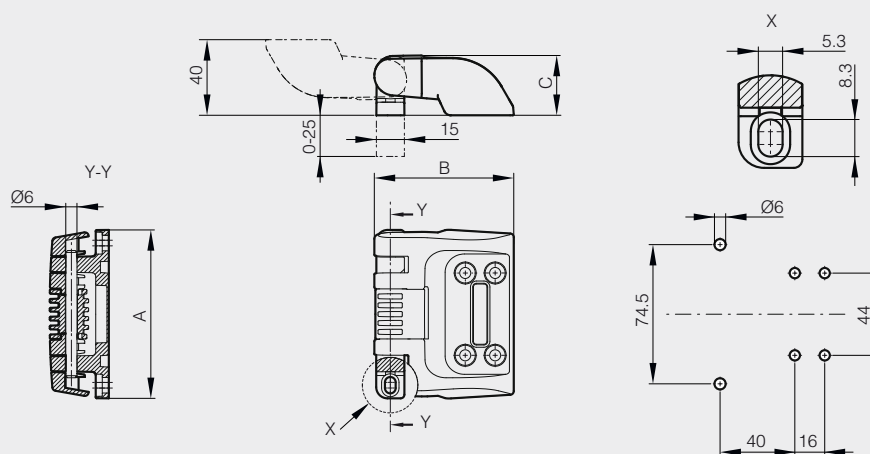
With door in open position, the smart quick-release function allows for complete door removal and door attachment, without the need for any tool.

Universal right and left mounting with 180° opening angle. Surface mounted on frame and door with rivets or screws.

Door side in PA6, frame side in black zamak, pin in 303 stainless steel.



	Part number	Material	Finish	A	B	C	Weight (g)
NEW	54-7-3545	polyamide and zinc die-cast	black	90	74.5	32	139



Forged hinges - 3 knuckles



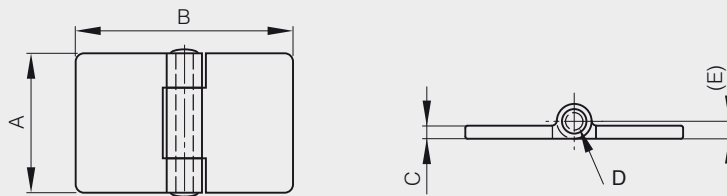
Riveted pin.

Other dimensions or variants are available on request.

Raw steel pin for raw steel hinges.

304 stainless steel pin for 304 stainless steel hinges.

Part number	Material	Finish	A	B	C	D	E	Note	Weight (g)
72-1-3346	steel	raw	32	32	3	4	4	1 MR (railway code)	33
72-1-3348	steel	raw	32	50	3	4	4	3 MR (railway code)	47
72-1-3349	steel	raw	50	50	3	4	4	4 MR (railway code)	75
72-1-3352	steel	raw	50	50	5	6	6	7 MR (railway code)	122
72-1-3351	steel	raw	50	80	3	4	4	6 MR (railway code)	108
72-1-3354	steel	raw	50	80	5	6	6	9 MR (railway code)	182
72-1-3990	304 stainless steel	raw	50	50	3	4	4	4 MR (railway code)	71
NEW 72-1-4186	304 stainless steel	raw	50	80	3	4	4	6 MR (railway code)	112
72-1-4187	304 stainless steel	raw	50	80	5	6	6	9 MR (railway code)	182



Forged hinges with reversed leaves - 3 knuckles



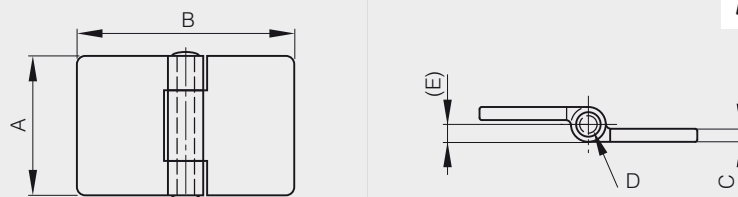
Riveted pin.

Other dimensions or variants are available on request.

Raw steel pin for raw steel hinges.

304 stainless steel pin for 304 stainless steel hinges.

Part number	Material	Finish	A	B	C	D	E	Note	Weight (g)
72-1-3380	steel	raw	32	50	3	4	4	17 MR (railway code)	33
72-1-3381	steel	raw	50	50	3	4	4	20 MR (railway code)	70
72-1-3384	steel	raw	50	50	5	6	6	23 MR (railway code)	122
NEW 72-1-3383	steel	raw	50	80	3	4	4	22 MR (railway code)	104
72-1-3386	steel	raw	50	80	5	6	6	25 MR (railway code)	182
72-1-3992	304 stainless steel	raw	50	50	3	4	4	20 MR (railway code)	71
72-1-3993	304 stainless steel	raw	50	80	3	4	4	22 MR (railway code)	112



FIXOR_{SL}
 Calle del Dr. Mata num 5, 08203 Sabadell
 Tel 93 710 41 60, tecnica@fixor.es
www.fixor.es

Forged hinges - 5 knuckles



Riveted pin : (except part number: 72-1-4288 with a removable pin).

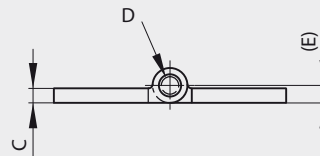
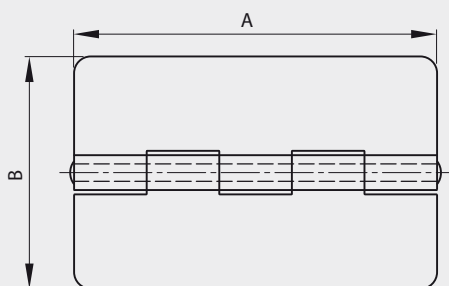
Other dimensions or variants are available on request.

Raw steel pin for raw steel hinges.

304 stainless steel pin for 304 stainless steel hinges.



	Part number	Material	Finish	A	B	C	D	E	Note	Weight (g)
NEW	72-1-4289	steel	raw	60	60	6	6	6		283
	72-1-3410	steel	raw	80	80	5	6	6	1 FR (railway code)	283
	72-1-3414	steel	raw	80	80	8	10	10	14 FR (railway code)	485
	72-1-3412	steel	raw	80	130	5	6	6	3 FR (railway code)	436
	72-1-3416	steel	raw	80	130	8	10	10	16 FR (railway code)	761
	72-1-3413	steel	raw	125	80	5	6	6	11 FR (railway code)	440
	72-1-3417	steel	raw	125	130	8	10	10	24 FR (railway code)	1240
NEW	72-1-4290	304 stainless steel	raw	60	60	6	6	6		283
	72-1-3991	304 stainless steel	raw	80	80	5	6	6	1 FR (railway code)	283
NEW	72-1-4279	304 stainless steel	raw	80	130	5	6	6	3 FR (railway code)	436
NEW	72-1-4288	304 stainless steel	raw	80	130	5	6	6	Removable pin	436



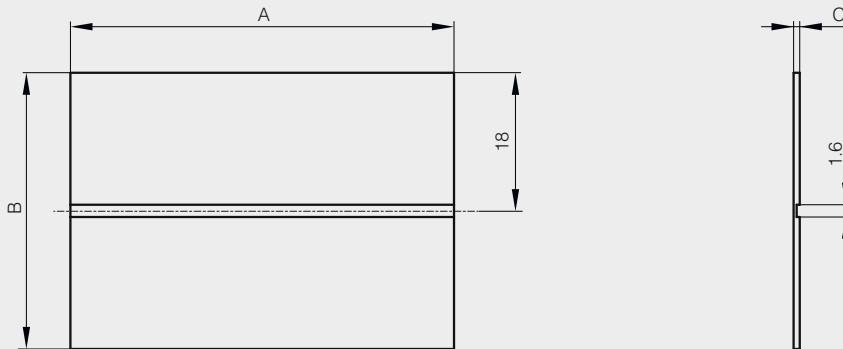
Carbon Kevlar hinges - 36 mm width



Hinge is constructed of rigid leaves and a flex unit.
 The rigid leaves are woven carbon fibre in an epoxy matrix.
 The Kevlar flex units are impregnated with a flexible urethane.
 Design for bonding.
 No metallic component. Ultra light, ultra thin.



	Part number	Material	Finish	A	B	C	Weight (g)
NEW	54-7-3600	carbon / Kevlar	black	50	36	0.8	2
NEW	54-7-3601	carbon / Kevlar	black	100	36	0.8	3



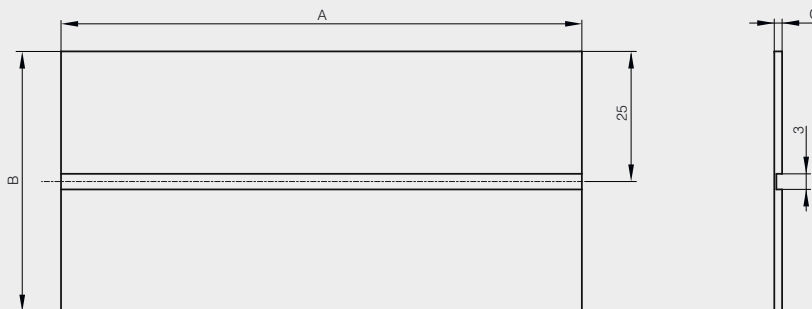
Carbon Kevlar hinges - 50 mm width



Hinge is constructed of rigid leaves and a flex unit.
 The rigid leaves are woven carbon fibre in an epoxy matrix.
 The Kevlar flex units are impregnated with a flexible urethane.
 Design for bond or screws assembly.
 Part number 54-7-3602 tested to over one million cycles through an 80° arc.
 No metallic component. Ultra light, ultra thin.



	Part number	Material	Finish	A	B	C	Weight (g)
NEW	54-7-3602	carbon / Kevlar	black	50	50	1.5	4
NEW	54-7-3603	carbon / Kevlar	black	100	50	1.5	9
NEW	54-7-3604	carbon / Kevlar	black	600	50	1.5	51



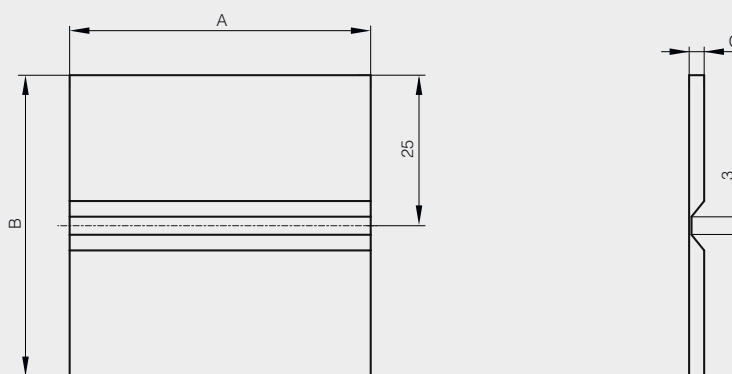
Carbon Kevlar hinges with glass fiber - 50 mm width



Hinge is constructed of rigid leaves and a flex unit.
 The rigid leaves are a glass fibre carbon hybrid.
 The Kevlar flex units are impregnated with a flexible urethane.
 Design for bond or screws assembly.
 No metallic component. Ultra light, ultra thin.



	Part number	Material	Finish	A	B	C	Weight (g)
NEW	54-7-3605	carbon / glass fibre / Kevlar	black	50	50	2.5	8
NEW	54-7-3606	carbon / glass fibre / Kevlar	black	100	50	2.5	16

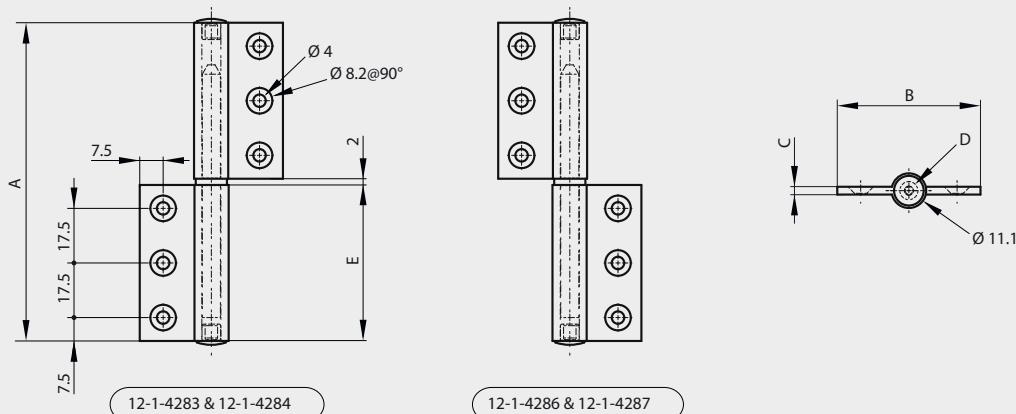


Lift-off hinges in aluminium profile with a stainless steel pin



Stainless steel pin.
Supplied with polymer caps.

Part number	Material	Finish	A	B	C	D	E	Note	Weight (g)
NEW 12-1-4283	6060 T5 alu	clear anodised	102	45.9	2.5	6.1	50	type 1	50
NEW 12-1-4286	6060 T5 alu	clear anodised	102	45.9	2.5	6.1	50	type 2	50
NEW 12-1-4284	6060 T5 alu	black anodised	102	45.9	2.5	6.1	50	type 1	50
NEW 12-1-4287	6060 T5 alu	black anodised	102	45.9	2.5	6.1	50	type 2	50

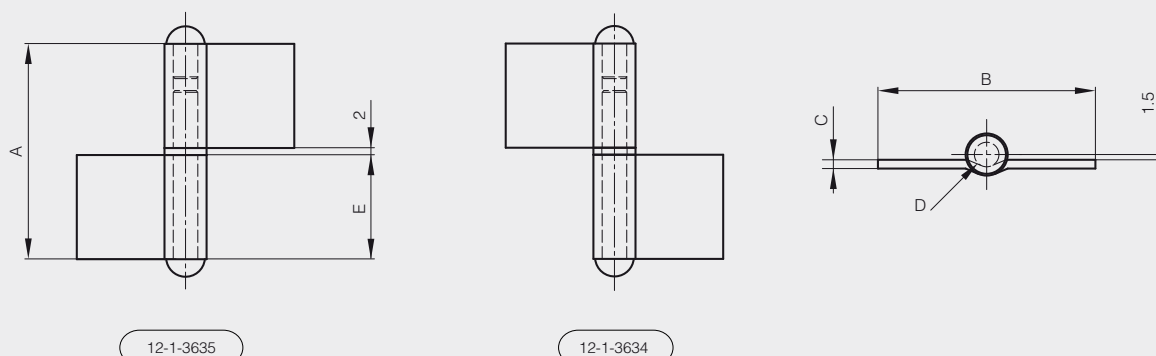


Flag hinge with washer - 62 x 62 mm



Flag hinge with brass washer.

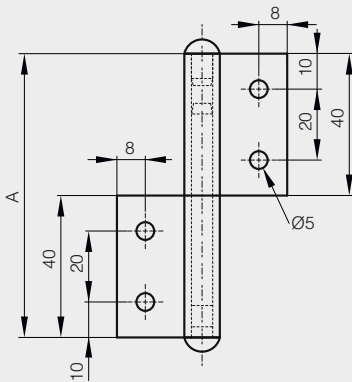
Part number	Material	Finish	A	B	C	D	E	Note	Weight (g)
12-1-3634	steel	raw	62	62	2.5	7	30	type 2	87
12-1-3635	steel	raw	62	62	2.5	7	30	type 1	87



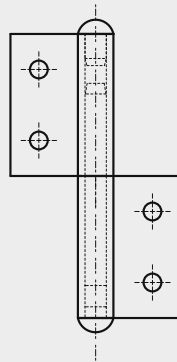
Flag hinge without washer - drilled - flat knuckle



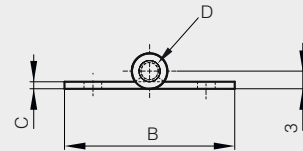
Part number	Material	Finish	A	B	C	D	Note	Weight (g)
NEW 12-1-4258	304 stainless steel	raw	80	48	2	6	type 1	76
NEW 12-1-4285	304 stainless steel	raw	80	48	2	6	type 2	76



12-1-4258



12-1-4285

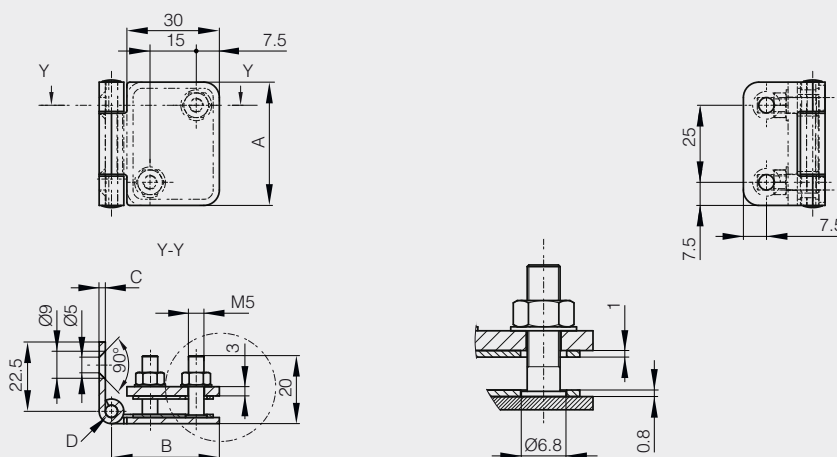


Glass door hinge in brushed stainless steel



Supplied with EPDM gasket.
Included stainless steel bolts and stainless steel washers.

	Part number	Material	Finish	A	B	C	D	Weight (g)
NEW	52-1-4040	304 stainless steel	brushed	40	35	2	4	80



Glass door hinge in stainless steel



Hinge for glass / acrylic doors (PMMA).

Door thickness: 4 - 6 mm.

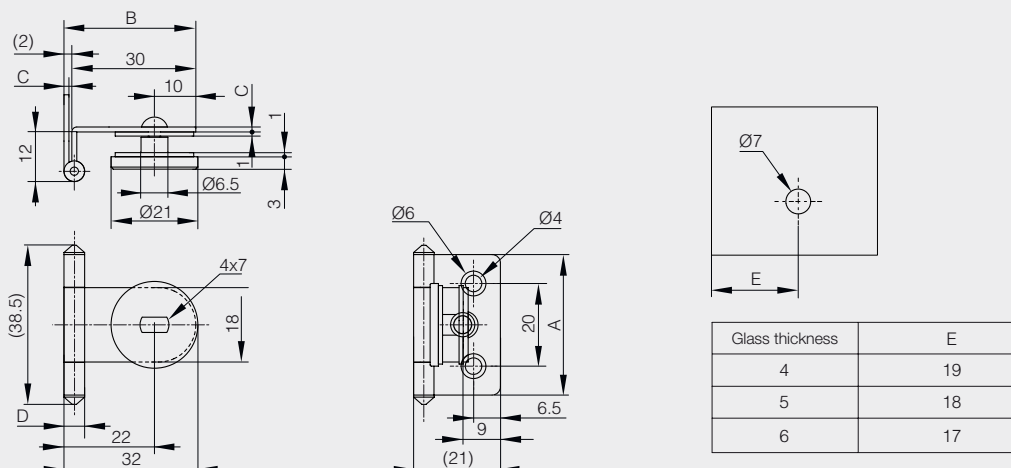
Door weight: max. 4 kg / pair.

Leaves, pin and screw in 304 stainless steel. Plate in aluminium alloy, washer in chloroethylene.

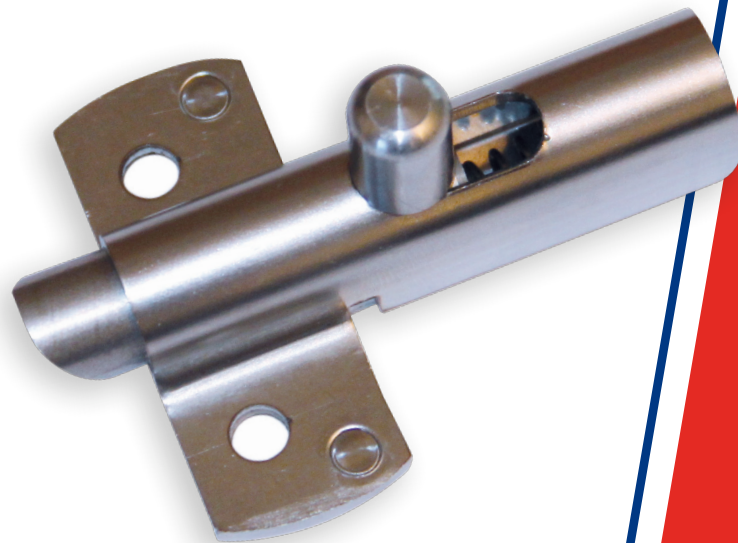
Part number	Material	Finish	A	B	C	D	Weight (g)
72-7-4254	304 stainless steel	raw	34	32	1.2	5	15



FIXOR^{SL}
Calle del Dr. Mata num 5, 08203 Sabadell
Tel 93 710 41 60, tecnica@fixor.es
www.fixor.es



LATCHING SYSTEMS





Slam latches

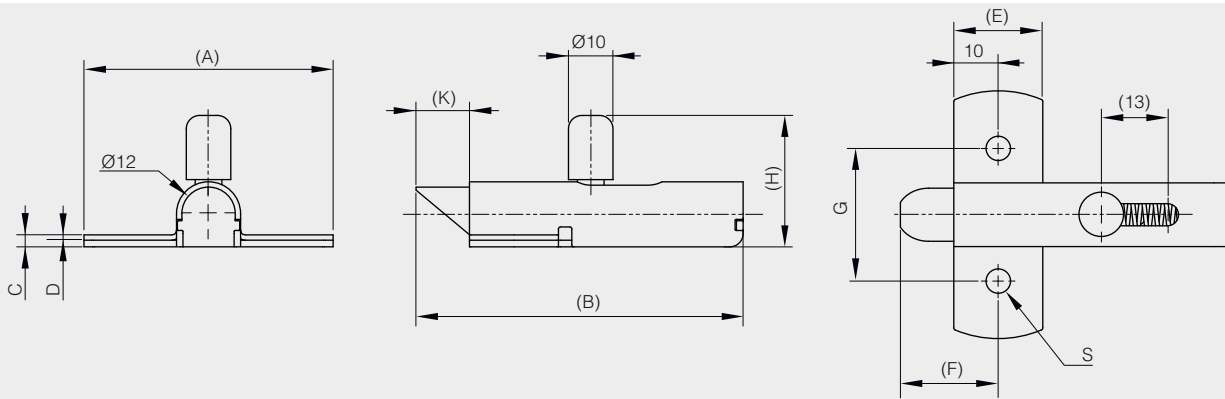
Small slam latches

Slam latch in stainless steel - bolt "nose-up"

Stainless steel slam latch.



Part number	Material	Finish	A	B	C	D	E	F	G	H	K	S	Weight (g)
NEW 16-1-4265	304 stainless steel	raw	56	73.5	2.7	1.2	20	22	30	29.7	12	5.5	87

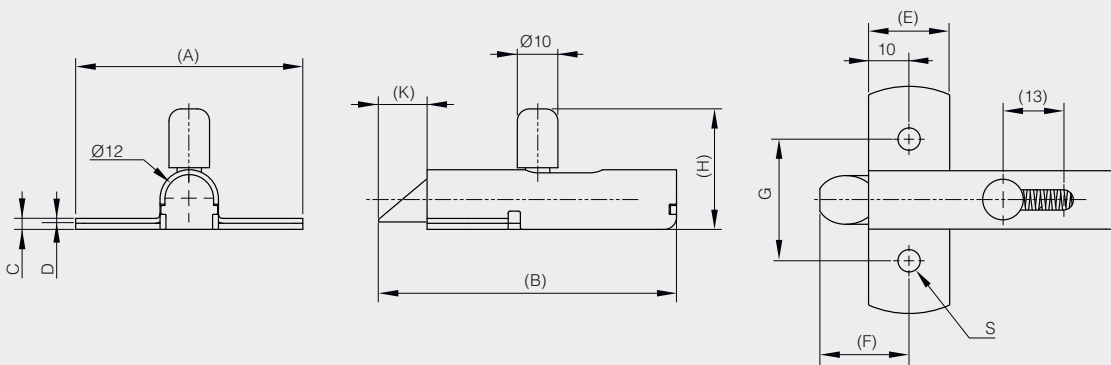


Slam latch in stainless steel - bolt "nose-down"

Stainless steel slam latch.



Part number	Material	Finish	A	B	C	D	E	F	G	H	K	S	Weight (g)
NEW 16-1-4282	304 stainless steel	raw	56	73.5	2.7	1.2	20	22	30	29.7	12	5.5	87



FIXORSL

Calle del Dr. Mata num 5, 08203 Sabadell
Tel 93 710 41 60, tecnica@fixor.es
www.fixor.es



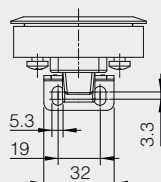
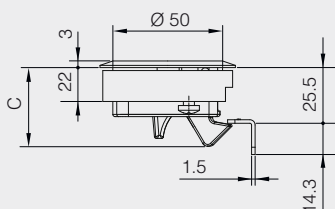
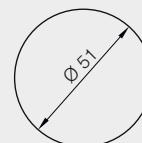
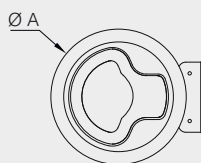
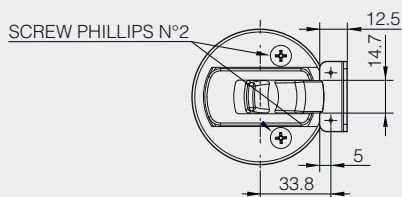
Small slam latches

Low-profile slam latch

Material: UL94-HB ABS.



	Part number	Material	Finish	A	C	Weight (g)
NEW	16-7-4273	polymer	black	61	35.5	58
NEW	16-7-4274	polymer	white	61	35.5	58



Lockable low-profile slam latch

Material: UL94-HB ABS.

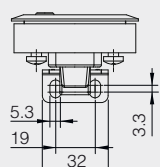
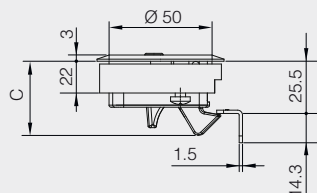
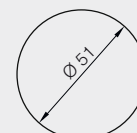
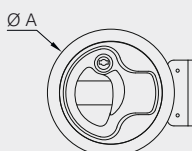
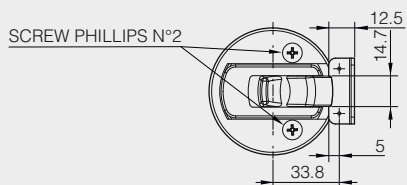


	Part number	Material	Finish	A	C	Weight (g)
NEW	16-7-4275	polymer	black	61	35.5	58



FIXOR^{SL}

Calle del Dr. Mata num 5, 08203 Sabadell
Tel 93 710 41 60, tecnica@fixores.com
www.fixores.com





Spring loaded latches

Spring-loaded latches - stop in opening position

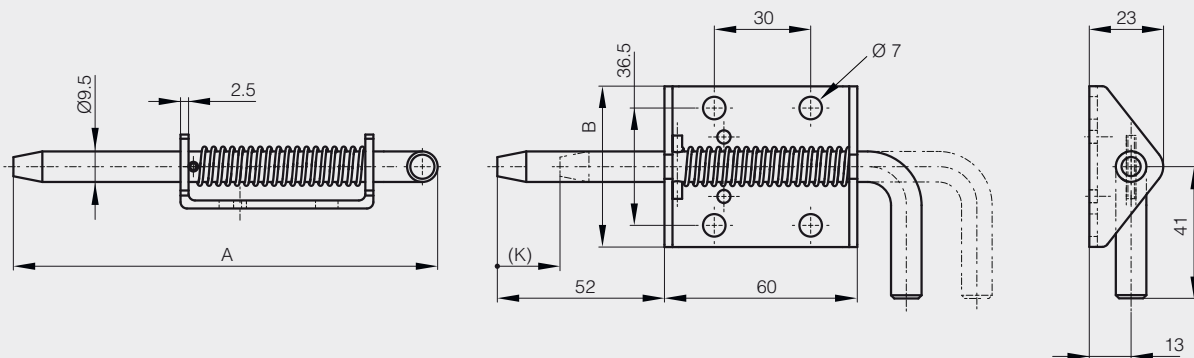
Springloaded bolt

Heavy duty range. No stop when open.



STEEL RoHS

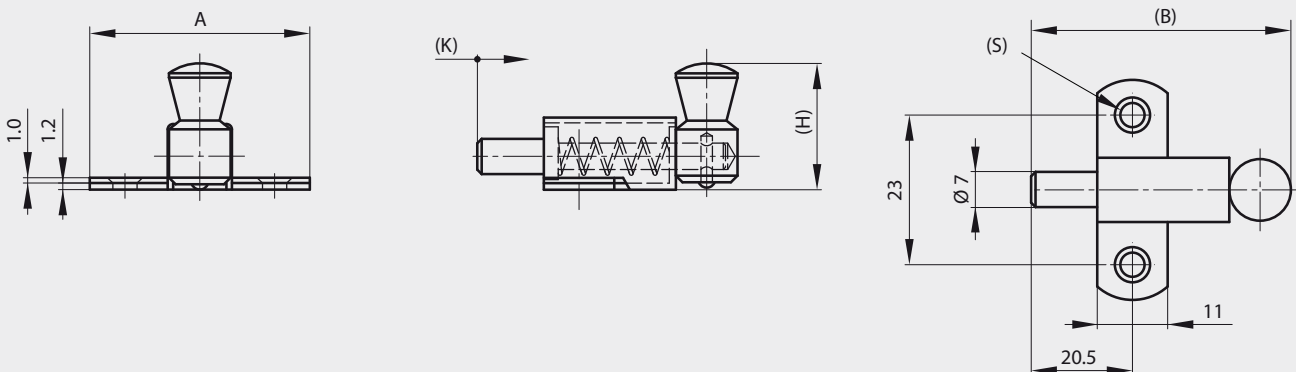
Part number	Material	Finish	A	B	K	Note	Weight (g)
NEW 16-1-9026	steel	zinc plated	132	50	17	no stop	175



Springloaded latch with round bolt

STEEL RoHS

Part number	Material	Finish	A	B	H	K	S	Weight (g)
16-1-3647	steel	zinc plated	35	43.5	19	10	3.5	21



FIXOR^{SL}

Calle del Dr. Mata num 5, 08203 Sabadell
Tel 93 710 41 60, tecnica@fixores.com
www.fixores.com



Spring loaded latches

Spring-loaded latches - stop in opening position

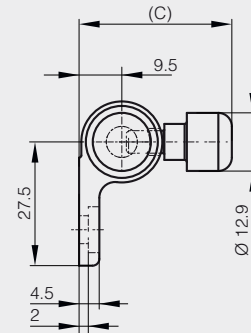
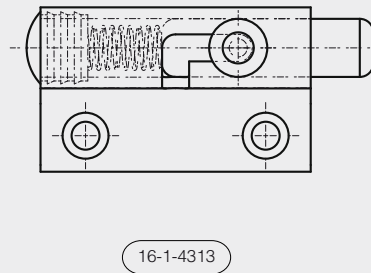
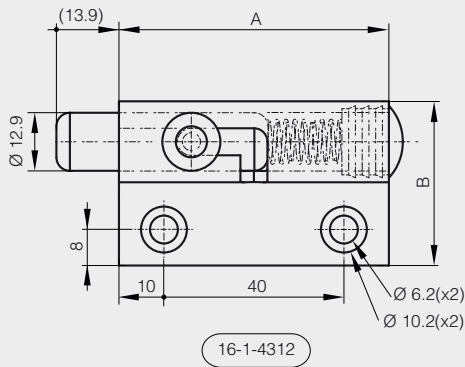
Springloaded bolt with locking system in aluminium



Stop when open.
 Body: clear anodised aluminium.
 Shaft and handle: raw aluminium.
 Cap: PE, black.
 Spring: stainless steel.



	Part number	Material	Finish	A	B	C	Note	Weight (g)
NEW	16-1-4312	6060 T5 alu	clear anodised	60	37	33.5	type 2	58
NEW	16-1-4313	6060 T5 alu	clear anodised	60	37	33.5	type 1	58

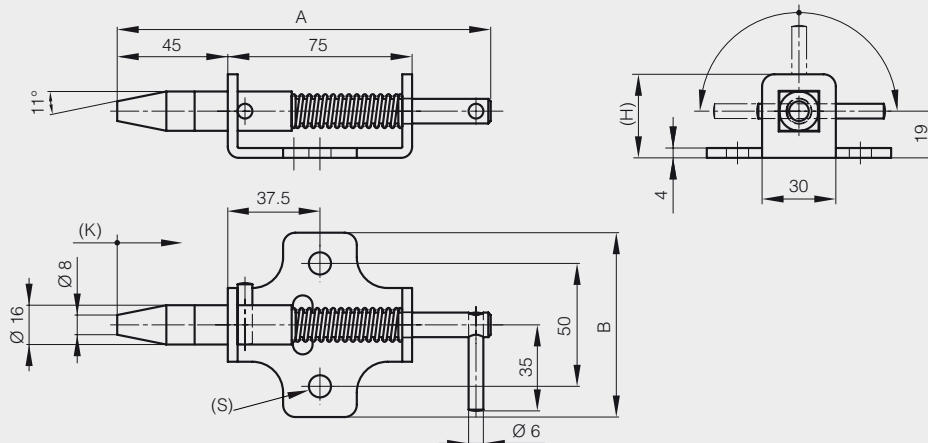
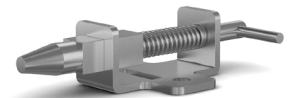


Springloaded bolt with locking system A



Heavy duty range. Stop when open.

Part number	Material	Finish	A	B	H	K	S	Weight (g)
16-1-4034	steel	zinc plated	152	75	34	20	9	340





Spring loaded latches

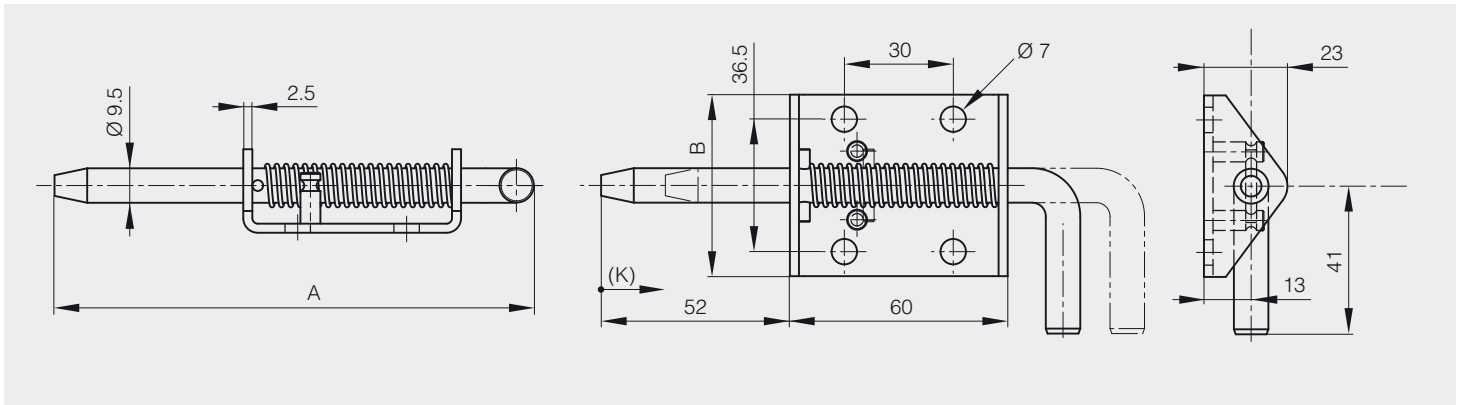
Spring-loaded latches - stop in opening position

Springloaded bolt with locking system B



Heavy duty range. Stop when open.

Part number	Material	Finish	A	B	K	Weight (g)
16-1-9007	steel	zinc plated	132	50	17	175
NEW 16-1-9025	304 stainless steel	raw	132	50	17	170

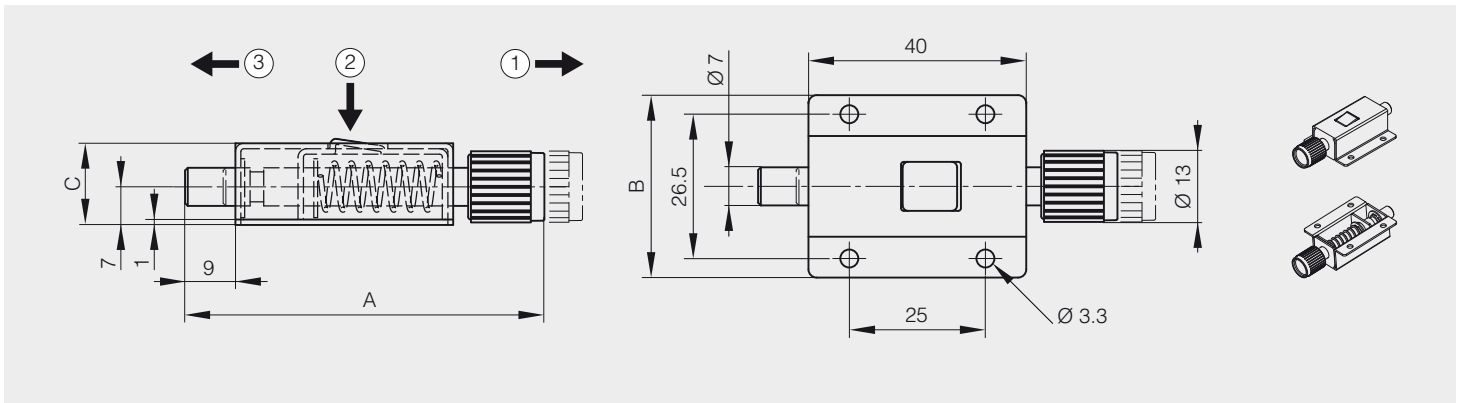


Push barrel bolt



Stainless steel latch with steel shaft and plastic button.

Part number	Material	Finish	A	B	C	Weight (g)
16-1-9008	stainless steel	raw	64	33.5	15	44



FIXOR_{SL}

Calle del Dr. Mata num 5, 08203 Sabadell
Tel 93 710 41 60, tecnica@fixor.es
www.fixor.es



Vector 2 T-handle with mounting bracket - chrome plated with fixed cam



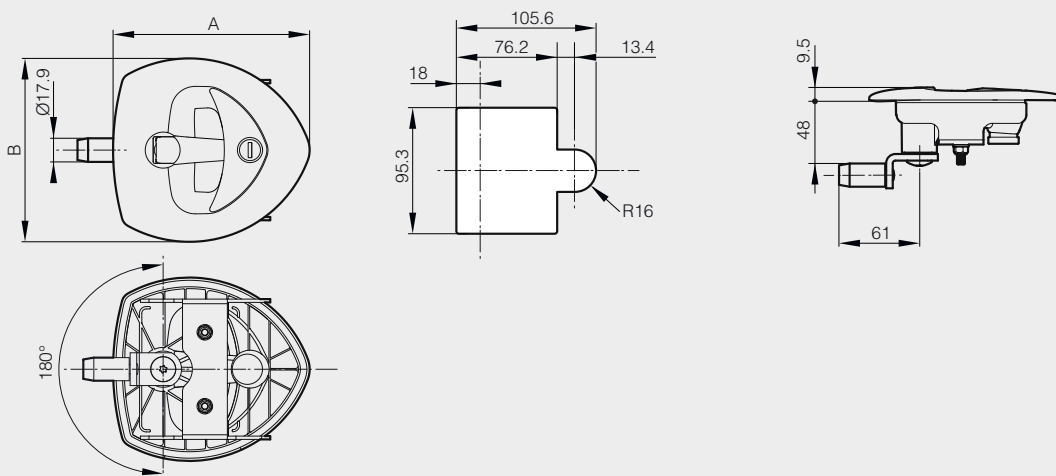
The mounting bracket provides a quick, easy and reliable blind mounting.
 Flush T-handle with a 4 mm compression stroke.
 Handle rotation 90° right, 90° left.
 Equipped with integrated PUR-gasket, protection degree IP65.
 Comes with a keyed alike locking-cylinder with folding stainless steel dust shutter.

Material : body: PA / T-shaped handle: zinc die cast, black / Cam: steel, zinc plated / Mounting bracket: steel, zinc plated / Cast-in bolt : steel, zinc plated.



Other key numbers and cams are available on request.

Part number	Material	Finish	A	B	Note	Weight (g)
NEW 16-7-4310	polyamide and zinc die-cast	chrome plated	149	139	1 point cam (H48)	570



Vector 2 T-handle with mounting bracket - black version with adjustable cam

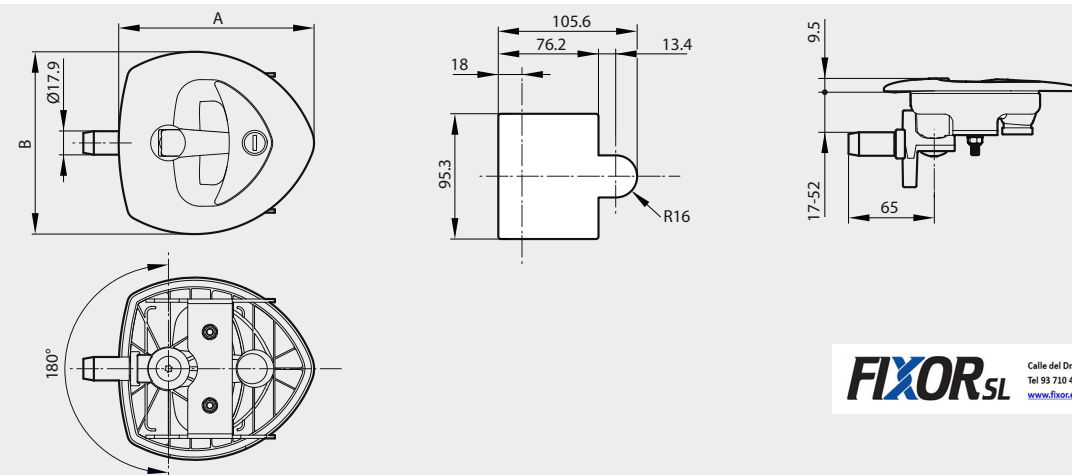


The mounting bracket provides a quick, easy and reliable blind mounting.
 Flush T-handle with a 4 mm compression stroke.
 Handle rotation 90° right, 90° left.
 Equipped with integrated PUR-gasket, protection degree IP65.
 Comes with a keyed alike locking-cylinder with folding stainless steel dust shutter.
 Material : body and roller cam: PA / T-shaped handle: zinc die cast, black / Adjustable cam: zinc die cast, passivated / Mounting bracket: steel, zinc plated / Cast-in bolt : steel, zinc plated.



Other key numbers and cams are available on request.

Part number	Material	Finish	A	B	Note	Weight (g)
NEW 16-7-4291	polyamide and zinc die-cast	black	149	139	adjustable 1 point cam (H17-52)	620



FIXOR^{sl}
 Calle del Dr. Mata num 5, 08203 Sabadell
 Tel 93 710 41 60, tecnica@fixor.es
www.fixor.es



Barrel bolts

Barrel bolt in aluminium

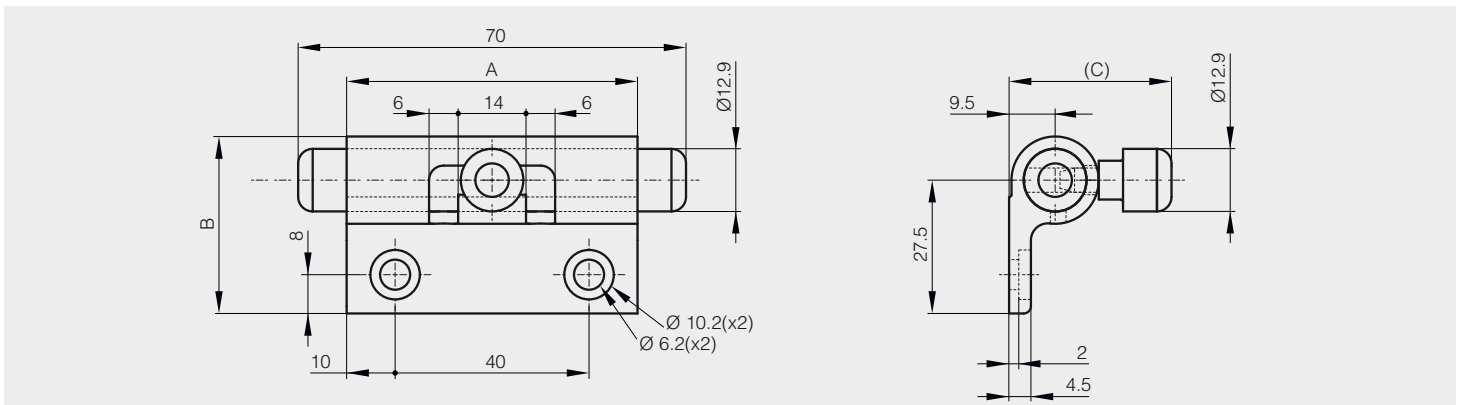


ALU

Body: clear anodised aluminium.
Shaft and handle: raw aluminium.
No strike.
Shaft length when closed: 15 mm.



Part number	Material	Finish	A	B	C	Weight (g)
NEW 16-1-4311	6060 T5 alu	clear anodised	60	36.5	34	65

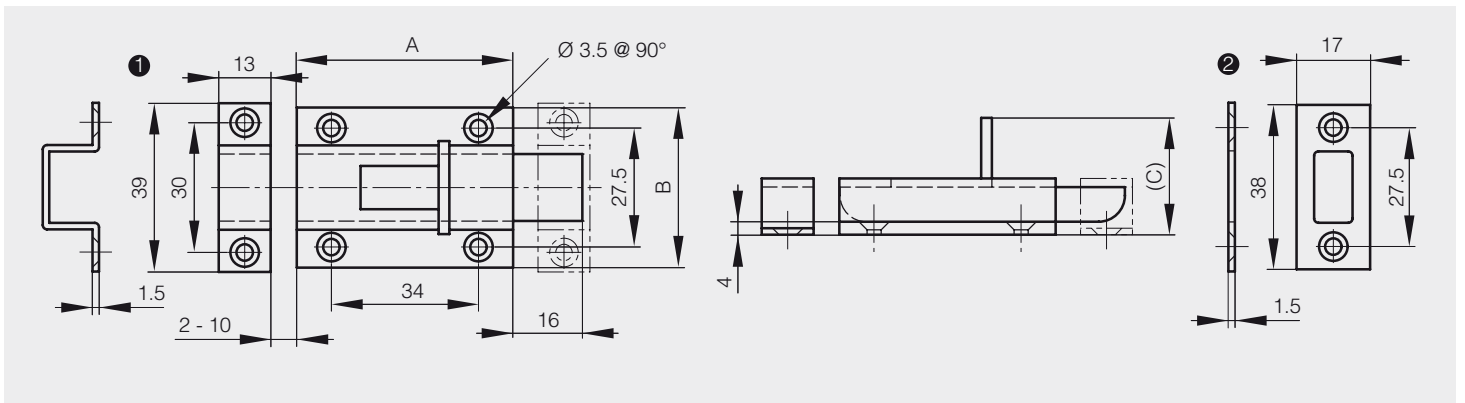
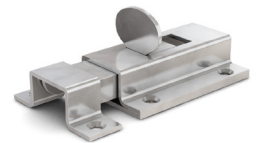


Barrel bolt in stainless steel

STAINLESS STEEL

Can be fixed in vertical or horizontal position (stop when locked).
Supplied with 2 different strikes (see drawing).

Part number	Material	Finish	A	B	C	Weight (g)
16-7-3863	304 stainless steel	satin	50	37	27	80



FIXOR^{SL} Calle del Dr. Mata num 5, 08203 Sabadell
Tel 93 710 41 60, tecnica@fixores.com
www.fixores.com



Ball catches

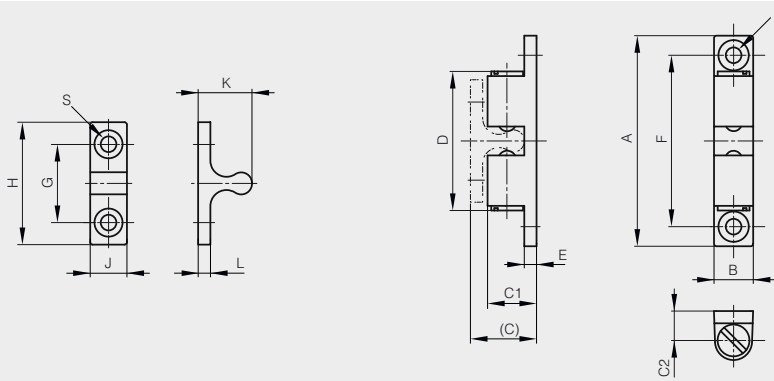
Stainless steel dual ball catches



Can be installed vertically or horizontally.
Catch force is not adjustable. Do not turn the slot part.



Part number	Material	Finish	A	B	C	C1	C2	D	E	F	G	H	J	K	L	S	Force	Weight (g)
NEW 16-7-4305	316 stainless steel	polished	43	8	13.5	10	6	28.4	2.5	35	16	25	7.5	11	2.5	3.2	1.3kg	18
NEW 16-7-4306	316 stainless steel	polished	50	10	16.1	12.2	7.7	31.5	2.9	40	20	30	9	13.2	2.9	4.2	1.8kg	30
NEW 16-7-4307	316 stainless steel	polished	70	13	23	17	10.5	51	4	60	30	42	10.5	19	4	4.2	3.9kg	83



Zinc die-cast dual ball catches

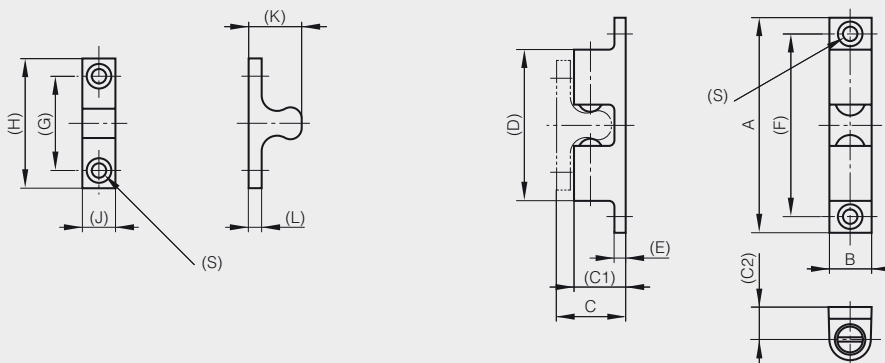
Body: zinc die-cast, chrome plated.
Balls: steel.



FIXOR^{SL}
Calle del Dr. Mata num 5, 08203 Sabadell
Tel 93 710 41 60, tecnic@fixor.es
www.fixor.es



Part number	Material	Finish	A	B	C	C1	C2	D	E	F	G	H	J	K	L	S	Force	Weight (g)
16-7-4211	zinc die-cast	chrome plated	42.5	8	14	10	6.5	26.7	2.5	35	16	25	7.5	11.3	2.5	3.2	3kg	16
16-7-4212	zinc die-cast	chrome plated	50	10	16	12.5	7.4	29.8	3	40	20	30	9	12.3	2.5	4.2	3.3kg	26
16-7-4213	zinc die-cast	chrome plated	70	13.5	21.2	17	11	49	4	60	30	42	10.5	17.2	3	4.2	3.5kg	70





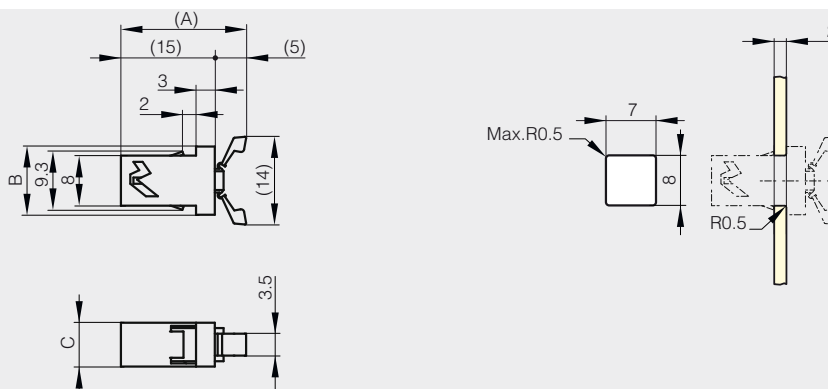
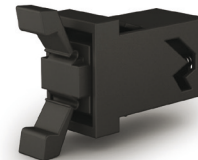
Touch latches

Mini touch latch - snap-in installation



Miniature design is ideal for small applications.
 Snap-in style catch. For sheet metal thickness 2 mm.
 Strike sold separately.

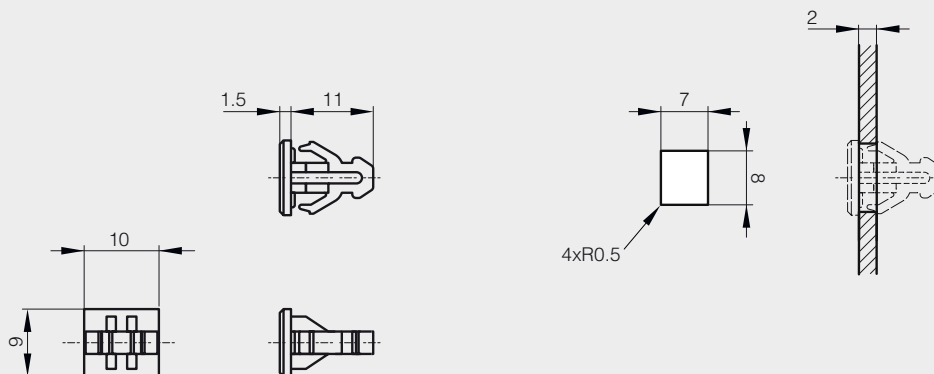
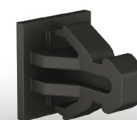
	Part number	Material	Finish	A	B	C	Force	Weight (g)
NEW	16-7-4302	POM/PA	black	20	10.9	7	1.2kg	0.7



Snap-in counter plate for part number 16-7-4302



	Part number	Material	Finish	Weight (g)
NEW	16-7-4304	POM	black	0.5



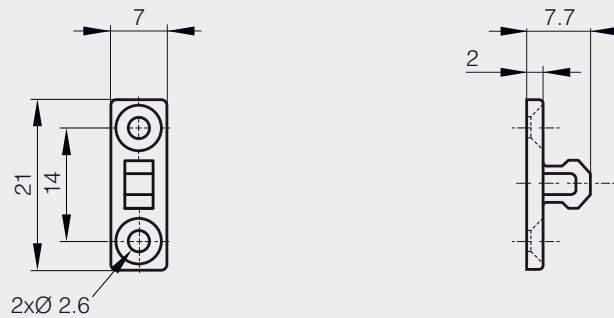


Touch latches

Screw mount counter plate for part number 16-7-4302



	Part number	Material	Finish	Weight (g)
NEW	16-7-4303	POM	black	0.4

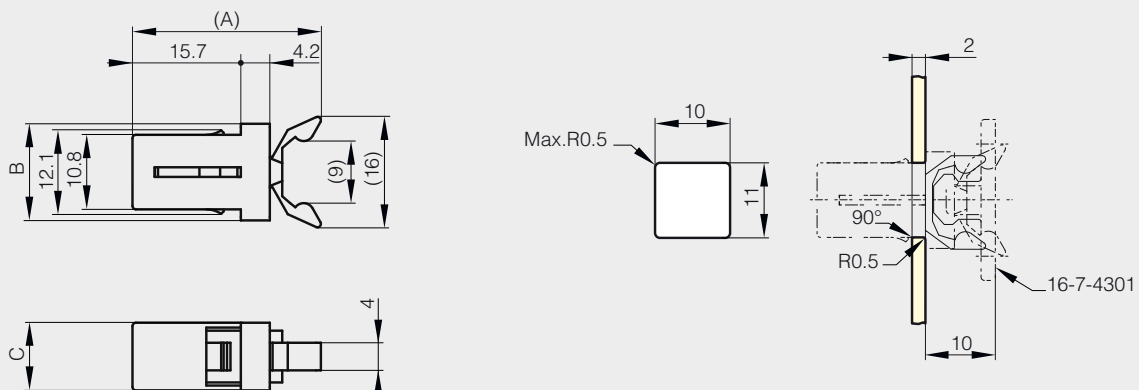
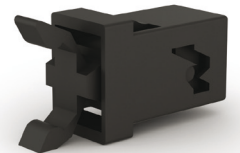


Touch latch - Snap-in installation



Compact design with strong retaining force (3.5 kg).
 Snap-in style catch. For sheet metal thickness 2 mm.
 Strike sold separately.
 Polymer material: PBT, PA and PCL.

	Part number	Material	Finish	A	B	C	Force	Weight (g)
NEW	16-7-4300	polymer	black	27.3	14	9.8	3.5kg	2.3





Touch latch - Screw mounting - Strong retaining force



Passed 100,000 open/close cycle test.

Strong retaining force: 8 kg.

Floating counter plate for easy alignment.

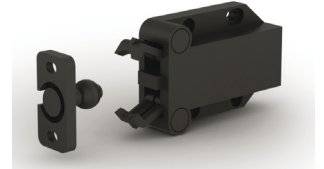
For overlay door, allow 3 mm gap between door and cabinet frame for push space.

Pulling the door with excessive force without unlatching the unit may damage the mechanism.

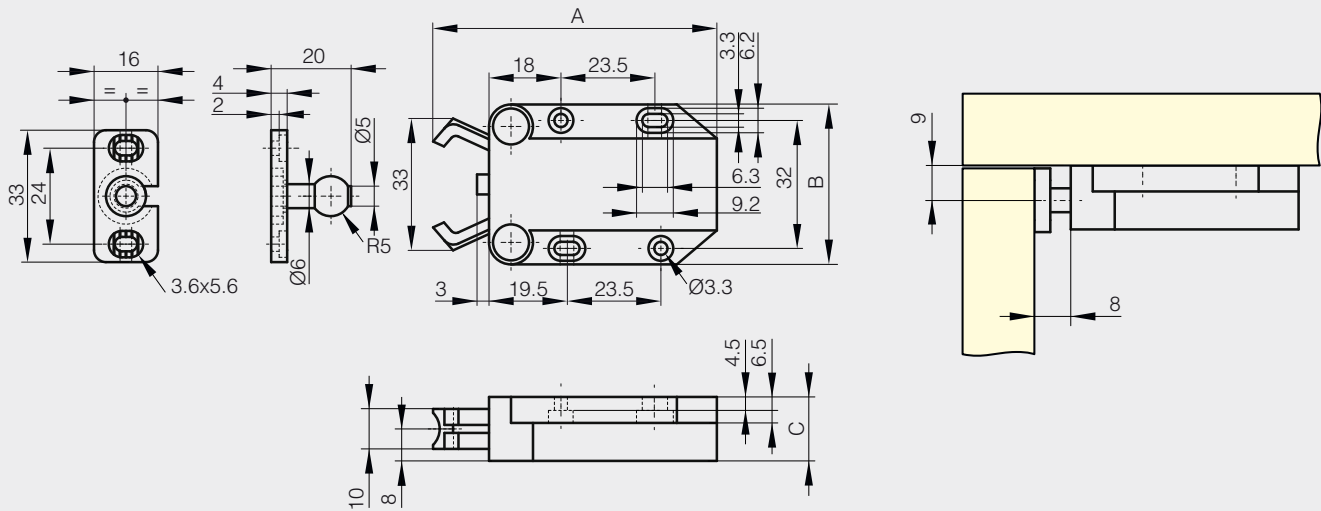
Latch: ABS/POM.

Counter plate: PA.

Comes with screws.



	Part number	Material	Finish	A	B	C	Force	Weight (g)
NEW	16-7-4298	polymer	black	71	40	16	8kg	24





Compact magnetic catches

Ultra thin compact magnetic catch

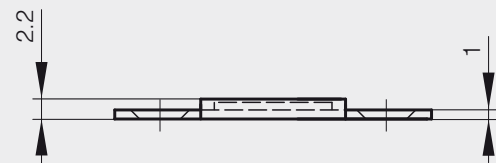
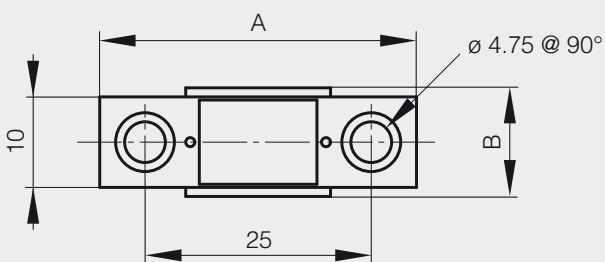
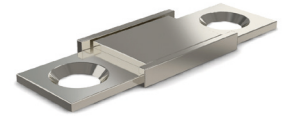
Suitable for temperatures below 80°C.

To avoid breakage, counterplate should not connect with magnet.

Screw heads should not protrude above the base plate.

STEEL

Part number	Material	Finish	A	B	Force	Weight (g)
16-7-4033	steel	nickel plated	35	12	2.7kg	4



Compact magnetic catch



Suitable for temperatures below 80°C.

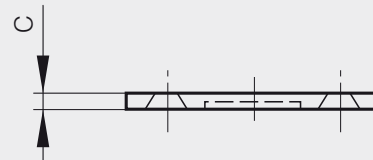
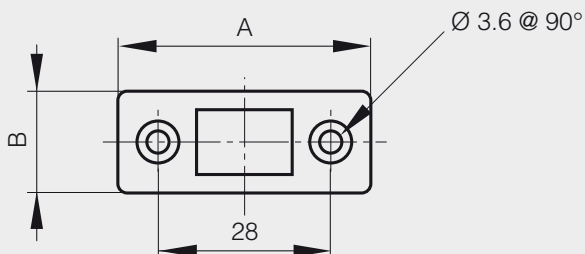
To avoid breakage, counterplate should not connect with magnet.

Screw heads should not protrude above the base plate.

For the stainless steel version, magnet is coated with acrylic resin to be corrosion resistant.

STAINLESS STEEL STEEL

Part number	Material	Finish	A	B	C	Force	Weight (g)
16-7-4207	steel	nickel plated	41	16.5	2.6	4kg	12
NEW 16-7-4308	steel	nickel plated	41	16.5	3.0	8kg	14
NEW 16-7-4309	430 stainless steel	polished	41	16.5	2.8	5kg	13





Magnetic catches

Screw-on magnetic catches

Mini screw-on magnetic catch with counter plate - force 3 kg



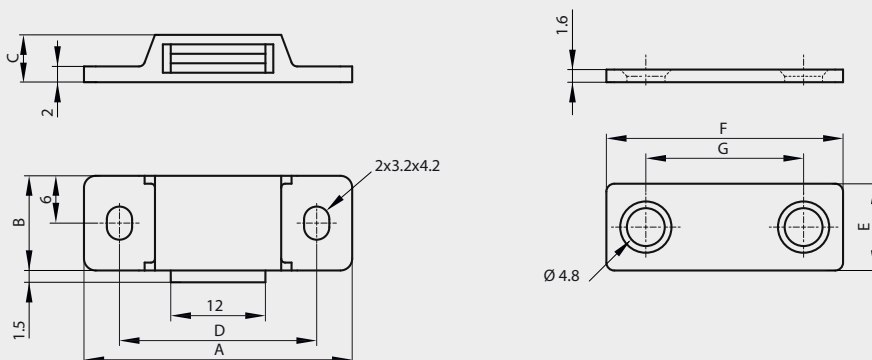
Mini magnetic catch is ideal for tight spaces.

Polymer materials: PBT, steel, neodymium.

Counter plate: steel.

Comes with 4 screws.

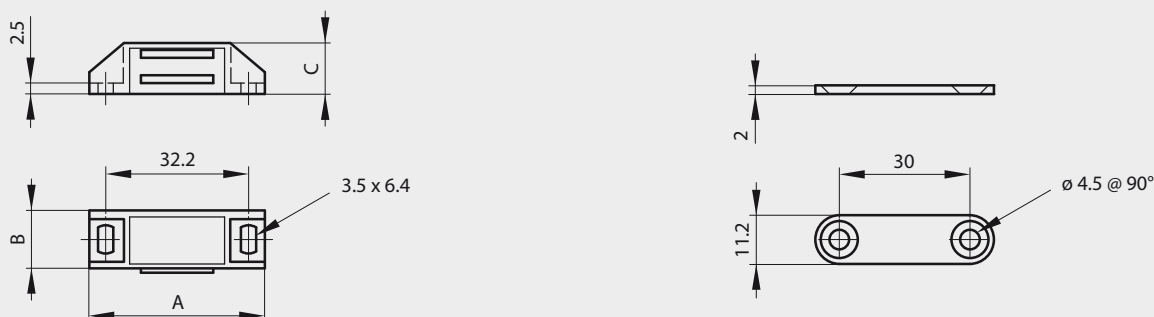
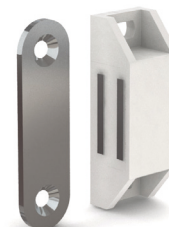
Part number	Material	Finish	A	B	C	D	E	F	G	Force	Weight (g)
NEW 16-7-4293	polymer	white	34	12	6	25	11	30	20	3kg	13



Screw-on magnetic catch with counterplate - force 3 kg



Part number	Material	Finish	A	B	C	Force	Weight (g)
16-7-3492	polymer	white	39.8	13.7	11.7	2 to 3kg	16.5



FIXOR^{SL}

Calle del Dr. Mata num 5, 08203 Sabadell
Tel 93 710 41 60, tecnic@fixor.es
www.fixor.es

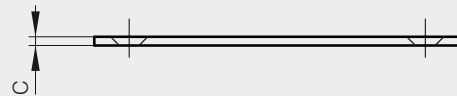
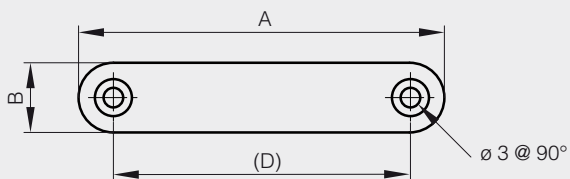


Screw-on magnetic catches

Counter plate for magnetic catch 16-7-3672

STEEL

Part number	Material	Finish	A	B	C	D	Weight (g)
16-7-3673	steel	zinc plated	66	12	2	54	11



Screw-on magnetic catch with counter plate - force 7 kg



BRASS

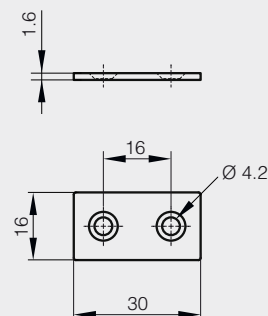
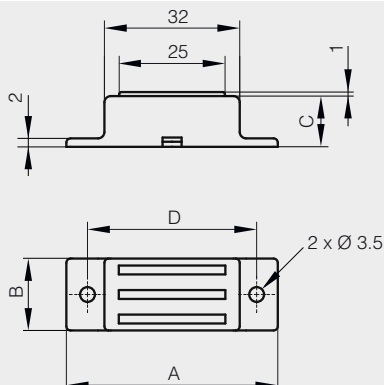
Supplied with counter plate.

Material:

Catch: brass / steel / ferrite / aluminium alloy.

Counter plate: nickel plated steel.

Part number	Material	Finish	A	B	C	D	Force	Weight (g)
NEW 16-7-4296	brass	nickel plated	50	17	12	40	7kg	32





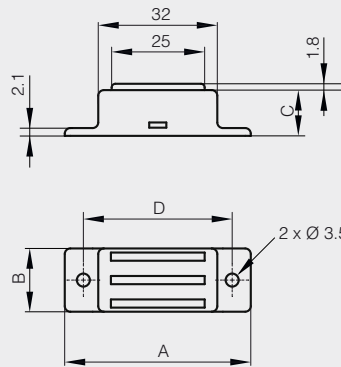
Screw-on magnetic catches

Screw-on magnetic catch without counter plate - force 14 kg



Strong magnetic force.
 Material: 304 stainless steel / steel / neodymium.
 Counter plate not included.

Part number	Material	Finish	A	B	C	D	Force	Weight (g)
NEW 16-7-4297	304 stainless steel	polished	50	17	12.3	40	14kg	41

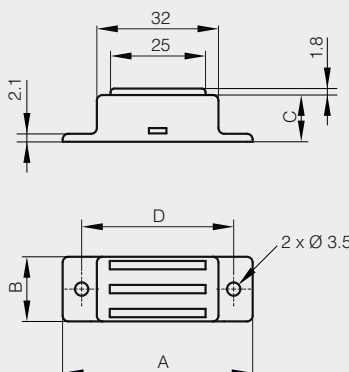


Screw-on magnetic catch without counter plate - force 7 and 14 kg - high temperature resistance



Suitable for high temperature environments up to 250°C.
 Strong magnetic force. Corrosion free.
 Counter plate not included.

Part number	Material	Finish	A	B	C	D	Force	Weight (g)
NEW 16-7-4294	304 stainless steel	polished	50	17	12.3	40	7.1Kg	40
NEW 16-7-4295	304 stainless steel	polished	50	17	12.3	40	14.3Kg	40





Self-adhesive magnetic profile



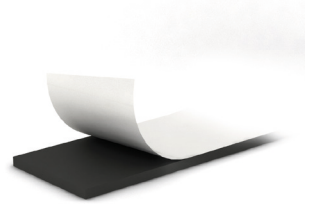
Sold in 30 meter rolls.

The weight indicated in grams in the table is for 1 meter.

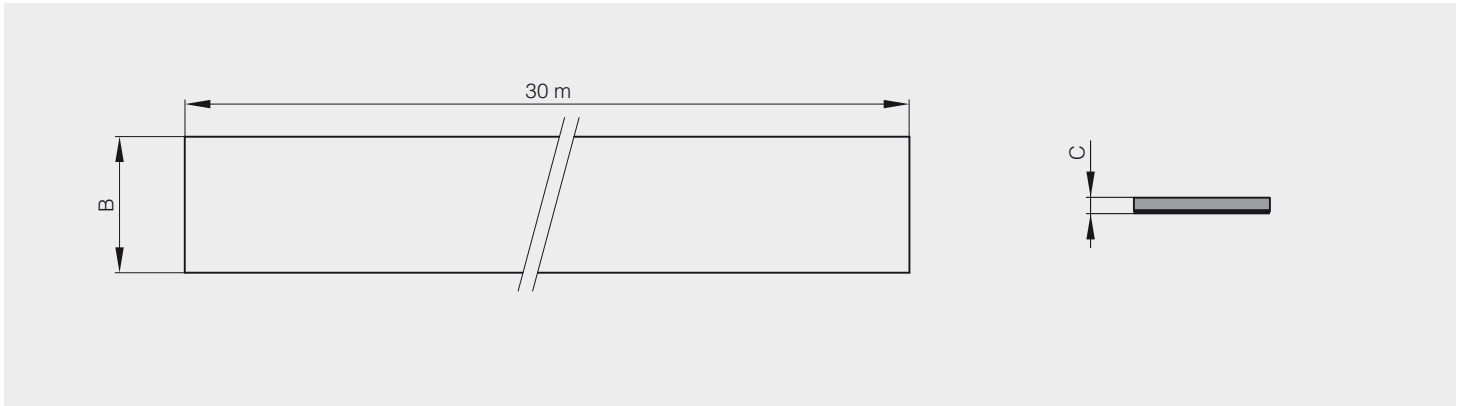
The weight of a roll (30 meters) is:

- 3.36 kg for the part number 16-7-3682.
- 8.70 kg for the part number 16-7-3683.

Heat resistance : 100°C



Part number	Material	Finish	B	C	Force	Weight (g)
16-7-3682	flexible magnet	self adhesive	19	1.5	55 g/cm ²	112
NEW 16-7-3683	flexible magnet	self adhesive	50	1.5	55 g/cm ²	290





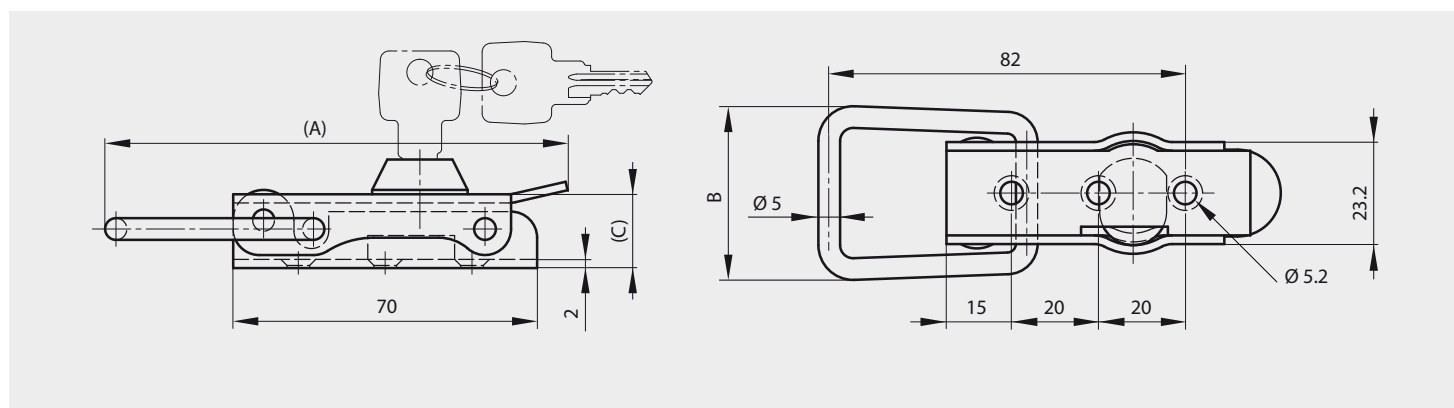
Lockable toggle latch without strike



Keyed alike (2 identical keys).

Strike not included.

Part number	Material	Finish	A	B	C	Weight (g)
16-1-4050	steel	zinc plated	106.5	40	17	132
NEW 16-1-9024	steel	black cataphoresis	106.5	40	17	132
16-1-4257	304 stainless steel	raw	106.5	40	17	132

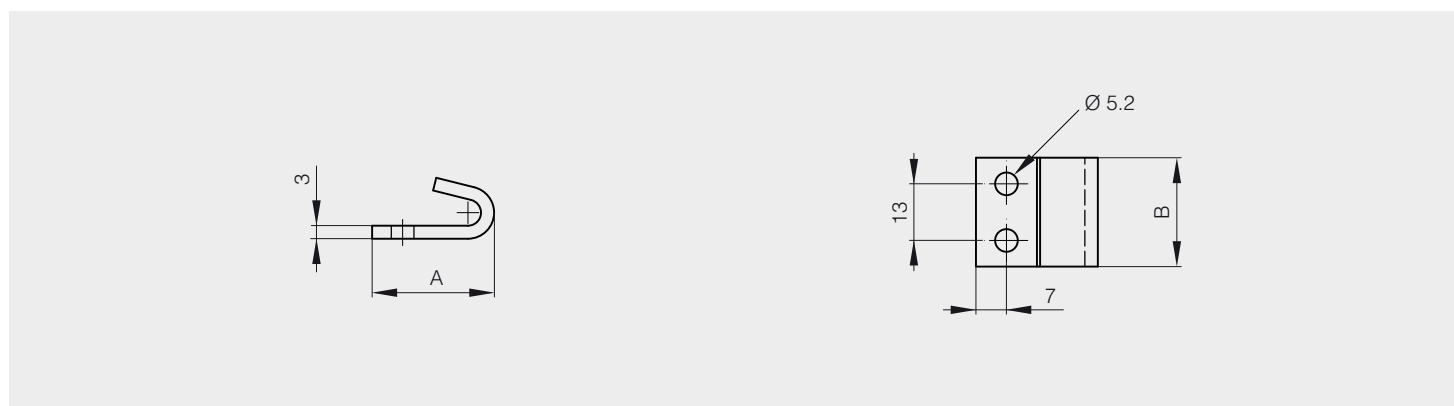


Strikes for part numbers 16-1-4050, 16-1-4257 and 16-7-9024



Possible alternative strikes: 16-1-4038, 16-7-3406 and 16-7-3870.

Part number	Material	Finish	A	B	Weight (g)
16-7-3551	steel	zinc plated	28	25	24
16-7-3601	304 stainless steel	raw	28	25	24





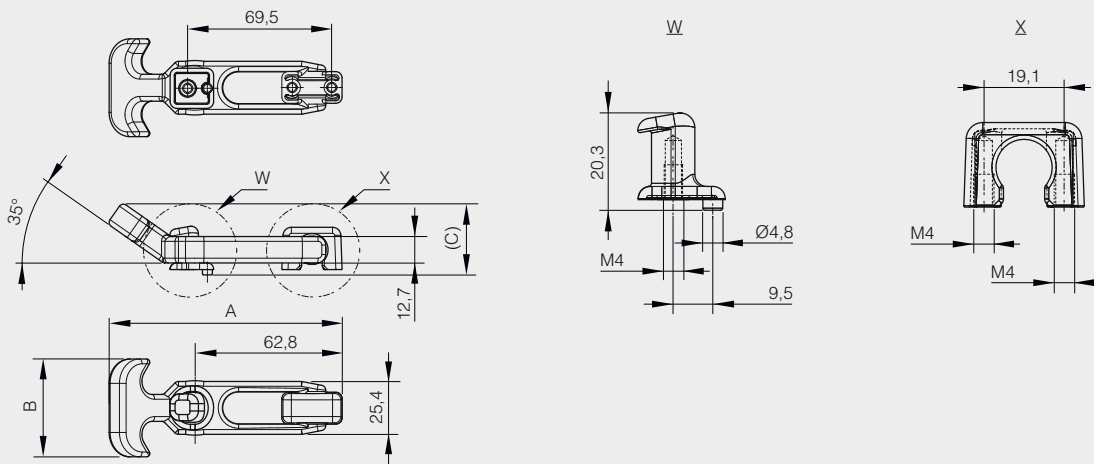
Standard toggle latches

Flexible T-handle latch

Keeper and bracket is Nylon.



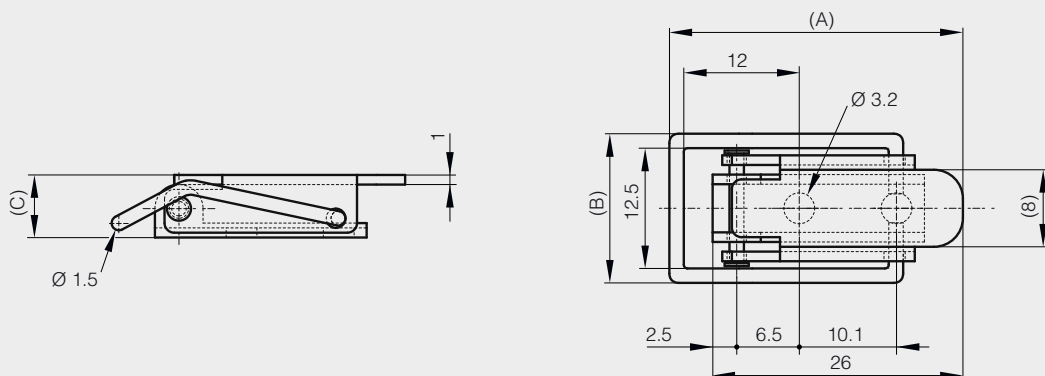
	Part number	Material	Finish	A	B	C	Weight (g)
NEW	16-7-4276	elastomer	black	112	47	34	39



Mini toggle latch without strike - 30.5 mm



	Part number	Material	Finish	A	B	C	Weight (g)
NEW	16-1-4111	steel	zinc plated	30.5	15.4	6.5	4





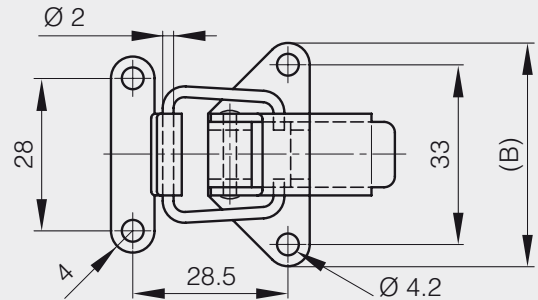
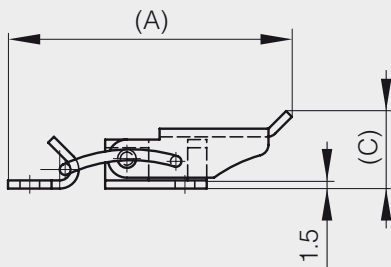
Toggles latches

Standard toggle latches

Toggle latches with strike - 52 mm

STAINLESS
STEEL STEEL RoHS

Part number	Material	Finish	A	B	C	Weight (g)
16-7-3845	steel	zinc plated	52	41	13.5	23
16-7-3846	304 stainless steel	raw	52	41	13.5	23



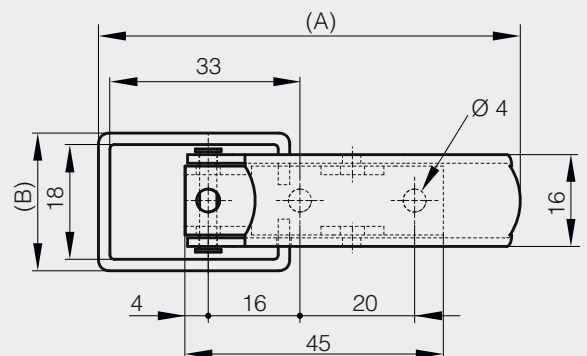
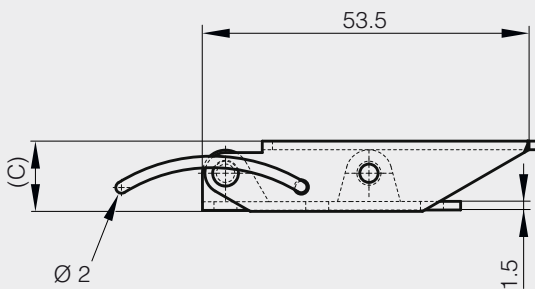
Toggle latch without strike - 73.5 mm



STEEL RoHS

With seal wire hole.
Strike not included.

	Part number	Material	Finish	A	B	C	Weight (g)
NEW	16-1-4130	steel	zinc plated	73.5	22	13	29



FIXOR SL

Calle del Dr. Mata num 5, 08203 Sabadell
Tel 93 710 41 60, tecnica@fixor.es
www.fixor.es



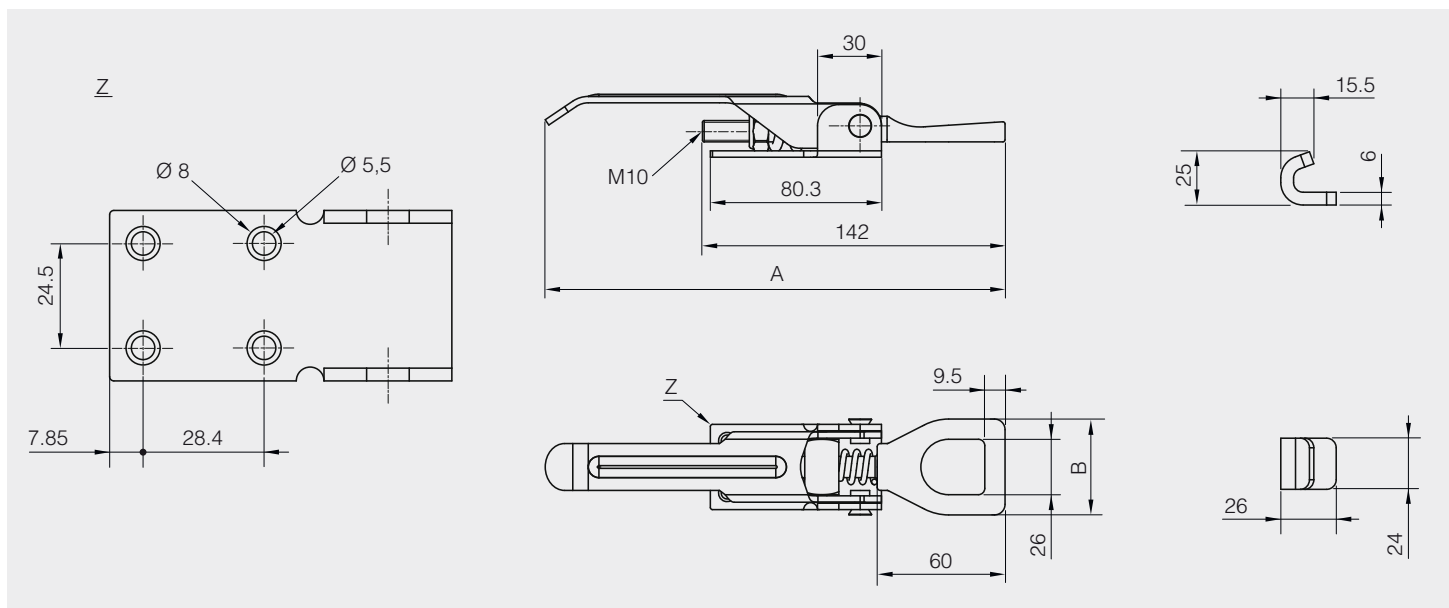
Standard toggle latches

Heavy duty toggle latch with strike



STEEL RoHS

	Part number	Material	Finish	A	B	Weight (g)
NEW	16-7-4277	steel	zinc plated	215.8	45	47

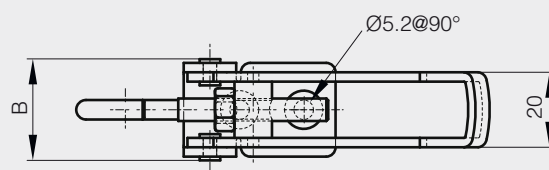
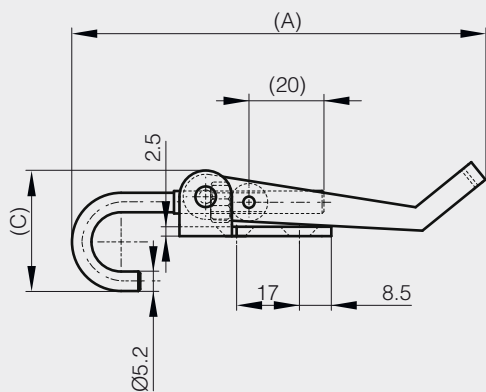




Hooked toggle latch without strike



Part number	Material	Finish	A	B	C	Note	Weight (g)
NEW 16-1-4261	304 stainless steel	raw	80	27	32.1	80<A<107	82



HANDLES

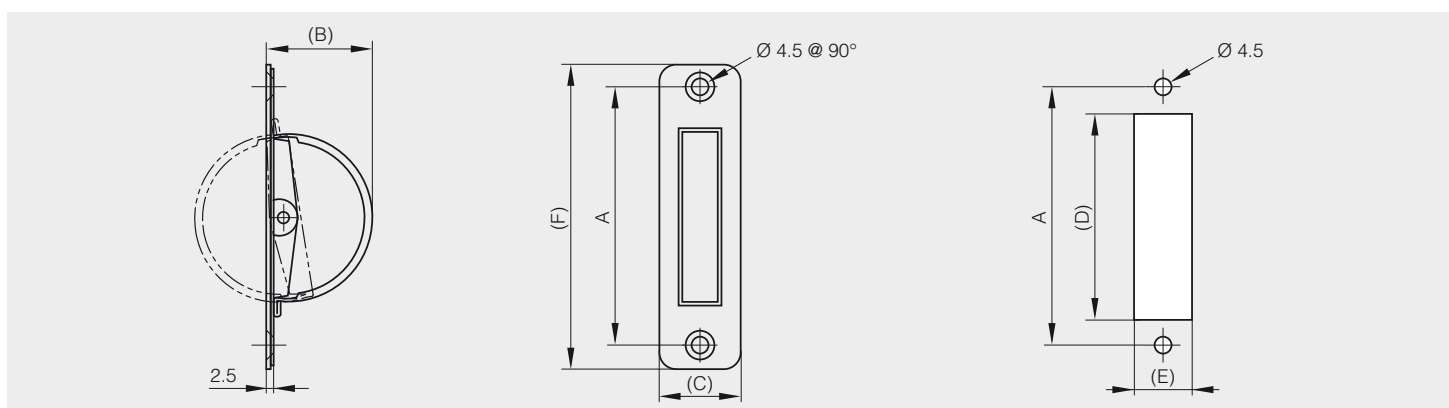


Screw-on flush handles

Retractable flush handles in stainless steel



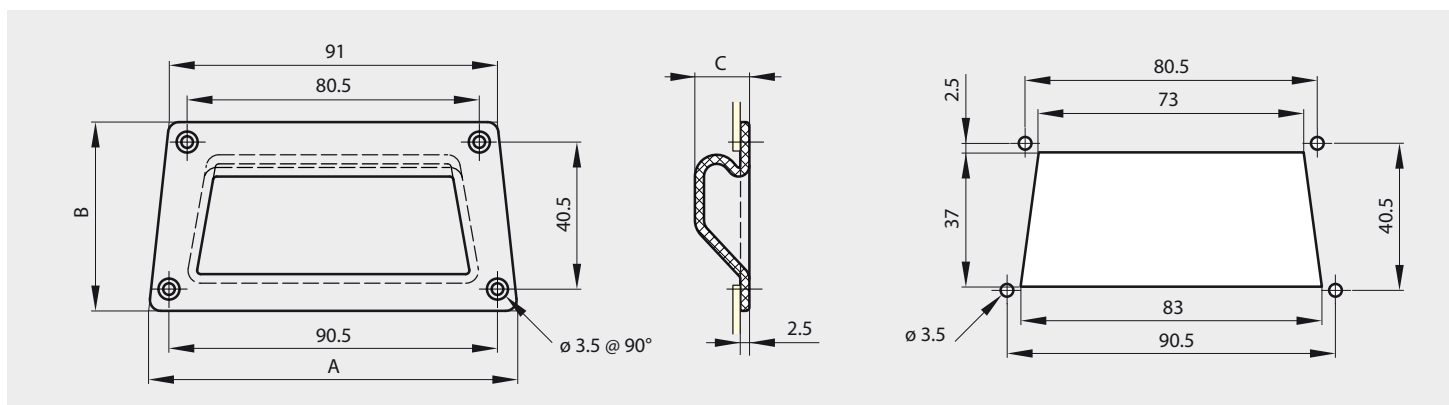
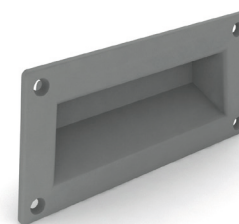
Part number	Material	Finish	A	B	C	D	E	F	Weight (g)
NEW 19-7-3813	304 stainless steel	satin	76	36	24	60	18	90	46
19-7-3814	304 stainless steel	satin	94	42	24	72	18	110	55



Screw-on flush handle 101 x 52 mm



Part number	Material	Finish	A	B	C	Weight (g)
19-7-3642	ABS	grey	101	52	15	20





Flush handles

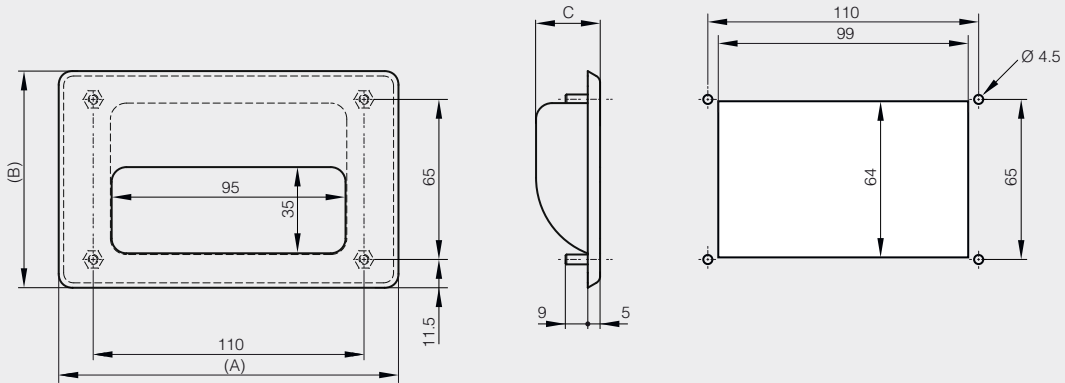
Screw-on flush handles

Bolt-on flush handle 138 x 88 mm

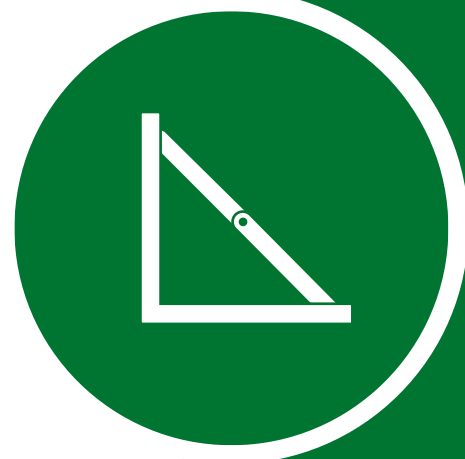


Stud in 304 stainless steel.

	Part number	Material	Finish	A	B	C	Weight (g)
NEW	19-7-3845	304 stainless steel	satin	138	88	26	170



ACCESSORIES

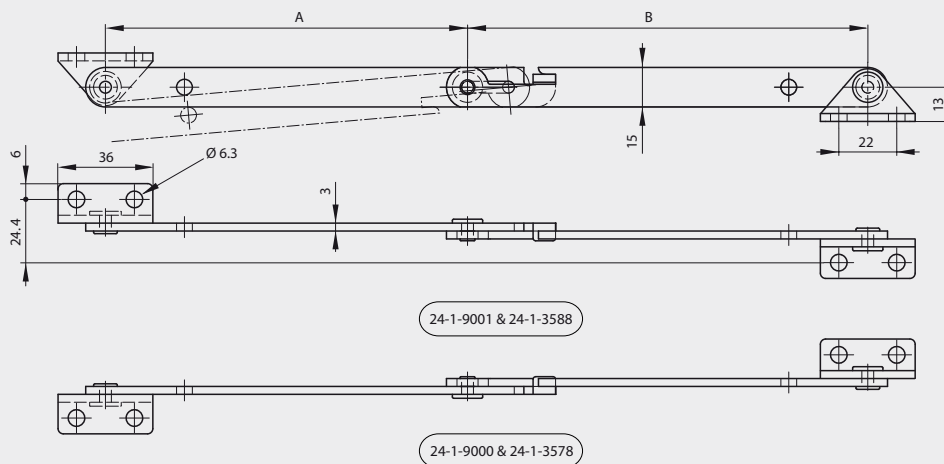




Stay with safety stop



	Part number	Material	Finish	A	B	Weight (g)
NEW	24-1-3578	steel	zinc plated	139	151	148
NEW	24-1-3588	steel	zinc plated	139	151	148
	24-1-9000	304 stainless steel	raw	139	151	148
	24-1-9001	304 stainless steel	raw	139	151	148





Folding bracket



Automatically locks when flap is in opened position.

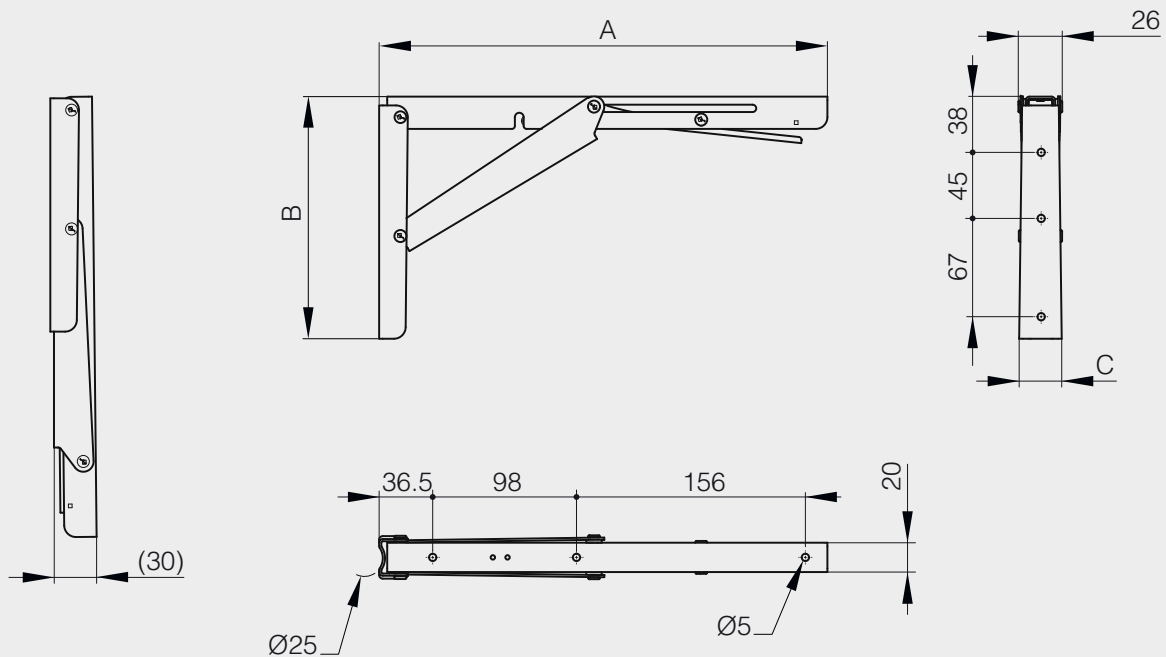
Press lever to release the lock.

Bracket with hinge function in one unit.

Load capacity: 150 kg.



	Part number	Material	Finish	A	B	C	Weight (g)
NEW	24-7-3587	304 stainless steel	polished	305.5	165	29	515



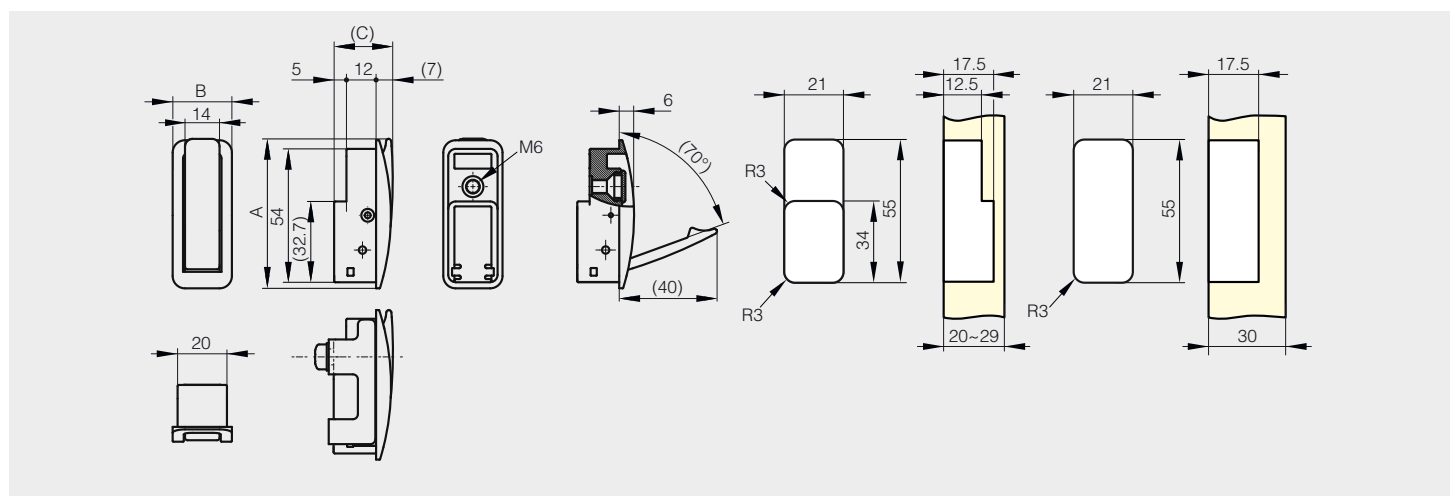
Soft closing recessed hook



Hook is spring loaded to retract with a soft closing mechanism.
 Can be mounted on wood or sheet metal.
 Installation on sheet metal: use bracket 22-7-3551.
 Installation on wooden panel: please take off the cushion rubber.
 Panel Thickness:
 Wood: Min. 20 mm.
 Sheet Metal: 0.8 to 4.0 mm.
 Load capacity: 300 N max.
 Material: aluminium, POM, pin in stainless steel.



	Part number	Material	Finish	A	B	C	Weight (g)
NEW	22-7-3549	aluminium	dark grey	60	24	24	49
NEW	22-7-3550	aluminium	silver	60	24	24	49



Bracket for soft closing recessed hook



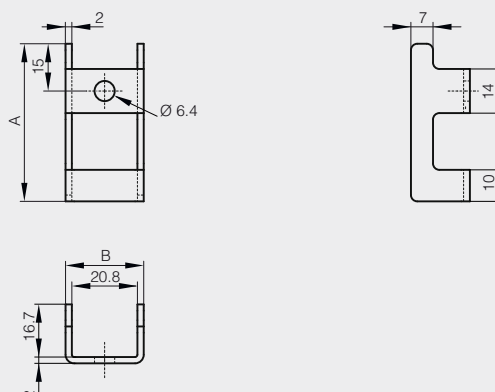
For sheet metal application. Panel thickness from 0.8 to 4.0 mm.
 Supplied with one M6x20 stainless steel screw.

	Part number	Material	Finish	A	B	Weight (g)
NEW	22-7-3551	steel	zinc chromate plated	50	24.8	25



FIXOR^{SL}

Calle del Dr. Mata num 5, 08203 Sabadell
 Tel 93 710 41 60, tecnica@fixores.com
www.fixores.com





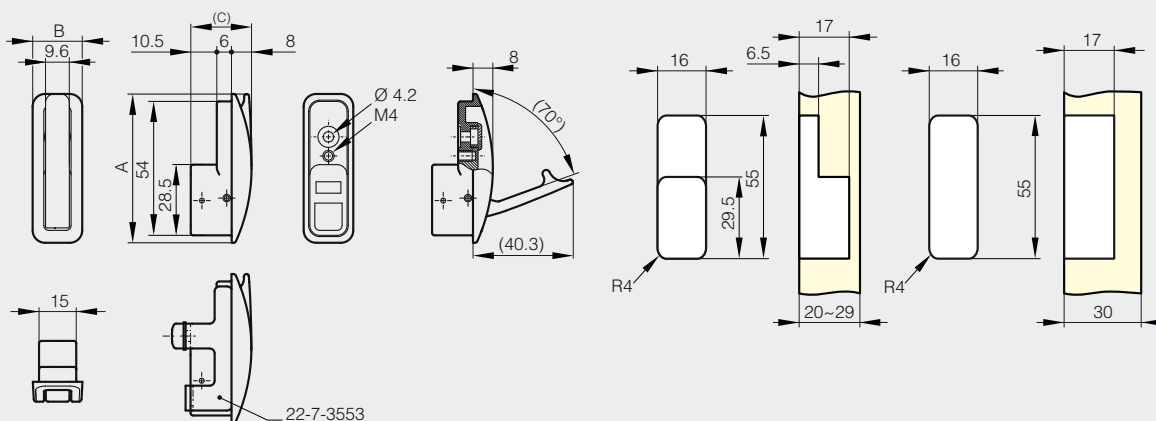
Spring loaded recessed hook



Hook is spring loaded to retract.
 Can be mounted on wood or sheet metal.
 Installation on sheet metal: use bracket 22-7-3553.
 Installation on wooden panel: please take off the cushion rubber.
 Panel Thickness:
 Wood: Min. 20 mm.
 Sheet Metal: 0.8 to 1.6 mm.
 Load capacity: 200 N max.
 Material: aluminium, pin in stainless steel.



	Part number	Material	Finish	A	B	C	Weight (g)
NEW	22-7-3552	aluminium	dark grey	60	20	24.5	31



Bracket for spring loaded recessed hook

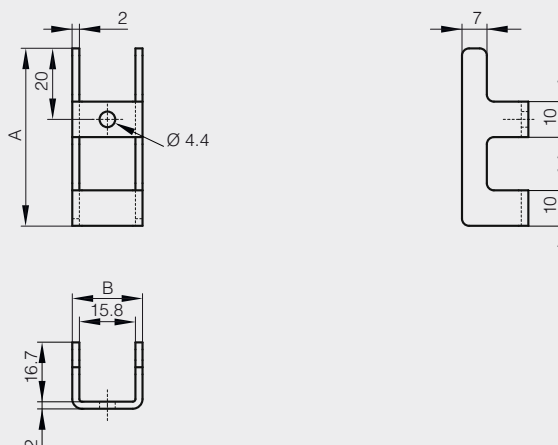


For sheet metal application. Panel thickness from 0.8 to 1.6 mm.
 Supplied with one M4x14 stainless steel screw.

	Part number	Material	Finish	A	B	Weight (g)
NEW	22-7-3553	steel	zinc chromate plated	50	19.8	22



FIXOR^{SL}
 Calle del Dr. Mata num 5, 08203 Sabadell
 Tel 93 710 41 60, tecnica@fixor.es
 www.fixor.es





Telescopic slides

Stainless steel slides

Full extension ball-bearing slide (3 pieces), soft-closing



LG = slide length.

K = travel length.

CN = load rating (kg/pair).

Soft-close slide.

The drawer can be detached by pushing the lever while pulling the drawer out.

Soft-closes at 20 mm distance from closed position (LG = 300-350 mm) or 36 mm distance from closed position (LG = 400-700 mm).

The maximum width of the drawer is the slide length (LG) + 200 mm.

Sold in pairs.

Part number	Material	Finish	K	F	LG	A	B	C	D	E	G	H	CN	Weight (g)
NEW 21-7-3584	304 stainless steel	raw	265	-	300	145	-	-	-	-	-	174	16	390
NEW 21-7-3585	304 stainless steel	raw	340	-	350	151	-	-	-	-	-	224	16	465
NEW 21-7-3586	304 stainless steel	raw	400	-	400	167	-	-	-	96	-	256	20	535
NEW 21-7-3587	304 stainless steel	raw	450	-	450	119	215	-	-	128	-	306	30	605
NEW 21-7-3588	304 stainless steel	raw	500	160	500	119	279	-	-	96	-	344	35	680
NEW 21-7-3589	304 stainless steel	raw	550	160	550	119	215	311	-	96	-	394	35	730
NEW 21-7-3590	304 stainless steel	raw	600	192	600	119	247	375	-	128	-	444	35	830
NEW 21-7-3591	304 stainless steel	raw	650	224	650	119	215	311	407	128	416	494	35	905
NEW 21-7-3592	304 stainless steel	raw	700	224	700	119	215	343	471	128	480	544	35	980

