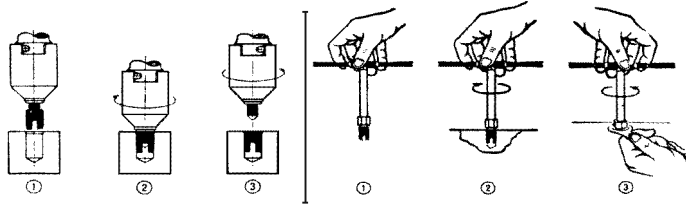


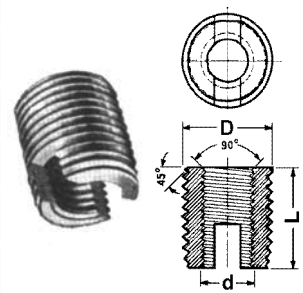
BUSSOLE AUTOFILETTANTI
SELF-TAPPING THREADED INSERTS
GEWINDE - EINSÄTZE
INSERTS FILETÉS AUTOTARAUDEURS
INSERTOS AUTO ROSCANTES



2
25.32

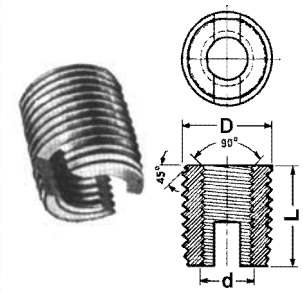
ACCIAIO STEEL	INOX STAINLESS STEEL	OTTONE BRASS	d	D			L
83ACF212M025	83IXF212M025	83FXSCTBM025	M2,5 x 0,45	4,5 x 0,5	4,0 - 4,3	8	6
83ACF212M03	83IXF212M03	83FXSCTBM03	M3 x 0,5	5,0 x 0,5	4,5 - 4,8	8	6
83ACF212M04	83IXF212M04	83FXSCTBM04	M4 x 0,7	6,5 x 0,75	5,8 - 6,2	10	8
83ACF212M05	83IXF212M05	83FXSCTBM05	M5 x 0,8	8,0 x 1,0	7,1 - 7,6	13	10
83ACF212M06A	83IXF212M06A	83FXSCTBM06A	M6 x 1,0	9,0 x 1,0	8,1 - 8,6	15	12
83ACF212M06	83IXF212M06	83FXSCTBM06	M6 x 1,0	10,0 x 1,5	8,6 - 9,4	17	14
83ACF212M08	83IXF212M08	83FXSCTBM08	M8 x 1,25	12,0 x 1,5	10,6 - 11,4	18	15
83ACF212M10	83IXF212M10	83FXSCTBM10	M10 x 1,5	14,0 x 1,5	12,6 - 13,4	22	18
83ACF212M12	83IXF212M12	83FXSCTBM12	M12 x 1,75	16,0 x 1,5	14,6 - 15,4	26	22
83ACF212M14	83IXCF212M14	83FXSCTBM14	M14 x 2,0	18,0 x 1,5	16,6 - 17,4	28	24
83ACF212M16	83IXCF212M16	83FXSCTBM16	M16 x 2,0	20,0 x 1,5	18,6 - 19,4	27	22

F 212



ACCIAIO STEEL	INOX STAINLESS STEEL	OTTONE BRASS	d	D			L
83ACF303M03	83IXF303M03		M3 x 0,5	4,5 x 0,5	4,1 - 4,3	8	6
83ACF303M04	83IXF303M04		M4 x 0,7	6,0 x 0,7	5,5 - 5,7	8	6
83ACF303M05	83IXF303M05		M5 x 0,8	7,0 x 0,8	6,5 - 6,7	10	8
83ACF303M06	83IXF303M06		M6 x 1,0	8,0 x 1,0	7,3 - 7,6	13	10
83ACF303M08	83IXF303M08		M8 x 1,25	10,0 x 1,25	8,9 - 9,4	15	12
83ACF303M10	83IXF303M10		M10 x 1,5	12,0 x 1,5	10,9 - 11,4	18	15

F 303



ACCIAIO STEEL	INOX STAINLESS STEEL	OTTONE BRASS	d	D			L
83ACF318M04-C	83IXF318M04-C		M4 x 0,7	6,5 x 0,8	6,0 - 6,2	8	6
83ACF318M04-L	83IXF318M04-L					10	8
83ACF318M05-C	83IXF318M05-C		M5 x 0,8	8,0 x 1,0	7,4 - 7,7	9	7
83ACF318M05-L	83IXF318M05-L					13	10
83ACF318M06-C	83IXF318M06-C		M6 x 1,0	10,0 x 1,25	9,3 - 9,6	10	8
83ACF318M06-L	83IXF318M06-L					15	12
83ACF318M08-C	83IXF318M08-C		M8 x 1,25	12,0 x 1,5	11,1 - 11,5	11	9
83ACF318M08-L	83IXF318M08-L					17	14
83ACF318M10-C	83IXF318M10-C		M10 x 1,5	14,0 x 1,5	13,1 - 13,5	13	10
83ACF318M10-L	83IXF318M10-L					22	18
83ACF318M12-C	83IXF318M12-C		M12 x 1,75	16,0 x 1,75	15,0 - 15,4	15	12
83ACF318M12-L	83IXF318M12-L					26	22
83ACF318M14-C	83IXF318M14-C		M14 x 2,0	18,0 x 2,0	17,0 - 17,4	17	14
83ACF318M14-L	83IXF318M14-L					28	24

F 318

