



PLUGS

212





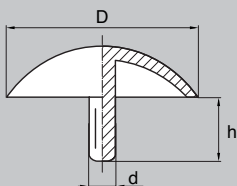
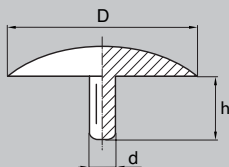
PLUGS

-  > Screw caps / Rivet caps page **216 - 217**
-  > Screw caps TORX / DIN 912 / DIN 7991 page **218 - 219**
-  > Screw caps POZIDRIV / PHILLIPS / Flat heads page **220 - 221**
-  > Decorative screw caps 39548 up to 39570 page **222 - 223**
-  > Caps for various screws / Lamination caps page **224 - 225**
-  > Covers for hex washer faced screws/Screw pRedection covers ... page **226 - 227**
-  > Head covers for hex screws/nuts page **228 - 229**
-  > Cover plugs page **230 - 231**
-  > PRedection caps page **232 - 233**
-  > Caps for round tubes  page **234 - 235**
-  > PRedection plugs page **236 - 237**
-  > Cover plugs form "T" \varnothing 2,0 up to \varnothing 13,2 mm page **238 - 239**
-  > Cover plugs form "T" \varnothing 13,8 up to \varnothing 110,0 mm page **240 - 241**
-  > Taper plugs page **242 - 243**
-  > Threaded plugs BPE 180 / BPE 186 / BPE 933  page **244 - 245**

- 
> Threaded plugs BPE 652 / BPE 654 / BPE 656 ... 
page **246 - 247**
- 
> Threaded plugs BPE 147 / BPE 157 / BPE 207 ... 
page **248 - 249**
- 
> Round hole plugs for tubes
page **250 - 253**
- 
> Square hole plugs for tubes
page **254 - 257**
- 
> Rectangular hole plugs for tubes
page **258 - 261**
- 
> Oval hole plugs for tubes 
page **262 - 263**
- 
> Round hole plugs for tubes with ball-head 
page **264 - 265**
- 
> Angle hole plugs for tubes 
page **266 - 267**
- 
> Threaded round hole plugs for tubes 
page **268 - 269**
- 
> Threaded square hole plugs for tubes 
page **270 - 271**
- 
> Soft PVC round protection caps
page **272 - 273**
- 
> Soft PVC square protection caps
page **274 - 275**
- 
> Soft PVC rectangular protection caps
page **276 - 277**
- 
> PRedection caps for wooden logs 
page **278 - 279**
- 
> Head covers for hex screws/nuts "high model"
page **278 - 279**



PLUGS > Screw caps / Rivet caps

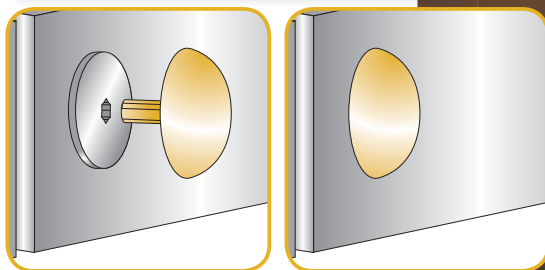


d	D	h	Unit of sale	Part N°
2,2	12,0	5,0	1 000	34353
2,4	13,5	5,0	1 000	34250
2,5	12,0	2,1	1 000	34349
2,5	10,0	5,0	1 000	34450
2,5	12,0	5,0	1 000	34350
2,5	15,0	5,0	1 000	34200
2,6	12,0	3,5	1 000	34351
2,8	5,8	7,0	1 000	34500
2,8	11,0	4,8	1 000	34360
3,0	12,0	5,5	1 000	34300
3,0	12,0	6,0	1 000	34301
3,0	15,0	7,0	1 000	34100
3,0	18,0	9,0	1 000	34000
3,6	15,0	2,5	1 000	34970

d	D	h	Unit of sale	Part N°
2,6	12,0	4,8	1 000	36310
2,6	15,0	4,0	1 000	36055
3,0	13,0	4,0	1 000	36200
3,0	15,0	5,0	1 000	36050
3,0	18,0	2,0	1 000	36001
3,0	18,0	7,0	1 000	36000
3,2	13,0	4,0	1 000	36150
3,2	13,0	10,0	1 000	36100
3,9	15,8	8,8	1 000	36040
4,5	13,0	10,0	1 000	36101

216

- > Protects from dirt.
- > Protects metallic screws from corrosion and deterioration.
- > Resists weather conditions and most chemicals.
- > N.B. : depending on the mould, the surface of the part can be smooth or dull.



MATERIALS - COLOURS

STANDARD :

- Black PE / White PE.

ON REQUEST :

- Beige PE / Brown PE / Grey PE / Green PE / Blue PE.
Any other colour on request.
Minimum quantity : 10 000 pieces per colour.
- Colours : see RAL colour chart page 510 / 511.

Screw cap >>



<< Rivet cap



217



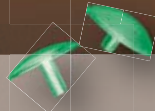
Beige PE



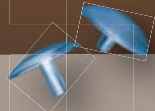
Brown PE



Grey PE



Green PE

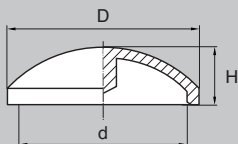


Blue PE



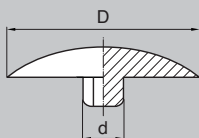
PLUGS > Screw caps TORX

> Allen screw caps DIN 912 / DIN 7991



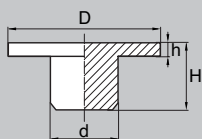
D	Nr.	Unit of sale	Part N°
16,5	25,0	1 000	38650
16,5	30,0	1 000	38655
16,5	40,0	1 000	38660
16,5	40,0	1 000	38661 *

* Short version

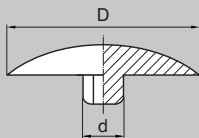


D	Nr.	Unit of sale	Part N°
12,0	10,0	1 000	38601
12,0	15,0	1 000	38603
12,0	20,0	1 000	38605
13,5	25,0	1 000	38610
15,0	25,0	1 000	38612
18,0	25,0	1 000	38615
16,5	30,0	1 000	38620
18,0	40,0	1 000	38625

> N.B. : depending on the mould, the surface of the part can be smooth or dull.



Form A



Form B

For DIN 912 / 7991		A/F	d	D	Form	Unit of sale	Part N°
M4	M5	3	3,1	12,0	B	1 000	35154
M4	M5	3	3,2	9,0	B	1 000	35155
M5	M6	4	4,2	18,0	A	1 000	35000
M5	M6	4	4,2	14,5	B	1 000	35060
M5	M6	4	4,2	13,0	B	1 000	35100
M5	M6	4	4,1	12,5	B	1 000	35101
M5	M6	4	4,2	10,0	A	1 000	35150
M6	M8	5	5,3	18,0	A	1 000	35051
M6	M8	5	5,3	11,5	B	1 000	35052
M6	M8	5	5,3	10,0	B	1 000	35053
M8		6	6,0	13,0	B	1 000	35450
M10		8	8,5	15,0	B	1 000	35800
M12		10	10,0	13,0	B	1 000	351501
M14		12	13,2	17,5	B	1 000	35132
M16		14	15,5	19,0	B	1 000	35010

MATERIALS - COLOURS

STANDARD :

- Black PE / White PE.

ON REQUEST :

- Beige PE / Brown PE / Grey PE / Green PE / Blue PE.
Any other colour on request.
Minimum quantity : 10 000 pieces per colour.
- Colours : see RAL colour chart page 510 / 511.

Screw cap for
TORX screw >>



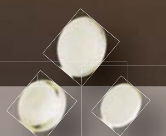
<< Screw cap for countersunk
TORX screw



Allen screw cap for
DIN 912 - DIN 7991 >>



219



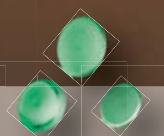
Beige PE



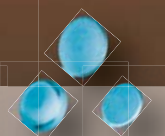
Brown PE



Grey PE



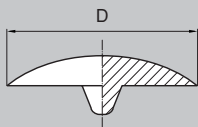
Green PE



Blue PE



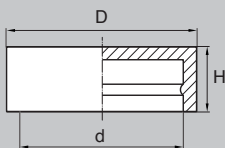
PLUGS > Screw caps POZIDRIV / PHILLIPS / Caps



D	PZ - Nr.	Unit of sale	Part N°
8,0	1,0	1 000	38000
9,0	2,0	1 000	38027
12,0	2,0	1 000	38030
13,0	3,0	1 000	38100
14,5	3,0	1 000	38110
14,0	4,0	1 000	38200
18,0	4,0	1 000	38250
18,0	5,0	1 000	38300



D	Nr.	Type	Unit of sale	Part N°
12,0	2,0		1 000	38500
12,0	2,0	flat	1 000	38501
15,0	3,0		1 000	38505



d	D	H	Unit of sale	Part N°
9,0	14,0	5,8	1 000	39100
9,8	12,5	4,7	1 000	39461
10,0	12,5	4,7	1 000	39460
12,5	14,7	4,2	1 000	39450

> N.B. : depending on the mould, the surface of the part can be smooth or dull.

MATERIALS - COLOURS

STANDARD :

- Black PE / White PE.

ON REQUEST :

- Beige PE / Brown PE / Grey PE / Green PE / Blue PE.
Any other colour on request.
Minimum quantity : 10 000 pieces per colour.
- Colours : see RAL colour chart page 510 / 511.

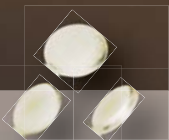
Screw cap >>
Pozidriv



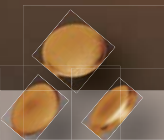
<< Screw cap for countersunk
Phillips screw



Cap for >>
flat head screw



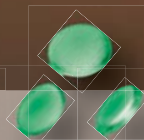
Beige PE



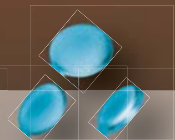
Brown PE



Grey PE



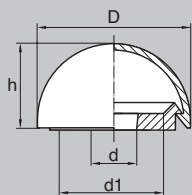
Green PE



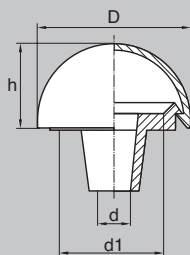
Blue PE



PLUGS > Decorative screw caps 39548 up to 39570

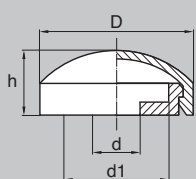


39548

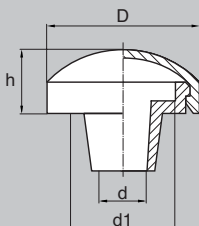


39553

For screw	d	d1	D	h	Unit of sale	Part N°
M4 / M5	5,0	10,0	14,5	7,0	1 000	39548
M5 / M6	6,0	9,5	14,5	7,0	1 000	39553

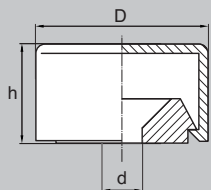


39550

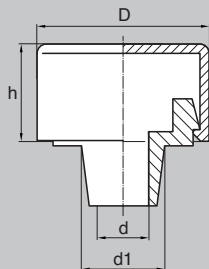


39554

For screw	d	d1	D	h	Unit of sale	Part N°
M4 / M5	5,0	10,0	14,5	5,0	1 000	39550
M5	5,2	9,5	14,5	5,0	1 000	39554



39570



39567

For screw	d	d1	D	h	Unit of sale	Part N°
M5 / M6	6,0	12,5	19,5	8,0	1 000	39570
M5 / M6	6,0	12,5	19,5	8,0	1 000	39567

> N.B. : depending on the mould, the surface of the part can be smooth or dull.

MATERIALS - COLOURS

STANDARD :

- Black PE / White PE.
The washer delivered with the cap is always of natural colour.

ON REQUEST :

- Beige PE / Brown PE / Grey PE / Green PE / Blue PE.
Any other colour on request.
Minimum quantity : 5 000 pieces per colour.
- Colours : see RAL colour chart page 510 / 511.

Decorative screw cap >>
cap **39548**



<< Decorative screw cap
39550



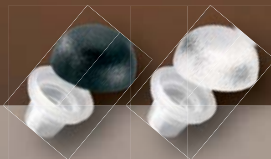
Decorative screw cap >>
39570



Screw cap 39554



Screw cap 39567

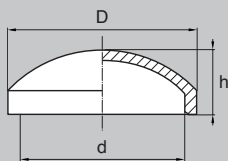


Screw cap 39553



PLUGS

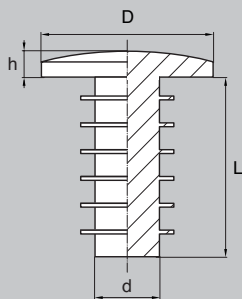
- > Caps for various screws
- > Lamination caps



- > Protects from dirt.
- > Protects from corrosion.
- > Resists weather conditions and most chemicals.
- > Other colours on request.

d	D	h	Unit of sale	Part N°
6,0	9,0	3,5	1 000	39425
6,0	10,0	4,0	1 000	39420
7,0	10,5	5,0	1 000	39403
7,0	12,0	4,2	1 000	39400
8,5	12,0	2,5	1 000	39250
9,0	12,0	2,5	1 000	39300
9,0	12,0	5,0	1 000	39350
9,0	14,0	4,7	1 000	39050
10,5	14,5	3,8	1 000	39009
11,0	14,5	3,8	1 000	39010
11,6	17,0	4,0	1 000	39000
12,0	17,0	3,6	1 000	39001
15,0	16,5	6,7	1 000	39004
15,0	19,0	5,7	1 000	39006

224



For tapping	L	D	h	Unit of sale	Part N°
M8	10,0	19,0	3,0	1 000	39810
M8	29,0	19,0	3,0	1 000	39830
M10	29,0	19,0	3,0	1 000	39030
M12	29,0	20,0	3,0	1 000	39230

> N.B. : depending on the mould, the surface of the part can be smooth or dull.

MATERIALS - COLOURS

Caps for various screws

STANDARD :

- Black PE / White PE.

ON REQUEST :

- Beige PE / Brown PE / Grey PE / Green PE.
- Minimum quantity : 10 000 pieces per colour.
- Colours : see RAL colour chart page 510 / 511.

Lamination caps

STANDARD :

- Natural PE.

ON REQUEST :

- Black PE.
- Minimum quantity : 20 000 pieces.
- Colours : see RAL colour chart page 510 / 511.

Cap for various screws >>



225

<< Lamination cap



White PE



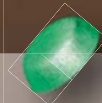
Beige PE



Brown PE



Grey PE



Green PE

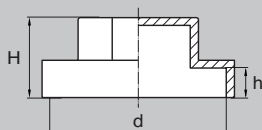


Black PE



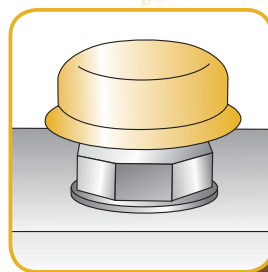
PLUGS

- > Covers for hex washer faced screws
- > Screw protection covers

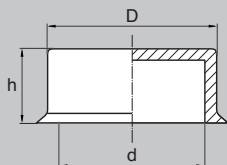


For screw	A/F	d	H	h	Unit of sale	Part N°
M5	8	18,0	9,2	6,0	1 000	32105
M5	8	25,0	11,2	5,8	1 000	32106
M6	10	18,0	9,0	5,7	1 000	32110
M6	10	25,0	10,8	5,4	1 000	32115
3/8"	9,4	18,0	8,9	6,2	1 000	32100
3/8"	9,4	25,0	10,0	5,7	1 000	32101
M8	13	25,0	10,7	3,5	1 000	32125

- > Protects from dirt
- > Protects metallic screws from corrosion and deterioration.
- > Polyethylene (PE) resists acids, greases and oils...



226



d	A/F	D	h	Unit of sale	Part N°
M8	13	17,5	8,5	1 000	32000
M10	17	21,5	10,8	1 000	32050

> N.B. : depending on the mould, the surface of the part can be smooth or dull.

MATERIALS - COLOURS

STANDARD :

- Black PE / White PE.

ON REQUEST :

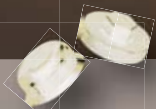
- Beige PE / Brown PE / Grey PE / Green PE / Blue PE.
Any other colour on request.
Minimum quantity : 10 000 pieces per colour..
- Colours : see RAL colour chart page 510 / 511.

Cover for hex washer
faced screws >>



<< Screw
protection cover

227



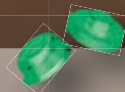
Beige PE



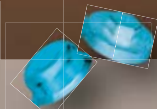
Brown PE



Grey PE



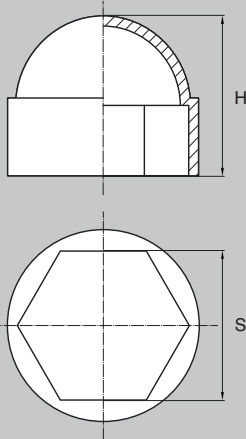
Green PE



Blue PE



PLUGS > Head covers for hex screws / nuts

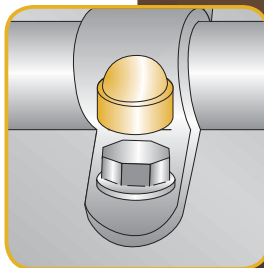
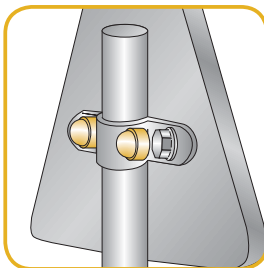


M	S (A/F)	H	Unit of sale	Part N°
M4	7	8,8	1 000	5304
M5	8	11,0	1 000	5305
M6	10	12,8	1 000	5306
M8	13	15,8	1 000	5308
M10	16	19,0	1 000	5310CLE16
M10	17	20,0	1 000	5310
M12	18	20,0	1 000	5312CLE18
M12	19	21,0	1 000	5312
M14	22	23,8	500	5314
M16	24	26,5	500	5316
M18	27	30,5	500	5318
M20	30	31,5	500	5320
M24	36	39,0	500	5324
M27	42	44,0	500	5327
M30	46	47,5	500	5330
M36	55	56,0	250	5336
M39	60	59,0	250	5339
M42	65	62,0	250	5342
M45	70	69,0	250	5345

"High" models (M22 and M24) : see page 278.

228

- > Protects from dirt.
- > Protects steel screws from corrosion and deterioration.
- > Polyethylene (PE) resists acids, greases and oils...
- > N.B. : depending on the mould, the surface of the part can be smooth or dull.



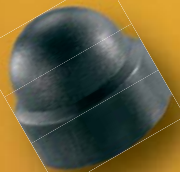
MATERIALS - COLOURS

STANDARD :

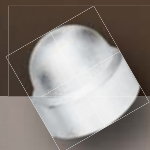
- Black PE / White PE / Grey PE RAL 7038 / Brown PE RAL 8011.

ON REQUEST :

- Blue PE / Red PE / Green PE.
- Any other colour on request.
- Minimum quantity : 10 000 pieces per colour from M4 to M20 and on request from M24 to M45.
- Colours : see RAL colour chart page 510 / 511.



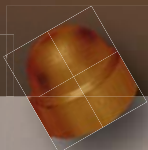
229



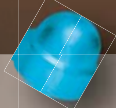
White PE



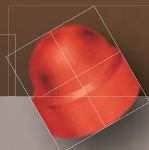
Grey PE



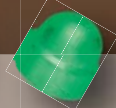
Brown PE



Blue PE



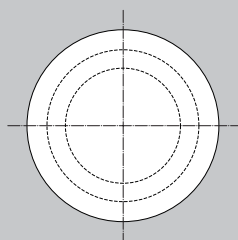
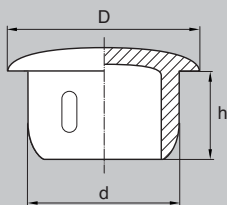
Red PE



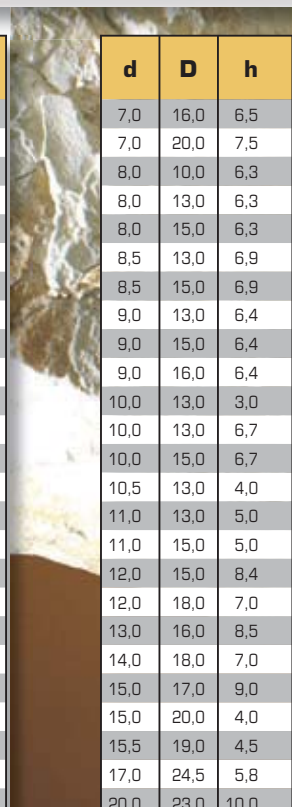
Green PE



PLUGS > Cover plugs



d	D	h	Unit of sale	Part N°
4,0	6,4	5,3	1 000	40470
4,0	10,0	5,3	1 000	40310
4,0	13,0	5,3	1 000	41655
4,1	8,0	7,0	1 000	40455
5,0	6,6	5,5	1 000	40460*
5,0	8,0	5,0	1 000	40451
5,0	10,0	5,5	1 000	40300
5,0	13,0	5,5	1 000	41650
5,0	15,0	5,5	1 000	41001
5,0	20,0	7,5	1 000	42004
5,2	13,0	7,0	1 000	41600
5,4	8,0	7,5	1 000	40401
5,4	10,0	7,4	1 000	40250
5,4	13,0	7,4	1 000	41550
5,4	15,0	7,4	1 000	41000
5,5	10,0	5,6	1 000	40200
5,5	15,0	5,6	1 000	42990
6,0	8,0	5,4	1 000	40350
6,0	10,0	5,4	1 000	40150
6,0	13,0	5,4	1 000	41450
6,0	15,0	5,4	1 000	42950
6,6	13,0	7,0	1 000	41400
7,0	10,0	3,9	1 000	40100
7,0	10,0	6,5	1 000	40050
7,0	13,0	6,5	1 000	41350
7,0	15,0	6,5	1 000	42900



d	D	h
7,0	16,0	6,5
7,0	20,0	7,5
8,0	10,0	6,3
8,0	13,0	6,3
8,0	15,0	6,3
8,5	13,0	6,9
8,5	15,0	6,9
9,0	13,0	6,4
9,0	15,0	6,4
9,0	16,0	6,4
10,0	13,0	3,0
10,0	13,0	6,7
10,0	15,0	6,7
10,5	13,0	4,0
11,0	13,0	5,0
11,0	15,0	5,0
12,0	15,0	8,4
12,0	18,0	7,0
13,0	16,0	8,5
14,0	18,0	7,0
15,0	17,0	9,0
15,0	20,0	4,0
15,5	19,0	4,5
17,0	24,5	5,8
20,0	23,0	10,0

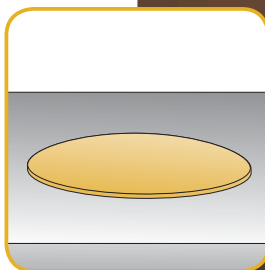
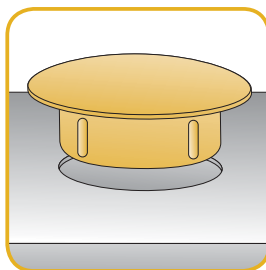
230

> Protects from dirt.

> Polyethylene (PE) resists acids, greases and oils...

> N.B. : depending on the mould, the surface of the part can be smooth or dull.

* = Flat top.



MATERIALS - COLOURS

STANDARD :

- Black PE / White PE.

ON REQUEST :

- Beige PE / Brown PE / Grey PE / Green PE / Blue PE.
Any other colour on request.
Minimum quantity : 5 000 pieces per colour.
- Colours : see RAL colour chart page 510 / 511.

Unit of sale	Part N°
1 000	42550
1 000	42002
1 000	40000
1 000	41300
1 000	42850
1 000	41250
1 000	42800
1 000	41200
1 000	42750
1 000	42400
1 000	41150
1 000	41100
1 000	42700
1 000	41050
1 000	41040
1 000	42650
1 000	42600
1 000	42150
1 000	42200
1 000	42100
1 000	42160*
1 000	42000
1 000	42010
1 000	40850
1 000	40900*



White PE



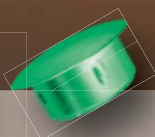
Beige PE



Brown PE



Grey PE



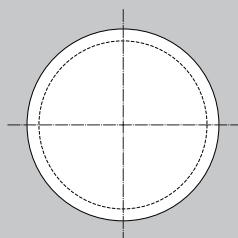
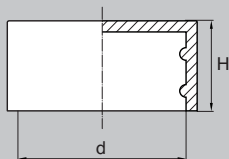
Green PE



Blue PE



PLUGS > Protection caps



d	H	For thread	Part N°
5,7	12,0	M6	0057
7,8	14,3	M8 5/16"	0078
9,8	11,0	M10 R 1/8" 13/32"	0098
10,2	8,0		0102
10,5	8,0		0105
11,5	12,0	M12 15/32"	0115
12,7	13,5	R 1/4"	0127
12,7	18,0	R 1/4"	01271
13,5	13,5	M14 17/32"	0135
15,7	15,0	M16 5/8"	0157
15,7	22,8	M16 5/8"	01571
15,9	14,0	R 3/8" 11/16"	0159
17,7	15,0	M18 23/32"	0177
19,3	15,0		0193
19,7	14,0	M20 25/32"	0197
20,6	15,0	R 1/2" 27/32"	0206
21,3	15,5	M22 R 5/8" 7/8"	0213
23,5	18,5	M24 15/16"	0235
25,4	17,5	M26	0254
26,2	18,5	R 3/4" 1 1/6"	0262
29,3	18,0	M30	0293

d	H	For thread
33,4	22,5	R 1" 1 11/32"
33,4	45,0	R 1" 1 11/32"
34,8	25,0	
35,7	14,0	
37,5	20,0	1 1/2"
41,9	28,0	R 1 1/4" 1 11/16"
47,8	29,5	R 1 1/2" 1 29/32"
50,6	29,0	
51,6	16,0	
52,5	30,0	R 1 3/4"
56,7	19,0	2 1/4"
59,7	30,0	R 2" 2 3/8"
59,7	29,5	R 2" 2 3/8"
69,8	25,0	2 3/4"
75,5	35,0	R 2 1/2"
75,8	18,0	3"
79,8	25,0	
88,4	36,0	R 3"
88,8	24,0	3 1/2"
101,8	23,5	4"

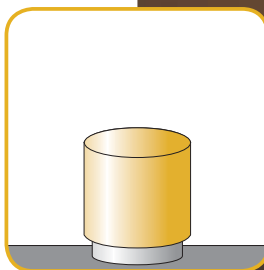
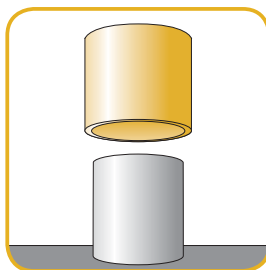
> Protects from dirt and damage.

> Polyethylene (PE) resists acids, greases and oils...

> N.B. : depending on the mould, the surface of the part can be smooth or dull.

> Unit of sale : 1 000 pieces per reference up to ø 59.7 mm, over : 500 pieces.

Part N° 05971 with drilling hole.



MATERIALS - COLOURS

STANDARD :

- Natural PE.

ON REQUEST :

- Black PE / Green PE / Grey PE / Red PE / Yellow PE / Blue PE.

Any other colour on request.

Minimum quantity : 20 000 pieces per colour.

- Colours : see RAL colour chart page 510 / 511.

Part N°

0334
03341
0348
0357
0375
0419
0478
0506
0516
0525
0567
0597
05971
0698
0755
0758
0798
0884
0888
1018



Black PE



Green PE



Grey PE



Red PE



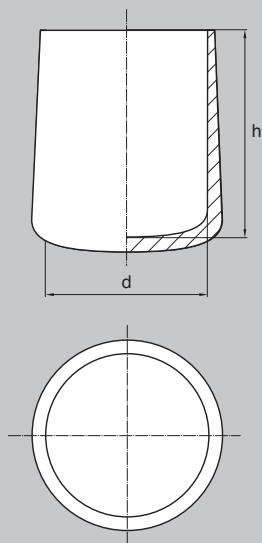
Yellow PE



Blue PE



PLUGS > Caps for round tubes



d	h	Unit of sale	Part N°
6,0	11,0	1 000	EPT6
8,0	12,0	1 000	EPT8
10,0	12,5	1 000	EPT10
12,0	14,5	1 000	EPT12
16,0	19,5	1 000	EPT16
18,0	21,0	1 000	EPT18
20,0	20,5	1 000	EPT20
22,0	23,5	1 000	EPT22
25,0	23,5	1 000	EPT25
28,0	25,0	1 000	EPT28
32,0	26,0	500	EPT32
34,0	26,0	500	EPT34
38,0	28,0	500	EPT38
40,0	24,0	500	EPT40
48,0	24,0	400	EPT48

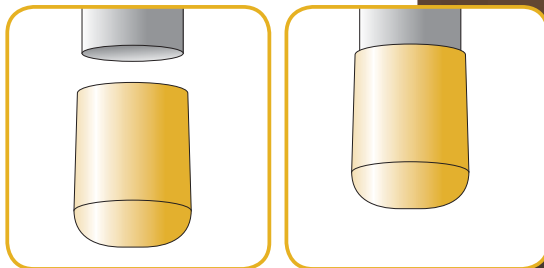


234

> Resists UV.

> Protects from dirt and damage.
Polyethylene (PE) resists acids, greases and oils...

> N.B. : depending on the mould, the surface of the part can be smooth or dull.



MATERIALS - COLOURS

STANDARD :

- Black PE / Grey PE RAL 7042 / White PE RAL 9003.
- Minimum quantity for white colour : 5 000 pieces.

ON REQUEST :

- Grey PE / Natural PE / Green PE / Blue PE / Red PE.
- Minimum quantity on request.



235



White PE



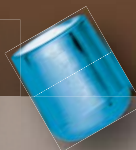
Grey PE



Natural PE



Green PE

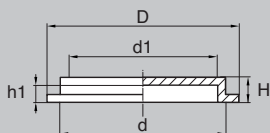
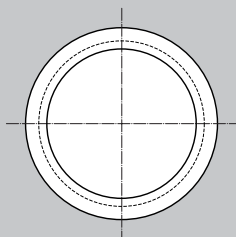
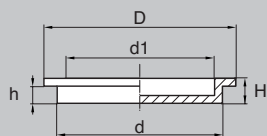


Blue PE



Red PE





d	d1	D	h	h1	H	For thread	Unit of sale
9,1	8,0	12,9	6,5	7,0	7,8	M10 x 1,0 R 1/8"	1 000
						M10 x 1,25	
12,1	10,7	15,9	7,0	7,7	8,2	M14 R 1/4"	1 000
16,0	14,4	19,6	7,7	8,3	8,7	M18 M17 x 1,0 R 3/8"	1 000
						M18 x 2,0	
19,6	18,3	23,3	8,3	9,4	9,8	M22 M20 x 0,75 R 1/2"	1 000
25,1	24,2	28,8	8,5	8,7	9,8	M27 x 2,0 R 3/4"	1 000
31,8	30,1	35,8	8,5	8,8	9,9	M36 M33 x 1,5 R 1"	1 000
						M33 x 2,0	
40,5	37,3	47,0	9,0	9,0	10,7	M45 M42 x 1,5 R 1 1/4"	1 000
						M42 x 2,0	
46,0	43,7	51,0	9,0	9,0	11,0	M48 x 2,0 R 1 1/2"	1 000
58,0	55,7	66,0	8,0	9,4	11,0	M64 M60 x 2,0 R 2"	1 000
						M62 x 4,0	
72,5	70,7	83,0	13,0	13,1	14,4	M75 x 3,0 R 2 1/2"	500
						M76 x 4,0	
111,5	107,8	127,5	19,0	16,2	21,2	R 4"	500

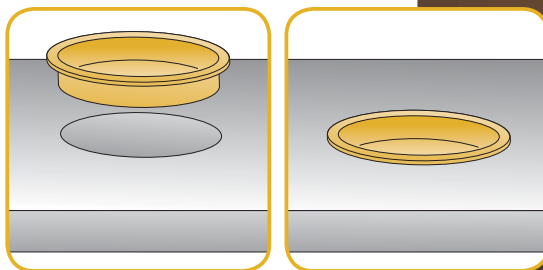
* = internal diameter (d1) reinforced.

236

> Protects from dirt.

> Polyethylene (PE) resists acids, greases and oils...

> N.B. : depending on the mould, the surface of the part can be smooth or dull.



MATERIALS - COLOURS

STANDARD :

- Natural PE.

ON REQUEST :

- Black PE / Green PE / Blue PE / Yellow PE / Red PE / Grey PE.

Minimum quantity on request :

≈ 20 000 pieces depending on dimension.

- Colours : see RAL colour chart page 510 / 511.

Bülte

Part
N°

3091

3121

3160

3196

3251

3318

3405

3460

3580

3725

3110*

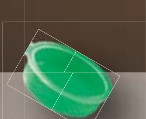


PLUGS

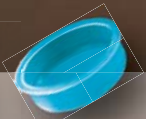
237



Black PE



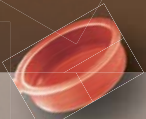
Green PE



Blue PE



Yellow PE



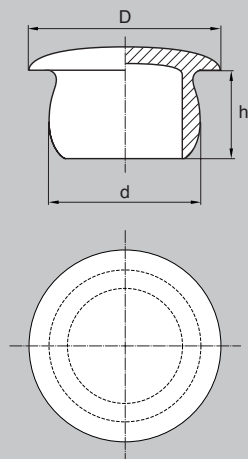
Red PE



Grey PE



PLUGS > Cover plugs form "T" \varnothing 2,0 up to \varnothing 13,2 mm



d	D	h	For thread	Unit of sale	Part N°
2,0	3,5	7,0	M2,5 M2,2 x 0,25	1 000	4021
2,6	12,0	4,8	M3	1 000	36310
3,0	13,0	4,0	M3,5 M3,5 x 0,35	1 000	36200
4,4	9,0	5,5	M5	1 000	4044
4,6	7,0	5,0	M5 x 0,5	1 000	4047
5,2	11,0	6,0	M6 M6 x 0,75	1 000	4052
5,4	12,0	7,5	M6 M6 x 0,75	1 000	4054
6,0	11,0	7,0	M7	1 000	4060
6,6	7,5	5,0		1 000	4066
7,0	11,0	6,5	M8 M8 x 1,0	1 000	4070
7,3	11,0	6,0	M8 M8 x 0,75	1 000	4073
			M8 x 1,0		
7,5	11,0	4,5	M8 x 0,75	1 000	4075
8,0	12,0	7,5	M9 M9 x 1,0	1 000	4080
8,5	12,0	8,0	M10	1 000	4085
8,8	11,5	8,0	M10 M10 x 1,25 R 1/8"	1 000	4088
9,3	12,0	9,0	M10 x 0,75 R 1/8"	1 000	4093
			M10 x 1,0		
10,0	15,0	9,0	M11 M11 x 1,0	1 000	4100
10,0	12,0	4,0	M11 M11 x 1,0	1 000	41001
10,7	15,0	9,0	M12 M12 x 1,25	1 000	4107
			M12 x 1,5		
11,9	15,0	8,4	M14 R 1/4"	1 000	42600
12,0	23,0	8,0	M14 R 1/4"	1 000	41191
12,6	17,5	9,0	M14 M14 x 1,5	1 000	4125
13,2	17,5	8,0	M14 x 1,0	1 000	4132

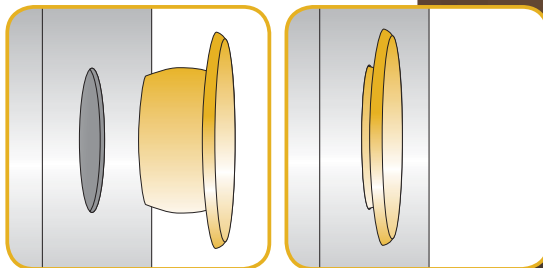
238

> Protects from dirt.

> Polyethylene (PE) resists acids, greases and oils...

> N.B. : depending on the mould, the surface of the part can be smooth or dull.

→ Continued next page.



MATERIALS - COLOURS

STANDARD :

- Natural PE.

ON REQUEST :

- Black PE / Green PE / Blue PE / Yellow PE / Red PE / Grey PE.

Minimum quantity on request :

≈ 20 000 pieces depending on dimension.

- Colours : see RAL colour chart page 510 / 511.



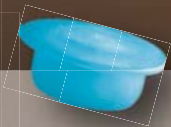
239



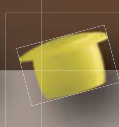
Black PE



Green PE



Blue PE



Yellow PE



Red PE



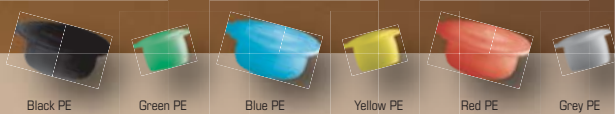
Grey PE



PLUGS > Cover plugs form "T" \varnothing 13,8 up to \varnothing 110,0 mm

d	D	h	For thread		Unit of sale	Part N°
13,8	19,5	8,5	M14	M14 x 0,5	1 000	4136
				M15 x 1,5		
14,8	18,5	9,0	M16	M16 x 1,5	1 000	4143
15,4	19,5	8,5	M18	M16 x 0,75 R 3/8"	1 000	4154
				M16 x 1,0	1 000	
16,0	19,0	8,5	M18	M16 x 0,75 R 3/8"	1 000	4157
16,8	20,0	9,0		M18 x 1,5	1 000	4168
17,2	23,0	9,5		M18 x 0,75	1 000	4172
				M18 x 1,0		
18,9	21,5	9,2		M20 x 2,0	1 000	4183
19,6	25,5	9,3	M22	M20 x 0,75 R 1/2" Pg 13,5	1 000	4196
19,6	29,0	9,3	M22	M20 x 0,75 R 1/2" Pg 13,5	1 000	41961
20,5	25,5	9,0	M22	M22 x 2,0	1 000	4200
21,1	26,0	13,0	M24	M22 x 1,0 R 5/8"	1 000	4210
				M22 x 1,5		
22,7	29,0	9,0		M24 x 2,0	1 000	4223
23,0	27,4	19,6		M24 x 1,0	1 000	4230
24,0	27,0	12,5	M27	M25 x 1,0	1 000	4240
25,0	32,0	13,0	M27	M25 x 1,0 R 3/4"	1 000	4245
				M26 x 1,5		
25,0	36,0	13,0	M27	M25 x 1,0 R 3/4"	1 000	42451
				M26 x 1,5		
26,0	31,5	12,0		M28 x 2,0	1 000	4260
27,1	29,6	15,0	M30	M28 x 1,0 Pg 21	1 000	4272
				M30 x 3,0	1 000	
29,0	34,5	15,0		M30 x 1,5 R 7/8"	1 000	4286
				M30 x 2,0		
31,2	38,0	13,0	M33	M32 x 1,5 R 1"	1 000	4312
				M33 x 2,0		
31,2	45,0	13,0	M33	M32 x 1,5 R 1"	1 000	43121
				M33 x 2,0		

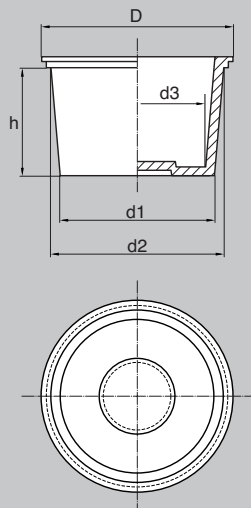




d	D	h	For thread		Unit of sale	Part N°
33,5	41,0	12,1		M35 x 1,5	1 000	4335
34,0	40,0	20,0		M36 x 2,0	1 000	4340
35,5	47,0	14,5	M39	R 1 1/8" Pg 29	1 000	4356
36,5	47,0	18,0		M38 x 1,5 R 1 1/8"	1 000	4365
				M39 x 3,0		
39,7	46,0	16,0		M42 x 3,0 R 1 1/4"	1 000	4395
39,7	51,0	15,0		M42 x 3,0 R 1 1/4"	1 000	43951
39,7	42,0	15,0		M42 x 3,0 R 1 1/4"	1 000	43952
42,0	44,5	12,8		M45 x 3,0	1 000	4420
43,3	50,5	14,5	M48	M45 x 2,0	1 000	4433
45,5	51,0	16,0		M48 x 3,0	1 000	4455
46,0	51,0	16,5		R 1 1/2" Pg 36	500	4458
46,2	58,0	16,5		R 1 1/2" Pg 36	500	44581
51,3	57,0	15,5	M56	M52 x 1,5 R 1 3/4" Pg 36	500	4505
				M52 x 2,0		
52,3	60,0	16,0		M55 x 3,0 R 1 3/4"	500	4520
				M55 x 4,0		
				M56 x 4,0		
55,3	59,5	19,5	M60	M58 x 3,0	500	4553
55,5	58,6	15,6	M60	M58 x 3,0	500	4555
57,2	62,3	19,8		M60 x 2,0 R 2" Pg 48	500	4580
				M60 x 3,0		
				M62 x 4,0		
61,5	74,7	20,0	M68	M64 x 3,0	500	4615
				M65 x 4,0		
70,0	80,0	18,0		M72 x 2,0	500	4700
				M72 x 3,0		
				M76 x 6,0		
85,0	95,0	18,0			500	4850
110,0	130,0	17,5		R 4"	500	41101



PLUGS > Taper plugs

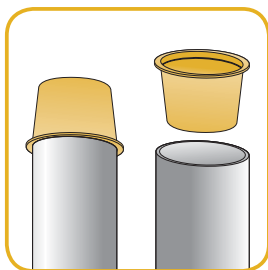


242

> Protects from dirt and damage.

> Polyethylene (PE) resists acids, greases and oils...

> $d3 = d1$ minus 2 to 3 mm depending on the model.



d1	d2	D	h	For thread	Unit of sale	Part N°
4,4	6,1	10,0	10,0	M7 M6 x 0,5	1 000	601
6,0	7,7	11,0	10,0	M9	1 000	602
7,6	9,3	13,0	10,0	M10 x 0,75	1 000	603
8,4	10,1	14,0	10,0	M11 x 1,0 R 1/8"	1 000	604
9,2	10,9	14,0	10,0	M12 x 1,25	1 000	605
9,9	11,6	15,0	10,0		1 000	606
10,6	12,3	16,0	10,0	M14	1 000	607
11,2	13,0	17,0	10,0	M14 x 1,0 R 1/4"	1 000	608
12,0	14,1	18,0	12,0	M15 x 1,0	1 000	609
12,5	14,6	18,0	12,0	M16 x 1,5	1 000	610
13,4	15,5	19,0	12,0	R 1/4"	1 000	611
14,0	16,1	19,0	12,0	M17 x 1,0 R 3/8"	1 000	612
				M18 x 2,0		
14,7	17,0	21,0	13,0	M18 x 1,0	1 000	613
16,3	18,6	22,0	13,0	M20 M20 x 1,5	1 000	614
17,0	19,5	22,0	13,0	M22	1 000	615
17,5	20,0	24,0	15,0	M22 x 2,0 R 1/2"	1 000	616
18,5	21,0	25,0	15,0	M24 M22 x 1,0	1 000	617
19,0	21,5	25,0	15,0		1 000	618
20,5	23,3	27,0	16,0	M24 x 0,75 R 5/8"	1 000	619
				M25 x 2,0		
20,7	23,5	28,0	16,0	M25 x 1,5	1 000	620
22,0	24,8	29,0	16,0		1 000	621
23,1	26,4	30,0	18,0	M30 M28 x 1,5 R 3/4"	1 000	622
24,4	27,7	32,0	19,0		1 000	623
26,4	29,2	33,0	19,0	M33 M30 x 1,0 R 7/8"	1 000	624
27,7	31,2	35,0	19,0	M33 x 2,0	1 000	625
29,8	32,6	37,0	16,0	M34 x 1,5 R 1"	1 000	626
31,3	35,0	38,0	21,0		1 000	627
33,3	37,1	41,0	22,0	M39 x 2,0 R 1 1/8"	1 000	628
				M40 x 3,0		
36,7	40,5	45,0	22,0	M45 M42 x 1,5	1 000	629
39,0	42,5	48,0	23,0		1 000	630
39,6	42,9	48,0	19,0	M48 M45 x 2,0 R 1 3/8"	1 000	631
41,4	44,7	49,0	19,0		1 000	632
44,3	46,9	51,0	19,0	M50 x 3,0 R 1 1/2"	1 000	633

MATERIALS - COLOURS

STANDARD :

- LD - Yellow PE / LD - Natural PE.
Minimum quantity for natural :
5 000 pieces.

ON REQUEST :

- Blue / Red / Grey / Green / Black.
Minimum quantity on request :
≈ 20 000 pieces depending on dimension.
- Colours : see RAL colour chart page 510 / 511.



243



Natural



Blue



Red



Grey

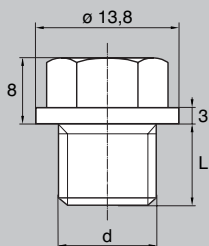


Green



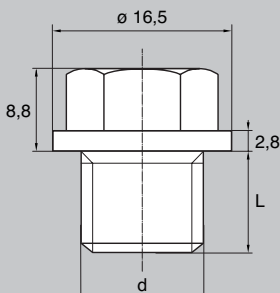
Black





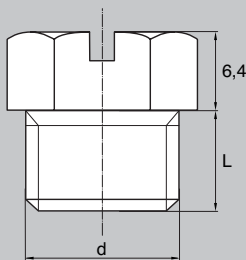
Hex head = A/F 10

d	Pitch	L	Unit of sale	Part N°
M5	0,8	8	1 000	BPE180508
M6	0,75	8	1 000	BPE1806075
M6	1,0	8	1 000	BPE18061
M8	1,0	8	1 000	BPE18081
M8	1,25	8	1 000	BPE1808125
M10	1,0	10	1 000	BPE180101
M10	1,5	10	1 000	BPE1801015
M12	1,0	10	1 000	BPE180121
M12	1,5	10	1 000	BPE1801215
M12	1,75	10	1 000	BPE18012175



Hex head = A/F 13

d	Pitch	L	Unit of sale	Part N°
M5	0,8	8	1 000	BPE186508
M6	0,75	8	1 000	BPE1866075
M6	1,0	8	1 000	BPE18661
M8	1,0	8	1 000	BPE18681
M8	1,25	8	1 000	BPE1868125
M10	1,0	10	1 000	BPE186101
M10	1,5	10	1 000	BPE1861015
M12	1,0	10	1 000	BPE186121
M12	1,5	10	1 000	BPE1861215
M12	1,75	10	1 000	BPE18612175



Hex head = A/F 16

d	Pitch	L	Unit of sale	Part N°
M5	0,8	8	1 000	BPE933508
M6	0,75	8	1 000	BPE9336075
M6	1,0	8	1 000	BPE93361
M8	1,0	8	1 000	BPE93381
M8	1,25	8	1 000	BPE9338125
M10	1,0	10	1 000	BPE933101
M10	1,5	10	1 000	BPE9331015
M12	1,0	10	1 000	BPE933121
M12	1,5	10	1 000	BPE9331215
M12	1,75	10	1 000	BPE93312175

MATERIALS - COLOURS

STANDARD :

- Yellow PE (≈ RAL 1018).

ON REQUEST :

- Blue PE / Red PE / Green PE / Black PE / Grey PE / White PE.

Any other colour on request.

Minimum quantity : 20 000 pieces per colour.

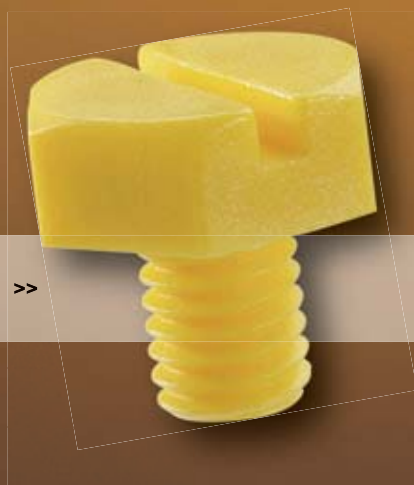
- Colours : see RAL colour chart page 510 / 511.



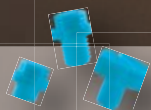
Hex washer faced plug >>
BPE 180



<< Hex washer faced plug
BPE 186



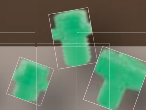
Hex head slotted plug >>
BPE 933



Blue PE



Red PE



Green PE



Black PE

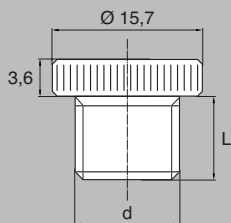


Grey PE

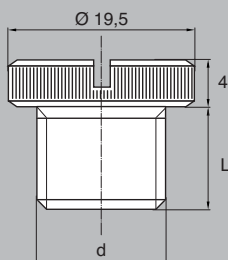


White PE

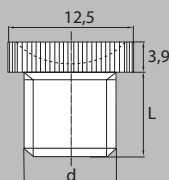




d	Pitch	L	Unit of sale	Part N°
M5	0,8	8	1 000	BPE652508
M6	0,75	8	1 000	BPE6526075
M6	1,0	8	1 000	BPE65261
M8	1,0	8	1 000	BPE65281
M8	1,25	8	1 000	BPE6528125
M10	1,0	10	1 000	BPE652101
M10	1,5	10	1 000	BPE6521015
M12	1,0	10	1 000	BPE652121
M12	1,5	10	1 000	BPE6521215
M12	1,75	10	1 000	BPE65212175



d	Pitch	L	Unit of sale	Part N°
M5	0,8	8	1 000	BPE654508
M6	0,75	8	1 000	BPE6546075
M6	1,0	8	1 000	BPE65461
M8	1,0	8	1 000	BPE65481
M8	1,25	8	1 000	BPE6548125
M10	1,0	10	1 000	BPE654101
M10	1,5	10	1 000	BPE6541015
M12	1,0	10	1 000	BPE654121
M12	1,5	10	1 000	BPE6541215
M12	1,75	10	1 000	BPE65412175



d	Pitch	L	Unit of sale	Part N°
M5	0,8	8	1 000	BPE656508
M6	0,75	8	1 000	BPE6566075
M6	1,0	8	1 000	BPE65661
M8	1,0	8	1 000	BPE65681
M8	1,25	8	1 000	BPE6568125
M10	1,0	10	1 000	BPE656101
M10	1,5	10	1 000	BPE6561015
M12	1,0	10	1 000	BPE656121
M12	1,5	10	1 000	BPE6561215
M12	1,75	10	1 000	BPE65612175

MATERIALS - COLOURS

STANDARD :

- Yellow PE (≈ RAL 1018).

ON REQUEST :

- Blue PE / Red PE / Green PE / Black PE / Grey PE / White PE.

Any other colour on request.

Minimum quantity : 20 000 pieces per colour.

- Colours : see RAL colour chart page 510 / 511.

Knurled plug **BPE 652** >>



<< Knurled slotted plug
BPE 654



Knurled slotted plug >>
BPE 656



Blue PE

Red PE

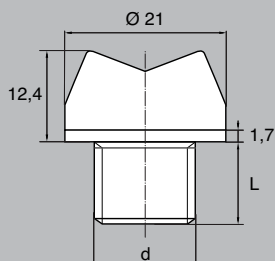
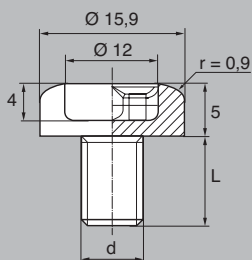
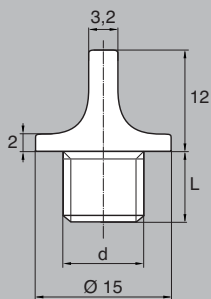
Green PE

Black PE

Grey PE

White PE





d	Pitch	L	Unit of sale	Part N°
M5	0,8	8	1 000	BPE147508
M6	0,75	8	1 000	BPE1476075
M6	1,0	8	1 000	BPE14761
M8	1,0	8	1 000	BPE14781
M8	1,25	8	1 000	BPE1478125
M10	1,0	10	1 000	BPE147101
M10	1,5	10	1 000	BPE1471015
M12	1,0	10	1 000	BPE147121
M12	1,5	10	1 000	BPE1471215
M12	1,75	10	1 000	BPE14712175

d	Pitch	L	Unit of sale	Part N°
M5	0,8	8	1 000	BPE157508
M6	0,75	8	1 000	BPE1576075
M6	1,0	8	1 000	BPE15761
M8	1,0	8	1 000	BPE15781
M8	1,25	8	1 000	BPE1578125
M10	1,0	10	1 000	BPE157101
M10	1,5	10	1 000	BPE1571015
M12	1,0	10	1 000	BPE157121
M12	1,5	10	1 000	BPE1571215
M12	1,75	10	1 000	BPE15712175

d	Pitch	L	Unit of sale	Part N°
M5	0,8	8	1 000	BPE207508
M6	0,75	8	1 000	BPE2076075
M6	1,0	8	1 000	BPE20761
M8	1,0	8	1 000	BPE20781
M8	1,25	8	1 000	BPE2078125
M10	1,0	10	1 000	BPE207101
M10	1,5	10	1 000	BPE2071015
M12	1,0	10	1 000	BPE207121
M12	1,5	10	1 000	BPE2071215
M12	1,75	10	1 000	BPE20712175



MATERIALS - COLOURS

STANDARD :

- Yellow PE (≈ RAL 1018).

ON REQUEST :

- Blue PE / Red PE / Green PE / Black PE / Grey PE / White PE.
Any other colour on request.
Minimum quantity : 20 000 pieces per colour.
- Colours : see RAL colour chart page 510 / 511.

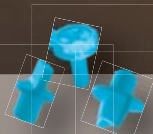
Violin head plug >>
BPE 147



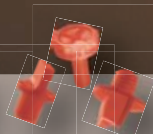
<< Slotted plug
BPE 157



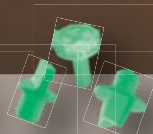
Universal plug >>
BPE 207



Blue PE



Red PE



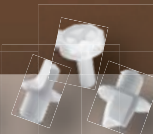
Green PE



Black PE



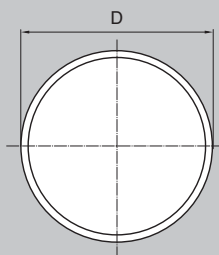
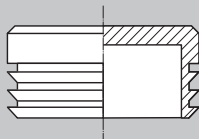
Grey PE



White PE



PLUGS > Round hole plugs for tubes



D	Wall thickness	Unit of sale	Part N°
10,0	0,8 - 1,5	500	BPT10E0,8 - 1,5
12,0	0,8 - 2,0	500	BPT12E0,8 - 2,0
12,0	2,5 - 3,0	500	BPT12E2,5 - 3,0
13,0	0,8 - 2,0	500	BPT13E0,8 - 2,0
13,0	2,0 - 2,5	500	BPT13E2,0 - 2,5
13,0	3,0 - 3,5	500	BPT13E3,0 - 3,5
14,0	0,8 - 2,0	500	BPT14E0,8 - 2,0
14,0	2,0 - 2,5	500	BPT14E2,0 - 2,5
14,0	2,5 - 3,0	500	BPT14E2,5 - 3,0
14,0	3,5 - 4,0	500	BPT14E3,5 - 4,0
15,0	0,8 - 2,0	500	BPT15E0,8 - 2,0
15,0	2,0 - 2,5	500	BPT15E2,0 - 2,5
15,0	2,5 - 3,0	500	BPT15E2,5 - 3,0
15,0	3,0 - 3,5	500	BPT15E3,0 - 3,5
15,0	4,0 - 4,5	500	BPT15E4,0 - 4,5
16,0	0,8 - 2,0	500	BPT16E0,8 - 2,0
16,0	2,0 - 2,5	500	BPT16E2,0 - 2,5
18,0	0,25 - 1,5	500	BPT18E0,25 - 1,5
18,0	0,8 - 2,5	500	BPT18E0,8 - 2,5
18,0	2,5 - 3,0	500	BPT18E2,5 - 3,0
18,0	3,0 - 3,5	500	BPT18E3,0 - 3,5
19,0	0,8 - 2,5	500	BPT19E0,8 - 2,5
20,0	0,8 - 2,5	500	BPT20E0,8 - 2,5
20,0	3,5 - 4,0	500	BPT20E3,5 - 4,0
21,0	0,8 - 2,0	500	BPT21E0,8 - 2,0

250

> Polyethylene (PE) resists acids, greases and oils...

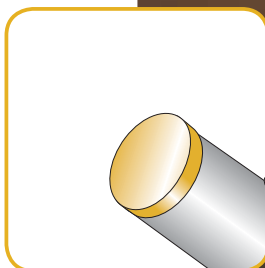
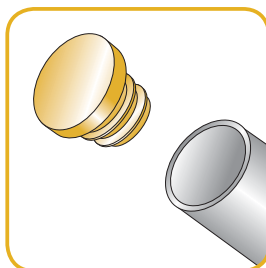
> Easy fitting.

> The ribs keep the plug in place.

> Half-round model (BPTR...) and shallow model (BPTF...) on request.

> N.B. : depending on the mould, the surface of the part can be smooth or dull.

→ Continued next page.



MATERIALS - COLOURS

STANDARD :

- Black PE / White PE / Grey PE RAL 7042.
- Minimum quantity for white and grey colours :
1 000 pieces up to \varnothing 50 mm,
over : on request.

ON REQUEST :

- Natural PE / Grey PE / Blue PE / Red PE / Yellow PE / Green PE.
- Any other colour on request.
- Minimum quantity on request.
- Colours : see RAL colour chart page 510 / 511.



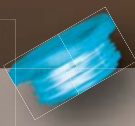
251



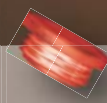
White PE



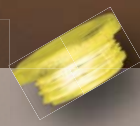
Grey PE



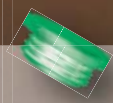
Blue PE



Red PE



Yellow PE



Green PE



PLUGS > Round hole plugs for tubes

252

D	Wall thickness	Unit of sale	Part N°
21,0	2,0 - 2,5	500	BPT21E2,0 - 2,5
21,0	2,5 - 3,0	500	BPT21E2,5 - 3,0
22,0	0,5 - 1,0	500	BPT22E0,5 - 1,0
22,0	0,8 - 3,0	500	BPT22E0,8 - 3,0
22,0	1,8 - 3,5	500	BPT22E1,8 - 3,5
22,0	4,5 - 5,0	500	BPT22E4,5 - 5,0
23,0	0,8 - 2,5	500	BPT23E0,8 - 2,5
23,0	2,5 - 3,0	500	BPT23E2,5 - 3,0
23,0	3,0 - 3,5	500	BPT23E3,0 - 3,5
23,0	3,5 - 4,0	500	BPT23E3,5 - 4,0
24,0	1,0 - 2,5	500	BPT24E1,0 - 2,5
24,0	2,5 - 3,0	500	BPT24E2,5 - 3,0
24,0	3,0 - 3,5	500	BPT24E3,0 - 3,5
24,0	3,5 - 4,0	500	BPT24E3,5 - 4,0
24,0	4,0 - 4,5	500	BPT24E4,0 - 4,5
25,0	0,5 - 1,0	500	BPT25E0,5 - 1,0
25,0	1,0 - 3,0	500	BPT25E1,0 - 3,0
25,0	1,5 - 2,0	500	BPT25E1,5 - 2,0
25,0	3,0 - 3,5	500	BPT25E3,0 - 3,5
25,0	3,5 - 4,0	500	BPT25E3,5 - 4,0
25,0	4,0 - 4,5	500	BPT25E4,0 - 4,5
25,0	4,5 - 5,0	500	BPT25E4,5 - 5,0
25,0	6,0 - 6,5	500	BPT25E6,0 - 6,5
26,0	1,0 - 3,0	500	BPT26E1,0 - 3,0
27,0	1,0 - 3,0	500	BPT27E1,0 - 3,0
28,0	0,8 - 2,5	500	BPT28E0,8 - 2,5
28,0	2,5 - 3,0	500	BPT28E2,5 - 3,0
28,0	3,0 - 3,5	500	BPT28E3,0 - 3,5
30,0	0,8 - 2,5	500	BPT30E0,8 - 2,5
30,0	2,5 - 4,5	500	BPT30E2,5 - 4,5
32,0	0,8 - 2,5	500	BPT32E0,8 - 2,5
32,0	2,5 - 4,5	500	BPT32E2,5 - 4,5
32,0	3,5 - 5,5	500	BPT32E3,5 - 5,5
34,0	0,5 - 1,0	500	BPT34E0,5 - 1,0
34,0 (33,7)	1,0 - 3,0	500	BPT34E1,0 - 3,0
34,0	3,0 - 3,5	500	BPT34E3,0 - 3,5
34,0	3,5 - 4,0	500	BPT34E3,5 - 4,0
34,0	5,0 - 5,5	500	BPT34E5,0 - 5,5
34,0	5,5 - 6,0	500	BPT34E5,5 - 6,0
34,0	6,0 - 6,5	500	BPT34E6,0 - 6,5

D	Wall thickness
35,0	0,5 - 1,0
35,0	1,0 - 3,0
35,0	2,5 - 4,5
35,0	5,0 - 5,5
35,0	5,5 - 6,0
35,0	6,0 - 6,5
35,0	6,5 - 7,0
36,0	0,5 - 1,0
36,0	1,0 - 3,0
36,0	3,5 - 4,0
36,0	4,0 - 4,5
36,0	4,5 - 5,0
36,0	5,5 - 6,0
36,0	6,0 - 6,5
36,0	6,5 - 7,0
37,0	1,0 - 3,0
37,0	3,0 - 3,5
37,0	4,0 - 4,5
37,0	4,5 - 5,0
37,0	5,0 - 5,5
38,0	0,5 - 1,0
38,0	1,0 - 3,5
38,0	3,0 - 5,0
38,0	5,0 - 5,5
38,0	5,5 - 6,0
38,0	6,5 - 7,0
40,0	0,5 - 1,0
40,0	1,0 - 3,0
40,0	3,0 - 3,5
40,0	3,5 - 4,0
40,0	4,0 - 4,5
40,0	4,5 - 5,0
40,0	5,5 - 6,0
40,0	6,0 - 6,5
42,0	0,8 - 2,5
42,0	2,0 - 4,0
43,0	2,0 - 2,5
43,0	3,0 - 3,5
45,0	0,8 - 3,5
45,0	3,0 - 5,0



White PE



Grey PE



Blue PE



Red PE



Yellow PE

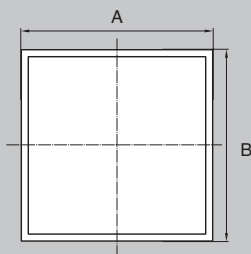
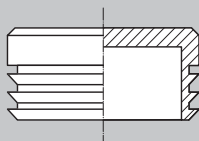


Green PE

Unit of sale	Part N°
500	BPT35E0,5 - 1,0
500	BPT35E1,0 - 3,0
500	BPT35E2,5 - 4,5
500	BPT35E5,0 - 5,5
500	BPT35E5,5 - 6,0
500	BPT35E6,0 - 6,5
500	BPT35E6,5 - 7,0
500	BPT36E0,5 - 1,0
500	BPT36E1,0 - 3,0
500	BPT36E3,5 - 4,0
500	BPT36E4,0 - 4,5
500	BPT36E4,5 - 5,0
500	BPT36E5,5 - 6,0
500	BPT36E6,0 - 6,5
500	BPT36E6,5 - 7,0
500	BPT37E1,0 - 3,0
500	BPT37E3,0 - 3,5
500	BPT37E4,0 - 4,5
500	BPT37E4,5 - 5,0
500	BPT37E5,0 - 5,5
500	BPT38E0,5 - 1,0
500	BPT38E1,0 - 3,5
500	BPT38E3,0 - 5,0
500	BPT38E5,0 - 5,5
500	BPT38E5,5 - 6,0
500	BPT38E6,5 - 7,0
500	BPT40E0,5 - 1,0
500	BPT40E1,0 - 3,0
500	BPT40E3,0 - 3,5
500	BPT40E3,5 - 4,0
500	BPT40E4,0 - 4,5
500	BPT40E4,5 - 5,0
500	BPT40E5,5 - 6,0
500	BPT40E6,0 - 6,5
500	BPT42E0,8 - 2,5
500	BPT42E2,0 - 4,0
500	BPT43E2,0 - 2,5
500	BPT43E3,0 - 3,5
500	BPT45E0,8 - 3,5
500	BPT45E3,0 - 5,0

D	Wall thickness	Unit of sale	Part N°
45,0	5,0 - 5,5	500	BPT45E5,0 - 5,5
46,0	1,5 - 3,5	500	BPT46E1,5 - 3,5
48,3 (1 1/2")	1,2 - 3,6	100	BPT48,3E1,2 - 3,6
48,3 (1 1/2")	2,5 - 5,2	100	BPT48,3E2,5 - 5,2
50,0	0,5 - 1,2	100	BPT50E0,5 - 1,2
50,0	1,0 - 2,5	100	BPT50E1,0 - 2,5
50,0	2,5 - 4,5	100	BPT50E2,5 - 4,5
50,0	3,3 - 6,0	100	BPT50E3,3 - 6,0
50,0	7,5 - 8,0	100	BPT50E7,5 - 8,0
52,0	1,5 - 3,5	100	BPT52E1,5 - 3,5
55,0	1,0 - 3,0	100	BPT55E1,0 - 3,0
55,0	3,0 - 5,0	100	BPT55E3,0 - 5,0
60,0	1,5 - 3,0	100	BPT60E1,5 - 3,0
60,0	4,0 - 4,5	100	BPT60E4,0 - 4,5
60,0	4,5 - 5,0	100	BPT60E4,5 - 5,0
65,0	1,5 - 3,5	100	BPT65E1,5 - 3,5
70,0	2,0 - 4,5	100	BPT70E2,0 - 4,5
75,0	1,0 - 3,5	100	BPT75E1,0 - 3,5
76,1 (2 1/2")	1,6 - 4,0	100	BPT76,1E1,6 - 4,0
80,0	1,5 - 3,0	100	BPT80E1,5 - 3,0
85,0	1,5 - 4,0	100	BPT85E1,5 - 4,0
90,0	2,5 - 5,0	100	BPT90E2,5 - 5,0
95,0	1,5 - 4,0	100	BPT95E1,5 - 4,0
100,0	2,0 - 4,5	100	BPT100E2,0 - 4,5
102,0	2,0 - 4,0	100	BPT102E2,0 - 4,0
105,0	2,0 - 4,5	100	BPT105E2,0 - 4,5
108,0	2,9 - 5,0	100	BPT108E2,9 - 5,0
110,0	2,0 - 4,5	100	BPT110E2,0 - 4,5
114,3 (4")	3,2 - 5,5	100	BPT114,3E3,2 - 5,5
120,0	2,0 - 4,0	100	BPT120E2,0 - 4,0
125,0	2,0 - 6,0	100	BPT125E2,0 - 6,0
130,0	2,0 - 6,0	100	BPT130E2,0 - 6,0
133,0	2,0 - 6,0	100	BPT133E2,0 - 6,0
140,0	2,0 - 6,5	100	BPT140E2,0 - 6,5
150,0	2,0 - 7,0	100	BPT150E2,0 - 7,0
159,0	2,0 - 6,5	100	BPT159E2,0 - 6,5
160,0	2,5 - 7,0	100	BPT160E2,5 - 7,0
168,3	2,0 - 6,5	100	BPT168,3E2,0 - 6,5
193,7 (194)	2,9 - 8,0	100	BPT193,7E2,9 - 8,0

PLUGS > Square hole plugs for tubes



A x B	Wall thickness	Unit of sale	Part N°
10 x 10		500	BPT1010
12 x 12		500	BPT1212
13 x 13		500	BPT1313
13 x 13	0,5 - 1,0	500	BPT1313E0,5 - 1,0
15 x 15	0,8 - 2,0	500	BPT1515E0,8 - 2,0
16 x 16	1,0 - 2,5	500	BPT1616E1,0 - 2,5
18 x 18	0,5 - 1,0	500	BPT1818E0,5 - 1,0
18 x 18	1,5 - 2,0	500	BPT1818E1,5 - 2,0
18 x 18	1,5 - 3,0	500	BPT1818E1,5 - 3,0
18 x 18	3,0 - 3,5	500	BPT1818E3,0 - 3,5
20 x 20	0,8 - 3,0	500	BPT2020E0,8 - 3,0
20 x 20 A	1,0	500	BPT2020E1,0
20 x 20	1,5 - 2,0	500	BPT2020E1,5 - 2,0
20 x 20	3,5 - 4,0	500	BPT2020E3,5 - 4,0
20 x 20	4,0 - 4,5	500	BPT2020E4,0 - 4,5
22 x 22	1,0 - 3,5	500	BPT2222E1,0 - 3,5
22 x 22	3,5 - 4,0	500	BPT2222E3,5 - 4,0
22 x 22	4,5 - 5,0	500	BPT2222E4,5 - 5,0
22 x 22	5,0 - 5,5	500	BPT2222E5,0 - 5,5
25 x 25	1,0 - 3,0	500	BPT2525E1,0 - 3,0
25 x 25	1,5 - 2,0	500	BPT2525E1,5 - 2,0
25 x 25	3,0 - 3,5	500	BPT2525E3,0 - 3,5
25 x 25	4,0 - 4,5	500	BPT2525E4,0 - 4,5
25 x 25	5,0 - 5,5	500	BPT2525E5,0 - 5,5
28 x 28	1,0 - 3,0	500	BPT2828E1,0 - 3,0

254

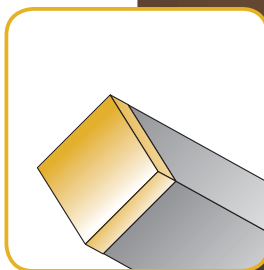
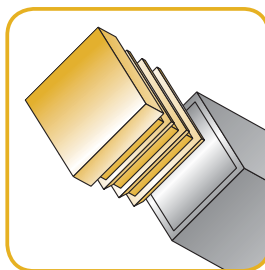
> Polyethylene (PE) resists acids, greases and oils...

> Easy fitting.

> The ribs keep the plug in place.

> N.B. : depending on the mould, the surface of the part can be smooth or dull.

→ Continued next page.



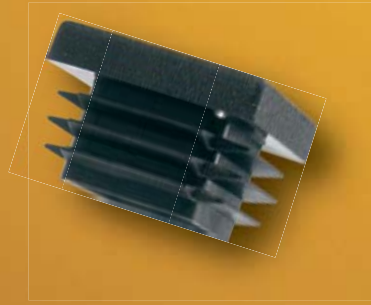
MATERIALS - COLOURS

STANDARD :

- Black PE / White PE / Grey PE RAL 7042.
- Minimum quantity for white and grey colours : 1 000 pieces up to 50 x 50, over : on request.

ON REQUEST :

- Natural PE / Grey PE / Blue PE / Red PE / Yellow PE / Green PE.
- Any other colour on request.
- Minimum quantity on request.
- Colours : see RAL colour chart page 510 / 511.



255



White PE



Grey PE



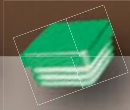
Blue PE



Red PE



Yellow PE



Green PE



PLUGS > Square hole plugs for tubes

A x B	Wall thickness	Unit of sale	Part N°
30 x 30	1,0 - 2,5	500	BPT3030E1,0 - 2,5
30 x 30	1,5 - 2,0	500	BPT3030E1,5 - 2,0
30 x 30	2,5 - 4,5	500	BPT3030E2,5 - 4,5
32 x 32	1,0 - 3,5	500	BPT3232E1,0 - 3,5
34 x 34	1,0 - 3,0	500	BPT3434E1,0 - 3,0
35 x 35	1,0 - 3,0	500	BPT3535E1,0 - 3,0
35 x 35	2,5 - 5,0	500	BPT3535E2,5 - 5,0
38 x 38	1,0 - 3,5	500	BPT3838E1,0 - 3,5
40 x 40	1,0 - 3,0	500	BPT4040E1,0 - 3,0
40 x 40	1,5 - 3,0	500	BPT4040E1,5 - 3,0
40 x 40	5,0 - 5,5	500	BPT4040E5,0 - 5,5
45 x 45	1,0 - 3,0	500	BPT4545E1,0 - 3,0
45 x 45	3,5 - 4,0	500	BPT4545E3,5 - 4,0
45 x 45	4,0 - 4,5	500	BPT4545E4,0 - 4,5
50 x 50	0,8 - 2,5	100	BPT5050E0,8 - 2,5
50 x 50	1,5 - 4,0	100	BPT5050E1,5 - 4,0
50 x 50	2,6 - 4,0	100	BPT5050E2,6 - 4,0
50 x 50	3,5 - 6,0	100	BPT5050E3,5 - 6,0
52 x 52	1,5 - 3,5	100	BPT5252E1,5 - 3,5
55 x 55	2,0 - 4,5	100	BPT5555E2,0 - 4,5
60 x 60	1,5 - 3,5	100	BPT6060E1,5 - 3,5
60 x 60	2,6 - 4,0	100	BPT6060E2,6 - 4,0
65 x 65	2,0 - 4,5	100	BPT6565E2,0 - 4,5
70 x 70	2,4 - 4,0	100	BPT7070E2,4 - 4,0
70 x 70	3,6 - 5,0	100	BPT7070E3,6 - 5,0
70 x 70	2,0 - 4,5	100	BPT7070E2,0 - 4,5
75 x 75	2,0 - 4,5	100	BPT7575E2,0 - 4,5
80 x 80	2,0 - 4,0	100	BPT8080E2,0 - 4,0
80 x 80	2,9 - 5,0	100	BPT8080E2,9 - 5,0
90 x 90	3,0 - 5,0	100	BPT9090E3,0 - 5,0
95 x 95	3,5 - 5,5	100	BPT9595E3,5 - 5,5
100 x 100	1,0 - 4,0	100	BPT100100E1,0 - 4,0
100 x 100	5,0 - 8,0	100	BPT100100E5,0 - 8,0
110 x 110	3,0 - 5,0	100	BPT110110E3,0 - 5,0
120 x 120	2,5 - 5,0	100	BPT120120E2,5 - 5,0
140 x 140	4,0 - 7,0	100	BPT140140E4,0 - 7,0
150 x 150	5,0 - 8,0	100	BPT150150E5,0 - 8,0
150 x 150	10,0 - 12,5	100	BPT150150E10,0 - 12,5





White PE



Grey PE



Blue PE



Red PE



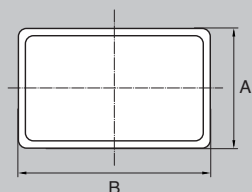
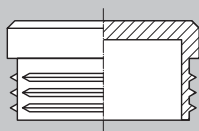
Yellow PE



Green PE



PLUGS > Rectangular hole plugs for tubes



A x B	Wall thickness	Unit of sale	Part N°
10 x 20	0,75 - 2,0	500	BPT1020E0,75 - 2,0
10 x 25	0,75 - 2,0	500	BPT1025E0,75 - 2,0
10 x 30	0,75 - 2,0	500	BPT1030E0,75 - 2,0
10 x 35	0,75 - 2,0	500	BPT1035E0,75 - 2,0
10 x 40		500	BPT1040
10 x 50	0,75 - 2,0	500	BPT1050E0,75 - 2,0
12 x 20	1,0 - 1,5	500	BPT1220E1,0 - 1,5
15 x 20	1,0 - 1,5	500	BPT1520E1,0 - 1,5
15 x 20	1,0 - 2,0	500	BPT1520E1,0 - 2,0
15 x 25	0,8 - 2,5	500	BPT1525E0,8 - 2,5
15 x 30	0,75 - 2,5	500	BPT1530E0,75 - 2,5
15 x 30	1,0 - 2,0	500	BPT1530E1,0 - 2,0
15 x 35	1,0 - 3,0	500	BPT1535E1,0 - 3,0
15 x 40	1,0 - 2,0	500	BPT1540E1,0 - 2,0
15 x 45	1,0 - 2,0	500	BPT1545E1,0 - 2,0
15 x 60	1,0 - 2,0	500	BPT1560E1,0 - 2,0
16 x 20	1,0 - 2,0	500	BPT1620E1,0 - 2,0
20 x 25	1,0 - 3,0	500	BPT2025E1,0 - 3,0
20 x 30	1,0 - 2,0	500	BPT2030E1,0 - 2,0
20 x 30	1,0 - 3,0	500	BPT2030E1,0 - 3,0
20 x 35	1,0 - 2,5	500	BPT2035E1,0 - 2,5
20 x 40	1,0 - 2,5	500	BPT2040E1,0 - 2,5
20 x 40	1,5 - 2,0	500	BPT2040E1,5 - 2,0
20 x 45	1,0 - 3,0	500	BPT2045E1,0 - 3,0
20 x 50	1,0 - 3,0	100	BPT2050E1,0 - 3,0
20 x 60	1,0 - 3,0	100	BPT2060E1,0 - 3,0

258

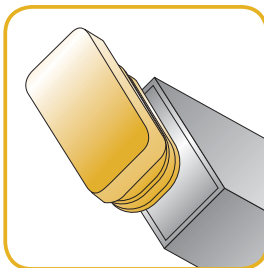
> Polyethylene (PE) resists acids, greases and oils...

> Easy fitting.

> The ribs keep the plug in place.

> N.B. : depending on the mould, the surface of the part can be smooth or dull.

→ Continued next page.



MATERIALS - COLOURS

STANDARD :

- Black PE / White PE / Grey PE RAL 7042.
- Minimum quantity for white and grey colours :
1 000 pieces ≈ depending on dimension.

ON REQUEST :

- Natural PE / Grey PE / Blue PE / Red PE / Yellow PE / Green PE.
- Any other colour on request.
- Minimum quantity on request.
- Colours : see RAL colour chart page 510 / 511.



259



White PE



Grey PE



Blue PE



Red PE



Yellow PE



Green PE



PLUGS > Rectangular hole plugs for tubes

A x B	Wall thickness	Unit of sale	Part N°
20 x 70	1,0 - 2,0	100	BPT2070E1,0 - 2,0
20 x 80	1,0 - 2,0	100	BPT2080E1,0 - 2,0
20 x 90	1,0 - 2,5	100	BPT2090E1,0 - 2,5
20 x 100	1,5 - 3,0	100	BPT20100E1,5 - 3,0
25 x 30	1,5	500	BPT2530E1,5
25 x 35	1,0 - 3,0	500	BPT2535E1,0 - 3,0
25 x 40	1,0 - 3,0	500	BPT2540E1,0 - 3,0
25 x 45	1,0 - 3,0	500	BPT2545E1,0 - 3,0
25 x 45	4 x R4	500	BPT2545E4xR4
25 x 50	0,8 - 3,0	100	BPT2550E0,8 - 3,0
25 x 50	3,0 - 4,5	100	BPT2550E3,0 - 4,5
25 x 60	1,0 - 2,5	100	BPT2560E1,0 - 2,5
25 x 70	1,0 - 2,0	100	BPT2570E1,0 - 2,0
25 x 75	1,0 - 3,0	100	BPT2575E1,0 - 3,0
25 x 80	1,0 - 3,0	100	BPT2580E1,0 - 3,0
25 x 100	1,5 - 3,0	100	BPT25100E1,5 - 3,0
27 x 40	1,5 - 2,0	100	BPT2740E1,5 - 2,0
30 x 40	1,0 - 3,0	100	BPT3040E1,0 - 3,0
30 x 45	1,0 - 2,5	100	BPT3045E1,0 - 2,5
30 x 50	1,0 - 3,0	100	BPT3050E1,0 - 3,0
30 x 50	3,0	100	BPT3050E3,0
30 x 60	1,0 - 2,5	100	BPT3060E1,0 - 2,5
30 x 70	1,0 - 2,0	100	BPT3070E1,0 - 2,0
30 x 80	2,5 - 4,0	100	BPT3080E2,5 - 4,0
30 x 80	1,0 - 2,5	100	BPT3080E1,0 - 2,5
30 x 100	1,5 - 3,5	100	BPT30100E1,5 - 3,5
30 x 120	1,0 - 2,5	100	BPT30120E1,0 - 2,5
33 x 60	1,5 - 3,5	100	BPT3360E1,5 - 3,5
34 x 50	1,0 - 3,5	100	BPT3450E1,0 - 3,5
34 x 55	1,5 - 4,0	100	BPT3455E1,5 - 4,0
35 x 40	1,0 - 3,0	100	BPT3540E1,0 - 3,0
35 x 45	1,0 - 3,5	100	BPT3545E1,0 - 3,5
35 x 50	1,0 - 3,5	100	BPT3550E1,0 - 3,5
35 x 60	1,5 - 3,5	100	BPT3560E1,5 - 3,5
35 x 65	1,0 - 3,0	100	BPT3565E1,0 - 3,0
35 x 70	1,5 - 3,5	100	BPT3570E1,5 - 3,5
40 x 50		100	BPT4050
40 x 50	1,5 x 4,0	100	BPT4050E1,5 - 4,0

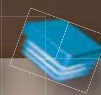
A x B	Wall thickness	Unit of sale
40 x 60	1,0 - 3,0	100
40 x 60	4,0 - 5,0	100
40 x 70	1,0 - 2,0	100
40 x 70	4,0	100
40 x 80	1,0 - 3,0	100
40 x 90	2,0 - 4,0	100
40 x 100	1,5 - 4,0	100
40 x 120	3,0 - 5,0	100
45 x 60	1,5 - 4,0	100
45 x 90	2,0 - 4,0	100
50 x 60	1,5 - 3,5	100
50 x 70	2,0 - 5,0	100
50 x 75	2,0 - 4,0	100
50 x 80	2,0 - 4,0	100
50 x 90	2,0 - 4,5	100
50 x 100	2,0 - 3,0	100
50 x 100	3,2 - 5,0	100
50 x 100	2,0 x 4,5	100
50 x 120	3,0 - 5,5	100
50 x 150	2,0 - 4,0	100
50 x 200	3,5	100
60 x 80	1,5 - 3,5	100
60 x 80	5,0	100
60 x 100	2,5 - 4,5	100
60 x 110	3,5 - 5,5	100
60 x 120	2,0 - 4,0	100
60 x 120	4,0	100
60 x 120	5,0	100
70 x 90	3,0 - 5,5	100
70 x 110	3,0 - 5,0	100
80 x 100	3,0 - 5,5	100
80 x 100	4,0 - 6,0	100
80 x 120	2,0 - 3,0	100
80 x 120	5,0 - 8,0	100
80 x 140	2,0 - 4,5	100
100 x 120	3,5 - 6,0	100
100 x 150	3,0 - 8,0	100
120 x 200	6,3	100



White PE



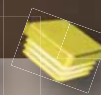
Grey PE



Blue PE



Red PE



Yellow PE



Green PE

Part N°

BPT4060E1,0 - 3,0

BPT4060E4,0 - 5,0

BPT4070E1,0 - 2,0

BPT4070E4,0

BPT4080E1,0 - 3,0

BPT4090E2,0 - 4,0

BPT40100E1,5 - 4,0

BPT40120E3,0 - 5,0

BPT4560E1,5 - 4,0

BPT4590E2,0 - 4,0

BPT5060E1,5 - 3,5

BPT5070E2,0 - 5,0

BPT5075E2,0 - 4,0

BPT5080E2,0 - 4,0

BPT5090E2,0 - 4,5

BPT50100E2,0 - 3,0

BPT50100E3,2 - 5,0

BPT50100E2,0 - 4,5

BPT50120E3,0 - 5,5

BPT50150E2,0 - 4,0

BPT50200E3,5

BPT6080E1,5 - 3,5

BPT6080E5,0

BPT60100E2,5 - 4,5

BPT60110E3,5 - 5,5

BPT60120E2,0 - 4,0

BPT60120E4,0

BPT60120E5,0

BPT7090E3,0 - 5,5

BPT70110E3,0 - 5,0

BPT80100E3,0 - 5,5

BPT80100E4,0 - 6,0

BPT80120E2,0 - 3,0

BPT80120E5,0 - 8,0

BPT80140E2,0 - 4,5

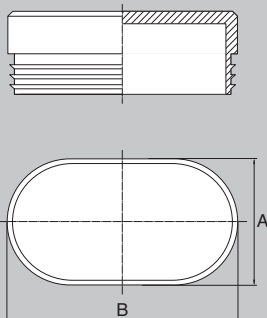
BPT100120E3,5 - 6,0

BPT100150E3,0 - 8,0

BPT120200E6,3



PLUGS > Oval hole plugs for tubes



A x B	Wall thickness	Unit of sale	Part N°
10 x 20	2,0	500	BPT01020E2,0
15 x 30	1,0 - 2,5	500	BPT01530E1,0 - 2,5
15 x 35	1,2 - 2,5	500	BPT01535E1,2 - 2,5
15 x 50	1,0 - 2,5	500	BPT01550E1,0 - 2,5
20 x 35	1,0 - 3,0	500	BPT02035E1,0 - 3,0
20 x 38	1,0 - 3,0	500	BPT02038E1,0 - 3,0
20 x 38	1,0 - 3,0	500	BPT02038E1,0 - 3,0 B*
20 x 40	1,0 - 3,0	500	BPT02040E1,0 - 3,0
20 x 48	1,0 - 2,5	500	BPT02048E1,0 - 2,5
20 x 50	1,0 - 3,0	500	BPT02050E1,0 - 3,0
20 x 60	1,0 - 2,0	500	BPT02060E1,0 - 2,0
25 x 50	1,0 - 2,5	500	BPT02550E1,0 - 2,5
25 x 50	1,0 - 2,5	500	BPT02550E1,0 - 2,5 B*
30 x 50	1,0 - 2,5	500	BPT03050E1,0 - 2,5
30 x 50	1,0 - 2,5	500	BPT03050E1,0 - 2,5 B*
30 x 60	1,0 - 2,0	500	BPT03060E1,0 - 2,0

B* = chambered top.

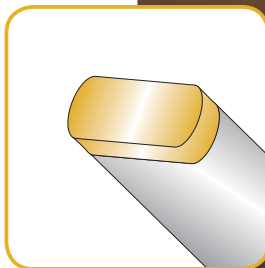
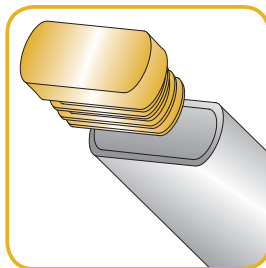
262

> Polyethylene (PE) resists acids, greases and oils...

> Easy fitting.

> The ribs keep the plug in place.

> N.B. : depending on the mould, the surface of the part can be smooth or dull.



MATERIALS - COLOURS

STANDARD :

- Black PE / White PE / Grey PE RAL 7042.
- Minimum quantity for white and grey colours :
1 000 pieces ≈ depending on dimension.

ON REQUEST :

- Natural PE / Grey PE / Blue PE / Red PE / Yellow PE / Green PE.
- Any other colour on request.
- Minimum quantity on request.
- Colours : see RAL colour chart page 510 / 511.



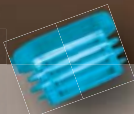
263



White PE



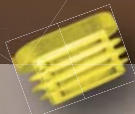
Grey PE



Blue PE



Red PE



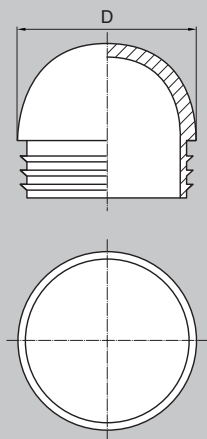
Yellow PE



Green PE



PLUGS > Round hole plugs for tubes with ball-head



D	Wall thickness	Unit of sale	Part N°
16	1,0 - 2,0	1 000	BPTR16E1,0 - 2,0
18	1,0 - 2,0	1 000	BPTR18E1,0 - 2,0
20	1,0 - 2,0	1 000	BPTR20E1,0 - 2,0
22	1,0 - 1,5	1 000	BPTR22E1,0 - 1,5
22	1,5 - 2,0	1 000	BPTR22E1,5 - 2,0
25	1,0 - 2,0	500	BPTR25E1,0 - 2,0
28	1,0 - 2,0	500	BPTR28E1,0 - 2,0
30	1,0 - 2,0	500	BPTR30E1,0 - 2,0
32	1,0 - 2,0	500	BPTR32E1,0 - 2,0
35	1,0 - 2,0	500	BPTR35E1,0 - 2,0
40	1,5 - 2,0	500	BPTR40E1,5 - 2,0
60	1,5 - 2,5	100	BPTR60E1,5 - 2,5

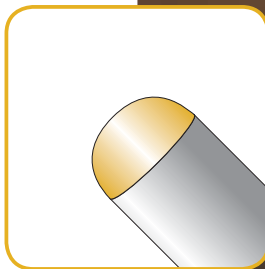
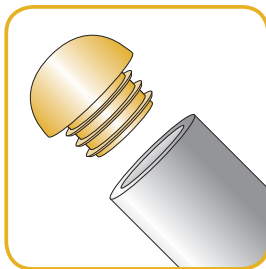
264

> Polyethylene (PE) resists acids, greases and oils...

> Easy fitting.

> The ribs keep the plug in place.

> N.B. : depending on the mould, the surface of the part can be smooth or dull.



MATERIALS - COLOURS

STANDARD :

- Black PE.

ON REQUEST :

- Natural PE / White PE / Grey PE / Blue PE / Red PE / Yellow PE / Green PE.
Minimum quantity on request (depending on dimension).
- Colours : see RAL colour chart page 510 / 511.



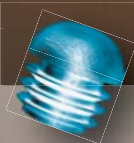
265



White PE



Grey PE



Blue PE



Red PE



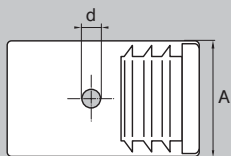
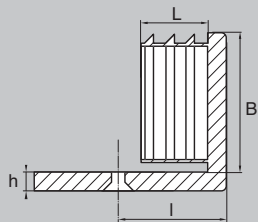
Yellow PE



Green PE



PLUGS > Hole plugs for tubes with angle glide



d = hole for countersunk head screw M5 - 90°.

A x B	Wall thickness	l	L	h	Unit of sale	Part N°
15 x 30	1,5 - 2,0	19,5	15,0	7,0	500	BPTG1530
20 x 20	1,5 - 2,0	24,5	15,0	5,0	500	BPTG2020
20 x 30	1,5 - 2,0	17,0	14,5	5,0	500	BPTG2030
20 x 35	1,5 - 2,0	25,5	15,0	5,0	500	BPTG2035
20 x 40	1,5 - 2,0	41,0	14,5	5,0	500	BPTG2040
20 x 50	1,5 - 2,0	-	14,5	5,0	500	BPTG2050*
25 x 25	1,5 - 2,0	14,0	19,5	5,0	500	BPTG2525
25 x 30	1,5 - 2,0	20,0	14,5	6,0	500	BPTG2530
25 x 35	1,5 - 2,0	-	14,5	5,0	500	BPTG2535*
25 x 40	1,5 - 2,0	31,0	14,5	5,0	500	BPTG2540
25 x 50	1,5 - 2,0	40,0	14,5	8,0	500	BPTG2550
30 x 30	1,5 - 2,0	20,0	26,5	5,0	500	BPTG3030
30 x 40	1,5 - 2,0	-	17,5	5,0	500	BPTG3040*
30 x 50	1,5 - 2,0	25,5	15,0	7,0	500	BPTG3050

* = No hole for fixing.



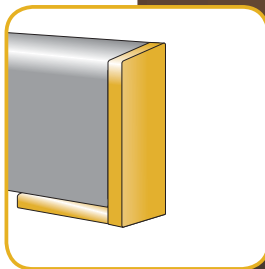
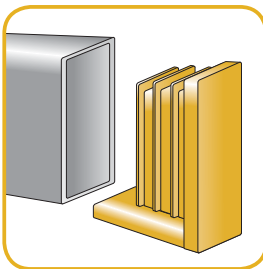
266

> Polyethylene (PE) resists acids, greases an oils...

> Easy fitting.

> The ribs keep the plug in place locked by the screw.

> N.B. : depending on the mould, the surface of the part can be smooth or dull.



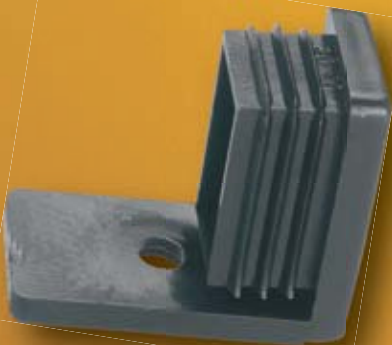
MATERIALS - COLOURS

STANDARD :

- Black PE / White PE.
Minimum quantity for white colour : 1 000 pieces.

ON REQUEST :

- Natural PE / Grey PE / Blue PE / Red PE / Yellow PE / Green PE.
Minimum quantity on request.
- Colours : see RAL colour chart page 510 / 511.



267



White PE



Grey PE



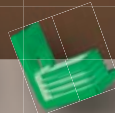
Blue PE



Red PE



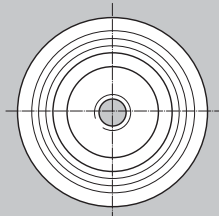
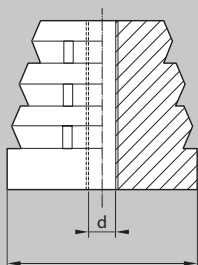
Yellow PE



Green PE



PLUGS > Threaded round hole plugs for tubes



D	Wall thickness	d	Unit of sale	Part N°
22,0	1,5 - 2,0	M8	100	BPT22BTARM8
25,0	1,5 - 2,0	M8	100	BPT25BTARM8
28,0	1,5 - 2,0	M8	100	BPT28BTARM8
30,0	1,5 - 2,0	M8	100	BPT30BTARM8
32,0	1,5 - 2,0	M8	100	BPT32BTARM8
35,0	1,5 - 2,0	M8	100	BPT35BTARM8
38,0	1,5 - 2,0	M8	100	BPT38BTARM8
40,0	1,5 - 2,0	M8	100	BPT40BTARM8
42,0	1,5 - 2,0	M8	100	BPT42BTARM8

22,0	1,5 - 2,0	M10	100	BPT22BTARM10
25,0	1,5 - 2,0	M10	100	BPT25BTARM10
28,0	1,5 - 2,0	M10	100	BPT28BTARM10
30,0	1,5 - 2,0	M10	100	BPT30BTARM10
32,0	1,5 - 2,0	M10	100	BPT32BTARM10
35,0	1,5 - 2,0	M10	100	BPT35BTARM10
38,0	1,5 - 2,0	M10	100	BPT38BTARM10
40,0	1,5 - 2,0	M10	100	BPT40BTARM10
42,0	1,5 - 2,0	M10	100	BPT42BTARM10

25,0	1,5 - 2,0	M12	100	BPT25BTARM12
28,0	1,5 - 2,0	M12	100	BPT28BTARM12
30,0	1,5 - 2,0	M12	100	BPT30BTARM12
32,0	1,5 - 2,0	M12	100	BPT32BTARM12
35,0	1,5 - 2,0	M12	100	BPT35BTARM12
38,0	1,5 - 2,0	M12	100	BPT38BTARM12
40,0	1,5 - 2,0	M12	100	BPT40BTARM12

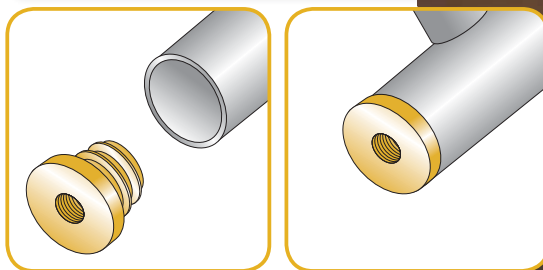
268

> Easy fitting.

> The ribs keep the plug in place.

> N.B. : maximum load : 300 kg.

> N.B. : depending on the mould, the surface of the part can be smooth or dull.



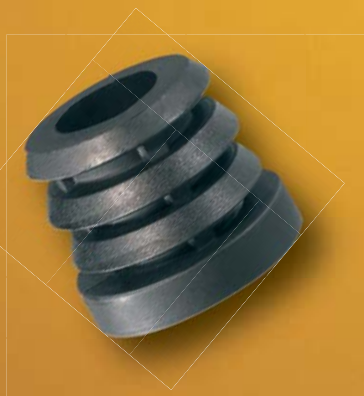
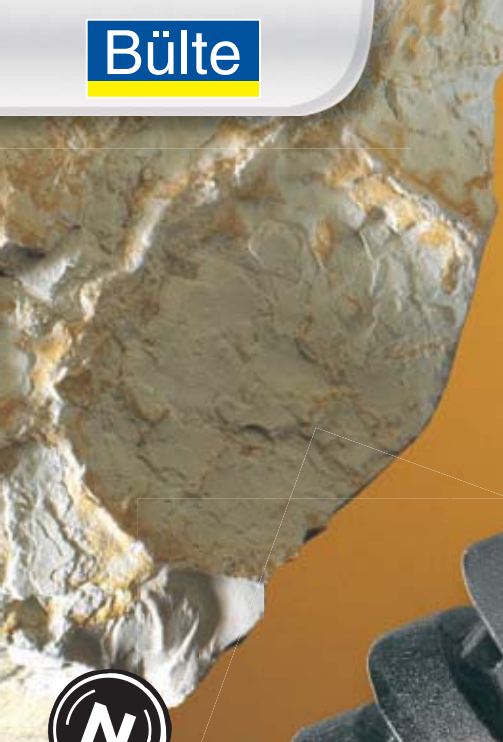
MATERIALS - COLOURS

STANDARD :

- Black Nylon.

ON REQUEST :

- White Nylon / Grey Nylon / Blue Nylon / Red Nylon / Yellow Nylon / Green Nylon.
Minimum quantity on request.
- Colours : see RAL colour chart page 510 / 511.



White Nylon



Grey Nylon



Blue Nylon



Red Nylon



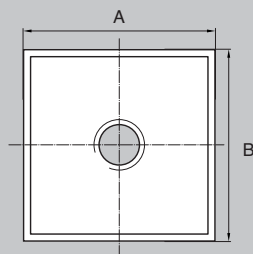
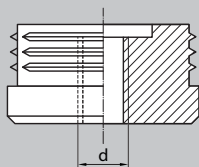
Yellow Nylon



Green Nylon



PLUGS > Thread square hole plugs for tubes



A x B	Wall thickness	d	Unit of sale	Part N°
20 x 20	1,5 - 2,0	M8	100	BPT2020BTARM8
22 x 22	1,5 - 2,0	M8	100	BPT2222BTARM8
25 x 25	1,5 - 2,0	M8	100	BPT2525BTARM8
30 x 30	1,5 - 2,0	M8	100	BPT3030BTARM8
35 x 35	1,5 - 2,0	M8	100	BPT3535BTARM8

20 x 20	1,5 - 2,0	M10	100	BPT2020BTARM10
22 x 22	1,5 - 2,0	M10	100	BPT2222BTARM10
25 x 25	1,5 - 2,0	M10	100	BPT2525BTARM10
30 x 30	1,5 - 2,0	M10	100	BPT3030BTARM10
35 x 35	1,5 - 2,0	M10	100	BPT3535BTARM10

25 x 25	1,5 - 2,0	M12	100	BPT2525BTARM12
30 x 30	1,5 - 2,0	M12	100	BPT3030BTARM12
35 x 35	1,5 - 2,0	M12	100	BPT3535BTARM12

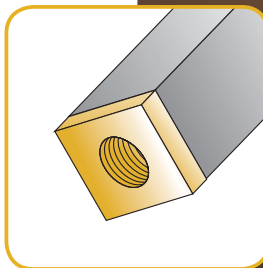
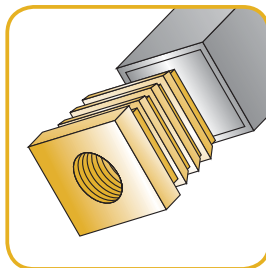
270

> Easy fitting.

> The ribs keep the plug in place.

> N.B. : maximum load : 300 kg.

> N.B. : depending on the mould, the surface of the part can be smooth or dull.



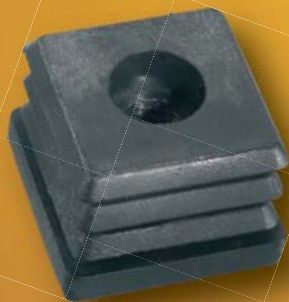
MATERIALS - COLOURS

STANDARD :

- Black Nylon.

ON REQUEST :

- White Nylon / Grey Nylon / Blue Nylon / Red Nylon / Yellow Nylon / Green Nylon.
Minimum quantity on request.
- Colours : see RAL colour chart page 510 / 511.



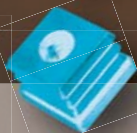
271



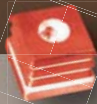
White Nylon



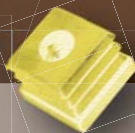
Grey Nylon



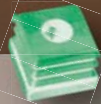
Blue Nylon



Red Nylon



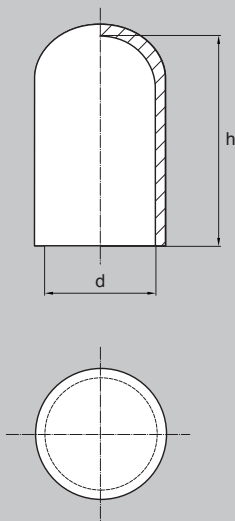
Yellow Nylon



Green Nylon



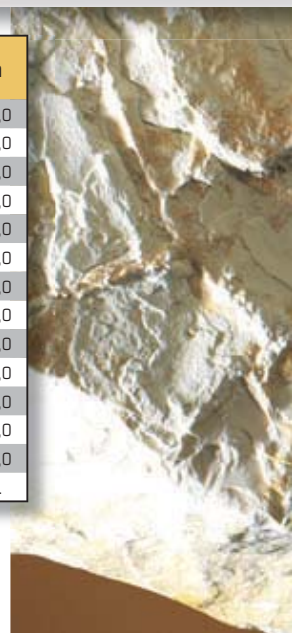
PLUGS > Soft PVC round protection caps



d	h
1,5	8,0
1,5	10,0
1,6	10,0
1,6	15,0
1,8	10,0
1,8	15,0
2,0	10,0
2,0	15,0
2,2	10,0
2,2	15,0
2,5	10,0
2,5	15,0
2,5	20,0
3,0	10,0
3,0	15,0
3,0	20,0
3,0	25,0
4,0	10,0
4,0	15,0
4,0	20,0
4,0	30,0
4,0	40,0
5,0	10,0
5,0	15,0
5,0	20,0
5,0	30,0

d	h
5,0	40,0
5,0	50,0
6,0	15,0
6,0	20,0
6,0	25,0
6,0	30,0
6,0	40,0
6,0	50,0
6,0	60,0
7,0	15,0
7,0	20,0
7,0	25,0
7,0	30,0
7,0	40,0
7,0	50,0
7,0	60,0
7,0	70,0
7,0	80,0

d	h
8,0	20,0
8,5	20,0
9,0	25,0
10,0	25,0
11,0	25,0
12,0	25,0
12,5	25,0
13,0	25,0
14,0	30,0
15,0	30,0
16,0	30,0
18,0	30,0
20,0	30,0
On request.	

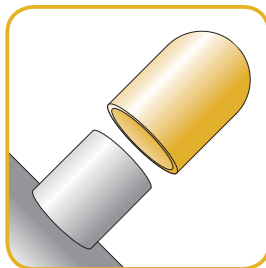


272

> Other dimensions (ø and length "h") on request.

> Unit of sale ≈ 1 000 pieces depending on the dimension.

> Example of part N° for the model d = 1.5 / h = 8.0 : caps 1.5 x 8.0 ...



MATERIALS - COLOURS

STANDARD :

- Black soft PVC ≈ 65° shore.

ON REQUEST :

- White / Grey / Red / Blue / Green / Yellow.
Any other colour on request.
Minimum quantity on request.



273



White



Grey



Red



Blue



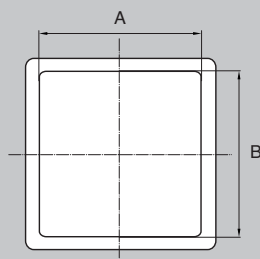
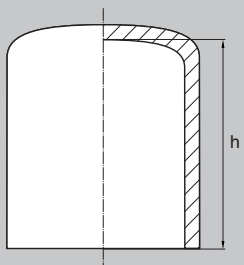
Green



Yellow



PLUGS > Soft PVC square protection caps



A	B	h
10,0	10,0	from 15,0 up to 40,0
11,0	11,0	from 25,0 up to 40,0
12,0	12,0	from 15,0 up to 40,0
14,0	14,0	from 30,0 up to 40,0
15,0	15,0	from 25,0 up to 60,0
20,0	20,0	from 30,0 up to 60,0
25,0	25,0	from 30,0 up to 40,0
30,0	30,0	from 40,0 up to 50,0
35,0	35,0	from 40,0 up to 50,0
40,0	40,0	from 40,0 up to 50,0
45,0	45,0	from 40,0 up to 50,0
50,0	50,0	from 40,0 up to 50,0
60,0	60,0	from 40,0 up to 50,0
65,0	65,0	from 40,0 up to 50,0
70,0	70,0	from 40,0 up to 50,0
80,0	80,0	from 40,0 up to 50,0
100,0	100,0	from 40,0 up to 50,0

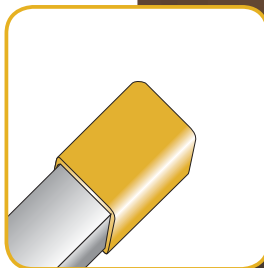
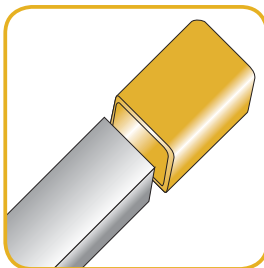


274

> Other dimensions and / or lengths (h) on request.

> Unit of sale \approx 1 000 pieces depending on the dimension.

> Example of part N° for the model
A = 10,0 / B = 10,0 / h = 15,0 :
caps 10,0 x 10,0 x 15,0...



MATERIALS - COLOURS

STANDARD :

- Black soft PVC \approx 65° shore.

ON REQUEST :

- White / Grey / Red / Blue / Green / Yellow.
Any other colour on request.
Minimum quantity on request.



275



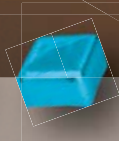
White



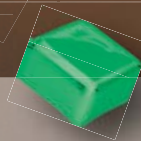
Grey



Red



Blue



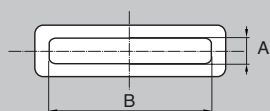
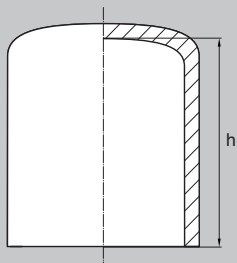
Green



Yellow

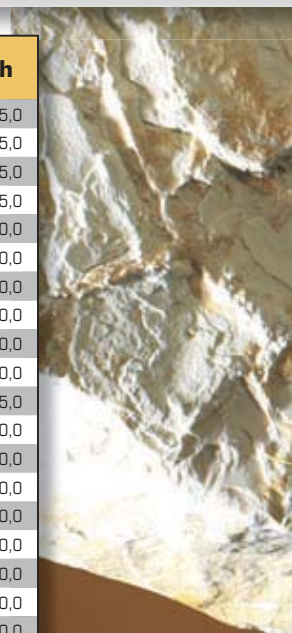


PLUGS > Soft PVC rectangular protection caps



A	B	h
1,5	10,0	15,0
1,5	15,0	15,0
2,0	8,0	15,0
2,0	14,0	15,0
2,0	16,0	20,0
2,0	18,0	20,0
2,0	20,0	20,0
2,0	24,0	20,0
2,0	30,0	20,0
2,5	13,0	20,0
2,5	19,0	20,0
3,0	10,0	15,0
3,0	12,0	15,0
3,0	15,0	20,0
3,0	20,0	25,0
3,0	25,0	25,0
4,0	8,0	15,0
4,0	12,0	20,0
4,0	18,0	20,0
4,0	20,0	25,0
4,0	25,0	25,0
4,0	30,0	25,0
5,0	13,0	15,0
5,0	20,0	20,0
5,0	22,0	25,0
5,0	25,0	25,0
5,0	30,0	25,0
5,0	35,0	25,0
6,0	12,0	25,0
6,0	15,0	25,0
6,0	20,0	25,0
6,0	30,0	25,0
8,0	10,0	25,0
8,0	14,0	25,0
8,0	15,0	25,0
8,0	20,0	25,0
8,0	25,0	25,0

A	B	h
8,0	30,0	25,0
10,0	15,0	25,0
10,0	20,0	25,0
10,0	25,0	25,0
10,0	30,0	30,0
10,0	35,0	30,0
10,0	40,0	30,0
12,0	30,0	30,0
12,0	50,0	30,0
12,0	55,0	30,0
15,0	25,0	25,0
15,0	30,0	30,0
15,0	40,0	30,0
15,0	60,0	30,0
20,0	30,0	30,0
20,0	35,0	30,0
20,0	37,0	30,0
20,0	40,0	30,0
20,0	50,0	30,0
25,0	30,0	30,0
25,0	40,0	30,0
25,0	50,0	30,0

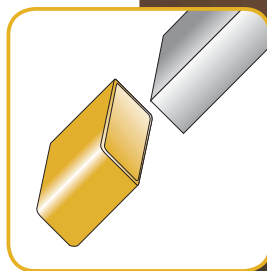


276

> Other dimensions and/or lengths (h) on request.

> Unit of sale ~ 1 000 pieces depending on the dimension.

> Example of part N° for the model A = 1,5 / B = 10,0 / h = 15,0 : caps 1,5 x 10,0 x 15,0...



MATERIALS - COLOURS

STANDARD :

- Black soft PVC $\approx 65^\circ$ shore.

ON REQUEST :

- White / Grey / Red / Blue / Green / Yellow.
Any other colour on request.
Minimum quantity on request.



277



White



Grey



Red



Blue



Green

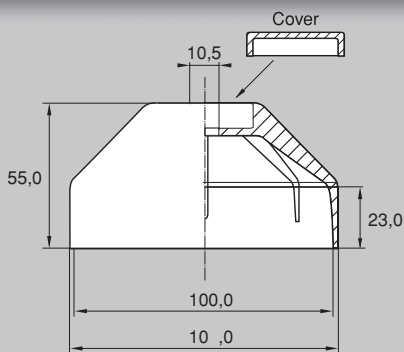


Yellow



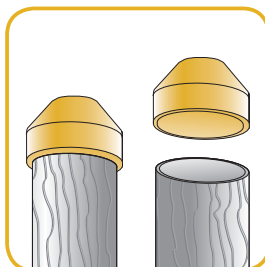
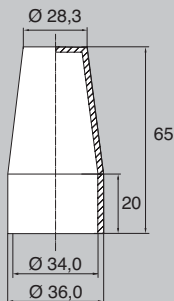
PLUGS

- > Protection caps for wooden logs
- > Head covers for hex screws/nuts "high model"

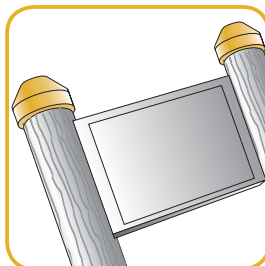
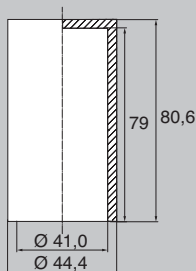


Colour	RAL	For wooden log	Unit of sale	Part N°
Green	6016	100,0	100	PRON6016
gelb	1023	100,0	100	PRON1023
Red	3016	100,0	100	PRON3016
Blue	5010	100,0	100	PRON5010
Black	-	100,0	100	PRON9005

> Fixing with woodscrews \varnothing 10 mm.



For screw / nut	Unit of sale	Part N°
M22	5 000	5322EHAUT



For screw / nut	Unit of sale	Part N°
M24	5 000	5324DHAUT

MATERIALS - COLOURS

Caps for wooden logs

STANDARD :

- Green PE RAL 6016 / Yellow PE RAL 1023 / Red PE RAL 3016 / Blue PE RAL 5010 / Black PE.

ON REQUEST :

- Other colours : see RAL colour chart, page 510 / 511.

Covers for screws / nuts M22

STANDARD :

- Black PE.

ON REQUEST :

- Grey PE.
- Minimum quantity on request.
- Other colours : see RAL colour chart, page 510 / 511.

Covers for screws / nuts M24

STANDARD :

- Natural PE.

ON REQUEST :

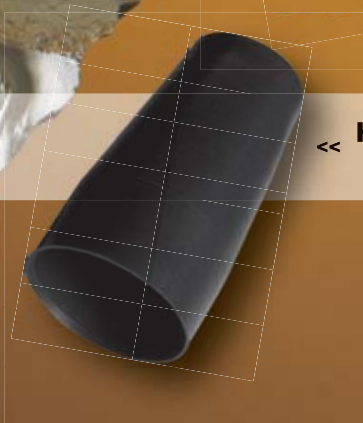
- Black PE / Grey PE.
- Minimum quantity on request.
- Other colours : see RAL colour chart, page 510 / 511.



**Protection cap
for wooden log**



**Head cover for hex screw /
nut "high model" M22**



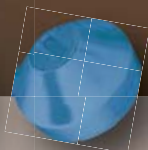
**Head cover for hex screw /
nut "high model" M24**



Yellow PE



Red PE



Blue PE



Black PE



Grey PE



Black PE

