



SPACERS

82







SPACERS



> Round spacers d = 2,6 / 3,2 Page **86 - 87**



> Round spacers d = 3,2 / 3,6 / 4,3 Page **88 - 89**



> Round spacers d = 4,3 / 5,2 / 5,3 Page **90 - 91**



> Round spacers d = 5,3 Page **92 - 93**



> Round spacers d = 5,3 / 6,0 / 6,4 Page **94 - 95**



> Round spacers d = 6,4 Page **96 - 97**



> Round spacers d = 6,4 / 7,3 / 8,2 Page **98 - 99**



> Round spacers d = 8,4 Page **100 - 101**



> Round spacers d = 10,2 / 10,5 / 12,2 Page **102 - 103**



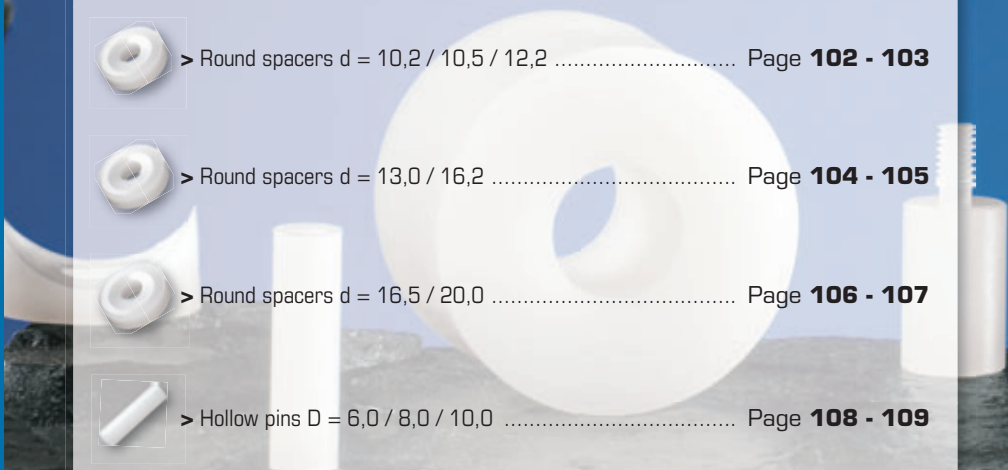
> Round spacers d = 13,0 / 16,2 Page **104 - 105**



> Round spacers d = 16,5 / 20,0 Page **106 - 107**



> Hollow pins D = 6,0 / 8,0 / 10,0 Page **108 - 109**





> Retaining spacers d = 3,2 Page **110 - 111**



> Retaining spacers d = 4,3 / 5,3 Page **112 - 113**



> Retaining spacers d = 6,4 / 8,4 / 10,5 Page **114 - 115**



> Metric round tapped spacers M3 Page **116 - 117**



> Metric round tapped spacers M4 / M5 Page **118 - 119**



> Metric hex tapped spacers M2,5 / M3 Page **120 - 121**



> Metric hex tapped spacers M4 / M5 Page **122 - 123**



> Metric hex tapped / threaded spacers M3 / M4 Page **124 - 125**



> PCB spacers with clips M3 / M4 Page **126 - 127**



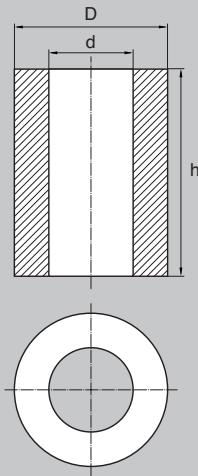
> Saddle washers / spacers M6 Page **128 - 129**



> Saddle washers / spacers M6 / M8 Page **130 - 131**



SPACERS > Round spacers d = 2,6 / 3,2



d	D	h	Unit of sale
2,6	x 4,0	x 2,0	1 000
2,6	x 4,0	x 3,0	1 000
2,6	x 4,0	x 4,0	1 000
2,6	x 4,0	x 5,0	1 000
2,6	x 4,0	x 6,0	1 000
2,6	x 4,0	x 7,0	1 000
2,6	x 4,0	x 7,5	10 000
2,6	x 4,0	x 8,0	1 000
2,6	x 4,0	x 9,0	1 000
2,6	x 4,0	x 10,0	1 000
2,6	x 4,0	x 11,0	1 000
2,6	x 4,0	x 12,0	1 000
2,6	x 4,0	x 12,5	10 000
2,6	x 4,0	x 13,0	1 000
2,6	x 4,0	x 14,0	1 000
2,6	x 4,0	x 15,0	1 000
2,6	x 4,0	x 16,0	1 000
2,6	x 4,0	x 17,0	1 000
2,6	x 4,0	x 17,5	10 000
2,6	x 4,0	x 18,0	1 000
2,6	x 4,0	x 19,0	1 000
2,6	x 4,0	x 20,0	1 000
2,6	x 4,0	x 21,0	1 000
2,6	x 4,0	x 22,0	1 000
2,6	x 4,0	x 22,5	10 000
2,6	x 4,0	x 23,0	1 000
2,6	x 4,0	x 24,0	1 000
2,6	x 4,0	x 25,0	1 000
2,6	x 4,0	x 26,0	1 000
2,6	x 4,0	x 27,0	1 000
2,6	x 4,0	x 28,0	1 000
2,6	x 4,0	x 29,0	1 000
2,6	x 4,0	x 30,0	1 000

d	D	h
3,2	x 5,0	x 2,0
3,2	x 5,0	x 3,0
3,2	x 5,0	x 4,0
3,2	x 5,0	x 5,0
3,2	x 5,0	x 6,0
3,2	x 5,0	x 7,0
3,2	x 5,0	x 7,5
3,2	x 5,0	x 8,0
3,2	x 5,0	x 9,0
3,2	x 5,0	x 10,0
3,2	x 5,0	x 11,0
3,2	x 5,0	x 12,0
3,2	x 5,0	x 12,5
3,2	x 5,0	x 13,0
3,2	x 5,0	x 14,0
3,2	x 5,0	x 15,0
3,2	x 5,0	x 16,0
3,2	x 5,0	x 17,0
3,2	x 5,0	x 17,5
3,2	x 5,0	x 18,0
3,2	x 5,0	x 19,0
3,2	x 5,0	x 20,0
3,2	x 5,0	x 21,0
3,2	x 5,0	x 22,0
3,2	x 5,0	x 22,5
3,2	x 5,0	x 23,0
3,2	x 5,0	x 24,0
3,2	x 5,0	x 25,0
3,2	x 5,0	x 26,0
3,2	x 5,0	x 27,0
3,2	x 5,0	x 28,0
3,2	x 5,0	x 29,0
3,2	x 5,0	x 30,0

86

- > The spacer allows a constant gap between 2 components.
- > It is insulating and absorbs vibrations.
- > It is highly resistant to temperature and liquids therefore safe to use in a wide range of applications, especially in electronics.

Product part N° = dimension : d x D x h.

→ Continued next page.

MATERIALS - COLOURS

STANDARD :

- Natural nylon

ON REQUEST :

- Black Nylon / Nylon glass filled / PE / PP / POM / PS.
Minimum quantity on request.
- Colours : see RAL colour chart page 510 / 511.



SPACERS > Round spacers d = 3,2 / 3,6 / 4,3

d	D	h	Unit of sale
3,2	x 6,0	x 2,0	1 000
3,2	x 6,0	x 3,0	1 000
3,2	x 6,0	x 4,0	1 000
3,2	x 6,0	x 5,0	1 000
3,2	x 6,0	x 6,0	1 000
3,2	x 6,0	x 7,0	1 000
3,2	x 6,0	x 7,5	10 000
3,2	x 6,0	x 8,0	1 000
3,2	x 6,0	x 9,0	1 000
3,2	x 6,0	x 10,0	1 000
3,2	x 6,0	x 11,0	1 000
3,2	x 6,0	x 12,0	1 000
3,2	x 6,0	x 12,5	10 000
3,2	x 6,0	x 13,0	1 000
3,2	x 6,0	x 14,0	1 000
3,2	x 6,0	x 15,0	1 000
3,2	x 6,0	x 16,0	1 000
3,2	x 6,0	x 17,0	1 000
3,2	x 6,0	x 17,5	10 000
3,2	x 6,0	x 18,0	1 000
3,2	x 6,0	x 19,0	1 000
3,2	x 6,0	x 20,0	1 000
3,2	x 6,0	x 21,0	1 000
3,2	x 6,0	x 22,0	1 000
3,2	x 6,0	x 22,5	10 000
3,2	x 6,0	x 23,0	1 000
3,2	x 6,0	x 24,0	1 000
3,2	x 6,0	x 25,0	1 000
3,2	x 6,0	x 26,0	1 000
3,2	x 6,0	x 27,0	1 000
3,2	x 6,0	x 28,0	1 000
3,2	x 6,0	x 29,0	1 000
3,2	x 6,0	x 30,0	1 000

d	D	h	Unit of sale
3,2	x 8,0	x 2,0	1 000
3,2	x 8,0	x 3,0	1 000
3,2	x 8,0	x 4,0	1 000
3,2	x 8,0	x 5,0	1 000
3,2	x 8,0	x 6,0	1 000
3,2	x 8,0	x 7,0	1 000
3,2	x 8,0	x 7,5	10 000
3,2	x 8,0	x 8,0	1 000
3,2	x 8,0	x 9,0	1 000
3,2	x 8,0	x 10,0	1 000
3,2	x 8,0	x 11,0	1 000
3,2	x 8,0	x 12,0	1 000
3,2	x 8,0	x 12,5	10 000
3,2	x 8,0	x 13,0	1 000
3,2	x 8,0	x 14,0	1 000
3,2	x 8,0	x 15,0	1 000
3,2	x 8,0	x 16,0	1 000
3,2	x 8,0	x 17,0	1 000
3,2	x 8,0	x 17,5	10 000
3,2	x 8,0	x 18,0	1 000
3,2	x 8,0	x 19,0	1 000
3,2	x 8,0	x 20,0	1 000
3,2	x 8,0	x 21,0	1 000
3,2	x 8,0	x 22,0	1 000
3,2	x 8,0	x 22,5	10 000
3,2	x 8,0	x 23,0	1 000
3,2	x 8,0	x 24,0	1 000
3,2	x 8,0	x 25,0	1 000
3,2	x 8,0	x 26,0	1 000
3,2	x 8,0	x 27,0	1 000
3,2	x 8,0	x 28,0	1 000
3,2	x 8,0	x 29,0	1 000
3,2	x 8,0	x 30,0	1 000

d	D	h	Unit of sale
3,6	x 6,0	x 2,0	1 000
3,6	x 6,0	x 3,0	1 000
3,6	x 6,0	x 4,0	1 000
3,6	x 6,0	x 5,0	1 000
3,6	x 6,0	x 6,0	1 000
3,6	x 6,0	x 7,0	1 000
3,6	x 6,0	x 7,5	10 000
3,6	x 6,0	x 8,0	1 000
3,6	x 6,0	x 9,0	1 000
3,6	x 6,0	x 10,0	1 000
3,6	x 6,0	x 11,0	1 000
3,6	x 6,0	x 12,0	1 000
3,6	x 6,0	x 12,5	10 000
3,6	x 6,0	x 13,0	1 000
3,6	x 6,0	x 14,0	1 000
3,6	x 6,0	x 15,0	1 000
3,6	x 6,0	x 16,0	1 000
3,6	x 6,0	x 17,0	1 000
3,6	x 6,0	x 17,5	10 000
3,6	x 6,0	x 18,0	1 000
3,6	x 6,0	x 19,0	1 000
3,6	x 6,0	x 20,0	1 000
3,6	x 6,0	x 21,0	1 000
3,6	x 6,0	x 22,0	1 000
3,6	x 6,0	x 22,5	10 000
3,6	x 6,0	x 23,0	1 000
3,6	x 6,0	x 24,0	1 000
3,6	x 6,0	x 25,0	1 000
3,6	x 6,0	x 26,0	1 000
3,6	x 6,0	x 27,0	1 000
3,6	x 6,0	x 28,0	1 000
3,6	x 6,0	x 29,0	1 000
3,6	x 6,0	x 30,0	1 000





Black nylon



Nylon glass filled



PE



PP



POM

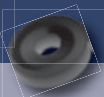


PS

h	Unit of sale
2,0	1 000
3,0	1 000
4,0	1 000
5,0	1 000
6,0	1 000
7,0	1 000
7,5	10 000
8,0	1 000
9,0	1 000
10,0	1 000
11,0	1 000
12,0	1 000
12,5	10 000
13,0	1 000
14,0	1 000
15,0	1 000
16,0	1 000
17,0	1 000
17,5	10 000
18,0	1 000
19,0	1 000
20,0	1 000
21,0	1 000
22,0	1 000
22,5	10 000
23,0	1 000
24,0	1 000
25,0	1 000
26,0	1 000
27,0	1 000
28,0	1 000
29,0	1 000
30,0	1 000

d	D	h	Unit of sale
4,3	x 8,0	x 2,0	1 000
4,3	x 8,0	x 3,0	1 000
4,3	x 8,0	x 4,0	1 000
4,3	x 8,0	x 5,0	1 000
4,3	x 8,0	x 6,0	1 000
4,3	x 8,0	x 7,0	1 000
4,3	x 8,0	x 7,5	10 000
4,3	x 8,0	x 8,0	1 000
4,3	x 8,0	x 9,0	1 000
4,3	x 8,0	x 10,0	1 000
4,3	x 8,0	x 11,0	1 000
4,3	x 8,0	x 12,0	1 000
4,3	x 8,0	x 12,5	10 000
4,3	x 8,0	x 13,0	1 000
4,3	x 8,0	x 14,0	1 000
4,3	x 8,0	x 15,0	1 000
4,3	x 8,0	x 16,0	1 000
4,3	x 8,0	x 17,0	1 000
4,3	x 8,0	x 17,5	10 000
4,3	x 8,0	x 18,0	1 000
4,3	x 8,0	x 19,0	1 000
4,3	x 8,0	x 20,0	1 000
4,3	x 8,0	x 21,0	1 000
4,3	x 8,0	x 22,0	1 000
4,3	x 8,0	x 22,5	10 000
4,3	x 8,0	x 23,0	1 000
4,3	x 8,0	x 24,0	1 000
4,3	x 8,0	x 25,0	1 000
4,3	x 8,0	x 26,0	1 000
4,3	x 8,0	x 27,0	1 000
4,3	x 8,0	x 28,0	1 000
4,3	x 8,0	x 29,0	1 000
4,3	x 8,0	x 30,0	1 000

d	D	h	Unit of sale
4,3	x 10,0	x 2,0	1 000
4,3	x 10,0	x 3,0	1 000
4,3	x 10,0	x 4,0	1 000
4,3	x 10,0	x 5,0	1 000
4,3	x 10,0	x 6,0	1 000
4,3	x 10,0	x 7,0	1 000
4,3	x 10,0	x 7,5	10 000
4,3	x 10,0	x 8,0	1 000
4,3	x 10,0	x 9,0	1 000
4,3	x 10,0	x 10,0	1 000
4,3	x 10,0	x 11,0	1 000
4,3	x 10,0	x 12,0	1 000
4,3	x 10,0	x 12,5	10 000
4,3	x 10,0	x 13,0	1 000
4,3	x 10,0	x 14,0	1 000
4,3	x 10,0	x 15,0	1 000
4,3	x 10,0	x 16,0	1 000
4,3	x 10,0	x 17,0	1 000
4,3	x 10,0	x 17,5	10 000
4,3	x 10,0	x 18,0	1 000
4,3	x 10,0	x 19,0	1 000
4,3	x 10,0	x 20,0	1 000
4,3	x 10,0	x 21,0	1 000
4,3	x 10,0	x 22,0	1 000
4,3	x 10,0	x 22,5	10 000
4,3	x 10,0	x 23,0	1 000
4,3	x 10,0	x 24,0	1 000
4,3	x 10,0	x 25,0	1 000
4,3	x 10,0	x 26,0	1 000
4,3	x 10,0	x 27,0	1 000
4,3	x 10,0	x 28,0	1 000
4,3	x 10,0	x 29,0	1 000
4,3	x 10,0	x 30,0	1 000



Black nylon



Nylon glass filled



PE



PP



POM



PS

h	Unit of sale
31,0	1 000
32,0	1 000
33,0	1 000
34,0	1 000
35,0	1 000
36,0	1 000
37,0	1 000
38,0	1 000
39,0	1 000
40,0	1 000
41,0	1 000
42,0	1 000
43,0	1 000
44,0	1 000
45,0	1 000
46,0	1 000
47,0	1 000
48,0	1 000
49,0	1 000
50,0	1 000

d	D	h	Unit of sale
5,3 x 10,0	x 2,0		1 000
5,3 x 10,0	x 3,0		1 000
5,3 x 10,0	x 4,0		1 000
5,3 x 10,0	x 5,0		1 000
5,3 x 10,0	x 6,0		1 000
5,3 x 10,0	x 7,0		1 000
5,3 x 10,0	x 7,5		5 000
5,3 x 10,0	x 8,0		1 000
5,3 x 10,0	x 9,0		1 000
5,3 x 10,0	x 10,0		1 000
5,3 x 10,0	x 11,0		1 000
5,3 x 10,0	x 12,0		1 000
5,3 x 10,0	x 12,5		5 000
5,3 x 10,0	x 13,0		1 000
5,3 x 10,0	x 14,0		1 000
5,3 x 10,0	x 15,0		1 000
5,3 x 10,0	x 16,0		1 000
5,3 x 10,0	x 17,0		1 000
5,3 x 10,0	x 17,5		5 000
5,3 x 10,0	x 18,0		1 000
5,3 x 10,0	x 19,0		1 000
5,3 x 10,0	x 20,0		1 000
5,3 x 10,0	x 21,0		1 000
5,3 x 10,0	x 22,0		1 000
5,3 x 10,0	x 22,5		5 000
5,3 x 10,0	x 23,0		1 000
5,3 x 10,0	x 24,0		1 000
5,3 x 10,0	x 25,0		1 000
5,3 x 10,0	x 26,0		1 000
5,3 x 10,0	x 27,0		1 000
5,3 x 10,0	x 28,0		1 000
5,3 x 10,0	x 29,0		1 000
5,3 x 10,0	x 30,0		1 000

d	D	h	Unit of sale
5,3 x 12,0	x 2,0		1 000
5,3 x 12,0	x 3,0		1 000
5,3 x 12,0	x 4,0		1 000
5,3 x 12,0	x 5,0		1 000
5,3 x 12,0	x 6,0		1 000
5,3 x 12,0	x 7,0		1 000
5,3 x 12,0	x 7,5		5 000
5,3 x 12,0	x 8,0		1 000
5,3 x 12,0	x 9,0		1 000
5,3 x 12,0	x 10,0		1 000
5,3 x 12,0	x 11,0		1 000
5,3 x 12,0	x 12,0		1 000
5,3 x 12,0	x 12,5		5 000
5,3 x 12,0	x 13,0		1 000
5,3 x 12,0	x 14,0		1 000
5,3 x 12,0	x 15,0		1 000
5,3 x 12,0	x 16,0		1 000
5,3 x 12,0	x 17,0		1 000
5,3 x 12,0	x 17,5		5 000
5,3 x 12,0	x 18,0		1 000
5,3 x 12,0	x 19,0		1 000
5,3 x 12,0	x 20,0		1 000
5,3 x 12,0	x 21,0		1 000
5,3 x 12,0	x 22,0		1 000
5,3 x 12,0	x 22,5		5 000
5,3 x 12,0	x 23,0		1 000
5,3 x 12,0	x 24,0		1 000
5,3 x 12,0	x 25,0		1 000
5,3 x 12,0	x 26,0		1 000
5,3 x 12,0	x 27,0		1 000
5,3 x 12,0	x 28,0		1 000
5,3 x 12,0	x 29,0		1 000
5,3 x 12,0	x 30,0		1 000

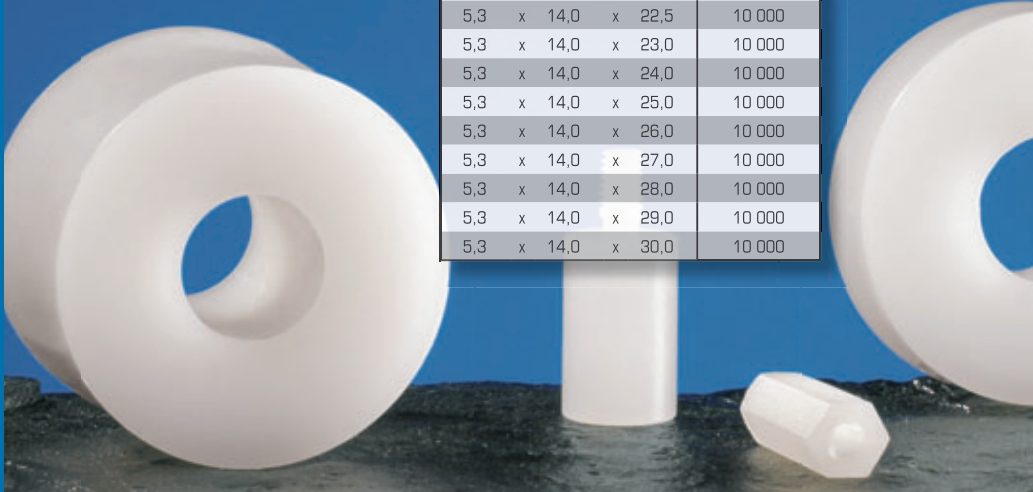


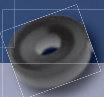
SPACERS > Round spacers d = 5,3

d	D	h	Unit of sale
5,3	x 12,0	x 31,0	1 000
5,3	x 12,0	x 32,0	1 000
5,3	x 12,0	x 33,0	1 000
5,3	x 12,0	x 34,0	1 000
5,3	x 12,0	x 35,0	1 000
5,3	x 12,0	x 36,0	1 000
5,3	x 12,0	x 37,0	1 000
5,3	x 12,0	x 38,0	1 000
5,3	x 12,0	x 39,0	1 000
5,3	x 12,0	x 40,0	1 000
5,3	x 12,0	x 41,0	1 000
5,3	x 12,0	x 42,0	1 000
5,3	x 12,0	x 43,0	1 000
5,3	x 12,0	x 44,0	1 000
5,3	x 12,0	x 45,0	1 000
5,3	x 12,0	x 46,0	1 000
5,3	x 12,0	x 47,0	1 000
5,3	x 12,0	x 48,0	1 000
5,3	x 12,0	x 49,0	1 000
5,3	x 12,0	x 50,0	1 000

d	D	h	Unit of sale
5,3	x 14,0	x 2,0	10 000
5,3	x 14,0	x 3,0	10 000
5,3	x 14,0	x 4,0	10 000
5,3	x 14,0	x 5,0	10 000
5,3	x 14,0	x 6,0	10 000
5,3	x 14,0	x 7,0	10 000
5,3	x 14,0	x 7,5	10 000
5,3	x 14,0	x 8,0	10 000
5,3	x 14,0	x 9,0	10 000
5,3	x 14,0	x 10,0	10 000
5,3	x 14,0	x 11,0	10 000
5,3	x 14,0	x 12,0	10 000
5,3	x 14,0	x 12,5	10 000
5,3	x 14,0	x 13,0	10 000
5,3	x 14,0	x 14,0	10 000
5,3	x 14,0	x 15,0	10 000
5,3	x 14,0	x 16,0	10 000
5,3	x 14,0	x 17,0	10 000
5,3	x 14,0	x 17,5	10 000
5,3	x 14,0	x 18,0	10 000
5,3	x 14,0	x 19,0	10 000
5,3	x 14,0	x 20,0	10 000
5,3	x 14,0	x 21,0	10 000
5,3	x 14,0	x 22,0	10 000
5,3	x 14,0	x 22,5	10 000
5,3	x 14,0	x 23,0	10 000
5,3	x 14,0	x 24,0	10 000
5,3	x 14,0	x 25,0	10 000
5,3	x 14,0	x 26,0	10 000
5,3	x 14,0	x 27,0	10 000
5,3	x 14,0	x 28,0	10 000
5,3	x 14,0	x 29,0	10 000
5,3	x 14,0	x 30,0	10 000

d	D	h	Unit of sale
5,3	x 14,0	x 31,0	10 000
5,3	x 14,0	x 32,0	10 000
5,3	x 14,0	x 33,0	10 000
5,3	x 14,0	x 34,0	10 000
5,3	x 14,0	x 35,0	10 000
5,3	x 14,0	x 36,0	10 000
5,3	x 14,0	x 37,0	10 000
5,3	x 14,0	x 38,0	10 000
5,3	x 14,0	x 39,0	10 000
5,3	x 14,0	x 40,0	10 000
5,3	x 14,0	x 41,0	10 000
5,3	x 14,0	x 42,0	10 000
5,3	x 14,0	x 43,0	10 000
5,3	x 14,0	x 44,0	10 000
5,3	x 14,0	x 45,0	10 000
5,3	x 14,0	x 46,0	10 000
5,3	x 14,0	x 47,0	10 000
5,3	x 14,0	x 48,0	10 000
5,3	x 14,0	x 49,0	10 000
5,3	x 14,0	x 50,0	10 000





Black nylon



Nylon glass filled



PE



PP



POM



PS

h	Unit of sale
31,0	10 000
32,0	10 000
33,0	10 000
34,0	10 000
35,0	10 000
36,0	10 000
37,0	10 000
38,0	10 000
39,0	10 000
40,0	10 000
41,0	10 000
42,0	10 000
43,0	10 000
44,0	10 000
45,0	10 000
46,0	10 000
47,0	10 000
48,0	10 000
49,0	10 000
50,0	10 000

d	D	h	Unit of sale
5,3	x 15,0	x 2,0	1 000
5,3	x 15,0	x 3,0	1 000
5,3	x 15,0	x 4,0	1 000
5,3	x 15,0	x 5,0	1 000
5,3	x 15,0	x 6,0	1 000
5,3	x 15,0	x 7,0	1 000
5,3	x 15,0	x 7,5	5 000
5,3	x 15,0	x 8,0	1 000
5,3	x 15,0	x 9,0	1 000
5,3	x 15,0	x 10,0	1 000
5,3	x 15,0	x 11,0	1 000
5,3	x 15,0	x 12,0	1 000
5,3	x 15,0	x 12,5	5 000
5,3	x 15,0	x 13,0	1 000
5,3	x 15,0	x 14,0	1 000
5,3	x 15,0	x 15,0	1 000
5,3	x 15,0	x 16,0	1 000
5,3	x 15,0	x 17,0	1 000
5,3	x 15,0	x 17,5	5 000
5,3	x 15,0	x 18,0	1 000
5,3	x 15,0	x 19,0	1 000
5,3	x 15,0	x 20,0	1 000
5,3	x 15,0	x 21,0	1 000
5,3	x 15,0	x 22,0	1 000
5,3	x 15,0	x 22,5	5 000
5,3	x 15,0	x 23,0	1 000
5,3	x 15,0	x 24,0	1 000
5,3	x 15,0	x 25,0	1 000
5,3	x 15,0	x 26,0	1 000
5,3	x 15,0	x 27,0	1 000
5,3	x 15,0	x 28,0	1 000
5,3	x 15,0	x 29,0	1 000
5,3	x 15,0	x 30,0	1 000

d	D	h	Unit of sale
5,3	x 20,0	x 2,0	1 000
5,3	x 20,0	x 3,0	1 000
5,3	x 20,0	x 4,0	1 000
5,3	x 20,0	x 5,0	1 000
5,3	x 20,0	x 6,0	1 000
5,3	x 20,0	x 7,0	1 000
5,3	x 20,0	x 7,5	5 000
5,3	x 20,0	x 8,0	1 000
5,3	x 20,0	x 9,0	1 000
5,3	x 20,0	x 10,0	1 000
5,3	x 20,0	x 11,0	1 000
5,3	x 20,0	x 12,0	1 000
5,3	x 20,0	x 12,5	5 000
5,3	x 20,0	x 13,0	1 000
5,3	x 20,0	x 14,0	1 000
5,3	x 20,0	x 15,0	1 000
5,3	x 20,0	x 16,0	1 000
5,3	x 20,0	x 17,0	1 000
5,3	x 20,0	x 17,5	5 000
5,3	x 20,0	x 18,0	1 000
5,3	x 20,0	x 19,0	1 000
5,3	x 20,0	x 20,0	1 000
5,3	x 20,0	x 21,0	1 000
5,3	x 20,0	x 22,0	1 000
5,3	x 20,0	x 22,5	5 000
5,3	x 20,0	x 23,0	1 000
5,3	x 20,0	x 24,0	1 000
5,3	x 20,0	x 25,0	1 000
5,3	x 20,0	x 26,0	1 000
5,3	x 20,0	x 27,0	1 000
5,3	x 20,0	x 28,0	1 000
5,3	x 20,0	x 29,0	1 000
5,3	x 20,0	x 30,0	1 000

Tolerance "d" of the range 5,3 x 20 x ... = - 0,2 mm

• Product part N° = dimension : d x D x h.

→ Continued next page.

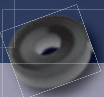


SPACERS > Round spacers d = 5,3 / 6,0 / 6,4



d	D	h	Unit of sale	d	D	h	Unit of sale	d	D
5,3	x 24,0	x 2,0	1 000	5,3	x 28,0	x 2,0	1 000	6,0	x 8,0
5,3	x 24,0	x 3,0	1 000	5,3	x 28,0	x 3,0	1 000	6,0	x 8,0
5,3	x 24,0	x 4,0	1 000	5,3	x 28,0	x 4,0	1 000	6,0	x 8,0
5,3	x 24,0	x 5,0	1 000	5,3	x 28,0	x 5,0	1 000	6,0	x 8,0
5,3	x 24,0	x 6,0	1 000	5,3	x 28,0	x 6,0	1 000	6,0	x 8,0
5,3	x 24,0	x 7,0	1 000	5,3	x 28,0	x 7,0	1 000	6,0	x 8,0
5,3	x 24,0	x 7,5	5 000	5,3	x 28,0	x 7,5	5 000	6,0	x 8,0
5,3	x 24,0	x 8,0	1 000	5,3	x 28,0	x 8,0	1 000	6,0	x 8,0
5,3	x 24,0	x 9,0	1 000	5,3	x 28,0	x 9,0	1 000	6,0	x 8,0
5,3	x 24,0	x 10,0	1 000	5,3	x 28,0	x 10,0	1 000	6,0	x 8,0
5,3	x 24,0	x 11,0	1 000	5,3	x 28,0	x 11,0	1 000	6,0	x 8,0
5,3	x 24,0	x 12,0	1 000	5,3	x 28,0	x 12,0	1 000	6,0	x 8,0
5,3	x 24,0	x 12,5	5 000	5,3	x 28,0	x 12,5	5 000	6,0	x 8,0
5,3	x 24,0	x 13,0	1 000	5,3	x 28,0	x 13,0	1 000	6,0	x 8,0
5,3	x 24,0	x 14,0	1 000	5,3	x 28,0	x 14,0	1 000	6,0	x 8,0
5,3	x 24,0	x 15,0	1 000	5,3	x 28,0	x 15,0	1 000	6,0	x 8,0
5,3	x 24,0	x 16,0	1 000	5,3	x 28,0	x 16,0	1 000	6,0	x 8,0
5,3	x 24,0	x 17,0	1 000	5,3	x 28,0	x 17,0	1 000	6,0	x 8,0
5,3	x 24,0	x 17,5	5 000	5,3	x 28,0	x 17,5	5 000	6,0	x 8,0
5,3	x 24,0	x 18,0	1 000	5,3	x 28,0	x 18,0	1 000	6,0	x 8,0
5,3	x 24,0	x 19,0	1 000	5,3	x 28,0	x 19,0	1 000	6,0	x 8,0
5,3	x 24,0	x 20,0	1 000	5,3	x 28,0	x 20,0	1 000	6,0	x 8,0
5,3	x 24,0	x 21,0	1 000	5,3	x 28,0	x 21,0	1 000	6,0	x 8,0
5,3	x 24,0	x 22,0	1 000	5,3	x 28,0	x 22,0	1 000	6,0	x 8,0
5,3	x 24,0	x 22,5	5 000	5,3	x 28,0	x 22,5	5 000	6,0	x 8,0
5,3	x 24,0	x 23,0	1 000	5,3	x 28,0	x 23,0	1 000	6,0	x 8,0
5,3	x 24,0	x 24,0	1 000	5,3	x 28,0	x 24,0	1 000	6,0	x 8,0
5,3	x 24,0	x 25,0	1 000	5,3	x 28,0	x 25,0	1 000	6,0	x 8,0
5,3	x 24,0	x 26,0	1 000	5,3	x 28,0	x 26,0	1 000	6,0	x 8,0
5,3	x 24,0	x 27,0	1 000	5,3	x 28,0	x 27,0	1 000	6,0	x 8,0
5,3	x 24,0	x 28,0	1 000	5,3	x 28,0	x 28,0	1 000	6,0	x 8,0
5,3	x 24,0	x 29,0	1 000	5,3	x 28,0	x 29,0	1 000	6,0	x 8,0
5,3	x 24,0	x 30,0	1 000	5,3	x 28,0	x 30,0	1 000	6,0	x 8,0

Tolerance "d" of the range 5,3 x 24 x ... = - 0,2 mm



Black nylon



Nylon glass filled



PE



PP



POM



PS

h	Unit of sale
2,0	1 000
3,0	1 000
4,0	1 000
5,0	1 000
6,0	1 000
7,0	1 000
7,5	5 000
8,0	1 000
9,0	1 000
10,0	1 000
11,0	1 000
12,0	1 000
12,5	5 000
13,0	1 000
14,0	1 000
15,0	1 000
16,0	1 000
17,0	1 000
17,5	5 000
18,0	1 000
19,0	1 000
20,0	1 000
21,0	1 000
22,0	1 000
22,5	5 000
23,0	1 000
24,0	1 000
25,0	1 000
26,0	1 000
27,0	1 000
28,0	1 000
29,0	1 000
30,0	1 000

d	D	h	Unit of sale
6,2	x 10,0	x 2,0	1 000
6,2	x 10,0	x 3,0	1 000
6,2	x 10,0	x 4,0	1 000
6,2	x 10,0	x 5,0	1 000
6,2	x 10,0	x 6,0	1 000
6,2	x 10,0	x 7,0	1 000
6,2	x 10,0	x 7,5	5 000
6,2	x 10,0	x 8,0	1 000
6,2	x 10,0	x 9,0	1 000
6,2	x 10,0	x 10,0	1 000
6,2	x 10,0	x 11,0	1 000
6,2	x 10,0	x 12,0	1 000
6,2	x 10,0	x 12,5	5 000
6,2	x 10,0	x 13,0	1 000
6,2	x 10,0	x 14,0	1 000
6,2	x 10,0	x 15,0	1 000
6,2	x 10,0	x 16,0	1 000
6,2	x 10,0	x 17,0	1 000
6,2	x 10,0	x 17,5	5 000
6,2	x 10,0	x 18,0	1 000
6,2	x 10,0	x 19,0	1 000
6,2	x 10,0	x 20,0	1 000
6,2	x 10,0	x 21,0	1 000
6,2	x 10,0	x 22,0	1 000
6,2	x 10,0	x 22,5	5 000
6,2	x 10,0	x 23,0	1 000
6,2	x 10,0	x 24,0	1 000
6,2	x 10,0	x 25,0	1 000
6,2	x 10,0	x 26,0	1 000
6,2	x 10,0	x 27,0	1 000
6,2	x 10,0	x 28,0	1 000
6,2	x 10,0	x 29,0	1 000
6,2	x 10,0	x 30,0	1 000
6,2	x 10,0	x 31,0	1 000
6,2	x 10,0	x 32,0	1 000
6,2	x 10,0	x 33,0	1 000
6,2	x 10,0	x 34,0	1 000
6,2	x 10,0	x 35,0	1 000
6,2	x 10,0	x 36,0	1 000
6,2	x 10,0	x 37,0	1 000
6,2	x 10,0	x 38,0	1 000
6,2	x 10,0	x 39,0	1 000
6,2	x 10,0	x 40,0	1 000

d	D	h	Unit of sale
6,4	x 12,0	x 2,0	1 000
6,4	x 12,0	x 3,0	1 000
6,4	x 12,0	x 4,0	1 000
6,4	x 12,0	x 5,0	1 000
6,4	x 12,0	x 6,0	1 000
6,4	x 12,0	x 7,0	1 000
6,4	x 12,0	x 7,5	5 000
6,4	x 12,0	x 8,0	1 000
6,4	x 12,0	x 9,0	1 000
6,4	x 12,0	x 10,0	1 000
6,4	x 12,0	x 11,0	1 000
6,4	x 12,0	x 12,0	1 000
6,4	x 12,0	x 12,5	5 000
6,4	x 12,0	x 13,0	1 000
6,4	x 12,0	x 14,0	1 000
6,4	x 12,0	x 15,0	1 000
6,4	x 12,0	x 16,0	1 000
6,4	x 12,0	x 17,0	1 000
6,4	x 12,0	x 17,5	5 000
6,4	x 12,0	x 18,0	1 000
6,4	x 12,0	x 19,0	1 000
6,4	x 12,0	x 20,0	1 000
6,4	x 12,0	x 21,0	1 000
6,4	x 12,0	x 22,0	1 000
6,4	x 12,0	x 22,5	5 000
6,4	x 12,0	x 23,0	1 000
6,4	x 12,0	x 24,0	1 000
6,4	x 12,0	x 25,0	1 000
6,4	x 12,0	x 26,0	1 000
6,4	x 12,0	x 27,0	1 000
6,4	x 12,0	x 28,0	1 000
6,4	x 12,0	x 29,0	1 000
6,4	x 12,0	x 30,0	1 000

Tolerance "D" of the range 6,4 x 12 x ... = + 0,5 mm.

• Product part N° = dimension : d x D x h.

→ Continued next page.



SPACERS > Round spacers d = 6,4

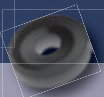
d	D	h	Unit of sale
6,4	x 15,0	x 2,0	1 000
6,4	x 15,0	x 3,0	1 000
6,4	x 15,0	x 4,0	1 000
6,4	x 15,0	x 5,0	1 000
6,4	x 15,0	x 6,0	1 000
6,4	x 15,0	x 7,0	1 000
6,4	x 15,0	x 7,5	5 000
6,4	x 15,0	x 8,0	1 000
6,4	x 15,0	x 9,0	1 000
6,4	x 15,0	x 10,0	1 000
6,4	x 15,0	x 11,0	1 000
6,4	x 15,0	x 12,0	1 000
6,4	x 15,0	x 12,5	5 000
6,4	x 15,0	x 13,0	1 000
6,4	x 15,0	x 14,0	1 000
6,4	x 15,0	x 15,0	1 000
6,4	x 15,0	x 16,0	1 000
6,4	x 15,0	x 17,0	1 000
6,4	x 15,0	x 17,5	5 000
6,4	x 15,0	x 18,0	1 000
6,4	x 15,0	x 19,0	1 000
6,4	x 15,0	x 20,0	1 000
6,4	x 15,0	x 21,0	1 000
6,4	x 15,0	x 22,0	1 000
6,4	x 15,0	x 22,5	5 000
6,4	x 15,0	x 23,0	1 000
6,4	x 15,0	x 24,0	1 000
6,4	x 15,0	x 25,0	1 000
6,4	x 15,0	x 26,0	1 000
6,4	x 15,0	x 27,0	1 000
6,4	x 15,0	x 28,0	1 000
6,4	x 15,0	x 29,0	1 000
6,4	x 15,0	x 30,0	1 000

d	D	h	Unit of sale
6,4	x 16,0	x 2,0	10 000
6,4	x 16,0	x 3,0	10 000
6,4	x 16,0	x 4,0	10 000
6,4	x 16,0	x 5,0	10 000
6,4	x 16,0	x 6,0	10 000
6,4	x 16,0	x 7,0	10 000
6,4	x 16,0	x 7,5	10 000
6,4	x 16,0	x 8,0	10 000
6,4	x 16,0	x 9,0	10 000
6,4	x 16,0	x 10,0	10 000
6,4	x 16,0	x 11,0	10 000
6,4	x 16,0	x 12,0	10 000
6,4	x 16,0	x 12,5	10 000
6,4	x 16,0	x 13,0	10 000
6,4	x 16,0	x 14,0	10 000
6,4	x 16,0	x 15,0	10 000
6,4	x 16,0	x 16,0	10 000
6,4	x 16,0	x 17,0	10 000
6,4	x 16,0	x 17,5	10 000
6,4	x 16,0	x 18,0	10 000
6,4	x 16,0	x 19,0	10 000
6,4	x 16,0	x 20,0	10 000

d	D	h	Unit of sale
6,4	x 18,0	x 2,0	10 000
6,4	x 18,0	x 3,0	10 000
6,4	x 18,0	x 4,0	10 000
6,4	x 18,0	x 5,0	10 000
6,4	x 18,0	x 6,0	10 000
6,4	x 18,0	x 7,0	10 000
6,4	x 18,0	x 7,5	10 000
6,4	x 18,0	x 8,0	10 000
6,4	x 18,0	x 9,0	10 000
6,4	x 18,0	x 10,0	10 000
6,4	x 18,0	x 11,0	10 000
6,4	x 18,0	x 12,0	10 000
6,4	x 18,0	x 12,5	10 000
6,4	x 18,0	x 13,0	10 000
6,4	x 18,0	x 14,0	10 000
6,4	x 18,0	x 15,0	10 000
6,4	x 18,0	x 16,0	10 000
6,4	x 18,0	x 17,0	10 000
6,4	x 18,0	x 17,5	10 000
6,4	x 18,0	x 18,0	10 000
6,4	x 18,0	x 19,0	10 000
6,4	x 18,0	x 20,0	10 000
6,4	x 18,0	x 21,0	10 000
6,4	x 18,0	x 22,0	10 000
6,4	x 18,0	x 22,5	10 000
6,4	x 18,0	x 23,0	10 000
6,4	x 18,0	x 24,0	10 000
6,4	x 18,0	x 25,0	10 000
6,4	x 18,0	x 26,0	10 000
6,4	x 18,0	x 27,0	10 000
6,4	x 18,0	x 28,0	10 000
6,4	x 18,0	x 29,0	10 000
6,4	x 18,0	x 30,0	10 000

Tolerance "D" of the range 6,4 x 16 x ... = - 0,3 mm.





Black nylon



Nylon glass filled



PE



PP



POM



PS

h	Unit of sale	d	D	h	Unit of sale
2,0	1 000	6,4	x 20,0	x 2,0	1 000
3,0	1 000	6,4	x 20,0	x 3,0	1 000
4,0	1 000	6,4	x 20,0	x 4,0	1 000
5,0	1 000	6,4	x 20,0	x 5,0	1 000
6,0	1 000	6,4	x 20,0	x 6,0	1 000
7,0	1 000	6,4	x 20,0	x 7,0	1 000
7,5	5 000	6,4	x 20,0	x 7,5	5 000
8,0	1 000	6,4	x 20,0	x 8,0	1 000
9,0	1 000	6,4	x 20,0	x 9,0	1 000
10,0	1 000	6,4	x 20,0	x 10,0	1 000
11,0	1 000	6,4	x 20,0	x 11,0	1 000
12,0	1 000	6,4	x 20,0	x 12,0	1 000
12,5	5 000	6,4	x 20,0	x 12,5	5 000
13,0	1 000	6,4	x 20,0	x 13,0	1 000
14,0	1 000	6,4	x 20,0	x 14,0	1 000
15,0	1 000	6,4	x 20,0	x 15,0	1 000
16,0	1 000	6,4	x 20,0	x 16,0	1 000
17,0	1 000	6,4	x 20,0	x 17,0	1 000
17,5	5 000	6,4	x 20,0	x 17,5	5 000
18,0	1 000	6,4	x 20,0	x 18,0	1 000
19,0	1 000	6,4	x 20,0	x 19,0	1 000
20,0	1 000	6,4	x 20,0	x 20,0	1 000
21,0	1 000	6,4	x 20,0	x 21,0	1 000
22,0	1 000	6,4	x 20,0	x 22,0	1 000
22,5	5 000	6,4	x 20,0	x 22,5	5 000
23,0	1 000	6,4	x 20,0	x 23,0	1 000
24,0	1 000	6,4	x 20,0	x 24,0	1 000
25,0	1 000	6,4	x 20,0	x 25,0	1 000
26,0	1 000	6,4	x 20,0	x 26,0	1 000
27,0	1 000	6,4	x 20,0	x 27,0	1 000
28,0	1 000	6,4	x 20,0	x 28,0	1 000
29,0	1 000	6,4	x 20,0	x 29,0	1 000
30,0	1 000	6,4	x 20,0	x 30,0	1 000

d	D	h	Unit of sale
6,4	x 24,0	x 2,0	1 000
6,4	x 24,0	x 3,0	1 000
6,4	x 24,0	x 4,0	1 000
6,4	x 24,0	x 5,0	1 000
6,4	x 24,0	x 6,0	1 000
6,4	x 24,0	x 7,0	1 000
6,4	x 24,0	x 7,5	5 000
6,4	x 24,0	x 8,0	1 000
6,4	x 24,0	x 9,0	1 000
6,4	x 24,0	x 10,0	1 000
6,4	x 24,0	x 11,0	1 000
6,4	x 24,0	x 12,0	1 000
6,4	x 24,0	x 12,5	5 000
6,4	x 24,0	x 13,0	1 000
6,4	x 24,0	x 14,0	1 000
6,4	x 24,0	x 15,0	1 000
6,4	x 24,0	x 16,0	1 000
6,4	x 24,0	x 17,0	1 000
6,4	x 24,0	x 17,5	5 000
6,4	x 24,0	x 18,0	1 000
6,4	x 24,0	x 19,0	1 000
6,4	x 24,0	x 20,0	1 000

→ Continued next page.



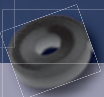
• Product part N° = dimension : d x D x h.

SPACERS > Round spacers d = 6,4 / 7,3 / 8,2

d	D	h	Unit of sale
6,4	x 24,0	x 21,0	1 000
6,4	x 24,0	x 22,0	1 000
6,4	x 24,0	x 22,5	5 000
6,4	x 24,0	x 23,0	1 000
6,4	x 24,0	x 24,0	1 000
6,4	x 24,0	x 25,0	1 000
6,4	x 24,0	x 26,0	1 000
6,4	x 24,0	x 27,0	1 000
6,4	x 24,0	x 28,0	1 000
6,4	x 24,0	x 29,0	1 000
6,4	x 24,0	x 30,0	1 000
6,4	x 24,0	x 31,0	1 000
6,4	x 24,0	x 32,0	1 000
6,4	x 24,0	x 33,0	1 000
6,4	x 24,0	x 34,0	1 000
6,4	x 24,0	x 35,0	1 000
6,4	x 24,0	x 36,0	1 000
6,4	x 24,0	x 37,0	1 000
6,4	x 24,0	x 38,0	1 000
6,4	x 24,0	x 39,0	1 000
6,4	x 24,0	x 40,0	1 000
6,4	x 24,0	x 41,0	1 000
6,4	x 24,0	x 42,0	1 000
6,4	x 24,0	x 43,0	1 000
6,4	x 24,0	x 44,0	1 000
6,4	x 24,0	x 45,0	1 000
6,4	x 24,0	x 46,0	1 000
6,4	x 24,0	x 47,0	1 000
6,4	x 24,0	x 48,0	1 000
6,4	x 24,0	x 49,0	1 000
6,4	x 24,0	x 50,0	1 000

d	D	h	Unit of sale
7,3	x 20,0	x 2,0	1 000
7,3	x 20,0	x 3,0	1 000
7,3	x 20,0	x 4,0	1 000
7,3	x 20,0	x 5,0	1 000
7,3	x 20,0	x 6,0	1 000
7,3	x 20,0	x 7,0	1 000
7,3	x 20,0	x 7,5	5 000
7,3	x 20,0	x 8,0	1 000
7,3	x 20,0	x 9,0	1 000
7,3	x 20,0	x 10,0	1 000
7,3	x 20,0	x 11,0	1 000
7,3	x 20,0	x 12,0	1 000
7,3	x 20,0	x 12,5	5 000
7,3	x 20,0	x 13,0	1 000
7,3	x 20,0	x 14,0	1 000
7,3	x 20,0	x 15,0	1 000
7,3	x 20,0	x 16,0	1 000
7,3	x 20,0	x 17,0	1 000
7,3	x 20,0	x 17,5	5 000
7,3	x 20,0	x 18,0	1 000
7,3	x 20,0	x 19,0	1 000
7,3	x 20,0	x 20,0	1 000
7,3	x 20,0	x 21,0	1 000
7,3	x 20,0	x 22,0	1 000
7,3	x 20,0	x 22,5	5 000
7,3	x 20,0	x 23,0	1 000
7,3	x 20,0	x 24,0	1 000
7,3	x 20,0	x 25,0	1 000
7,3	x 20,0	x 26,0	1 000
7,3	x 20,0	x 27,0	1 000
7,3	x 20,0	x 28,0	1 000
7,3	x 20,0	x 29,0	1 000
7,3	x 20,0	x 30,0	1 000
7,3	x 20,0	x 31,0	1 000
7,3	x 20,0	x 32,0	1 000
7,3	x 20,0	x 33,0	1 000
7,3	x 20,0	x 34,0	1 000
7,3	x 20,0	x 35,0	1 000
7,3	x 20,0	x 36,0	1 000
7,3	x 20,0	x 37,0	1 000
7,3	x 20,0	x 38,0	1 000
7,3	x 20,0	x 39,0	1 000
7,3	x 20,0	x 40,0	1 000

d	D	h	Unit of sale
8,2	x 12,0	x 2,0	1 000
8,2	x 12,0	x 3,0	1 000
8,2	x 12,0	x 4,0	1 000
8,2	x 12,0	x 5,0	1 000
8,2	x 12,0	x 6,0	1 000
8,2	x 12,0	x 7,0	1 000
8,2	x 12,0	x 7,5	5 000
8,2	x 12,0	x 8,0	1 000
8,2	x 12,0	x 9,0	1 000
8,2	x 12,0	x 10,0	1 000
8,2	x 12,0	x 11,0	1 000
8,2	x 12,0	x 12,0	1 000
8,2	x 12,0	x 12,5	5 000
8,2	x 12,0	x 13,0	1 000
8,2	x 12,0	x 14,0	1 000
8,2	x 12,0	x 15,0	1 000
8,2	x 12,0	x 16,0	1 000
8,2	x 12,0	x 17,0	1 000
8,2	x 12,0	x 17,5	5 000
8,2	x 12,0	x 18,0	1 000
8,2	x 12,0	x 19,0	1 000
8,2	x 12,0	x 20,0	1 000
8,2	x 12,0	x 21,0	1 000
8,2	x 12,0	x 22,0	1 000
8,2	x 12,0	x 22,5	5 000
8,2	x 12,0	x 23,0	1 000
8,2	x 12,0	x 24,0	1 000
8,2	x 12,0	x 25,0	1 000
8,2	x 12,0	x 26,0	1 000
8,2	x 12,0	x 27,0	1 000
8,2	x 12,0	x 28,0	1 000
8,2	x 12,0	x 29,0	1 000
8,2	x 12,0	x 30,0	1 000
8,2	x 12,0	x 31,0	1 000
8,2	x 12,0	x 32,0	1 000
8,2	x 12,0	x 33,0	1 000
8,2	x 12,0	x 34,0	1 000
8,2	x 12,0	x 35,0	1 000
8,2	x 12,0	x 36,0	1 000
8,2	x 12,0	x 37,0	1 000
8,2	x 12,0	x 38,0	1 000
8,2	x 12,0	x 39,0	1 000
8,2	x 12,0	x 40,0	1 000



Black nylon



Nylon glass filled



PE



PP



POM



PS

h	Unit of sale
2,0	1 000
3,0	1 000
4,0	1 000
5,0	1 000
6,0	1 000
7,0	1 000
7,5	5 000
8,0	1 000
9,0	1 000
10,0	1 000
11,0	1 000
12,0	1 000
12,5	5 000
13,0	1 000
14,0	1 000
15,0	1 000
16,0	1 000
17,0	1 000
17,5	5 000
18,0	1 000
19,0	1 000
20,0	1 000
21,0	1 000
22,0	1 000
22,5	5 000
23,0	1 000
24,0	1 000
25,0	1 000
26,0	1 000
27,0	1 000
28,0	1 000
29,0	1 000
30,0	1 000

d	D	h	Unit of sale
8,2	x 12,0	x 31,0	1 000
8,2	x 12,0	x 32,0	1 000
8,2	x 12,0	x 33,0	1 000
8,2	x 12,0	x 34,0	1 000
8,2	x 12,0	x 35,0	1 000
8,2	x 12,0	x 36,0	1 000
8,2	x 12,0	x 37,0	1 000
8,2	x 12,0	x 38,0	1 000
8,2	x 12,0	x 39,0	1 000
8,2	x 12,0	x 40,0	1 000
8,2	x 12,0	x 41,0	1 000
8,2	x 12,0	x 42,0	1 000
8,2	x 12,0	x 43,0	1 000
8,2	x 12,0	x 44,0	1 000
8,2	x 12,0	x 45,0	1 000
8,2	x 12,0	x 46,0	1 000
8,2	x 12,0	x 47,0	1 000
8,2	x 12,0	x 48,0	1 000
8,2	x 12,0	x 49,0	1 000
8,2	x 12,0	x 50,0	1 000

d	D	h	Unit of sale
8,2	x 30,0	x 2,0	1 000
8,2	x 30,0	x 3,0	1 000
8,2	x 30,0	x 4,0	1 000
8,2	x 30,0	x 5,0	1 000
8,2	x 30,0	x 6,0	1 000
8,2	x 30,0	x 7,0	1 000
8,2	x 30,0	x 7,5	5 000
8,2	x 30,0	x 8,0	1 000
8,2	x 30,0	x 9,0	1 000
8,2	x 30,0	x 10,0	1 000
8,2	x 30,0	x 11,0	1 000
8,2	x 30,0	x 12,0	1 000
8,2	x 30,0	x 12,5	5 000
8,2	x 30,0	x 13,0	1 000
8,2	x 30,0	x 14,0	1 000
8,2	x 30,0	x 15,0	1 000
8,2	x 30,0	x 16,0	1 000
8,2	x 30,0	x 17,0	1 000
8,2	x 30,0	x 17,5	5 000
8,2	x 30,0	x 18,0	1 000
8,2	x 30,0	x 19,0	1 000
8,2	x 30,0	x 20,0	1 000
8,2	x 30,0	x 21,0	1 000
8,2	x 30,0	x 22,0	1 000
8,2	x 30,0	x 22,5	5 000
8,2	x 30,0	x 23,0	1 000
8,2	x 30,0	x 24,0	1 000
8,2	x 30,0	x 25,0	1 000
8,2	x 30,0	x 26,0	1 000
8,2	x 30,0	x 27,0	1 000
8,2	x 30,0	x 28,0	1 000
8,2	x 30,0	x 29,0	1 000
8,2	x 30,0	x 30,0	1 000



• Product part N° = dimension : d x D x h.

→ Continued next page.



SPACERS > Round spacers d = 8,4

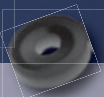
d	D	h	Unit of sale
8,4	x 15,0	x 2,0	1 000
8,4	x 15,0	x 3,0	1 000
8,4	x 15,0	x 4,0	1 000
8,4	x 15,0	x 5,0	1 000
8,4	x 15,0	x 6,0	1 000
8,4	x 15,0	x 7,0	1 000
8,4	x 15,0	x 7,5	5 000
8,4	x 15,0	x 8,0	1 000
8,4	x 15,0	x 9,0	1 000
8,4	x 15,0	x 10,0	1 000
8,4	x 15,0	x 11,0	1 000
8,4	x 15,0	x 12,0	1 000
8,4	x 15,0	x 12,5	5 000
8,4	x 15,0	x 13,0	1 000
8,4	x 15,0	x 14,0	1 000
8,4	x 15,0	x 15,0	1 000
8,4	x 15,0	x 16,0	1 000
8,4	x 15,0	x 17,0	1 000
8,4	x 15,0	x 17,5	5 000
8,4	x 15,0	x 18,0	1 000
8,4	x 15,0	x 19,0	1 000
8,4	x 15,0	x 20,0	1 000
8,4	x 15,0	x 21,0	1 000
8,4	x 15,0	x 22,0	1 000
8,4	x 15,0	x 22,5	5 000
8,4	x 15,0	x 23,0	1 000
8,4	x 15,0	x 24,0	1 000
8,4	x 15,0	x 25,0	1 000
8,4	x 15,0	x 26,0	1 000
8,4	x 15,0	x 27,0	1 000
8,4	x 15,0	x 28,0	1 000
8,4	x 15,0	x 29,0	1 000
8,4	x 15,0	x 30,0	1 000

d	D	h	Unit of sale
8,4	x 16,0	x 2,0	10 000
8,4	x 16,0	x 3,0	10 000
8,4	x 16,0	x 4,0	10 000
8,4	x 16,0	x 5,0	10 000
8,4	x 16,0	x 6,0	10 000
8,4	x 16,0	x 7,0	10 000
8,4	x 16,0	x 7,5	10 000
8,4	x 16,0	x 8,0	10 000
8,4	x 16,0	x 9,0	10 000
8,4	x 16,0	x 10,0	10 000
8,4	x 16,0	x 11,0	10 000
8,4	x 16,0	x 12,0	10 000
8,4	x 16,0	x 12,5	10 000
8,4	x 16,0	x 13,0	10 000
8,4	x 16,0	x 14,0	10 000
8,4	x 16,0	x 15,0	10 000
8,4	x 16,0	x 16,0	10 000
8,4	x 16,0	x 17,0	10 000
8,4	x 16,0	x 17,5	10 000
8,4	x 16,0	x 18,0	10 000
8,4	x 16,0	x 19,0	10 000
8,4	x 16,0	x 20,0	10 000

d	D	h	Unit of sale
8,4	x 17,0	x 2,0	10 000
8,4	x 17,0	x 3,0	10 000
8,4	x 17,0	x 4,0	10 000
8,4	x 17,0	x 5,0	10 000
8,4	x 17,0	x 6,0	10 000
8,4	x 17,0	x 7,0	10 000
8,4	x 17,0	x 7,5	10 000
8,4	x 17,0	x 8,0	10 000
8,4	x 17,0	x 9,0	10 000
8,4	x 17,0	x 10,0	10 000
8,4	x 17,0	x 11,0	10 000
8,4	x 17,0	x 12,0	10 000
8,4	x 17,0	x 12,5	10 000
8,4	x 17,0	x 13,0	10 000
8,4	x 17,0	x 14,0	10 000
8,4	x 17,0	x 15,0	10 000
8,4	x 17,0	x 16,0	10 000
8,4	x 17,0	x 17,0	10 000
8,4	x 17,0	x 17,5	10 000
8,4	x 17,0	x 18,0	10 000
8,4	x 17,0	x 19,0	10 000
8,4	x 17,0	x 20,0	10 000
8,4	x 17,0	x 21,0	10 000
8,4	x 17,0	x 22,0	10 000
8,4	x 17,0	x 22,5	10 000
8,4	x 17,0	x 23,0	10 000
8,4	x 17,0	x 24,0	10 000
8,4	x 17,0	x 25,0	10 000
8,4	x 17,0	x 26,0	10 000
8,4	x 17,0	x 27,0	10 000
8,4	x 17,0	x 28,0	10 000
8,4	x 17,0	x 29,0	10 000
8,4	x 17,0	x 30,0	10 000

Tolerance "D" of the range 8,4 x 16 x ... = - 0,3 mm.





Black nylon



Nylon glass filled



PE



PP



POM



PS

h	Unit of sale
2,0	1 000
3,0	1 000
4,0	1 000
5,0	1 000
6,0	1 000
7,0	1 000
7,5	5 000
8,0	1 000
9,0	1 000
10,0	1 000
11,0	1 000
12,0	1 000
12,5	5 000
13,0	1 000
14,0	1 000
15,0	1 000
16,0	1 000
17,0	1 000
17,5	5 000
18,0	1 000
19,0	1 000
20,0	1 000
21,0	1 000
22,0	1 000
22,5	5 000
23,0	1 000
24,0	1 000
25,0	1 000
26,0	1 000
27,0	1 000
28,0	1 000
29,0	1 000
30,0	1 000

d	D	h	Unit of sale
8,4	x 20,0	x 2,0	1 000
8,4	x 20,0	x 3,0	1 000
8,4	x 20,0	x 4,0	1 000
8,4	x 20,0	x 5,0	1 000
8,4	x 20,0	x 6,0	1 000
8,4	x 20,0	x 7,0	1 000
8,4	x 20,0	x 7,5	5 000
8,4	x 20,0	x 8,0	1 000
8,4	x 20,0	x 9,0	1 000
8,4	x 20,0	x 10,0	1 000
8,4	x 20,0	x 11,0	1 000
8,4	x 20,0	x 12,0	1 000
8,4	x 20,0	x 12,5	5 000
8,4	x 20,0	x 13,0	1 000
8,4	x 20,0	x 14,0	1 000
8,4	x 20,0	x 15,0	1 000
8,4	x 20,0	x 16,0	1 000
8,4	x 20,0	x 17,0	1 000
8,4	x 20,0	x 17,5	5 000
8,4	x 20,0	x 18,0	1 000
8,4	x 20,0	x 19,0	1 000
8,4	x 20,0	x 20,0	1 000
8,4	x 20,0	x 21,0	1 000
8,4	x 20,0	x 22,0	1 000
8,4	x 20,0	x 22,5	5 000
8,4	x 20,0	x 23,0	1 000
8,4	x 20,0	x 24,0	1 000
8,4	x 20,0	x 25,0	1 000
8,4	x 20,0	x 26,0	1 000
8,4	x 20,0	x 27,0	1 000
8,4	x 20,0	x 28,0	1 000
8,4	x 20,0	x 29,0	1 000
8,4	x 20,0	x 30,0	1 000

d	D	h	Unit of sale
8,4	x 25,0	x 2,0	1 000
8,4	x 25,0	x 3,0	1 000
8,4	x 25,0	x 4,0	1 000
8,4	x 25,0	x 5,0	1 000
8,4	x 25,0	x 6,0	1 000
8,4	x 25,0	x 7,0	1 000
8,4	x 25,0	x 7,5	5 000
8,4	x 25,0	x 8,0	1 000
8,4	x 25,0	x 9,0	1 000
8,4	x 25,0	x 10,0	1 000
8,4	x 25,0	x 11,0	1 000
8,4	x 25,0	x 12,0	1 000
8,4	x 25,0	x 12,5	5 000
8,4	x 25,0	x 13,0	1 000
8,4	x 25,0	x 14,0	1 000
8,4	x 25,0	x 15,0	1 000
8,4	x 25,0	x 16,0	1 000
8,4	x 25,0	x 17,0	1 000
8,4	x 25,0	x 17,5	5 000
8,4	x 25,0	x 18,0	1 000
8,4	x 25,0	x 19,0	1 000
8,4	x 25,0	x 20,0	1 000
8,4	x 25,0	x 21,0	1 000
8,4	x 25,0	x 22,0	1 000
8,4	x 25,0	x 22,5	5 000
8,4	x 25,0	x 23,0	1 000
8,4	x 25,0	x 24,0	1 000
8,4	x 25,0	x 25,0	1 000
8,4	x 25,0	x 26,0	1 000
8,4	x 25,0	x 27,0	1 000
8,4	x 25,0	x 28,0	1 000
8,4	x 25,0	x 29,0	1 000
8,4	x 25,0	x 30,0	1 000



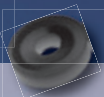


SPACERS > Round spacers d = 10,2 / 10,5 / 12,2



d	D	h	Unit of sale	d	D	h	Unit of sale	d	D
10,2	x 25,0	x 2,0	1 000	10,5	x 15,0	x 2,0	1 000	10,5	x 20,0
10,2	x 25,0	x 3,0	1 000	10,5	x 15,0	x 3,0	1 000	10,5	x 20,0
10,2	x 25,0	x 4,0	1 000	10,5	x 15,0	x 4,0	1 000	10,5	x 20,0
10,2	x 25,0	x 5,0	1 000	10,5	x 15,0	x 5,0	1 000	10,5	x 20,0
10,2	x 25,0	x 6,0	1 000	10,5	x 15,0	x 6,0	1 000	10,5	x 20,0
10,2	x 25,0	x 7,0	1 000	10,5	x 15,0	x 7,0	1 000	10,5	x 20,0
10,2	x 25,0	x 7,5	5 000	10,5	x 15,0	x 7,5	5 000	10,5	x 20,0
10,2	x 25,0	x 8,0	1 000	10,5	x 15,0	x 8,0	1 000	10,5	x 20,0
10,2	x 25,0	x 9,0	1 000	10,5	x 15,0	x 9,0	1 000	10,5	x 20,0
10,2	x 25,0	x 10,0	1 000	10,5	x 15,0	x 10,0	1 000	10,5	x 20,0
10,2	x 25,0	x 11,0	1 000	10,5	x 15,0	x 11,0	1 000	10,5	x 20,0
10,2	x 25,0	x 12,0	1 000	10,5	x 15,0	x 12,0	1 000	10,5	x 20,0
10,2	x 25,0	x 12,5	5 000	10,5	x 15,0	x 12,5	5 000	10,5	x 20,0
10,2	x 25,0	x 13,0	1 000	10,5	x 15,0	x 13,0	1 000	10,5	x 20,0
10,2	x 25,0	x 14,0	1 000	10,5	x 15,0	x 14,0	1 000	10,5	x 20,0
10,2	x 25,0	x 15,0	1 000	10,5	x 15,0	x 15,0	1 000	10,5	x 20,0
10,2	x 25,0	x 16,0	1 000	10,5	x 15,0	x 16,0	1 000	10,5	x 20,0
10,2	x 25,0	x 17,0	1 000	10,5	x 15,0	x 17,0	1 000	10,5	x 20,0
10,2	x 25,0	x 17,5	5 000	10,5	x 15,0	x 17,5	5 000	10,5	x 20,0
10,2	x 25,0	x 18,0	1 000	10,5	x 15,0	x 18,0	1 000	10,5	x 20,0
10,2	x 25,0	x 19,0	1 000	10,5	x 15,0	x 19,0	1 000	10,5	x 20,0
10,2	x 25,0	x 20,0	1 000	10,5	x 15,0	x 20,0	1 000	10,5	x 20,0
10,2	x 25,0	x 21,0	1 000	10,5	x 15,0	x 21,0	1 000	10,5	x 20,0
10,2	x 25,0	x 22,0	1 000	10,5	x 15,0	x 22,0	1 000	10,5	x 20,0
10,2	x 25,0	x 22,5	5 000	10,5	x 15,0	x 22,5	5 000	10,5	x 20,0
10,2	x 25,0	x 23,0	1 000	10,5	x 15,0	x 23,0	1 000	10,5	x 20,0
10,2	x 25,0	x 24,0	1 000	10,5	x 15,0	x 24,0	1 000	10,5	x 20,0
10,2	x 25,0	x 25,0	1 000	10,5	x 15,0	x 25,0	1 000	10,5	x 20,0
10,2	x 25,0	x 26,0	1 000	10,5	x 15,0	x 26,0	1 000	10,5	x 20,0
10,2	x 25,0	x 27,0	1 000	10,5	x 15,0	x 27,0	1 000	10,5	x 20,0
10,2	x 25,0	x 28,0	1 000	10,5	x 15,0	x 28,0	1 000	10,5	x 20,0
10,2	x 25,0	x 29,0	1 000	10,5	x 15,0	x 29,0	1 000	10,5	x 20,0
10,2	x 25,0	x 30,0	1 000	10,5	x 15,0	x 30,0	1 000	10,5	x 20,0

Tolerance "D"



Black nylon



Nylon glass filled



PE



PP



POM



PS

h	Unit of sale	d	D	h	Unit of sale	d	D	h	Unit of sale
2,0	1 000	10,5	x 30,0	x 2,0	1 000	12,2	x 18,0	x 2,0	1 000
3,0	1 000	10,5	x 30,0	x 3,0	1 000	12,2	x 18,0	x 3,0	1 000
4,0	1 000	10,5	x 30,0	x 4,0	1 000	12,2	x 18,0	x 4,0	1 000
5,0	1 000	10,5	x 30,0	x 5,0	1 000	12,2	x 18,0	x 5,0	1 000
6,0	1 000	10,5	x 30,0	x 6,0	1 000	12,2	x 18,0	x 6,0	1 000
7,0	1 000	10,5	x 30,0	x 7,0	1 000	12,2	x 18,0	x 7,0	1 000
7,5	5 000	10,5	x 30,0	x 7,5	2 500	12,2	x 18,0	x 7,5	5 000
8,0	1 000	10,5	x 30,0	x 8,0	1 000	12,2	x 18,0	x 8,0	1 000
9,0	1 000	10,5	x 30,0	x 9,0	1 000	12,2	x 18,0	x 9,0	1 000
10,0	1 000	10,5	x 30,0	x 10,0	1 000	12,2	x 18,0	x 10,0	1 000
11,0	1 000	10,5	x 30,0	x 11,0	1 000	12,2	x 18,0	x 11,0	1 000
12,0	1 000	10,5	x 30,0	x 12,0	1 000	12,2	x 18,0	x 12,0	1 000
12,5	5 000	10,5	x 30,0	x 12,5	2 500	12,2	x 18,0	x 12,5	5 000
13,0	1 000	10,5	x 30,0	x 13,0	1 000	12,2	x 18,0	x 13,0	1 000
14,0	1 000	10,5	x 30,0	x 14,0	1 000	12,2	x 18,0	x 14,0	1 000
15,0	1 000	10,5	x 30,0	x 15,0	1 000	12,2	x 18,0	x 15,0	1 000
16,0	1 000	10,5	x 30,0	x 16,0	1 000	12,2	x 18,0	x 16,0	1 000
17,0	1 000	10,5	x 30,0	x 17,0	1 000	12,2	x 18,0	x 17,0	1 000
17,5	5 000	10,5	x 30,0	x 17,5	2 500	12,2	x 18,0	x 17,5	5 000
18,0	1 000	10,5	x 30,0	x 18,0	1 000	12,2	x 18,0	x 18,0	1 000
19,0	1 000	10,5	x 30,0	x 19,0	1 000	12,2	x 18,0	x 19,0	1 000
20,0	1 000	10,5	x 30,0	x 20,0	1 000	12,2	x 18,0	x 20,0	1 000
21,0	1 000	10,5	x 30,0	x 21,0	1 000	12,2	x 18,0	x 21,0	1 000
22,0	1 000	10,5	x 30,0	x 22,0	1 000	12,2	x 18,0	x 22,0	1 000
22,5	5 000	10,5	x 30,0	x 22,5	2 500	12,2	x 18,0	x 22,5	5 000
23,0	1 000	10,5	x 30,0	x 23,0	1 000	12,2	x 18,0	x 23,0	1 000
24,0	1 000	10,5	x 30,0	x 24,0	1 000	12,2	x 18,0	x 24,0	1 000
25,0	1 000	10,5	x 30,0	x 25,0	1 000	12,2	x 18,0	x 25,0	1 000
26,0	1 000	10,5	x 30,0	x 26,0	1 000	12,2	x 18,0	x 26,0	1 000
27,0	1 000	10,5	x 30,0	x 27,0	1 000	12,2	x 18,0	x 27,0	1 000
28,0	1 000	10,5	x 30,0	x 28,0	1 000	12,2	x 18,0	x 28,0	1 000
29,0	1 000	10,5	x 30,0	x 29,0	1 000	12,2	x 18,0	x 29,0	1 000
30,0	1 000	10,5	x 30,0	x 30,0	1 000	12,2	x 18,0	x 30,0	1 000

= 'D' + 1,0 mm.

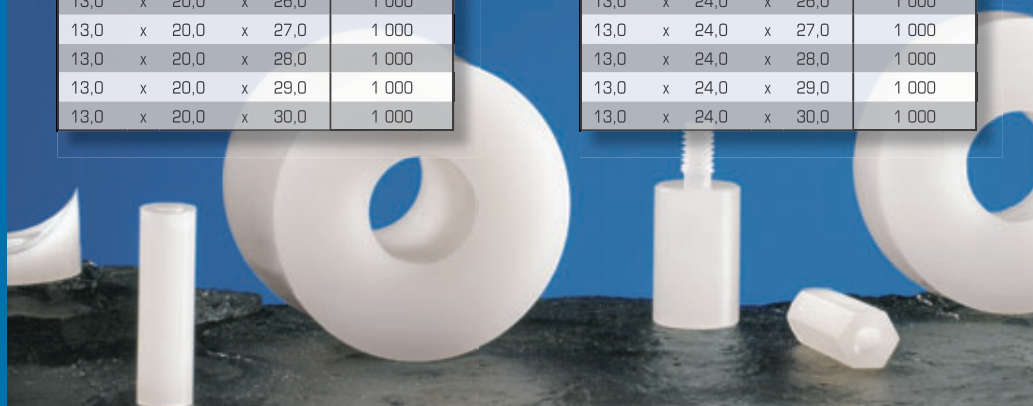
• Product part N° = dimension : d x D x h.

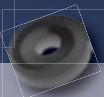
→ Continued next page.

SPACERS > Round spacers d = 13,0 / 16,2

d	D	h	Unit of sale
13,0	x 20,0	x 2,0	1 000
13,0	x 20,0	x 3,0	1 000
13,0	x 20,0	x 4,0	1 000
13,0	x 20,0	x 5,0	1 000
13,0	x 20,0	x 6,0	1 000
13,0	x 20,0	x 7,0	1 000
13,0	x 20,0	x 7,5	5 000
13,0	x 20,0	x 8,0	1 000
13,0	x 20,0	x 9,0	1 000
13,0	x 20,0	x 10,0	1 000
13,0	x 20,0	x 11,0	1 000
13,0	x 20,0	x 12,0	1 000
13,0	x 20,0	x 12,5	5 000
13,0	x 20,0	x 13,0	1 000
13,0	x 20,0	x 14,0	1 000
13,0	x 20,0	x 15,0	1 000
13,0	x 20,0	x 16,0	1 000
13,0	x 20,0	x 17,0	1 000
13,0	x 20,0	x 17,5	5 000
13,0	x 20,0	x 18,0	1 000
13,0	x 20,0	x 19,0	1 000
13,0	x 20,0	x 20,0	1 000
13,0	x 20,0	x 21,0	1 000
13,0	x 20,0	x 22,0	1 000
13,0	x 20,0	x 22,5	5 000
13,0	x 20,0	x 23,0	1 000
13,0	x 20,0	x 24,0	1 000
13,0	x 20,0	x 25,0	1 000
13,0	x 20,0	x 26,0	1 000
13,0	x 20,0	x 27,0	1 000
13,0	x 20,0	x 28,0	1 000
13,0	x 20,0	x 29,0	1 000
13,0	x 20,0	x 30,0	1 000

d	D	h	Unit of sale
13,0	x 24,0	x 2,0	1 000
13,0	x 24,0	x 3,0	1 000
13,0	x 24,0	x 4,0	1 000
13,0	x 24,0	x 5,0	1 000
13,0	x 24,0	x 6,0	1 000
13,0	x 24,0	x 7,0	1 000
13,0	x 24,0	x 7,5	5 000
13,0	x 24,0	x 8,0	1 000
13,0	x 24,0	x 9,0	1 000
13,0	x 24,0	x 10,0	1 000
13,0	x 24,0	x 11,0	1 000
13,0	x 24,0	x 12,0	1 000
13,0	x 24,0	x 12,5	5 000
13,0	x 24,0	x 13,0	1 000
13,0	x 24,0	x 14,0	1 000
13,0	x 24,0	x 15,0	1 000
13,0	x 24,0	x 16,0	1 000
13,0	x 24,0	x 17,0	1 000
13,0	x 24,0	x 17,5	5 000
13,0	x 24,0	x 18,0	1 000
13,0	x 24,0	x 19,0	1 000
13,0	x 24,0	x 20,0	1 000
13,0	x 24,0	x 21,0	1 000
13,0	x 24,0	x 22,0	1 000
13,0	x 24,0	x 22,5	5 000
13,0	x 24,0	x 23,0	1 000
13,0	x 24,0	x 24,0	1 000
13,0	x 24,0	x 25,0	1 000
13,0	x 24,0	x 26,0	1 000
13,0	x 24,0	x 27,0	1 000
13,0	x 24,0	x 28,0	1 000
13,0	x 24,0	x 29,0	1 000
13,0	x 24,0	x 30,0	1 000





Black nylon



Nylon glass filled



PE



PP



POM



PS

d	D	h	Unit of sale
13,0	x 35,0	x 2,0	1 000
13,0	x 35,0	x 3,0	1 000
13,0	x 35,0	x 4,0	1 000
13,0	x 35,0	x 5,0	1 000
13,0	x 35,0	x 6,0	1 000
13,0	x 35,0	x 7,0	1 000
13,0	x 35,0	x 7,5	1 000
13,0	x 35,0	x 8,0	1 000
13,0	x 35,0	x 9,0	1 000
13,0	x 35,0	x 10,0	1 000
13,0	x 35,0	x 11,0	1 000
13,0	x 35,0	x 12,0	1 000
13,0	x 35,0	x 12,5	1 000
13,0	x 35,0	x 13,0	1 000
13,0	x 35,0	x 14,0	1 000
13,0	x 35,0	x 15,0	1 000
13,0	x 35,0	x 16,0	1 000
13,0	x 35,0	x 17,0	1 000
13,0	x 35,0	x 17,5	1 000
13,0	x 35,0	x 18,0	1 000
13,0	x 35,0	x 19,0	1 000
13,0	x 35,0	x 20,0	1 000
13,0	x 35,0	x 21,0	1 000
13,0	x 35,0	x 22,0	1 000
13,0	x 35,0	x 22,5	1 000
13,0	x 35,0	x 23,0	1 000
13,0	x 35,0	x 24,0	1 000
13,0	x 35,0	x 25,0	1 000
13,0	x 35,0	x 26,0	1 000
13,0	x 35,0	x 27,0	1 000
13,0	x 35,0	x 28,0	1 000
13,0	x 35,0	x 29,0	1 000
13,0	x 35,0	x 30,0	1 000

d	D	h	Unit of sale
16,2	x 32,0	x 2,0	1 000
16,2	x 32,0	x 3,0	1 000
16,2	x 32,0	x 4,0	1 000
16,2	x 32,0	x 5,0	1 000
16,2	x 32,0	x 6,0	1 000
16,2	x 32,0	x 7,0	1 000
16,2	x 32,0	x 7,5	1 000
16,2	x 32,0	x 8,0	1 000
16,2	x 32,0	x 9,0	1 000
16,2	x 32,0	x 10,0	1 000
16,2	x 32,0	x 11,0	1 000
16,2	x 32,0	x 12,0	1 000
16,2	x 32,0	x 12,5	1 000
16,2	x 32,0	x 13,0	1 000
16,2	x 32,0	x 14,0	1 000
16,2	x 32,0	x 15,0	1 000
16,2	x 32,0	x 16,0	1 000
16,2	x 32,0	x 17,0	1 000
16,2	x 32,0	x 17,5	1 000
16,2	x 32,0	x 18,0	1 000
16,2	x 32,0	x 19,0	1 000
16,2	x 32,0	x 20,0	1 000
16,2	x 32,0	x 21,0	1 000
16,2	x 32,0	x 22,0	1 000
16,2	x 32,0	x 22,5	1 000
16,2	x 32,0	x 23,0	1 000
16,2	x 32,0	x 24,0	1 000
16,2	x 32,0	x 25,0	1 000
16,2	x 32,0	x 26,0	1 000
16,2	x 32,0	x 27,0	1 000
16,2	x 32,0	x 28,0	1 000
16,2	x 32,0	x 29,0	1 000
16,2	x 32,0	x 30,0	1 000

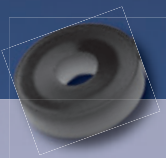


SPACERS > Round spacers d = 16,5 / 20,0

d	D	h	Unit of sale
16,5	x 24,0	x 2,0	1 000
16,5	x 24,0	x 3,0	1 000
16,5	x 24,0	x 4,0	1 000
16,5	x 24,0	x 5,0	1 000
16,5	x 24,0	x 6,0	1 000
16,5	x 24,0	x 7,0	1 000
16,5	x 24,0	x 7,5	2 500
16,5	x 24,0	x 8,0	1 000
16,5	x 24,0	x 9,0	1 000
16,5	x 24,0	x 10,0	1 000
16,5	x 24,0	x 11,0	1 000
16,5	x 24,0	x 12,0	1 000
16,5	x 24,0	x 12,5	2 500
16,5	x 24,0	x 13,0	1 000
16,5	x 24,0	x 14,0	1 000
16,5	x 24,0	x 15,0	1 000
16,5	x 24,0	x 16,0	1 000
16,5	x 24,0	x 17,0	1 000
16,5	x 24,0	x 17,5	2 500
16,5	x 24,0	x 18,0	1 000
16,5	x 24,0	x 19,0	1 000
16,5	x 24,0	x 20,0	1 000
16,5	x 24,0	x 21,0	1 000
16,5	x 24,0	x 22,0	1 000
16,5	x 24,0	x 22,5	2 500
16,5	x 24,0	x 23,0	1 000
16,5	x 24,0	x 24,0	1 000
16,5	x 24,0	x 25,0	1 000
16,5	x 24,0	x 26,0	1 000
16,5	x 24,0	x 27,0	1 000
16,5	x 24,0	x 28,0	1 000
16,5	x 24,0	x 29,0	1 000
16,5	x 24,0	x 30,0	1 000
16,5	x 24,0	x 31,0	1 000
16,5	x 24,0	x 32,0	1 000
16,5	x 24,0	x 33,0	1 000
16,5	x 24,0	x 34,0	1 000
16,5	x 24,0	x 35,0	1 000
16,5	x 24,0	x 36,0	1 000
16,5	x 24,0	x 37,0	1 000
16,5	x 24,0	x 38,0	1 000
16,5	x 24,0	x 39,0	1 000
16,5	x 24,0	x 40,0	1 000

d	D	h	Unit of sale
20,0	x 28,0	x 2,0	1 000
20,0	x 28,0	x 3,0	1 000
20,0	x 28,0	x 4,0	1 000
20,0	x 28,0	x 5,0	1 000
20,0	x 28,0	x 6,0	1 000
20,0	x 28,0	x 7,0	1 000
20,0	x 28,0	x 7,5	2 500
20,0	x 28,0	x 8,0	1 000
20,0	x 28,0	x 9,0	1 000
20,0	x 28,0	x 10,0	1 000
20,0	x 28,0	x 11,0	1 000
20,0	x 28,0	x 12,0	1 000
20,0	x 28,0	x 12,5	2 500
20,0	x 28,0	x 13,0	1 000
20,0	x 28,0	x 14,0	1 000
20,0	x 28,0	x 15,0	1 000
20,0	x 28,0	x 16,0	1 000
20,0	x 28,0	x 17,0	1 000
20,0	x 28,0	x 17,5	2 500
20,0	x 28,0	x 18,0	1 000
20,0	x 28,0	x 19,0	1 000
20,0	x 28,0	x 20,0	1 000
20,0	x 28,0	x 21,0	1 000
20,0	x 28,0	x 22,0	1 000
20,0	x 28,0	x 22,5	2 500
20,0	x 28,0	x 23,0	1 000
20,0	x 28,0	x 24,0	1 000
20,0	x 28,0	x 25,0	1 000
20,0	x 28,0	x 26,0	1 000
20,0	x 28,0	x 27,0	1 000
20,0	x 28,0	x 28,0	1 000
20,0	x 28,0	x 29,0	1 000
20,0	x 28,0	x 30,0	1 000





Black nylon



Nylon glass filled



PE



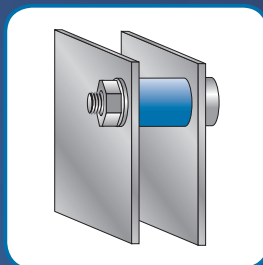
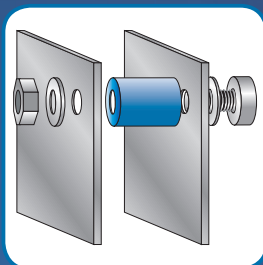
PP



POM



PS



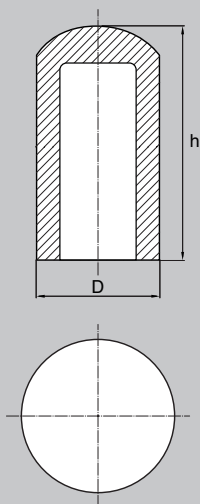
Other dimensions on request.
Contact us at : bulte@bulte.com

Other materials on request.

Product part N° = dimension : d x D x h.



SPACERS > Hollow pins D = 6,0 / 8,0 / 10,0



D	h	Unit of sale	Part N°
6,0	6,0	1 000	G66
6,0	8,0	1 000	G68
6,0	10,0	1 000	G610
6,0	15,0	1 000	G615
6,0	20,0	1 000	G620
6,0	25,0	1 000	G625
6,0	30,0	1 000	G630

8,0	6,0	1 000	G86
8,0	8,0	1 000	G88
8,0	10,0	1 000	G810
8,0	15,0	1 000	G815
8,0	20,0	1 000	G820
8,0	25,0	1 000	G825
8,0	30,0	1 000	G830

10,0	6,0	1 000	G106
10,0	8,0	1 000	G108
10,0	10,0	1 000	G1010
10,0	15,0	1 000	G1015
10,0	20,0	1 000	G1020
10,0	25,0	1 000	G1025
10,0	30,0	1 000	G1030

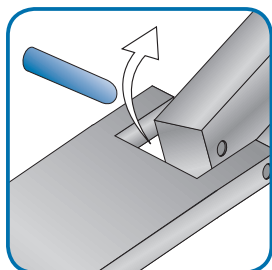
108

> Good mechanical properties.

> Rustproof and light.

> Resistant to temperature between - 30°C and + 100°C.

Intermediate lengths on request.



MATERIALS - COLOURS

STANDARD :

- Natural nylon.

ON REQUEST :

- Black Nylon / Nylon glass filled / PE / PP / POM / Black PE.
Minimum quantity on request.
- Colours : see RAL colour chart page 510 / 511.



109



Black nylon



Nylon glass filled



PE



PP



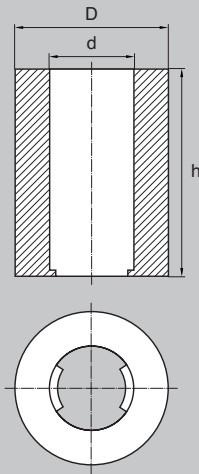
POM



Black PE



SPACERS > Retaining spacers d = 3,2



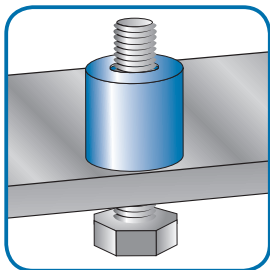
M	d	D	h	Unit of sale	Part N°
M3	3,2	6,0	5,0	10 000	EI032060050
M3	3,2	6,0	6,0	10 000	EI032060060
M3	3,2	6,0	7,0	10 000	EI032060070
M3	3,2	6,0	7,5	10 000	EI032060075
M3	3,2	6,0	8,0	10 000	EI032060080
M3	3,2	6,0	9,0	10 000	EI032060090
M3	3,2	6,0	10,0	10 000	EI032060100
M3	3,2	6,0	11,0	10 000	EI032060110
M3	3,2	6,0	12,0	10 000	EI032060120
M3	3,2	6,0	12,5	10 000	EI032060125
M3	3,2	6,0	13,0	10 000	EI032060130
M3	3,2	6,0	14,0	10 000	EI032060140
M3	3,2	6,0	15,0	10 000	EI032060150
M3	3,2	6,0	16,0	10 000	EI032060160
M3	3,2	6,0	17,0	10 000	EI032060170
M3	3,2	6,0	17,5	10 000	EI032060175
M3	3,2	6,0	18,0	10 000	EI032060180
M3	3,2	6,0	19,0	10 000	EI032060190
M3	3,2	6,0	20,0	10 000	EI032060200
M3	3,2	6,0	21,0	10 000	EI032060210
M3	3,2	6,0	22,0	10 000	EI032060220
M3	3,2	6,0	22,5	10 000	EI032060225
M3	3,2	6,0	23,0	10 000	EI032060230
M3	3,2	6,0	24,0	10 000	EI032060240
M3	3,2	6,0	25,0	10 000	EI032060250
M3	3,2	6,0	26,0	10 000	EI032060260
M3	3,2	6,0	27,0	10 000	EI032060270
M3	3,2	6,0	28,0	10 000	EI032060280
M3	3,2	6,0	29,0	10 000	EI032060290
M3	3,2	6,0	30,0	10 000	EI032060300

1 1 0

> Used for pre-assembly of screws and bolts with no risk of loss.

> Good electric insulation.

> Ideal for insulation.



M = for thread M3.

Other dimensions and lengths (h) on request.

General tolerance : +/-0.2 mm depending on the material.

Lengths (h) : 2.5 / 3.0 / 3.5 / 4.0 – see page 44.

→ Continued next page.

MATERIALS - COLOURS

STANDARD :

- Natural nylon.

ON REQUEST :

- Black Nylon / Nylon glass filled / PE / PP / POM / Black PE.
Minimum quantity on request.
- Colours : see RAL colour chart page 510 / 511.



Black nylon



Nylon glass filled



PE



PP



POM



Black PE



SPACERS > Retaining spacers d = 4,3 / 5,3

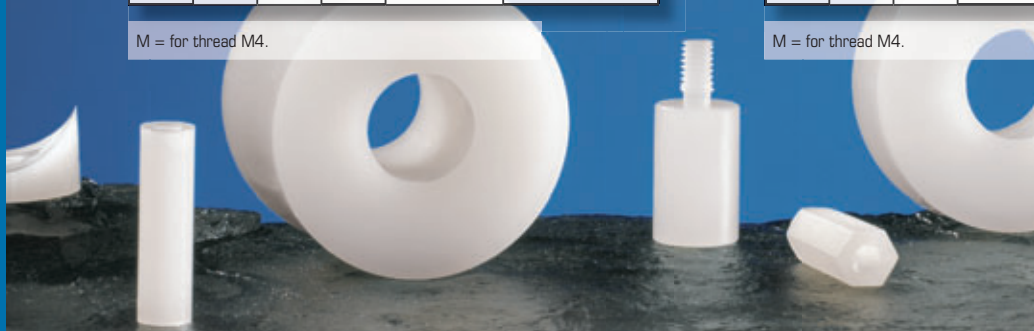


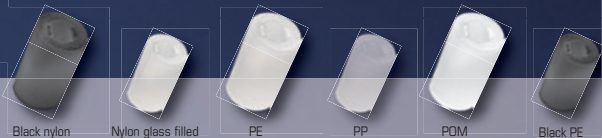
M	d	D	h	Unit of sale	Part N°
M4	4,3	8,0	5,0	10 000	EIO43080050
M4	4,3	8,0	6,0	10 000	EIO43080060
M4	4,3	8,0	7,0	10 000	EIO43080070
M4	4,3	8,0	7,5	10 000	EIO43080075
M4	4,3	8,0	8,0	10 000	EIO43080080
M4	4,3	8,0	9,0	10 000	EIO43080090
M4	4,3	8,0	10,0	10 000	EIO43080100
M4	4,3	8,0	11,0	10 000	EIO43080110
M4	4,3	8,0	12,0	10 000	EIO43080120
M4	4,3	8,0	12,5	10 000	EIO43080125
M4	4,3	8,0	13,0	10 000	EIO43080130
M4	4,3	8,0	14,0	10 000	EIO43080140
M4	4,3	8,0	15,0	10 000	EIO43080150
M4	4,3	8,0	16,0	10 000	EIO43080160
M4	4,3	8,0	17,0	10 000	EIO43080170
M4	4,3	8,0	17,5	10 000	EIO43080175
M4	4,3	8,0	18,0	10 000	EIO43080180
M4	4,3	8,0	19,0	10 000	EIO43080190
M4	4,3	8,0	20,0	10 000	EIO43080200
M4	4,3	8,0	21,0	10 000	EIO43080210
M4	4,3	8,0	22,0	10 000	EIO43080220
M4	4,3	8,0	22,5	10 000	EIO43080225
M4	4,3	8,0	23,0	10 000	EIO43080230
M4	4,3	8,0	24,0	10 000	EIO43080240
M4	4,3	8,0	25,0	10 000	EIO43080250
M4	4,3	8,0	26,0	10 000	EIO43080260
M4	4,3	8,0	27,0	10 000	EIO43080270
M4	4,3	8,0	28,0	10 000	EIO43080280
M4	4,3	8,0	29,0	10 000	EIO43080290
M4	4,3	8,0	30,0	10 000	EIO43080300

M = for thread M4.

M	d	D	h
M4	4,3	10,0	5,0
M4	4,3	10,0	6,0
M4	4,3	10,0	7,0
M4	4,3	10,0	7,5
M4	4,3	10,0	8,0
M4	4,3	10,0	9,0
M4	4,3	10,0	10,0
M4	4,3	10,0	11,0
M4	4,3	10,0	12,0
M4	4,3	10,0	12,5
M4	4,3	10,0	13,0
M4	4,3	10,0	14,0
M4	4,3	10,0	15,0
M4	4,3	10,0	16,0
M4	4,3	10,0	17,0
M4	4,3	10,0	17,5
M4	4,3	10,0	18,0
M4	4,3	10,0	19,0
M4	4,3	10,0	20,0
M4	4,3	10,0	21,0
M4	4,3	10,0	22,0
M4	4,3	10,0	22,5
M4	4,3	10,0	23,0
M4	4,3	10,0	24,0
M4	4,3	10,0	25,0
M4	4,3	10,0	26,0
M4	4,3	10,0	27,0
M4	4,3	10,0	28,0
M4	4,3	10,0	29,0
M4	4,3	10,0	30,0

M = for thread M4.





Black nylon

Nylon glass filled

PE

PP

POM

Black PE

Unit of sale	Part N°
10 000	EI043100050
10 000	EI043100060
10 000	EI043100070
10 000	EI043100075
10 000	EI043100080
10 000	EI043100090
10 000	EI043100100
10 000	EI043100110
10 000	EI043100120
10 000	EI043100125
10 000	EI043100130
10 000	EI043100140
10 000	EI043100150
10 000	EI043100160
10 000	EI043100170
10 000	EI043100175
10 000	EI043100180
10 000	EI043100190
10 000	EI043100200
10 000	EI043100210
10 000	EI043100220
10 000	EI043100225
10 000	EI043100230
10 000	EI043100240
10 000	EI043100250
10 000	EI043100260
10 000	EI043100270
10 000	EI043100280
10 000	EI043100290
10 000	EI043100300

M	d	D	h	Unit of sale	Part N°
M5	5,3	10,0	5,0	10 000	EI053100050
M5	5,3	10,0	6,0	10 000	EI053100060
M5	5,3	10,0	7,0	10 000	EI053100070
M5	5,3	10,0	7,5	10 000	EI053100075
M5	5,3	10,0	8,0	10 000	EI053100080
M5	5,3	10,0	9,0	10 000	EI053100090
M5	5,3	10,0	10,0	10 000	EI053100100
M5	5,3	10,0	11,0	10 000	EI053100110
M5	5,3	10,0	12,0	10 000	EI053100120
M5	5,3	10,0	12,5	10 000	EI053100125
M5	5,3	10,0	13,0	10 000	EI053100130
M5	5,3	10,0	14,0	10 000	EI053100140
M5	5,3	10,0	15,0	10 000	EI053100150
M5	5,3	10,0	16,0	10 000	EI053100160
M5	5,3	10,0	17,0	10 000	EI053100170
M5	5,3	10,0	17,5	10 000	EI053100175
M5	5,3	10,0	18,0	10 000	EI053100180
M5	5,3	10,0	19,0	10 000	EI053100190
M5	5,3	10,0	20,0	10 000	EI053100200
M5	5,3	10,0	21,0	10 000	EI053100210
M5	5,3	10,0	22,0	10 000	EI053100220
M5	5,3	10,0	22,5	10 000	EI053100225
M5	5,3	10,0	23,0	10 000	EI053100230
M5	5,3	10,0	24,0	10 000	EI053100240
M5	5,3	10,0	25,0	10 000	EI053100250
M5	5,3	10,0	26,0	10 000	EI053100260
M5	5,3	10,0	27,0	10 000	EI053100270
M5	5,3	10,0	28,0	10 000	EI053100280
M5	5,3	10,0	29,0	10 000	EI053100290
M5	5,3	10,0	30,0	10 000	EI053100300

M = for thread M5.

→ Continued next page.

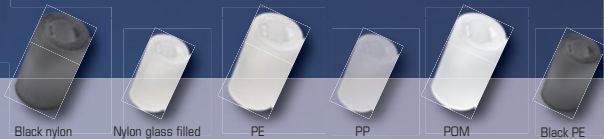
SPACERS > Retaining spacers d = 6,4 / 8,4 / 10,5

M	d	D	h	Unit of sale	Part N°
M6	6,4	12,0	5,0	10 000	EIO64120050
M6	6,4	12,0	6,0	10 000	EIO64120060
M6	6,4	12,0	7,0	10 000	EIO64120070
M6	6,4	12,0	7,5	10 000	EIO64120075
M6	6,4	12,0	8,0	10 000	EIO64120080
M6	6,4	12,0	9,0	10 000	EIO64120090
M6	6,4	12,0	10,0	10 000	EIO64120100
M6	6,4	12,0	11,0	10 000	EIO64120110
M6	6,4	12,0	12,0	10 000	EIO64120120
M6	6,4	12,0	12,5	10 000	EIO64120125
M6	6,4	12,0	13,0	10 000	EIO64120130
M6	6,4	12,0	14,0	10 000	EIO64120140
M6	6,4	12,0	15,0	10 000	EIO64120150
M6	6,4	12,0	16,0	10 000	EIO64120160
M6	6,4	12,0	17,0	10 000	EIO64120170
M6	6,4	12,0	17,5	10 000	EIO64120175
M6	6,4	12,0	18,0	10 000	EIO64120180
M6	6,4	12,0	19,0	10 000	EIO64120190
M6	6,4	12,0	20,0	10 000	EIO64120200
M6	6,4	12,0	21,0	10 000	EIO64120210
M6	6,4	12,0	22,0	10 000	EIO64120220
M6	6,4	12,0	22,5	10 000	EIO64120225
M6	6,4	12,0	23,0	10 000	EIO64120230
M6	6,4	12,0	24,0	10 000	EIO64120240
M6	6,4	12,0	25,0	10 000	EIO64120250
M6	6,4	12,0	26,0	10 000	EIO64120260
M6	6,4	12,0	27,0	10 000	EIO64120270
M6	6,4	12,0	28,0	10 000	EIO64120280
M6	6,4	12,0	29,0	10 000	EIO64120290
M6	6,4	12,0	30,0	10 000	EIO64120300

M	d	D	h
M8	8,4	17,0	5,0
M8	8,4	17,0	6,0
M8	8,4	17,0	7,0
M8	8,4	17,0	7,5
M8	8,4	17,0	8,0
M8	8,4	17,0	9,0
M8	8,4	17,0	10,0
M8	8,4	17,0	11,0
M8	8,4	17,0	12,0
M8	8,4	17,0	12,5
M8	8,4	17,0	13,0
M8	8,4	17,0	14,0
M8	8,4	17,0	15,0
M8	8,4	17,0	16,0
M8	8,4	17,0	17,0
M8	8,4	17,0	17,5
M8	8,4	17,0	18,0
M8	8,4	17,0	19,0
M8	8,4	17,0	20,0
M8	8,4	17,0	21,0
M8	8,4	17,0	22,0
M8	8,4	17,0	22,5
M8	8,4	17,0	23,0
M8	8,4	17,0	24,0
M8	8,4	17,0	25,0
M8	8,4	17,0	26,0
M8	8,4	17,0	27,0
M8	8,4	17,0	28,0
M8	8,4	17,0	29,0
M8	8,4	17,0	30,0

Tolerance "D" of the range 6,4 x 12 x ... = + 0,5 mm.
M = for thread M6.

M = for thread M8.

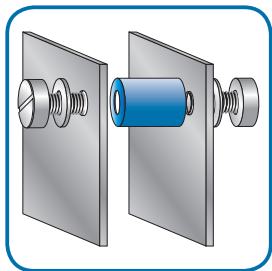
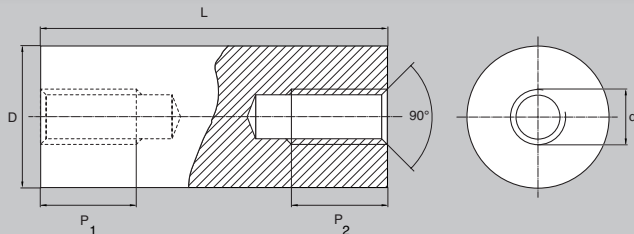


Unit of sale	Part N°
10 000	EI084170050
10 000	EI084170060
10 000	EI084170070
10 000	EI084170075
10 000	EI084170080
10 000	EI084170090
10 000	EI084170100
10 000	EI084170110
10 000	EI084170120
10 000	EI084170125
10 000	EI084170130
10 000	EI084170140
10 000	EI084170150
10 000	EI084170160
10 000	EI084170170
10 000	EI084170175
10 000	EI084170180
10 000	EI084170190
10 000	EI084170200
10 000	EI084170210
10 000	EI084170220
10 000	EI084170225
10 000	EI084170230
10 000	EI084170240
10 000	EI084170250
10 000	EI084170260
10 000	EI084170270
10 000	EI084170280
10 000	EI084170290
10 000	EI084170300

M	d	D	h	Unit of sale	Part N°
M10	10,5	20,0	5,0	10 000	EI105200050
M10	10,5	20,0	6,0	10 000	EI105200060
M10	10,5	20,0	7,0	10 000	EI105200070
M10	10,5	20,0	7,5	10 000	EI105200075
M10	10,5	20,0	8,0	10 000	EI105200080
M10	10,5	20,0	9,0	10 000	EI105200090
M10	10,5	20,0	10,0	10 000	EI105200100
M10	10,5	20,0	11,0	10 000	EI105200110
M10	10,5	20,0	12,0	10 000	EI105200120
M10	10,5	20,0	12,5	10 000	EI105200125
M10	10,5	20,0	13,0	10 000	EI105200130
M10	10,5	20,0	14,0	10 000	EI105200140
M10	10,5	20,0	15,0	10 000	EI105200150
M10	10,5	20,0	16,0	10 000	EI105200160
M10	10,5	20,0	17,0	10 000	EI105200170
M10	10,5	20,0	17,5	10 000	EI105200175
M10	10,5	20,0	18,0	10 000	EI105200180
M10	10,5	20,0	19,0	10 000	EI105200190
M10	10,5	20,0	20,0	10 000	EI105200200
M10	10,5	20,0	21,0	10 000	EI105200210
M10	10,5	20,0	22,0	10 000	EI105200220
M10	10,5	20,0	22,5	10 000	EI105200225
M10	10,5	20,0	23,0	10 000	EI105200230
M10	10,5	20,0	24,0	10 000	EI105200240
M10	10,5	20,0	25,0	10 000	EI105200250
M10	10,5	20,0	26,0	10 000	EI105200260
M10	10,5	20,0	27,0	10 000	EI105200270
M10	10,5	20,0	28,0	10 000	EI105200280
M10	10,5	20,0	29,0	10 000	EI105200290
M10	10,5	20,0	30,0	10 000	EI105200300

Tolerance "D" of the range 10,5 x 20,0 x ... = + 1,0 mm.
M = for thread M10.

SPACERS > Metric round tapped spacers M3



d	D	P1- P2	L	Unit of sale	Part N°
M3	6,0	L	5,0	1 000	ETM365
M3	6,0	L	6,0	1 000	ETM366
M3	6,0	L	8,0	1 000	ETM368
M3	6,0	L	10,0	1 000	ETM3610
M3	6,0	L	12,0	1 000	ETM3612
M3	6,0	L	15,0	1 000	ETM3615
M3	6,0	L	18,0	1 000	ETM3618
M3	6,0	L	20,0	1 000	ETM3620
M3	6,0	10,0	25,0	1 000	ETM3625
M3	6,0	10,0	30,0	1 000	ETM3630
M3	6,0	10,0	35,0	1 000	ETM3635
M3	6,0	10,0	40,0	1 000	ETM3640
M3	6,0	10,0	45,0	1 000	ETM3645
M3	6,0	10,0	50,0	1 000	ETM3650
M3	6,0	10,0	55,0	1 000	ETM3655
M3	6,0	10,0	60,0	1 000	ETM3660

Intermediate lengths on request.

→ Continued next page.

116

> The spacer allows a constant gap between 2 components.

> It is insulating and absorbs vibrations.

> It is heat resistant and can withstand variations in temperature from - 30°C to + 110°C.

MATERIALS - COLOURS

STANDARD :

- Natural POM.

ON REQUEST :

- Black POM / Natural nylon / Black nylon / PTFE / PS.
Minimum quantity on request.
- Colours : see RAL colour chart page 510 / 511.



117



Black POM



Natural Nylon



Black nylon



PTFE



PS



SPACERS > Metric round tapped spacers M4 / M5

d	D	P1-P2	L	Unit of sale	Part N°
M4	8,0	L	5,0	1 000	ETM485
M4	8,0	L	6,0	1 000	ETM486
M4	8,0	L	8,0	1 000	ETM488
M4	8,0	L	10,0	1 000	ETM4810
M4	8,0	L	12,0	1 000	ETM4812
M4	8,0	L	15,0	1 000	ETM4815
M4	8,0	L	18,0	1 000	ETM4818
M4	8,0	L	20,0	1 000	ETM4820
M4	8,0	10,0	25,0	1 000	ETM4825
M4	8,0	10,0	30,0	1 000	ETM4830
M4	8,0	10,0	35,0	1 000	ETM4835
M4	8,0	10,0	40,0	1 000	ETM4840
M4	8,0	10,0	45,0	1 000	ETM4845
M4	8,0	10,0	50,0	1 000	ETM4850
M4	8,0	10,0	55,0	1 000	ETM4855
M4	8,0	10,0	60,0	1 000	ETM4860

M5	10,0	L	5,0	1 000	ETM5105
M5	10,0	L	6,0	1 000	ETM5106
M5	10,0	L	8,0	1 000	ETM5108
M5	10,0	L	10,0	1 000	ETM51010
M5	10,0	L	12,0	1 000	ETM51012
M5	10,0	L	15,0	1 000	ETM51015
M5	10,0	L	18,0	1 000	ETM51018
M5	10,0	L	20,0	1 000	ETM51020
M5	10,0	10,0	25,0	1 000	ETM51025
M5	10,0	10,0	30,0	1 000	ETM51030
M5	10,0	10,0	35,0	1 000	ETM51035
M5	10,0	10,0	40,0	1 000	ETM51040
M5	10,0	10,0	45,0	1 000	ETM51045
M5	10,0	10,0	50,0	1 000	ETM51050
M5	10,0	10,0	55,0	1 000	ETM51055
M5	10,0	10,0	60,0	1 000	ETM51060





Black POM



Natural Nylon



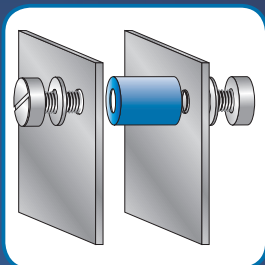
Black nylon



PTFE



PS

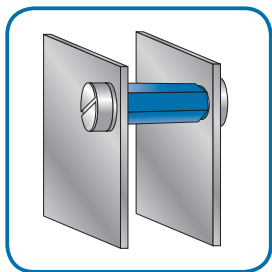
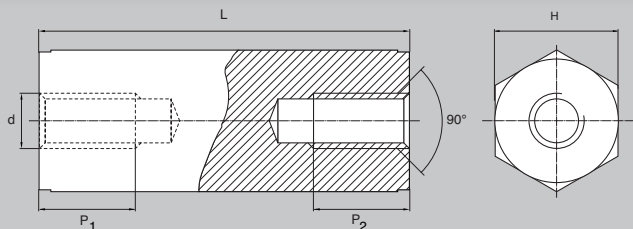


M6, M8, M10 on request.
Contact us at : bulte@bulte.com

Other materials on request.



SPACERS > Metric hex tapped spacers M2,5 / M3



d	H	P1- P2	L	Unit of sale	Part N°
M2,5	5,0	L	5,0	1 000	ETM2,5558BHEX
M2,5	5,0	L	6,0	1 000	ETM2,5568BHEX
M2,5	5,0	L	8,0	1 000	ETM2,5588BHEX
M2,5	5,0	L	10,0	1 000	ETM2,5510BHEX
M2,5	5,0	L	12,0	1 000	ETM2,5512BHEX
M2,5	5,0	L	15,0	1 000	ETM2,5515BHEX
M2,5	5,0	9,0	20,0	1 000	ETM2,5520BHEX
M2,5	5,0	10,0	25,0	1 000	ETM2,5525BHEX
M2,5	5,0	10,0	30,0	1 000	ETM2,5530BHEX

M3	6,0	L	5,0	1 000	ETM365BHEX
M3	6,0	L	6,0	1 000	ETM366BHEX
M3	6,0	L	8,0	1 000	ETM368BHEX
M3	6,0	L	10,0	1 000	ETM3610BHEX
M3	6,0	L	12,0	1 000	ETM3612BHEX
M3	6,0	L	15,0	1 000	ETM3615BHEX
M3	6,0	9,0	20,0	1 000	ETM3620BHEX
M3	6,0	10,0	25,0	1 000	ETM3625BHEX
M3	6,0	10,0	30,0	1 000	ETM3630BHEX
M3	6,0	10,0	35,0	1 000	ETM3635BHEX
M3	6,0	10,0	40,0	1 000	ETM3640BHEX
M3	6,0	10,0	45,0	1 000	ETM3645BHEX
M3	6,0	10,0	50,0	1 000	ETM3650BHEX

→ Continued next page.

120

> The spacers allows a constant gap between 2 components

> It is insulating and absorbs vibrations.

> It is heat resistant and can withstand variations in temperature from -30°C to +110°C.

MATERIALS - COLOURS

STANDARD :

- Black Nylon glass filled.

ON REQUEST :

- Nylon natural, blue, green, red, yellow...



Natural Nylon



Blue Nylon



Green Nylon



Red Nylon



Yellow Nylon



SPACERS > Metric hex tapped spacers M4 / M5

d	H	P1-P2	L	Unit of sale	Part N°
M4	8,0	L	5,0	1 000	ETM485BHEX
M4	8,0	L	6,0	1 000	ETM486BHEX
M4	8,0	L	8,0	1 000	ETM488BHEX
M4	8,0	L	10,0	1 000	ETM4810BHEX
M4	8,0	L	12,0	1 000	ETM4812BHEX
M4	8,0	L	15,0	1 000	ETM4815BHEX
M4	8,0	L	18,0	1 000	ETM4818BHEX
M4	8,0	L	20,0	1 000	ETM4820BHEX
M4	8,0	10,0	25,0	1 000	ETM4825BHEX
M4	8,0	10,0	30,0	1 000	ETM4830BHEX
M4	8,0	10,0	35,0	1 000	ETM4835BHEX
M4	8,0	10,0	40,0	1 000	ETM4840BHEX
M4	8,0	10,0	45,0	1 000	ETM4845BHEX
M4	8,0	10,0	50,0	1 000	ETM4850BHEX

M5	10,0	L	5,0	1 000	ETM5105BHEX
M5	10,0	L	6,0	1 000	ETM5106BHEX
M5	10,0	L	8,0	1 000	ETM5108BHEX
M5	10,0	L	10,0	1 000	ETM51010BHEX
M5	10,0	L	12,0	1 000	ETM51012BHEX
M5	10,0	L	15,0	1 000	ETM51015BHEX
M5	10,0	L	20,0	1 000	ETM51020BHEX
M5	10,0	10,0	25,0	1 000	ETM51025BHEX
M5	10,0	10,0	30,0	1 000	ETM51030BHEX
M5	10,0	10,0	35,0	1 000	ETM51035BHEX
M5	10,0	10,0	40,0	1 000	ETM51040BHEX
M5	10,0	10,0	45,0	1 000	ETM51045BHEX
M5	10,0	10,0	50,0	1 000	ETM51050BHEX
M5	10,0	10,0	60,0	1 000	ETM51060BHEX





Natural Nylon



Blue Nylon



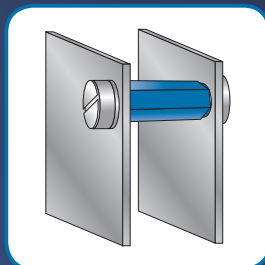
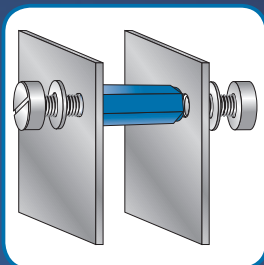
Green Nylon



Red Nylon



Yellow Nylon

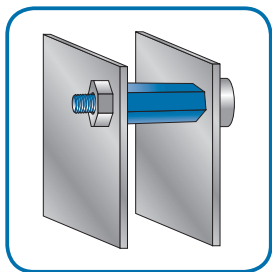
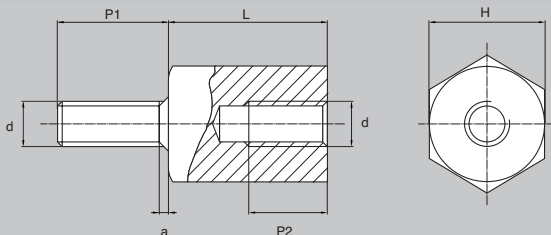


M6 on request.
Contact us at : bulte@bulte.com

Other lengths on request.



SPACERS > Metric hex tapped / threaded spacers



d	H	P1	P2	L	Unit of sale	Part N°
M3	6,0	8,0	5,0	8,0	1 000	MF36858
M3	6,0	8,0	7,0	10,0	1 000	MF368710
M3	6,0	8,0	8,0	12,0	1 000	MF368712
M3	6,0	8,0	10,0	15,0	1 000	MF368715
M3	6,0	8,0	10,0	18,0	1 000	MF368718
M3	6,0	8,0	10,0	20,0	1 000	MF368720
M3	6,0	8,0	10,0	25,0	1 000	MF368725
M3	6,0	8,0	10,0	30,0	1 000	MF368730
M3	6,0	8,0	10,0	35,0	1 000	MF368735
M3	6,0	8,0	10,0	40,0	1 000	MF368740
M3	6,0	8,0	10,0	45,0	1 000	MF368745
M3	6,0	8,0	10,0	50,0	1 000	MF368750

M4	8,0	8,0	6,0	8,0	1 000	MF48878
M4	8,0	8,0	6,0	10,0	1 000	MF488710
M4	8,0	8,0	10,0	12,0	1 000	MF488712
M4	8,0	8,0	10,0	15,0	1 000	MF488715
M4	8,0	8,0	10,0	18,0	1 000	MF488718
M4	8,0	8,0	10,0	20,0	1 000	MF488720
M4	8,0	8,0	10,0	25,0	1 000	MF488725
M4	8,0	8,0	10,0	30,0	1 000	MF488730
M4	8,0	8,0	10,0	35,0	1 000	MF488735
M4	8,0	8,0	10,0	40,0	1 000	MF488740
M4	8,0	8,0	10,0	45,0	1 000	MF488745
M4	8,0	8,0	10,0	50,0	1 000	MF488750

M5 and M6 on request.

MATERIALS - COLOURS

STANDARD :

- Black Nylon glass filled.

ON REQUEST :

- Natural nylon / Black Nylon / Natural POM.

> The spacer allows a constant gap between 2 components.

> It is insulating and absorbs noise and vibrations.

> It can withstand variations in temperature from - 30°C to + 110°C.



125



Natural Nylon



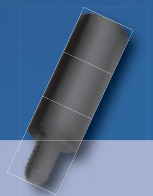
Black nylon



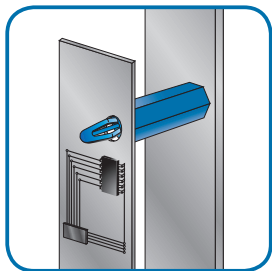
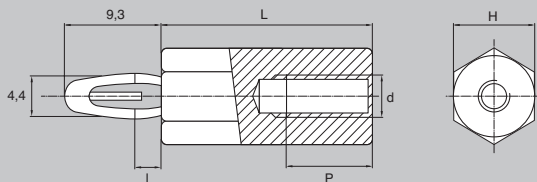
Natural POM



Round version on request.



SPACERS > PCB spacers with clips M3 / M4



> Designed for plates/ PCB's/ etc...
ø 4.0 mm.

> Good dimensional stability.

d	H	I	P	L	Unit of sale	Part N
M3	6,0	1,8	5,0	8,0	1 000	ECI361858
M3	6,0	1,8	7,0	10,0	1 000	ECI3618710
M3	6,0	1,8	8,0	12,0	1 000	ECI3618712
M3	6,0	1,8	10,0	15,0	1 000	ECI3618715
M3	6,0	1,8	10,0	18,0	1 000	ECI3618718
M3	6,0	1,8	10,0	20,0	1 000	ECI3618720
M3	6,0	1,8	10,0	25,0	1 000	ECI3618725
M3	6,0	1,8	10,0	30,0	1 000	ECI3618730
M3	6,0	1,8	10,0	35,0	1 000	ECI3618735
M3	6,0	1,8	10,0	40,0	1 000	ECI3618740
M3	6,0	1,8	10,0	45,0	1 000	ECI3618745
M3	6,0	1,8	10,0	50,0	1 000	ECI3618750

M4	8,0	1,8	6,0	8,0	1 000	ECI481868
M4	8,0	1,8	6,0	10,0	1 000	ECI4818610
M4	8,0	1,8	10,0	12,0	1 000	ECI4818612
M4	8,0	1,8	10,0	15,0	1 000	ECI4818615
M4	8,0	1,8	10,0	18,0	1 000	ECI4818618
M4	8,0	1,8	10,0	20,0	1 000	ECI4818620
M4	8,0	1,8	10,0	25,0	1 000	ECI4818625
M4	8,0	1,8	10,0	30,0	1 000	ECI4818630
M4	8,0	1,8	10,0	35,0	1 000	ECI4818635
M4	8,0	1,8	10,0	40,0	1 000	ECI4818640
M4	8,0	1,8	10,0	45,0	1 000	ECI4818645
M4	8,0	1,8	10,0	50,0	1 000	ECI4818650

MATERIALS - COLOURS

STANDARD :

- Black Nylon.

ON REQUEST :

- Natural nylon / Black POM / Blue Nylon / Green Nylon / Yellow Nylon / Red Nylon.
Minimum quantity on request.
- Colours : see RAL colour chart page 510 / 511.



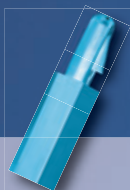
127



Natural Nylon



Black POM



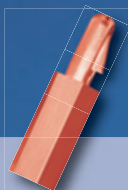
Blue Nylon



Green Nylon



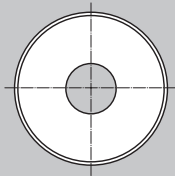
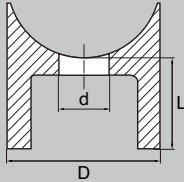
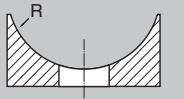
Yellow Nylon



Red Nylon

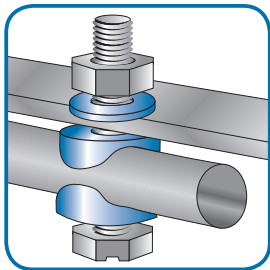


SPACERS > Saddle washers / spacers M6



M	d	D	L	R	Tube Ø	Unit of sale	Part N°
M6	6,5	20,0	3,0	10,5	20-22	5 000	ET65201053
M6	6,5	20,0	4,0	10,5	20-22	5 000	ET65201054
M6	6,5	20,0	5,0	10,5	20-22	5 000	ET65201055
M6	6,5	20,0	6,0	10,5	20-22	5 000	ET65201056
M6	6,5	20,0	7,0	10,5	20-22	5 000	ET65201057
M6	6,5	20,0	8,0	10,5	20-22	5 000	ET65201058
M6	6,5	20,0	9,0	10,5	20-22	5 000	ET65201059
M6	6,5	20,0	10,0	10,5	20-22	5 000	ET652010510
M6	6,5	20,0	11,0	10,5	20-22	5 000	ET652010511
M6	6,5	20,0	12,0	10,5	20-22	5 000	ET652010512
M6	6,5	20,0	13,0	10,5	20-22	5 000	ET652010513
M6	6,5	20,0	14,0	10,5	20-22	5 000	ET652010514
M6	6,5	20,0	15,0	10,5	20-22	5 000	ET652010515
M6	6,5	20,0	16,0	10,5	20-22	5 000	ET652010516
M6	6,5	20,0	17,0	10,5	20-22	5 000	ET652010517
M6	6,5	20,0	18,0	10,5	20-22	5 000	ET652010518
M6	6,5	20,0	19,0	10,5	20-22	5 000	ET652010519
M6	6,5	20,0	20,0	10,5	20-22	5 000	ET652010520
M6	6,5	20,0	21,0	10,5	20-22	5 000	ET652010521
M6	6,5	20,0	22,0	10,5	20-22	5 000	ET652010522
M6	6,5	20,0	23,0	10,5	20-22	5 000	ET652010523
M6	6,5	20,0	24,0	10,5	20-22	5 000	ET652010524
M6	6,5	20,0	25,0	10,5	20-22	5 000	ET652010525
M6	6,5	20,0	26,0	10,5	20-22	5 000	ET652010526
M6	6,5	20,0	27,0	10,5	20-22	5 000	ET652010527
M6	6,5	20,0	28,0	10,5	20-22	5 000	ET652010528
M6	6,5	20,0	29,0	10,5	20-22	5 000	ET652010529
M6	6,5	20,0	30,0	10,5	20-22	5 000	ET652010530

→ Continued next page.



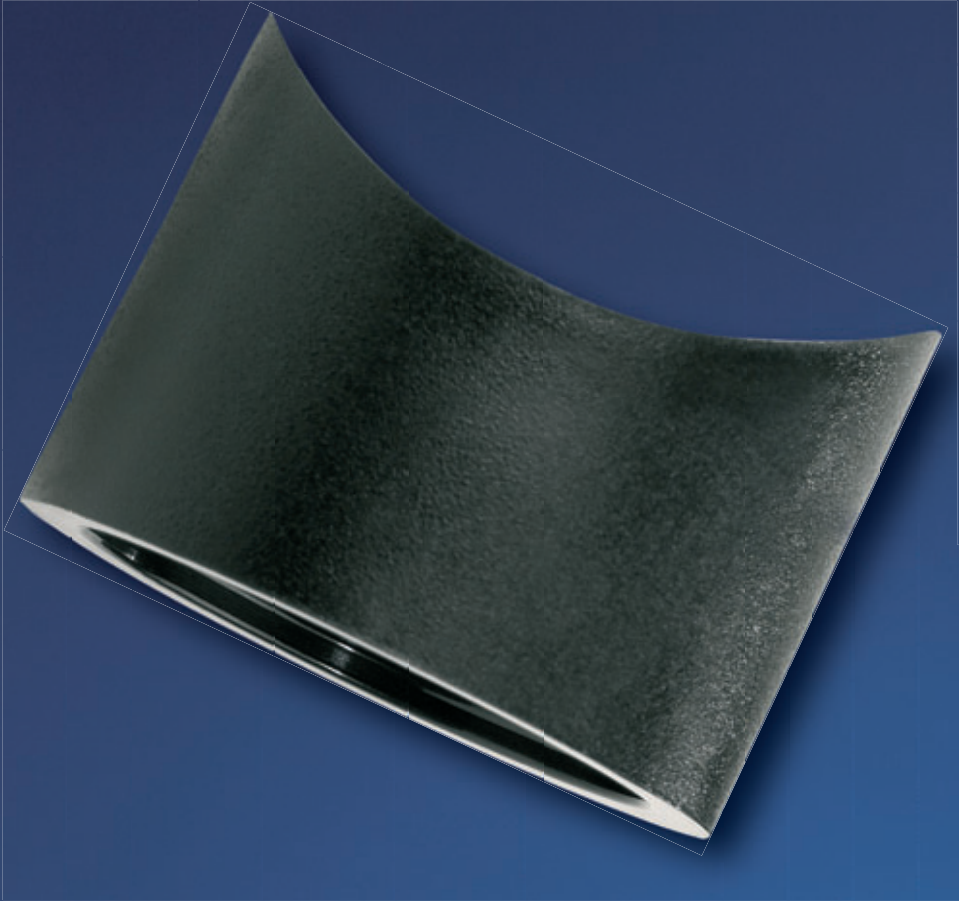
MATERIALS - COLOURS

STANDARD :

- Black Nylon.

ON REQUEST :

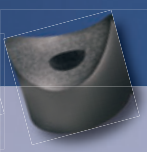
- Natural nylon / Black PE / PP / POM / Black POM.
Minimum quantity on request.
- Colours : see RAL colour chart page 510 / 511.



129



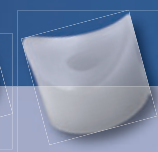
Natural Nylon



Black PE



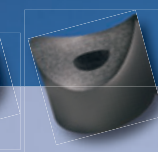
PE



PP



POM



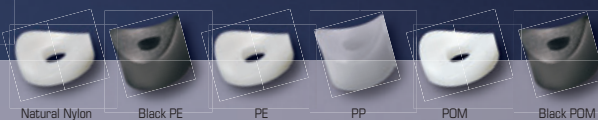
Black POM



SPACERS > Saddle washers / spacers M6 / M8

M	d	D	L	R	Tube Ø	Unit of sale	Part N°	M	d	D	L	R
M6	6,5	20,0	3,0	12,5	24-26	5 000	ET65201253	M8	8,5	24,0	3,0	12,5
M6	6,5	20,0	4,0	12,5	24-26	5 000	ET65201254	M8	8,5	24,0	4,0	12,5
M6	6,5	20,0	5,0	12,5	24-26	5 000	ET65201255	M8	8,5	24,0	5,0	12,5
M6	6,5	20,0	6,0	12,5	24-26	5 000	ET65201256	M8	8,5	24,0	6,0	12,5
M6	6,5	20,0	7,0	12,5	24-26	5 000	ET65201257	M8	8,5	24,0	7,0	12,5
M6	6,5	20,0	8,0	12,5	24-26	5 000	ET65201258	M8	8,5	24,0	8,0	12,5
M6	6,5	20,0	9,0	12,5	24-26	5 000	ET65201259	M8	8,5	24,0	9,0	12,5
M6	6,5	20,0	10,0	12,5	24-26	5 000	ET652012510	M8	8,5	24,0	10,0	12,5
M6	6,5	20,0	11,0	12,5	24-26	5 000	ET652012511	M8	8,5	24,0	11,0	12,5
M6	6,5	20,0	12,0	12,5	24-26	5 000	ET652012512	M8	8,5	24,0	12,0	12,5
M6	6,5	20,0	13,0	12,5	24-26	5 000	ET652012513	M8	8,5	24,0	13,0	12,5
M6	6,5	20,0	14,0	12,5	24-26	5 000	ET652012514	M8	8,5	24,0	14,0	12,5
M6	6,5	20,0	15,0	12,5	24-26	5 000	ET652012515	M8	8,5	24,0	15,0	12,5
M6	6,5	20,0	16,0	12,5	24-26	5 000	ET652012516	M8	8,5	24,0	16,0	12,5
M6	6,5	20,0	17,0	12,5	24-26	5 000	ET652012517	M8	8,5	24,0	17,0	12,5
M6	6,5	20,0	18,0	12,5	24-26	5 000	ET652012518	M8	8,5	24,0	18,0	12,5
M6	6,5	20,0	19,0	12,5	24-26	5 000	ET652012519	M8	8,5	24,0	19,0	12,5
M6	6,5	20,0	20,0	12,5	24-26	5 000	ET652012520	M8	8,5	24,0	20,0	12,5
M6	6,5	20,0	21,0	12,5	24-26	5 000	ET652012521	M8	8,5	24,0	21,0	12,5
M6	6,5	20,0	22,0	12,5	24-26	5 000	ET652012522	M8	8,5	24,0	22,0	12,5
M6	6,5	20,0	23,0	12,5	24-26	5 000	ET652012523	M8	8,5	24,0	23,0	12,5
M6	6,5	20,0	24,0	12,5	24-26	5 000	ET652012524	M8	8,5	24,0	24,0	12,5
M6	6,5	20,0	25,0	12,5	24-26	5 000	ET652012525	M8	8,5	24,0	25,0	12,5
M6	6,5	20,0	26,0	12,5	24-26	5 000	ET652012526	M8	8,5	24,0	26,0	12,5
M6	6,5	20,0	27,0	12,5	24-26	5 000	ET652012527	M8	8,5	24,0	27,0	12,5
M6	6,5	20,0	28,0	12,5	24-26	5 000	ET652012528	M8	8,5	24,0	28,0	12,5
M6	6,5	20,0	29,0	12,5	24-26	5 000	ET652012529	M8	8,5	24,0	29,0	12,5
M6	6,5	20,0	30,0	12,5	24-26	5 000	ET652012530	M8	8,5	24,0	30,0	12,5





Natural Nylon

Black PE

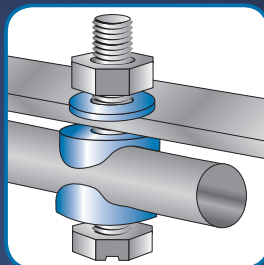
PE

PP

POM

Black POM

Tube Ø	Unit of sale	Part N°
24-26	5 000	ET85241253
24-26	5 000	ET85241254
24-26	5 000	ET85241255
24-26	5 000	ET85241256
24-26	5 000	ET85241257
24-26	5 000	ET85241258
24-26	5 000	ET85241259
24-26	5 000	ET852412510
24-26	5 000	ET852412511
24-26	5 000	ET852412512
24-26	5 000	ET852412513
24-26	5 000	ET852412514
24-26	5 000	ET852412515
24-26	5 000	ET852412516
24-26	5 000	ET852412517
24-26	5 000	ET852412518
24-26	5 000	ET852412519
24-26	5 000	ET852412520
24-26	5 000	ET852412521
24-26	5 000	ET852412522
24-26	5 000	ET852412523
24-26	5 000	ET852412524
24-26	5 000	ET852412525
24-26	5 000	ET852412526
24-26	5 000	ET852412527
24-26	5 000	ET852412528
24-26	5 000	ET852412529
24-26	5 000	ET852412530



Other dimensions on request.
Contact us at : bulte@bulte.com

Other materials on request.

