



# PLASTIMONT

386







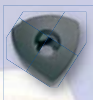
> Three - stars plastimont bodies CO 184 ..... Page **390 - 391**



> Four - stars plastimont bodies CO 185 ..... Page **390 - 391**



> Triangular plastimont bodies CO 195 ..... Page **392 - 393**



> Triangular plastimont bodies CO 200 ..... Page **392 - 393**



> Knurled plastimont bodies CO 210 ..... Page **394 - 395**



> Wing plastimont bodies CO 250 ..... Page **396 - 397**



> Wing plastimont bodies CO 255 ..... Page **396 - 397**



> Wing plastimont bodies CO 258 ..... Page **398 - 399**



> T-plastimont bodies CO 260 ..... Page **398 - 399**



> Knurled plastimont bodies CO 270 ..... Page **394 - 395**



> Star plastimont bodies CO 280 ..... Page **400 - 401**



> Star plastimont bodies CO 320 ..... Page **402 - 403**



> Star plastimont bodies CO 390 ..... Page **400 - 401**



> Star plastimont bodies CO 420 ..... Page **400 - 401**



> Flat star plastimont bodies CO 540 ..... Page **404 - 405**



> Star plastimont bodies CO 550 ..... Page **406 - 407**



> Star plastimont bodies CO 620 ..... Page **406 - 407**



> Knurled plastimont bodies CO 640 ..... Page **404 - 405**



> Star plastimont bodies CO 400 L ..... Page **408 - 409**



> Star plastimont bodies CO 500 L ..... Page **408 - 409**

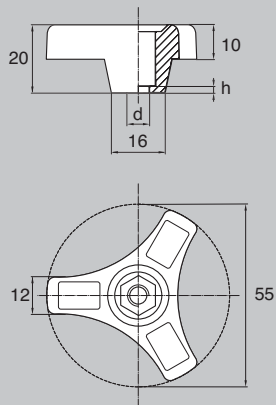


> Star plastimont bodies CO 630 L ..... Page **408 - 409**



> Star plastimont bodies CO 800 L ..... Page **408 - 409**





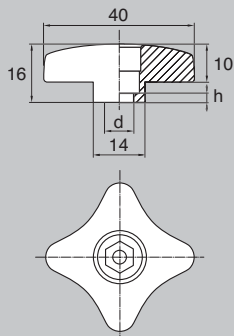
> Knob in kit form.

> Make your knob yourself with Plastimont bodies !

> Insert hex screw or nut made of steel, stainless steel, brass, nylon or other material.

d	A/F	h	Cover	Unit of sale	Part N°
For M6	10	3,0	On request	100	<b>CO1846B</b>
For M8	13	2,5	On request	100	<b>CO1848B</b>

Housing designed for hex head screws or nuts :  
ISO 4032, DIN 571, DIN 931, DIN 933, DIN 934,  
DIN 1587, NFE 24-017, NFE 24-032, NFE 27-311,  
ISO 4017...



d	A/F	h	Cover	Unit of sale	Part N°
For M5	8	2,5	On request	100	<b>CO1855B</b>
For M6	10	3,0	On request	100	<b>CO1856B</b>

Housing designed for hex head screws or nuts :  
ISO 4032, DIN 571, DIN 931, DIN 933, DIN 934,  
DIN 1587, NFE 24-017, NFE 24-032, NFE 27-311,  
ISO 4017...

## MATERIALS - COLOURS

### STANDARD :

- Black Nylon.

### INFORMATION :

- Usable screw length once assembly is made = screw length minus "h".  
Example of assembly with a screw M6 x 20 mm : usable screw length = 20 mm - 3 mm = 17 mm.

### ON REQUEST :

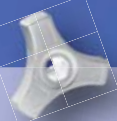
- White Nylon / Red Nylon / Yellow Nylon / Green Nylon / Blue Nylon / Grey Nylon / or other colours...
- Colours : see RAL colour chart page 510 / 511.  
Minimum quantity on request.

Three - stars plastimont body >>  
**CO 184**



<< Four - stars plastimont body  
**CO 185**

391



White Nylon



Red Nylon



Yellow Nylon



Green Nylon

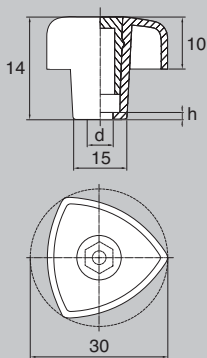


Blue Nylon



Grey Nylon





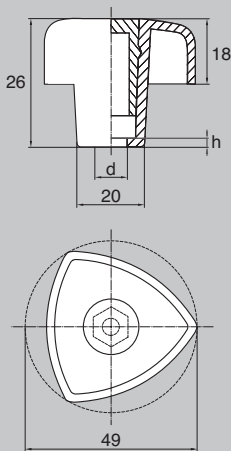
> Knob in kit form.

> Make your knob yourself with Plastimont bodies !

> Insert hex screw or nut made of steel, stainless steel, brass, nylon or other material.

d	A/F	h	Cover	Unit of sale	Part N°
For M4	7	3,0	yes	100	<b>CO1954B</b>
For M5	8	2,5	yes	100	<b>CO1955B</b>
For M6	10	3,0	yes	100	<b>CO1956B</b>

Housing designed for hex head screws or nuts : ISO 4032, DIN 571, DIN 931, DIN 933, DIN 934, DIN 1587, NFE 24-017, NFE 24-032, NFE 27-311, ISO 4017...



d	A/F	h	Cover	Unit of sale	Part N°
For M6	10	3,0	yes	100	<b>CO2006B</b>
For M8	13	3,5	yes	100	<b>CO2008B</b>

Housing designed for hex head screws or nuts : ISO 4032, DIN 571, DIN 931, DIN 933, DIN 934, DIN 1587, NFE 24-017, NFE 24-032, NFE 27-311, ISO 4017...

## MATERIALS - COLOURS

### STANDARD :

- Black Nylon.

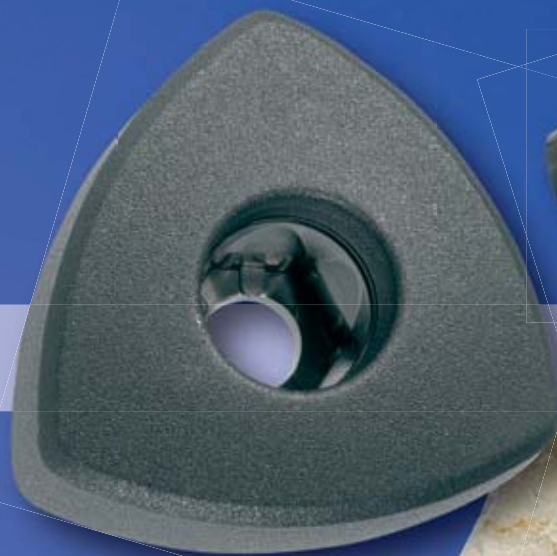
### INFORMATION :

- Usable screw length once assembly is made = screw length minus "h".  
Example of assembly with a screw M6 x 20 mm : usable screw length = 20 mm - 3 mm = 17 mm.

### ON REQUEST :

- White Nylon / Red Nylon / Yellow Nylon / Green Nylon / Blue Nylon / Grey Nylon / or other colours...
- Colours : see RAL colour chart page 510 / 511.
- Coloured cover.  
Minimum quantity on request.

Triangular plastimont body >>  
**CO 195**

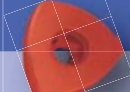


<< Triangular plastimont body  
**CO 200**

393



White Nylon



Red Nylon



Yellow Nylon



Green Nylon



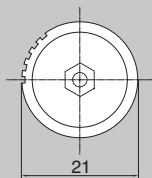
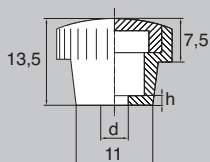
Blue Nylon



Grey Nylon







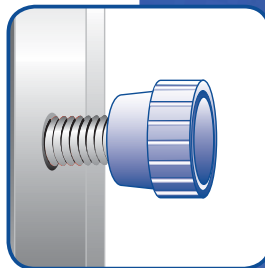
> Knob in kit form.

> Make your knob yourself with Plastimont bodies !

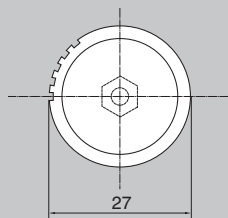
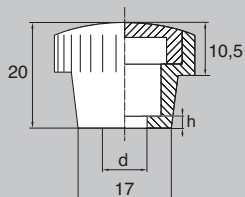
> Insert hex screw or nut made of steel, stainless steel, brass, nylon or other material.

d	A/F	h	Cover	Unit of sale	Part N°
For M4	7	2,0	yes	100	<b>CO2104B</b>
For M5	8	2,0	yes	100	<b>CO2105B</b>

Housing designed for hex head screws or nuts :  
ISO 4032, DIN 571, DIN 931, DIN 933, DIN 934,  
DIN 1587, NFE 24-017, NFE 24-032, NFE 27-311,  
ISO 4017...



> When using a male insert we recommend a lock nut if fully tightening down to the end of the screw.



d	A/F	h	Cover	Unit of sale	Part N°
For M5	8	2,0	yes	100	<b>CO2705B</b>
For M6	10	2,5	yes	100	<b>CO2706B</b>
For M8	13	2,5	yes	100	<b>CO2708B</b>

Housing designed for hex head screws or nuts :  
ISO 4032, DIN 571, DIN 931, DIN 933, DIN 934,  
DIN 1587, NFE 24-017, NFE 24-032, NFE 27-311,  
ISO 4017...

## MATERIALS - COLOURS

### STANDARD :

- Black Nylon.

### INFORMATION :

- Usable screw length once assembly is made = screw length minus "h".  
Example of assembly with a screw M5 x 20 mm : usable screw length = 20 mm - 2 mm = 18 mm.

### ON REQUEST :

- White Nylon / Red Nylon / Yellow Nylon / Green Nylon / Blue Nylon / Grey Nylon / or other colours...
- Colours : see RAL colour chart page 510 / 511.
- Coloured cover.  
Minimum quantity on request.

Knurled plastimont body  
**CO 210** >>



<< Knurled plastimont body  
**CO 270**



395



White Nylon



Red Nylon



Yellow Nylon



Green Nylon

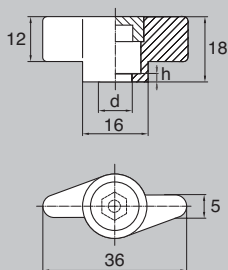


Blue Nylon



Grey Nylon





d	A/F	h	Cover	Unit of sale	Part N°
For M4	7	3,0	yes	100	<b>CO2504B</b>
For M5	8	3,0	yes	100	<b>CO2505B</b>
For M6	10	3,0	yes	100	<b>CO2506B</b>

Housing designed for hex head screws or nuts :  
ISO 4032, DIN 571, DIN 931, DIN 933, DIN 934,  
DIN 1587, NFE 24-017, NFE 24-032, NFE 27-311,  
ISO 4017...

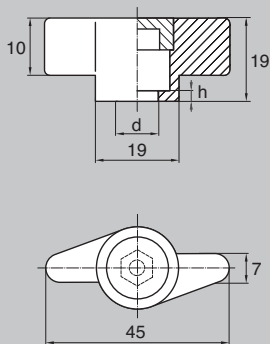
> Knob in kit form.

> Make your knob yourself with Plastimont bodies !

> Insert hex screw or nut made of steel, stainless steel, brass, nylon or other material.



> When using a male insert we recommend a lock nut if fully tightening down to the end of the screw.



d	A/F	h	Cover	Unit of sale	Part N°
For M6	10	4,0	yes	100	<b>CO2556B</b>
For M8	13	4,0	yes	100	<b>CO2558B</b>

Housing designed for hex head screws or nuts :  
ISO 4032, DIN 571, DIN 931, DIN 933, DIN 934,  
DIN 1587, NFE 24-017, NFE 24-032, NFE 27-311,  
ISO 4017...

## MATERIALS - COLOURS

### STANDARD :

- Black Nylon.

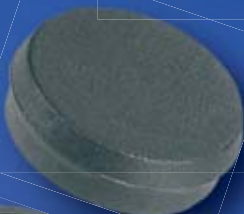
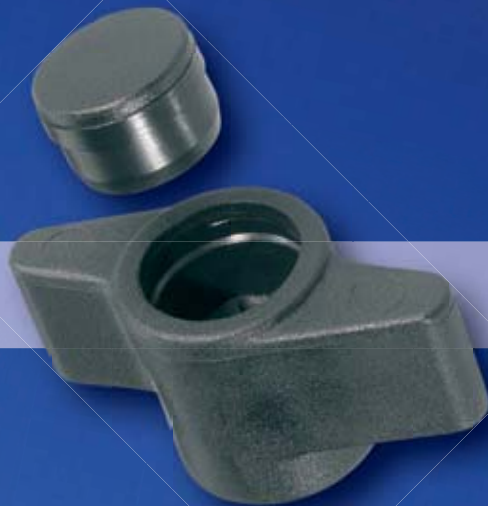
### INFORMATION :

- Usable screw length once assembly is made = screw length minus "h".  
Example of assembly CO 250 with a screw M6 x 20 mm : usable screw length = 20 mm - 3 mm = 17 mm.

### ON REQUEST :

- White Nylon / Red Nylon / Yellow Nylon / Green Nylon / Blue Nylon / Grey Nylon / or other colours...
- Colours : see RAL colour chart page 510 / 511.
- Coloured cover.  
Minimum quantity on request.

Wing plastimont body >>  
**CO 250**



<< Wing plastimont body  
**CO 255**



White Nylon



Red Nylon



Yellow Nylon



Green Nylon

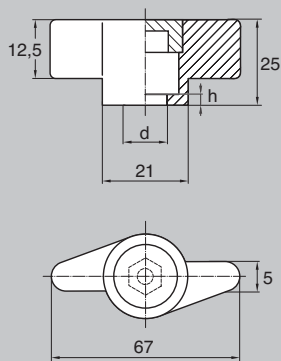


Blue Nylon



Grey Nylon





> Knob in kit form.

> Make your knob yourself with Plastimont bodies !

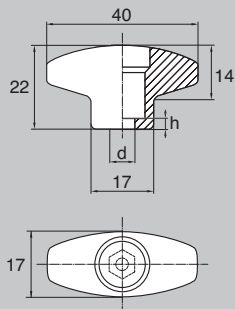
> Insert hex screw or nut made of steel, stainless steel, brass, nylon or other material.

d	A/F	h	Cover	Unit of sale	Part N°
For M5	8	5,0	yes	100	<b>CO2585B</b>
For M6	10	5,0	yes	100	<b>CO2586B</b>
For M8	13	5,0	yes	100	<b>CO2588B</b>
For M10	16	5,0	yes	100	<b>CO25810B</b>

Housing designed for hex head screws or nuts : ISO 4032, DIN 571, DIN 931, DIN 933, DIN 934, DIN 1587, NFE 24-017, NFE 24-032, NFE 27-311, ISO 4017...



> When using a male insert we recommend a lock nut if fully tightening down to the end of the screw.



d	A/F	h	Cover	Unit of sale	Part N°
For M4	7	3,0	yes	100	<b>CO2604B</b>
For M5	8	3,0	yes	100	<b>CO2605B</b>
For M6	10	3,5	yes	100	<b>CO2606B</b>

Housing designed for hex head screws or nuts : ISO 4032, DIN 571, DIN 931, DIN 933, DIN 934, DIN 1587, NFE 24-017, NFE 24-032, NFE 27-311, ISO 4017...

## MATERIALS - COLOURS

### STANDARD :

- Black Nylon.

### INFORMATION :

- Usable screw length once assembly is made = screw length minus "h".  
Example of assembly CO 258 with a screw M6 x 20 mm : usable screw length = 20 mm - 5 mm = 15 mm.

### ON REQUEST :

- White Nylon / Red Nylon / Yellow Nylon / Green Nylon / Blue Nylon / Grey Nylon / or other colours...
- Colours : see RAL colour chart page 510 / 511.
- Coloured cover.  
Minimum quantity on request.

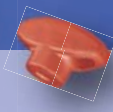
Wing plastimont body  
**CO 258** >>



<< T-plastimont body  
**CO 260**



White Nylon



Red Nylon



Yellow Nylon



Green Nylon

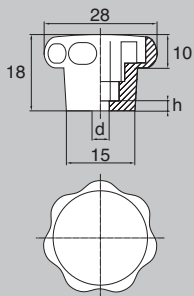


Blue Nylon



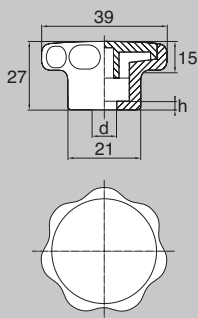
Grey Nylon





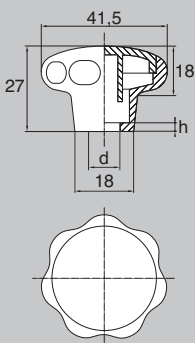
d	A/F	h	Cover	Unit of sale	Part N°
For M4	7	2,5	yes	100	<b>CO2804B</b>
For M5	8	2,5	yes	100	<b>CO2805B</b>
For M6	10	2,5	yes	100	<b>CO2806B</b>

Housing designed for hex head screws or nuts :  
ISO 4032, DIN 571, DIN 931, DIN 933, DIN 934,  
DIN 1587, NFE 24-017, NFE 24-032, NFE 27-311,  
ISO 4017...



d	A/F	h	Cover	Unit of sale	Part N°
For M4	7	2,5	yes	100	<b>CO3904B</b>
For M5	8	3,0	yes	100	<b>CO3905B</b>
For M6	10	3,0	yes	100	<b>CO3906B</b>

Housing designed for hex head screws or nuts :  
ISO 4032, DIN 571, DIN 931, DIN 933, DIN 934,  
DIN 1587, NFE 24-017, NFE 24-032, NFE 27-311,  
ISO 4017...



d	A/F	h	Cover	Unit of sale	Part N°
For M5	8	2,0	yes	100	<b>CO4205B</b>
For M6	10	2,5	yes	100	<b>CO4206B</b>
For M8	13	2,0	yes	100	<b>CO4208B</b>
For M10	13	2,5	yes	100	<b>CO4208B</b>

Dimensions for M10 : 41,5 = 42,5 mm / 27 = 28 mm / Ø 18 = Ø 21 mm.

Housing designed for hex head screws or nuts :  
ISO 4032, DIN 571, DIN 931, DIN 933, DIN 934,  
DIN 1587, NFE 24-017, NFE 24-032, NFE 27-311,  
ISO 4017...

## MATERIALS - COLOURS

### STANDARD :

- Black Nylon.

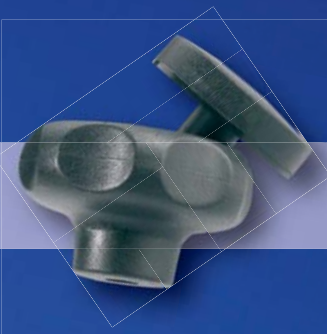
### INFORMATION :

- Usable screw length once assembly is made = screw length minus "h".  
Example of assembly CO 390 with a screw M6 x 20 mm : usable screw length = 20 mm - 3 mm = 17 mm.

### ON REQUEST :

- White Nylon / Red Nylon / Yellow Nylon / Green Nylon / Blue Nylon / Grey Nylon / or other colours...
- Colours : see RAL colour chart page 510 / 511.
- Coloured cover.  
Minimum quantity on request.

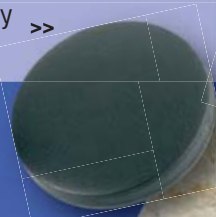
Star plastimont body >>  
**CO 280**



<< Star plastimont body  
**CO 390**



Star plastimont body >>  
**CO 420**



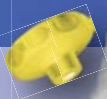
401



White Nylon



Red Nylon



Yellow Nylon



Green Nylon



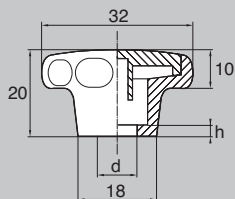
Blue Nylon



Grey Nylon







d	A/F	h	Cover	Unit of sale	Part N°
For M4	7	2,5	yes	100	<b>CO3204B</b>
For M5	8	2,0	yes	100	<b>CO3205B</b>
For M6	10	3,0	yes	100	<b>CO3206B</b>
For M8	13	2,0	yes	100	<b>CO3208B</b>

Housing designed for hex head screws or nuts :  
ISO 4032, DIN 571, DIN 931, DIN 933, DIN 934,  
DIN 1587, NFE 24-017, NFE 24-032, NFE 27-311,  
ISO 4017...

402

> Knob in kit form.

> Make your knob yourself with Plastimont bodies !

> Insert hex screw or nut made of steel, stainless steel, brass, nylon or other material.



> When using a male insert we recommend a lock nut if fully tightening down to the end of the screw.

> Open cover on request.

## MATERIALS - COLOURS

### STANDARD :

- Black Nylon.

### INFORMATION :

- Usable screw length once assembly is made = screw length minus "h".  
Example of assembly with a screw M6 x 20 mm : usable screw length = 20 mm - 3 mm = 17 mm.

### ON REQUEST :

- White Nylon / Red Nylon / Yellow Nylon / Green Nylon / Blue Nylon / Grey Nylon / or other colours...
- Colours : see RAL colour chart page 510 / 511.
- Coloured cover.  
Minimum quantity on request.



Star plastimont body >>  
**CO 320**

403



White Nylon



Red Nylon



Yellow Nylon



Green Nylon

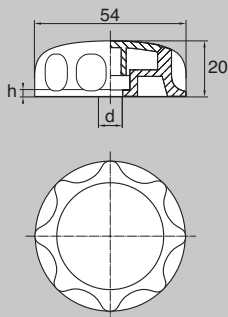


Blue Nylon



Grey Nylon





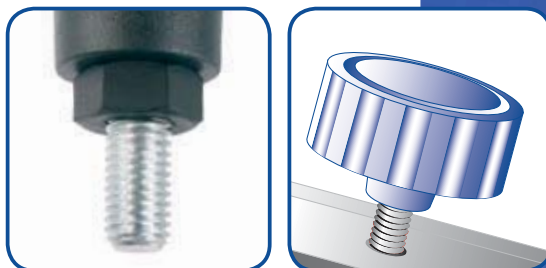
> Knob in kit form.

> Make your knob yourself with Plastimont bodies !

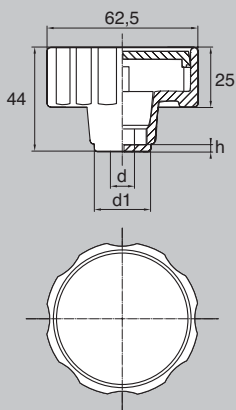
> Insert hex screw or nut made of steel, stainless steel, brass, nylon or other material.

d	A/F	h	Cover	Unit of sale	Part N°
For M8	13	3,0	yes	100	<b>CO5408B</b>

Housing designed for hex head screws or nuts :  
ISO 4032, DIN 571, DIN 931, DIN 933, DIN 934,  
DIN 1587, NFE 24-017, NFE 24-032, NFE 27-311,  
ISO 4017...



> When using a male insert we recommend a lock nut if fully tightening down to the end of the screw.



d	A/F	h	d1	Cover	Unit of sale	Part N°
For M8	13	4,0	17,0	yes	100	<b>CO6408B*</b>
For M10	17	4,0	24,0	yes	100	<b>CO64010B*</b>
For M12	19	4,0	24,0	yes	100	<b>CO64012B*</b>

Housing designed for hex head screws or nuts :  
ISO 4032, DIN 571, DIN 931, DIN 933, DIN 934,  
DIN 1587, NFE 24-017, NFE 24-032, NFE 27-311,  
ISO 4017...

\* A self-locking nut (DIN 985) can be used.

## MATERIALS - COLOURS

### STANDARD :

- Black Nylon.

### INFORMATION :

- Usable screw length once assembly is made = screw length minus "h".  
Example of assembly CO 540 with a screw M8 x 20 mm : usable screw length = 20 mm - 3 mm = 17 mm.

### ON REQUEST :

- White Nylon / Red Nylon / Yellow Nylon / Green Nylon / Blue Nylon / Grey Nylon / or other colours...
- Colours : see RAL colour chart page 510 / 511.
- Coloured cover.  
Minimum quantity on request.

Flat star plastimont  
body **CO 540**

>>

<< Knurled plastimont  
body **CO 640**

405



White Nylon



Red Nylon



Yellow Nylon



Green Nylon

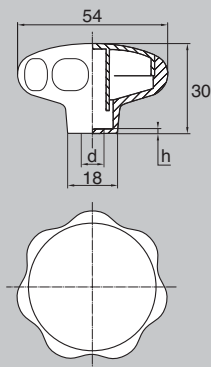


Blue Nylon



Grey Nylon





> Knob in kit form.

> Make your knob yourself with Plastimont bodies !

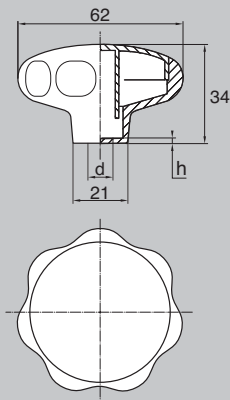
> Insert hex screw or nut made of steel, stainless steel, brass, nylon or other material.

d	A/F	h	Cover	Unit of sale	Part N°
For M8	13	2,5	yes	100	<b>CO5508B</b>

Housing designed for hex head screws or nuts :  
ISO 4032, DIN 571, DIN 931, DIN 933, DIN 934,  
DIN 1587, NFE 24-017, NFE 24-032, NFE 27-311,  
ISO 4017...



> When using a male insert we recommend a lock nut if fully tightening down to the end of the screw.



d	A/F	h	Cover	Unit of sale	Part N°
For M8	13	2,5	yes	100	<b>CO6208B</b>
For M10	17	3,0	yes	100	<b>CO62010B</b>

Housing designed for hex head screws or nuts :  
ISO 4032, DIN 571, DIN 931, DIN 933, DIN 934,  
DIN 1587, NFE 24-017, NFE 24-032, NFE 27-311,  
ISO 4017...

## MATERIALS - COLOURS

### STANDARD :

- Black Nylon.

### INFORMATION :

- Usable screw length once assembly is made = screw length minus "h".  
Example of assembly with a screw M8 x 20 mm : usable screw length = 20 mm - 2,5 mm = 17,5 mm.

### ON REQUEST :

- White Nylon / Red Nylon / Yellow Nylon / Green Nylon / Blue Nylon / Grey Nylon / or other colours...
- Colours : see RAL colour chart page 510 / 511.
- Coloured cover.  
Minimum quantity on request.

Star plastimont body >>  
**CO 550**



<< Star plastimont body  
**CO 620**



407



White Nylon



Red Nylon



Yellow Nylon



Green Nylon



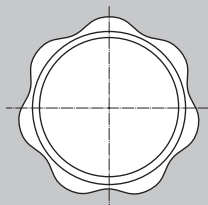
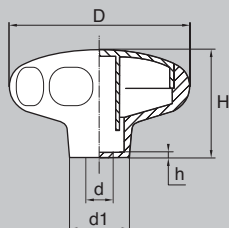
Blue Nylon



Grey Nylon



# PLASTIMONT > CO 400 L > CO 630 L > CO 500 L > CO 800 L



d	A/F	d1	D	H	h	Cover	Part N°
For M6	10	19,0	40,0	27,0	4,0	yes	<b>CO400L6B</b>
For M8	13	19,0	40,0	27,0	3,0	yes	<b>CO400L8B</b>

Housing designed for hex head screws or nuts :  
ISO 4032, DIN 571, DIN 931, DIN 933, DIN 934,  
DIN 1587, NFE 24-017, NFE 24-032, NFE 27-311,  
ISO 4017...

d	A/F	d1	D	H	h	Cover	Part N°
For M6	10	18,0	50,0	35,0	5,0	yes	<b>CO500L6B</b>
For M8	13	18,0	50,0	35,0	4,0	yes	<b>CO500L8B</b>
For M10	17	23,0	50,0	35,0	3,0	yes	<b>CO500L10B</b>

Housing designed for hex head screws or nuts :  
ISO 4032, DIN 571, DIN 931, DIN 933, DIN 934,  
DIN 1587, NFE 24-017, NFE 24-032, NFE 27-311,  
ISO 4017...

d	A/F	d1	D	H	h	Cover	Part N°
For M8	13	23,0	62,5	39,0	4,0	yes	<b>CO630L8B</b>
For M10	17	23,0	62,5	39,0	3,0	yes	<b>CO630L10B</b>

Housing designed for hex head screws or nuts :  
ISO 4032, DIN 571, DIN 931, DIN 933, DIN 934,  
DIN 1587, NFE 24-017, NFE 24-032, NFE 27-311,  
ISO 4017...

d	A/F	d1	D	H	h	Cover	Part N°
For M10	17	25,0	80,0	52,0	4,0	yes	<b>CO800L10B</b>
For M12	19	25,0	80,0	52,0	3,0	yes	<b>CO800L12B</b>

Housing designed for hex head screws or nuts :  
ISO 4032, DIN 571, DIN 931, DIN 933, DIN 934,  
DIN 1587, NFE 24-017, NFE 24-032, NFE 27-311,  
ISO 4017...

408

> Knob in kit form.

> Make your knob yourself with Plastimont bodies !

> Insert hex screw or nut made of steel, stainless steel, brass, nylon or other material.



## MATERIALS - COLOURS

### STANDARD :

- Black Nylon.

### INFORMATION :

- Usable screw length once assembly is made = screw length minus "h".  
Example of assembly CO 400 L with a screw M6 x 20 mm : usable screw length = 20 mm - 4 mm = 16 mm.

### ON REQUEST :

- White Nylon / Red Nylon / Yellow Nylon / Green Nylon / Blue Nylon / Grey Nylon / or other colours...
- Colours : see RAL colour chart page 510 / 511.  
Minimum quantity on request.
- Unit of sale : 100 pieces.

Star plastimont body >>  
**CO 400 L**



<< Star plastimont body  
**CO 500 L**

Star plastimont body >>  
**CO 630 L**



<< Star plastimont body  
**CO 800 L**



White Nylon



Red Nylon



Yellow Nylon



Green Nylon



Blue Nylon



Grey Nylon

