

### Forged hinges - 3 knuckles



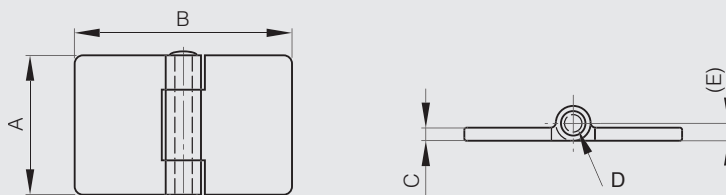
Riveted pin.

Other dimensions or variants are available on request.

Raw steel pin for raw steel hinges.

304 stainless steel pin for 304 stainless steel hinges.

Part number	Material	Finish	A	B	C	D	E	Note	Weight (g)
72-1-3346	steel	raw	32	32	3	4	4	1 MR (railway code)	33
72-1-3348	steel	raw	32	50	3	4	4	3 MR (railway code)	47
72-1-3349	steel	raw	50	50	3	4	4	4 MR (railway code)	75
72-1-3352	steel	raw	50	50	5	6	6	7 MR (railway code)	122
72-1-3351	steel	raw	50	80	3	4	4	6 MR (railway code)	108
72-1-3354	steel	raw	50	80	5	6	6	9 MR (railway code)	182
72-1-3990	304 stainless steel	raw	50	50	3	4	4	4 MR (railway code)	71
<b>NEW</b> 72-1-4186	304 stainless steel	raw	50	80	3	4	4	6 MR (railway code)	112
72-1-4187	304 stainless steel	raw	50	80	5	6	6	9 MR (railway code)	182



### Forged hinges with reversed leaves - 3 knuckles



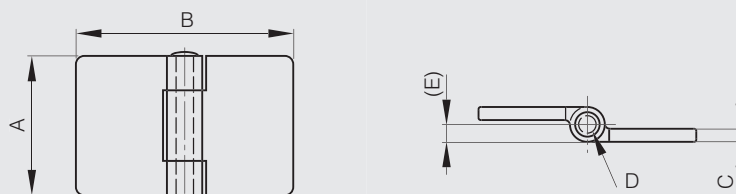
Riveted pin.

Other dimensions or variants are available on request.

Raw steel pin for raw steel hinges.

304 stainless steel pin for 304 stainless steel hinges.

Part number	Material	Finish	A	B	C	D	E	Note	Weight (g)
72-1-3380	steel	raw	32	50	3	4	4	17 MR (railway code)	33
72-1-3381	steel	raw	50	50	3	4	4	20 MR (railway code)	70
72-1-3384	steel	raw	50	50	5	6	6	23 MR (railway code)	122
<b>NEW</b> 72-1-3383	steel	raw	50	80	3	4	4	22 MR (railway code)	104
72-1-3386	steel	raw	50	80	5	6	6	25 MR (railway code)	182
72-1-3992	304 stainless steel	raw	50	50	3	4	4	20 MR (railway code)	71
72-1-3993	304 stainless steel	raw	50	80	3	4	4	22 MR (railway code)	112



### Forged hinges - 5 knuckles



Riveted pin : (except part number: 72-1-4288 with a removable pin).

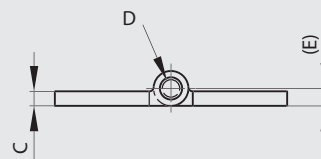
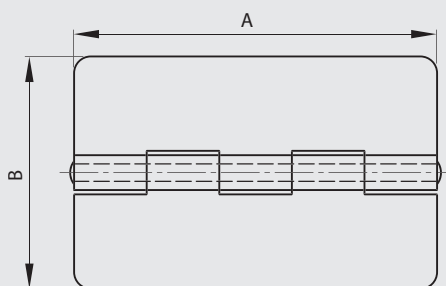
Other dimensions or variants are available on request.

Raw steel pin for raw steel hinges.

304 stainless steel pin for 304 stainless steel hinges.



	Part number	Material	Finish	A	B	C	D	E	Note	Weight (g)
<b>NEW</b>	<b>72-1-4289</b>	steel	raw	60	60	6	6	6		283
	<b>72-1-3410</b>	steel	raw	80	80	5	6	6	1 FR (railway code)	283
	<b>72-1-3414</b>	steel	raw	80	80	8	10	10	14 FR (railway code)	485
	<b>72-1-3412</b>	steel	raw	80	130	5	6	6	3 FR (railway code)	436
	<b>72-1-3416</b>	steel	raw	80	130	8	10	10	16 FR (railway code)	761
	<b>72-1-3413</b>	steel	raw	125	80	5	6	6	11 FR (railway code)	440
	<b>72-1-3417</b>	steel	raw	125	130	8	10	10	24 FR (railway code)	1240
<b>NEW</b>	<b>72-1-4290</b>	304 stainless steel	raw	60	60	6	6	6		283
	<b>72-1-3991</b>	304 stainless steel	raw	80	80	5	6	6	1 FR (railway code)	283
<b>NEW</b>	<b>72-1-4279</b>	304 stainless steel	raw	80	130	5	6	6	3 FR (railway code)	436
<b>NEW</b>	<b>72-1-4288</b>	304 stainless steel	raw	80	130	5	6	6	Removable pin	436

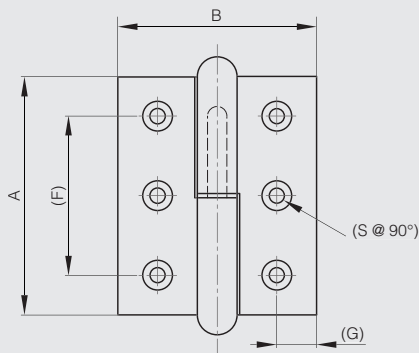


### Forged lift-off hinges

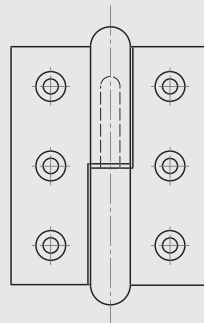
With raw brass washer.



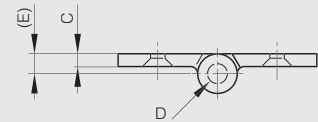
Part number	Material	Finish	A	B	C	D	E	F	G	S	Note	Weight (g)
14-1-3328	steel	raw	48	40	3	4	4	32	8	4	type 1	52
14-1-3329	steel	raw	48	40	3	4	4	32	8	4	type 2	52
14-1-3330	steel	raw	60	50	3.5	5	5	40	10	5.5	type 1	97
14-1-3331	steel	raw	60	50	3.5	5	5	40	10	5.5	type 2	95
14-1-3332	steel	raw	72	60	4	6	6	48	12	6.5	type 1	156
14-1-3333	steel	raw	72	60	4	6	6	48	12	6.5	type 2	156
14-1-3334	steel	raw	84	70	4.5	7	7	56	14	7.5	type 1	245
14-1-3335	steel	raw	84	70	4.5	7	7	56	14	7.5	type 2	245
14-1-3336	steel	raw	96	80	5	8	8	66	16	8.5	type 1	360
14-1-3337	steel	raw	96	80	5	8	8	66	16	8.5	type 2	360



14-1-3328 & 14-1-3330  
14-1-3332 & 14-1-3334 & 14-1-3336



14-1-3329 & 14-1-3331  
14-1-3333 & 14-1-3335 & 14-1-3337



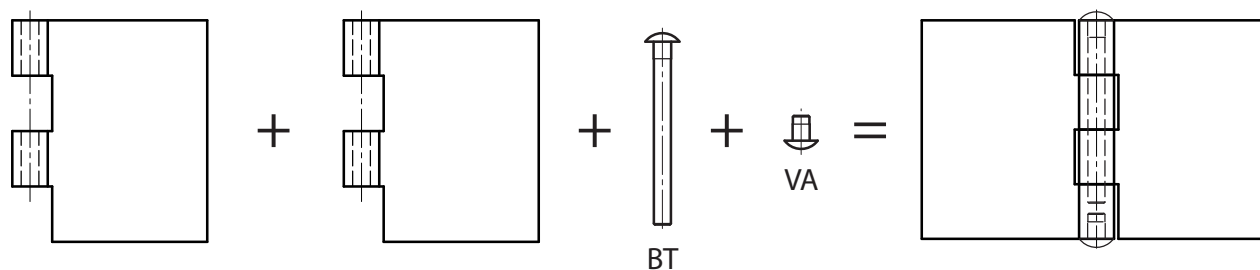
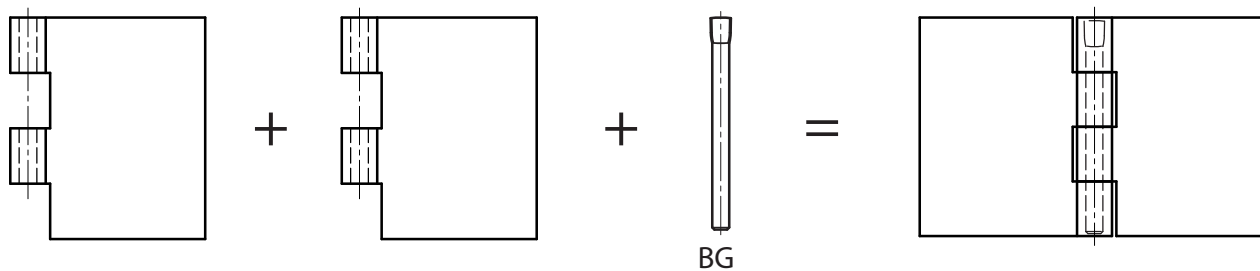


# Heavy duty hinges

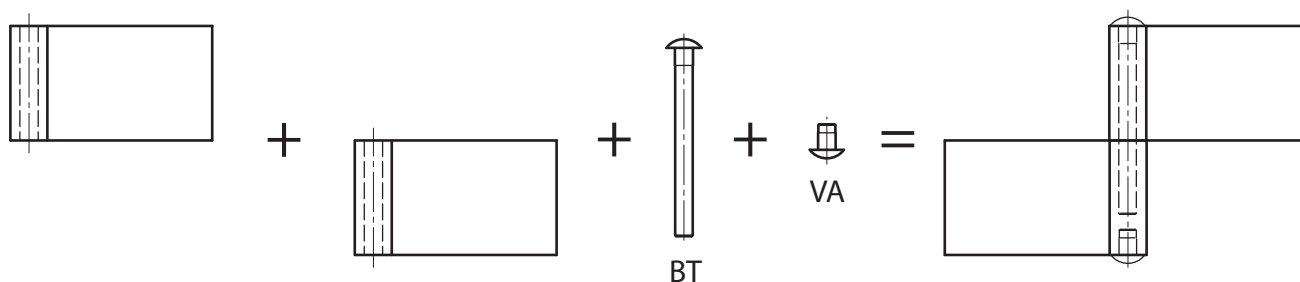
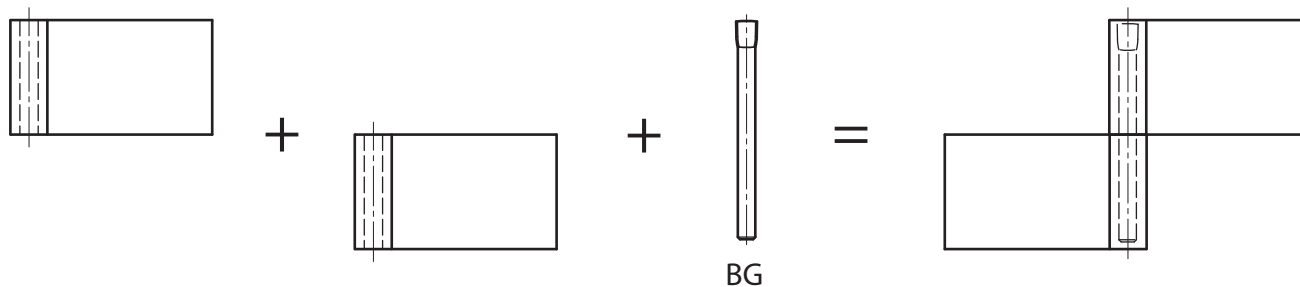
## Modulo range

**Modulo range: composed of parts to be assembled by customer (or on request)**

Pin is made of either an expanded pin (BG) or a headed pin (BT) with a plug (VA).



BG: Expanded pin  
 BT: Headed pin  
 VA: Plug



Parts can be delivered assembled, on request (**part number 91-1-0001**).

### NOTE:

- Only leaves with the same thickness can be fitted together.
- The expanded pin (BG) can be assembled or disassembled with a hammer.
- The headed pin BT and the plug VA are fitted together with a hammer and make the pin non removable.

### Modifications:

This range of hinges has been designed to make modifications easier (cranking, drilling...) for our customers. However any in-house modification is possible with a MOQ of 250 units for stainless steel material and 500 units for steel material. Please ask for more information.

### Half leaves for Modulo hinges - thickness 3 mm

Leaves can be combined together and with either:

- a 6 mm diameter expanded pin (BG) (part numbers 27-1-3820, 27-1-3823),
- a 6 mm pin in POM (part number 27-1-3938),
- a 6 mm diameter headed pin (BT) (part numbers 27-1-3826, 27-1-3829) with a plug (part numbers 27-1-3832, 27-1-3835).



Part number	Material	Finish	A	B	C	D	Weight (g)
50-1-3991	steel	raw	80	30	3	6	74
50-1-3992	steel	raw	80	40	3	6	92.5
50-1-3993	steel	raw	80	50	3	6	111.4
50-1-3994	steel	raw	80	60	3	6	130.2
50-1-3995	steel	raw	80	80	3	6	168
52-1-3771	304 stainless steel	deburred	80	30	3	6	74
52-1-3772	304 stainless steel	deburred	80	40	3	6	92.5
52-1-3773	304 stainless steel	deburred	80	50	3	6	111.4
52-1-3774	304 stainless steel	deburred	80	60	3	6	130.2
52-1-3775	304 stainless steel	deburred	80	80	3	6	168

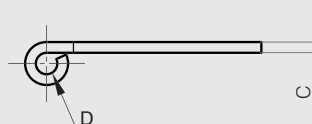
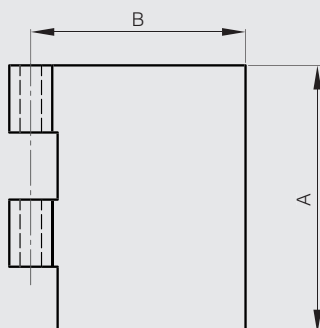
### Half leaves for Modulo hinges - thickness 4 mm

Leaves can be combined together and with either:

- a 8 mm diameter expanded pin (BG) (part numbers 27-1-3821, 27-1-3824),
- a 8 mm diameter headed pin (BT) (part numbers 27-1-3827, 27-1-3830) with a plug (part numbers 27-1-3833, 27-1-3836).



Part number	Material	Finish	A	B	C	D	Weight (g)
50-1-3996	steel	raw	100	30	4	8	131
50-1-3997	steel	raw	100	40	4	8	162.5
50-1-3998	steel	raw	100	50	4	8	194
50-1-3999	steel	raw	100	60	4	8	225.3
50-1-4000	steel	raw	100	80	4	8	288
52-1-3776	304 stainless steel	deburred	100	30	4	8	131
52-1-3777	304 stainless steel	deburred	100	40	4	8	162.5
52-1-3778	304 stainless steel	deburred	100	50	4	8	194
52-1-3779	304 stainless steel	deburred	100	60	4	8	225.3
52-1-3780	304 stainless steel	deburred	100	80	4	8	288



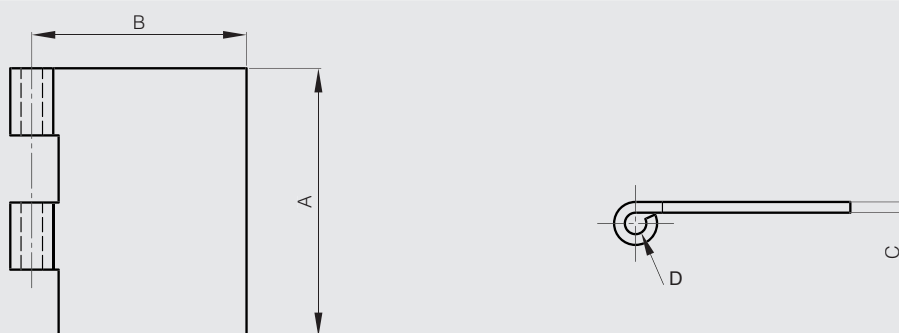
### Half leaves for Modulo hinges - thickness 5 mm

Leaves can be combined together and with either:

- a 10 mm diameter expanded pin (BG) (part numbers 27-1-3822, 27-1-3825),
- a 10 mm diameter headed pin (BT) (part numbers 27-1-3828, 27-1-3831) with a plug (part numbers 27-1-3834, 27-1-3837).



Part number	Material	Finish	A	B	C	D	Weight (g)
50-1-4001	steel	raw	120	30	5	10	211
50-1-4002	steel	raw	120	40	5	10	258
50-1-4003	steel	raw	120	50	5	10	305.2
50-1-4004	steel	raw	120	60	5	10	352.3
50-1-4005	steel	raw	120	80	5	10	446.5
52-1-3781	304 stainless steel	deburred	120	30	5	10	211
52-1-3782	304 stainless steel	deburred	120	40	5	10	258
52-1-3783	304 stainless steel	deburred	120	50	5	10	305.2
52-1-3784	304 stainless steel	deburred	120	60	5	10	352.3
52-1-3785	304 stainless steel	deburred	120	80	5	10	446.5



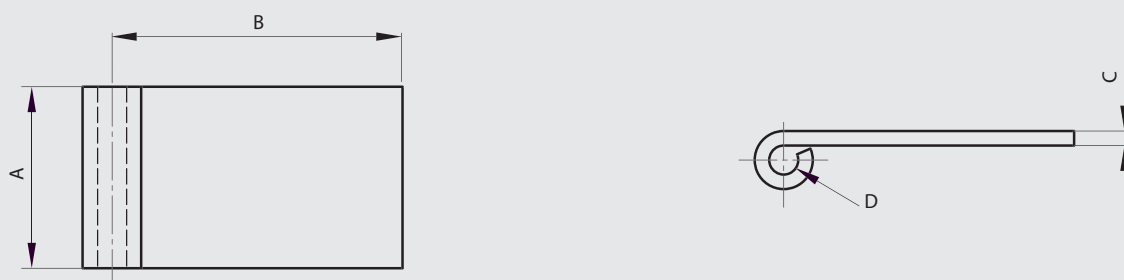
### Half leaves for Modulo pin hinges - thickness 3 mm

Leaves can be combined together and with either:

- a 6 mm diameter expanded pin (BG) (part numbers 27-1-3820, 27-1-3823),
- a 6 mm pin in POM (part number 27-1-3938),
- a 6 mm diameter headed pin (BT) (part numbers 27-1-3826, 27-1-3829) with a plug (part numbers 27-1-3832, 27-1-3835).



Part number	Material	Finish	A	B	C	D	Weight (g)
12-1-3866	steel	raw	40	30	3	6	36.9
12-1-3867	steel	raw	40	50	3	6	55.7
12-1-3868	steel	raw	40	80	3	6	84
12-1-3941	steel	raw	40	20	3	6	24.6
12-1-3943	steel	raw	40	120	3	6	126
12-1-3869	304 stainless steel	deburred	40	30	3	6	36.9
12-1-3870	304 stainless steel	deburred	40	50	3	6	55.7
12-1-3871	304 stainless steel	deburred	40	80	3	6	84
12-1-3942	304 stainless steel	deburred	40	20	3	6	24.6
12-1-3944	304 stainless steel	deburred	40	120	3	6	126



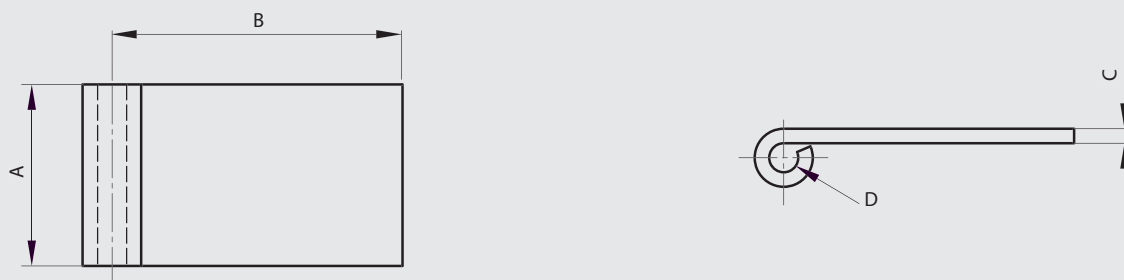
### Half leaves for Modulo pin hinges - thickness 4 mm

Leaves can be combined together and with either:

- a 8 mm diameter expanded pin (BG) (part numbers 27-1-3821, 27-1-3824),
- a 8 mm diameter headed pin (BT) (part numbers 27-1-3827, 27-1-3830) with a plug (part numbers 27-1-3833, 27-1-3836).



Part number	Material	Finish	A	B	C	D	Weight (g)
12-1-3872	steel	raw	50	30	4	8	65.6
12-1-3873	steel	raw	50	50	4	8	97
12-1-3874	steel	raw	50	80	4	8	144
12-1-3875	304 stainless steel	deburred	50	30	4	8	65.6
12-1-3876	304 stainless steel	deburred	50	50	4	8	97
12-1-3877	304 stainless steel	deburred	50	80	4	8	144



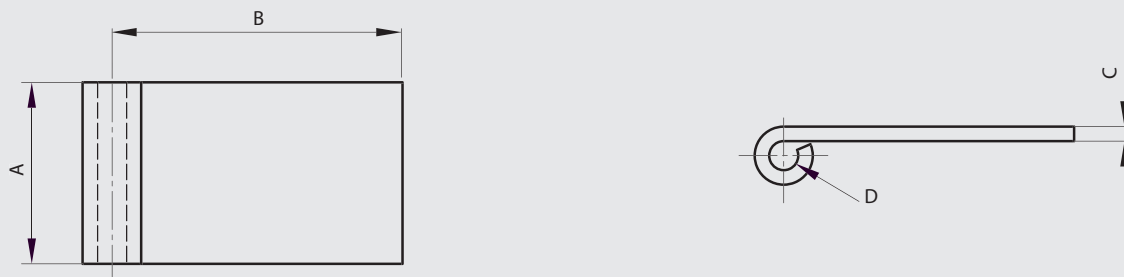
### Half leaves for Modulo pin hinges - thickness 5 mm

Leaves can be combined together and with either:

- a 10 mm diameter expanded pin (BG) (part numbers 27-1-3822, 27-1-3825),
- a 10 mm diameter headed pin (BT) (part numbers 27-1-3828, 27-1-3831) with a plug (part numbers 27-1-3834, 27-1-3837).



Part number	Material	Finish	A	B	C	D	Weight (g)
12-1-3878	steel	raw	60	40	5	10	129
12-1-3879	steel	raw	60	60	5	10	176.2
12-1-3880	steel	raw	60	80	5	10	224
12-1-3881	304 stainless steel	deburred	60	40	5	10	129
12-1-3882	304 stainless steel	deburred	60	60	5	10	176.2
12-1-3883	304 stainless steel	deburred	60	80	5	10	224



### Pin in POM for Modulo system

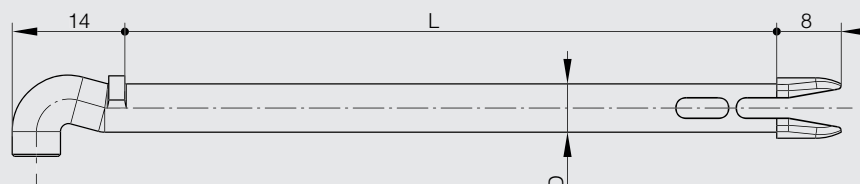
This pin can be combined with Modulo hinges for thickness 3 mm only.

It enables you to make a hinge pin.

Pin can be easily removed without tool.



Part number	Material	Finish	D	L	Weight (g)
27-1-3938	POM	white	6	80	2

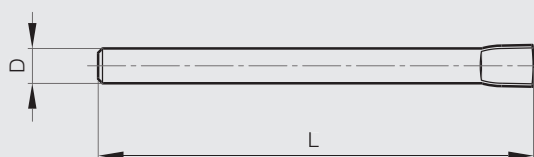


### Expanded pin BG for Modulo system

This pin alone enables you to make a hinge pin for Modulo hinges.



Part number	Material	Finish	D	L	Weight (g)
27-1-3820	steel	zinc plated	6	80	17.7
27-1-3821	steel	zinc plated	8	100	39.4
27-1-3822	steel	zinc plated	10	120	74
27-1-3823	304 stainless steel	raw	6	80	17.7
27-1-3824	304 stainless steel	raw	8	100	39.4
27-1-3825	304 stainless steel	raw	10	120	74



**BG** Broche Gonflée  
Expanded pin  
Gestauchter Stift



### Headed pin BT for Modulo system

This pin combined with a plug (VA) enables you to make a hinge pin for Modulo hinges.



Part number	Material	Finish	D	E	L	Weight (g)
27-1-3826	steel	zinc plated	6	3	66	15.5
27-1-3827	steel	zinc plated	8	4	86	35.5
27-1-3828	steel	zinc plated	10	5	106	68.4
27-1-3829	304 stainless steel	raw	6	3	66	15.5
27-1-3830	304 stainless steel	raw	8	4	86	35.5
27-1-3831	304 stainless steel	raw	10	5	106	68.4

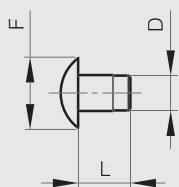


### Plug (VA) for Modulo system

This plug combined with a headed pin (BT) enables you to make a hinge pin for Modulo hinges.

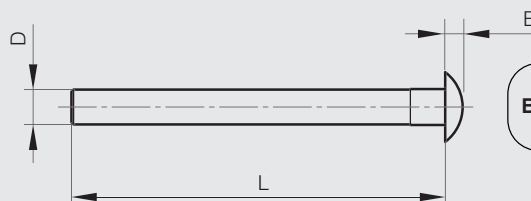


Part number	Material	Finish	D	F	L	Weight (g)
27-1-3832	steel	zinc plated	6	12	12	3.3
27-1-3833	steel	zinc plated	8	16	12	6.3
27-1-3834	steel	zinc plated	10	20	12	10.5
27-1-3835	304 stainless steel	raw	6	12	12	3.3
27-1-3836	304 stainless steel	raw	8	16	12	6.3
27-1-3837	304 stainless steel	raw	10	20	12	10.5



**VA**

VÅse  
Plug  
Stopfen



**BT**

Broche à Tête  
Headed pin  
Stift mit Kopf

# Heavy duty hinges

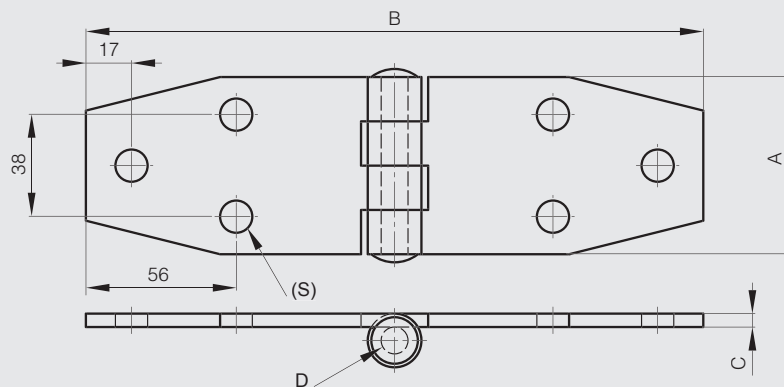
## Heavy duty hinges with rolled knuckles

### Heavy duty hinge - 66 x 230 mm

Stainless steel riveted pin.



Part number	Material	Finish	A	B	C	D	S	Weight (g)
50-1-4060	steel	zinc plated	66	230	5	10	12	622

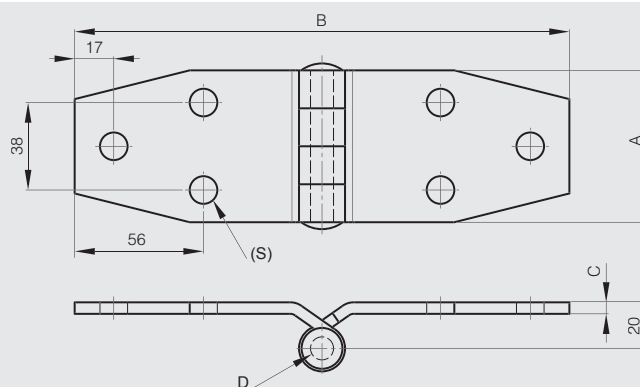


### Heavy duty hinge - 66 x 215 mm

Stainless steel riveted pin.



Part number	Material	Finish	A	B	C	D	S	Weight (g)
50-1-4061	steel	zinc plated	66	215	5	10	12	622



# Heavy duty hinges

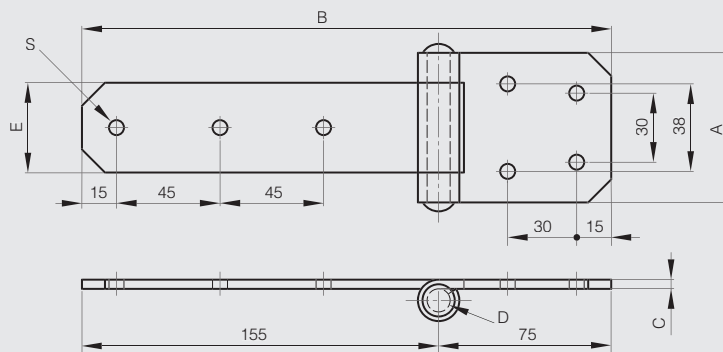
## Heavy duty hinges with rolled knuckles

### Heavy duty hinges - 65 x 230 mm

Riveted pin.



Part number	Material	Finish	A	B	C	D	E	S	Note	Weight (g)
52-1-3553	304 stainless steel	brightened	65	230	4	10	39	6.5	drilled	430
52-1-3593	304 stainless steel	brightened	65	230	4	10	39		undrilled	450

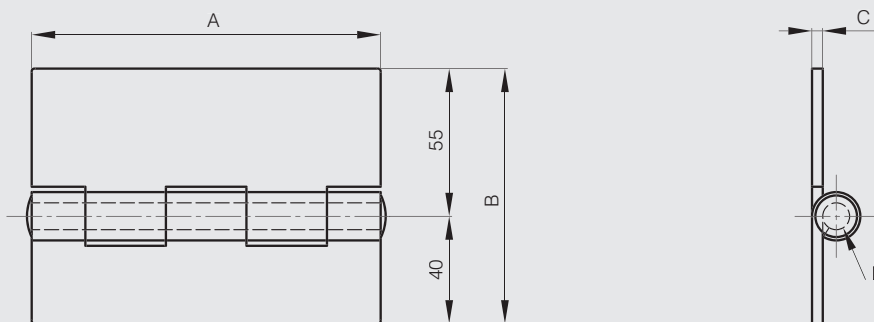


### Heavy duty hinge - 130 x 95 mm

Stainless steel riveted pin.



Part number	Material	Finish	A	B	C	D	Weight (g)
50-1-3944	steel	raw	130	95	4	10	580

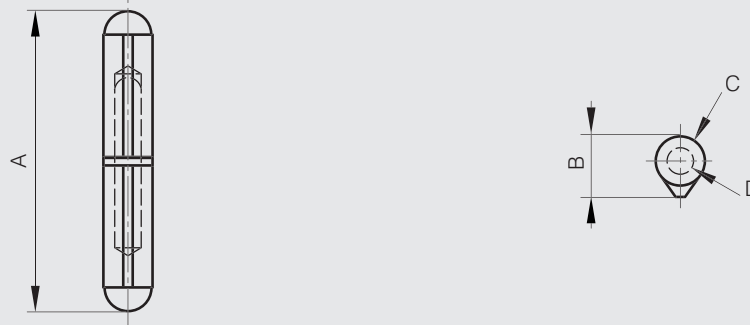


### Round top weld-on steel hinges - brass washer

Fixed pin and washer.



Part number	Material	Finish	A	B	C	D	Pin material	Weight (g)
14-7-3585	steel	raw	40	10	8	5	steel	16
14-7-3573	steel	raw	60	12	10	6	steel	36
14-7-3574	steel	raw	80	16	13	8	steel	84
14-7-3575	steel	raw	100	20	16	10	steel	160
14-7-3586	steel	raw	120	20	16	11	steel	195
14-7-3587	steel	raw	135	22.5	18	12	steel	270
14-7-3576	steel	raw	150	25.5	20	13	steel	390
14-7-3794	steel	raw	180	25.5	20	13	steel	465
14-7-3588	steel	raw	200	29	23	16	steel	660
14-7-3589	steel	raw	40	10	8	5	brass	16
14-7-3590	steel	raw	60	12	10	6	brass	36
14-7-3591	steel	raw	80	16	13	8	brass	84
14-7-3592	steel	raw	100	20	16	10	brass	160
14-7-3593	steel	raw	120	20	16	11	brass	195
14-7-3594	steel	raw	135	22.5	18	12	brass	270
14-7-3595	steel	raw	150	25.5	20	13	brass	390
14-7-3596	steel	raw	200	29	23	16	brass	660

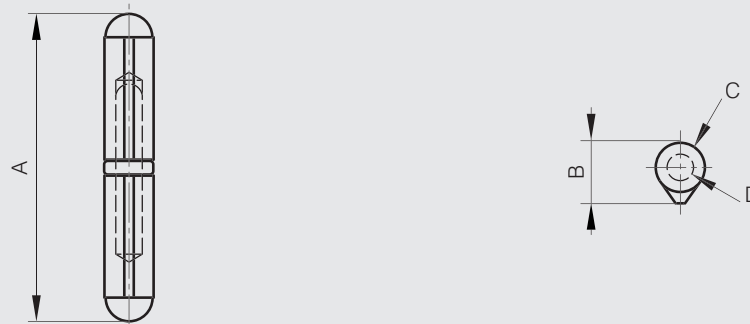


### Round top weld-on steel hinges - steel pin - ball bearing

Fixed pin.



Part number	Material	Finish	A	B	C	D	Weight (g)
14-7-3610	steel	raw	141	22.5	18	12	272
14-7-3611	steel	raw	155.5	25.5	20	13	392
14-7-3612	steel	raw	206	29	23	16	662

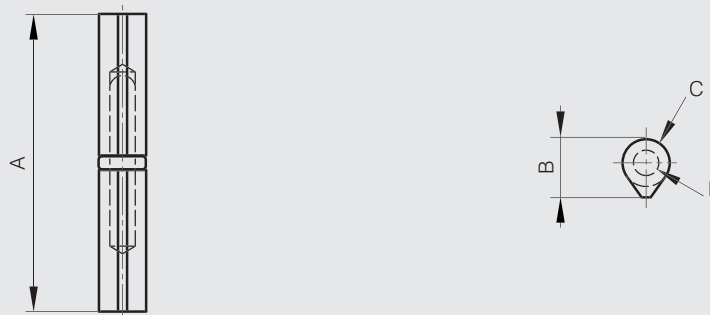


### Flat top weld-on steel hinges - steel pin - ball bearing

Fixed pin.



Part number	Material	Finish	A	B	C	D	Weight (g)
14-7-3613	steel	raw	84	16	13	7	92
14-7-3614	steel	raw	104	20	16	9	117

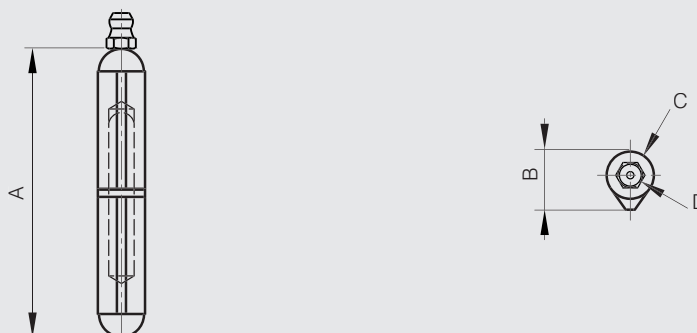


### Round top weld-on steel hinges - steel pin - brass washer - with grease nipple

Fixed pin and washer.



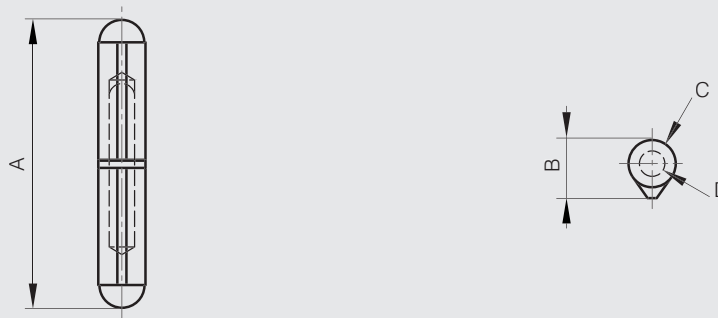
Part number	Material	Finish	A	B	C	D	Weight (g)
14-7-3796	steel	raw	60	12	10	6	36
14-7-3786	steel	raw	80	16	13	8	84
14-7-3787	steel	raw	100	20	16	10	160
14-7-3788	steel	raw	120	20	16	11	195
14-7-3793	steel	raw	135	22.5	18	12	270
14-7-3789	steel	raw	150	25.5	20	13	390
14-7-3790	steel	raw	180	25.5	20	13	465
14-7-3791	steel	raw	200	29	23	16	660



### Round top weld-on aluminium hinges - stainless steel pin - stainless steel washer



Part number	Material	Finish	A	B	C	D	Weight (g)
14-7-3815	aluminium	raw	60	12	10	6	20
14-7-3816	aluminium	raw	80	16	13	8	40
14-7-3817	aluminium	raw	100	20	16	10	75
14-7-3818	aluminium	raw	120	20	16	11	93

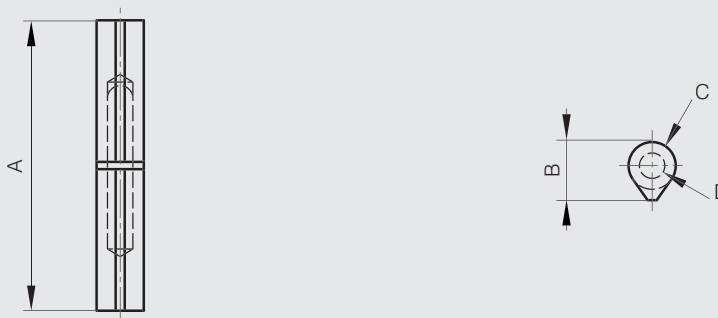


### Flat top weld-on steel hinges - brass washer



Fixed pin and washer.

Part number	Material	Finish	A	B	C	D	Pin material	Weight (g)
14-7-3583	steel	raw	45	10	8	5	steel	20
14-7-3569	steel	raw	60	12	10	6	steel	40
14-7-3570	steel	raw	80	16	13	7	steel	90
14-7-3571	steel	raw	100	20	16	9	steel	115
14-7-3603	steel	raw	120	20	16	9	steel	135
14-7-3572	steel	raw	140	25.5	20	11	steel	370
14-7-3584	steel	raw	200	29	23	16	steel	600
14-7-3597	steel	raw	45	10	8	5	brass	20
14-7-3598	steel	raw	60	12	10	6	brass	40
14-7-3599	steel	raw	80	16	13	7	brass	90
14-7-3600	steel	raw	100	20	16	9	brass	115
14-7-3604	steel	raw	120	20	16	9	brass	135
14-7-3601	steel	raw	140	25.5	20	11	brass	370

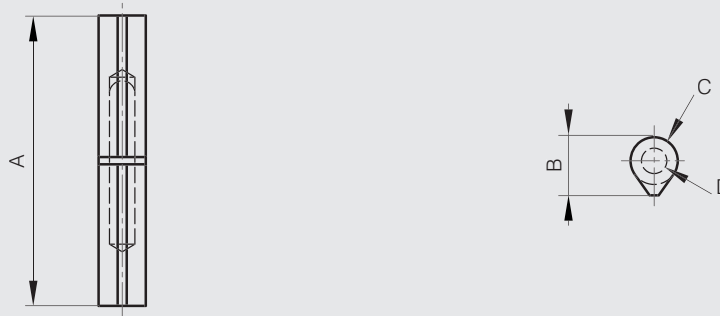


### Flat top weld-on stainless steel hinges - stainless steel pin - brass washer

Fixed pin and washer.



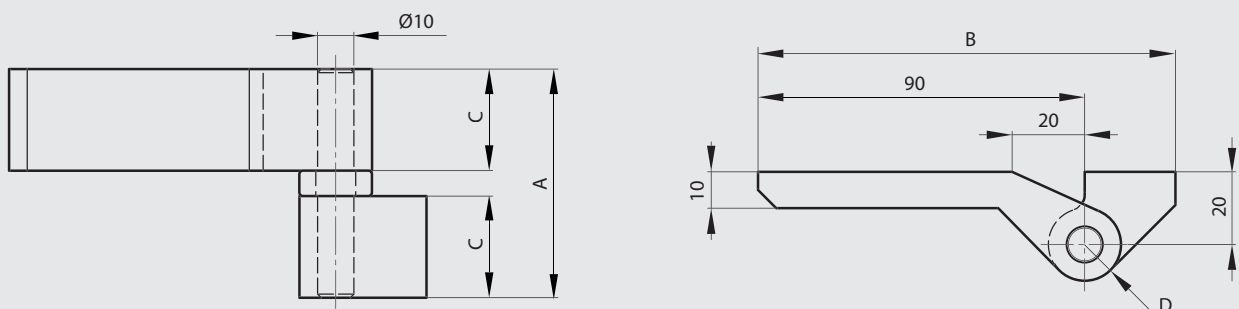
Part number	Material	Finish	A	B	C	D	Weight (g)
14-7-3693	304 stainless steel	raw	60	12	10	6	40
14-7-3696	304 stainless steel	raw	80	16	13	7	90
14-7-3697	304 stainless steel	raw	100	20	16	9	115
14-7-3698	304 stainless steel	raw	120	20	16	9	135



### Swivel pin with ball bearing



Part number	Material	Finish	A	B	C	D	Weight (g)
14-1-3883	steel	raw	63	115	28	10	482

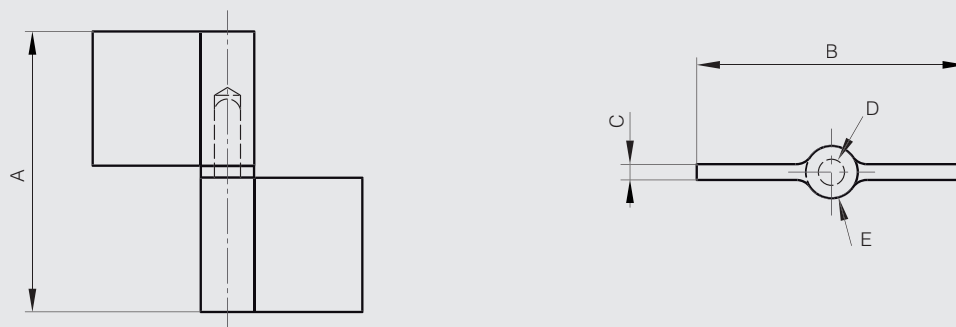
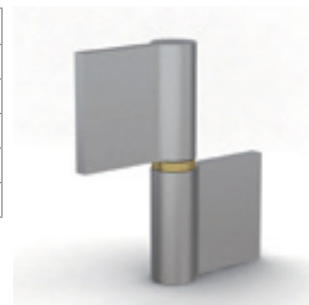


### Flag hinges A - steel pin - brass washer

Fixed pin.



Part number	Material	Finish	A	B	C	D	E	Weight (g)
14-7-3634	steel	raw	63	80	4.2	8	15.5	150
14-7-3635	steel	raw	83.5	80	5.1	8	16	250
14-7-3636	steel	raw	104	92	5.5	9	17	390
14-7-3637	steel	raw	124	108	6.5	10	19	600
14-7-3638	steel	raw	144	108	6.5	10	19	720

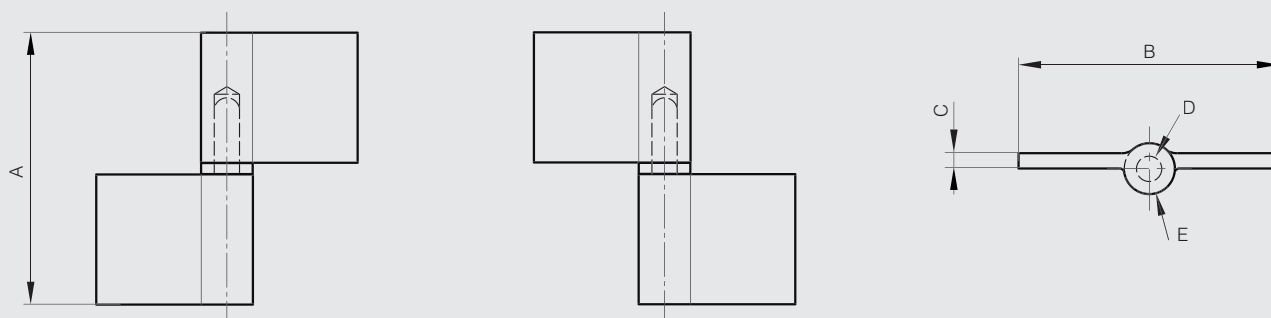
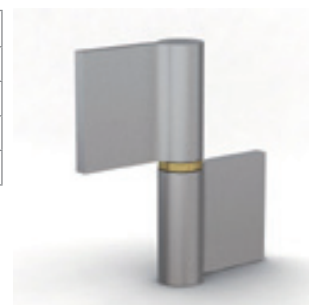


### Flag hinges B - steel pin - brass washer

Fixed pin.



Part number	Material	Finish	A	B	C	D	E	Note	Weight (g)
14-7-3641	steel	raw	83.5	80	5.1	8	16	type 1	250
14-7-3642	steel	raw	83.5	80	5.1	8	16	type 2	250
14-7-3643	steel	raw	104	92	5.5	9	17	type 1	390
14-7-3644	steel	raw	104	92	5.5	9	17	type 2	390



14-7-3641 & 14-7-3643

14-7-3642 & 14-7-3644



### Heavy duty pin hinges

With chamfered edges.



Part number	Material	Finish	A	B	C	D	E	F	H	S	Weight (g)
12-7-3810	303 stainless steel	brushed	64	13	16	6	16	16	9.5	M5x6	90
12-7-3811	303 stainless steel	brushed	76	13	19	6	19	18	13	M6x7.5	130

