



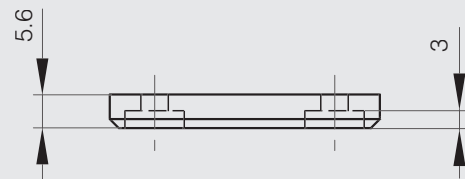
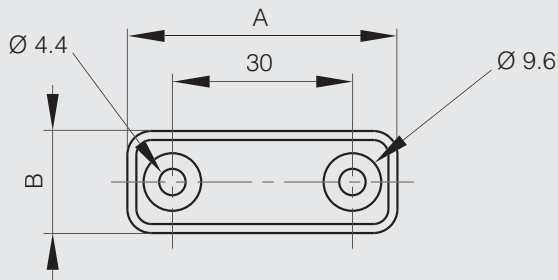
Sealed magnetic catches

Sealed compact magnetic catch

This part number is associated with counterplate 16-7-4205.



Part number	Material	Finish	A	B	Force	Weight (g)
16-7-4204	polymer	white	45	17	3kg	9

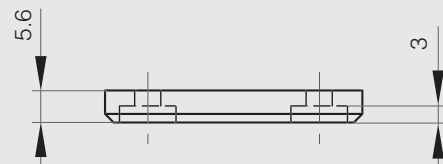
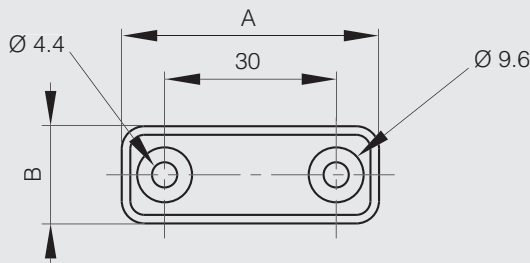


Counterplate for sealed magnetic catch 16-7-4204

This counterplate has the same dimensions as the part listed above. It has a blue dot on the backside to differentiate it from the catch.



Part number	Material	Finish	A	B	Weight (g)
16-7-4205	polymer	white	45	17	9





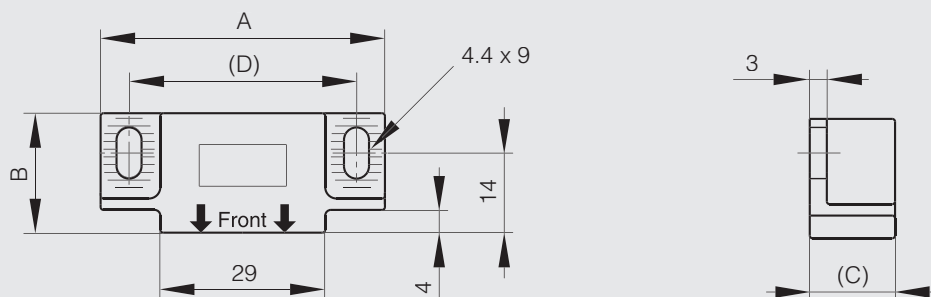
Sealed magnetic catches

Sealed magnetic catch

Strike sold separately.



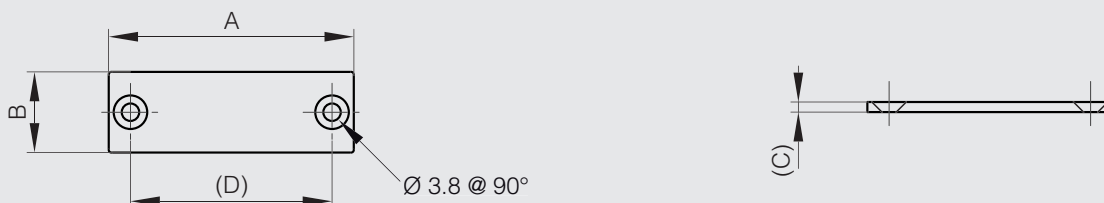
Part number	Material	Finish	A	B	C	D	Force	Weight (g)
16-7-4081	polymer	white	50	21	13	40	3kg	21
16-7-4206	polymer	black	50	21	13	40	3kg	21



Counterplate for sealed magnetic catch 16-7-4081 and 16-7-4206



Part number	Material	Finish	A	B	C	D	Weight (g)
16-7-4082	430 Ti stainless steel	raw	49	15	2	40	10





Magnetic catches

Compact magnetic catches

Ultra thin compact magnetic catch

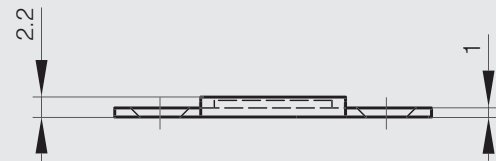
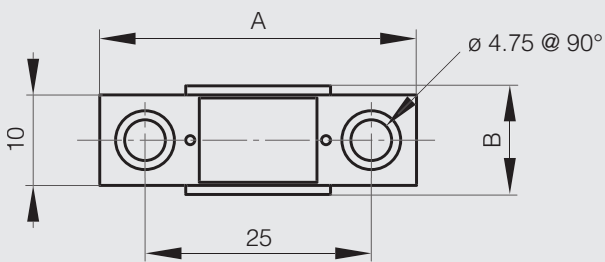
Suitable for temperatures below 80°C.

To avoid breakage, counterplate should not connect with magnet.

Screw heads should not protrude above the base plate.



Part number	Material	Finish	A	B	Force	Weight (g)
16-7-4033	steel	nickel plated	35	12	2.7kg	4



Compact magnetic catch



Suitable for temperatures below 80°C.

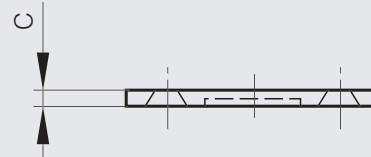
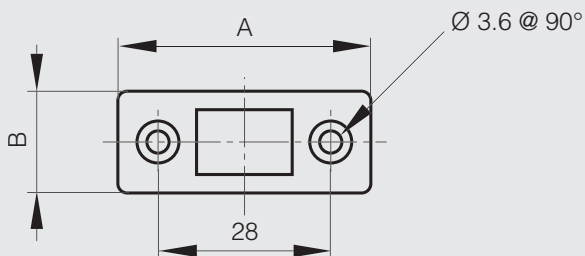
To avoid breakage, counterplate should not connect with magnet.

Screw heads should not protrude above the base plate.

For the stainless steel version, magnet is coated with acrylic resin to be corrosion resistant.



Part number	Material	Finish	A	B	C	Force	Weight (g)
16-7-4207	steel	nickel plated	41	16.5	2.6	4kg	12
NEW 16-7-4308	steel	nickel plated	41	16.5	3.0	8kg	14
NEW 16-7-4309	430 stainless steel	polished	41	16.5	2.8	5kg	13



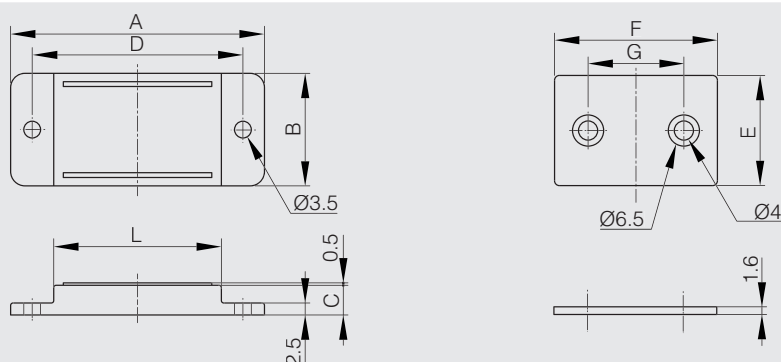


Compact magnetic catches

Low profile magnetic catch

POLYMER

Part number	Material	Finish	A	B	C	D	E	F	G	L	Force	Weight (g)
16-7-4254	ABS	black	43	17	6	34	17	24	13	25	1kg	14
16-7-4255	ABS	black	53	23.5	6.2	44	23	34	20	35	3kg	32
16-7-4256	ABS	black	64	24.5	7	55	24	45	30	46	5kg	48





Screw-on magnetic catches

Mini screw-on magnetic catch with counter plate - force 3 kg



Mini magnetic catch is ideal for tight spaces.

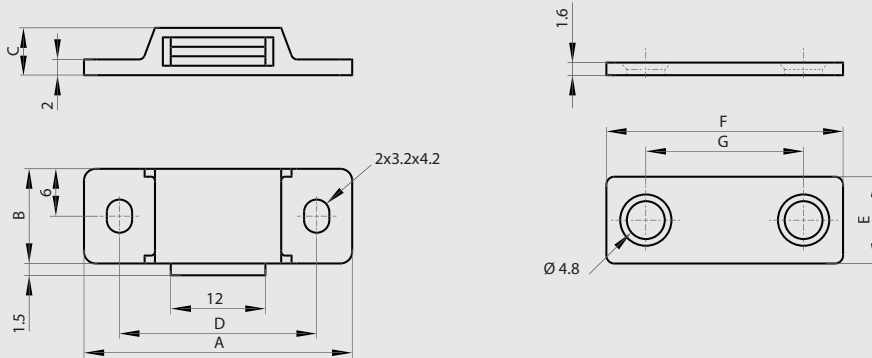
Polymer materials: PBT, steel, neodymium.

Counter plate: steel.

Comes with 4 screws.



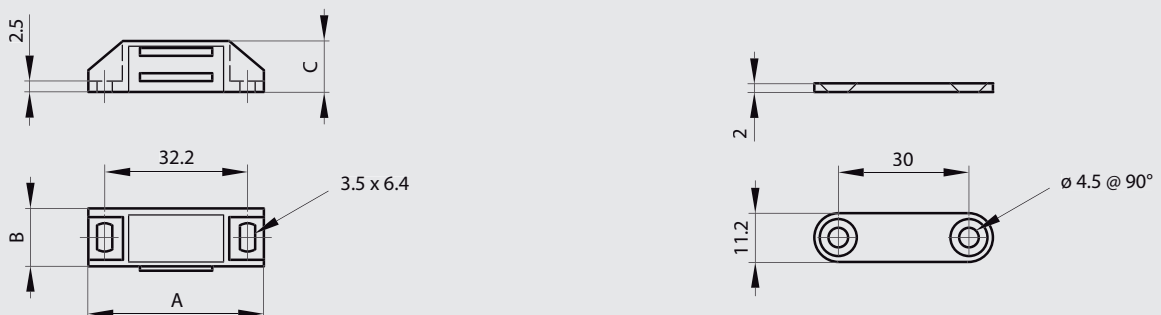
Part number	Material	Finish	A	B	C	D	E	F	G	Force	Weight
NEW 16-7-4293	polymer	white	34	12	6	25	11	30	20	3kg	13



Screw-on magnetic catch with counterplate - force 3 kg



Part number	Material	Finish	A	B	C	Force	Weight (g)
16-7-3492	polymer	white	39.8	13.7	11.7	2 to 3kg	16.5



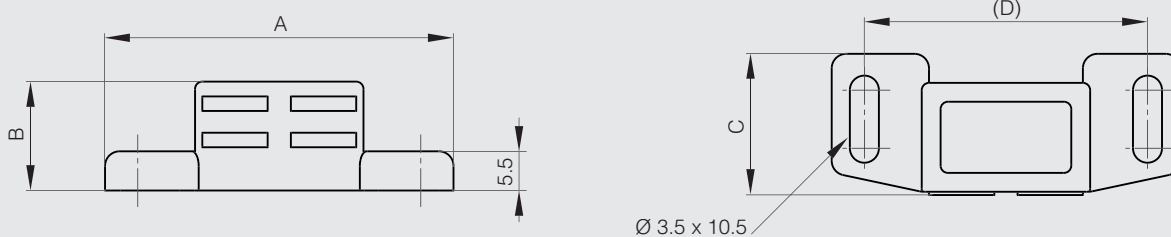


Screw-on magnetic catches

Screw-on magnetic catch without counterplate - force 4 kg

POLYMER RoHS

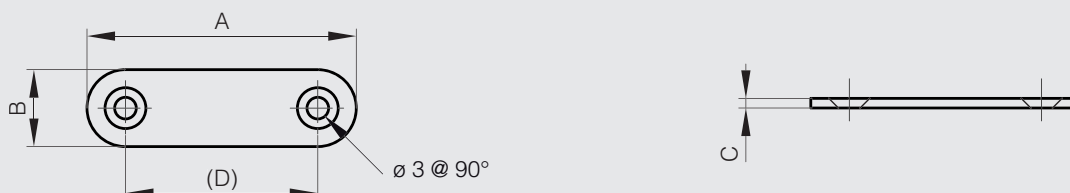
Part number	Material	Finish	A	B	C	D	Force	Weight (g)
16-7-3390	polymer	white	48	15	19.2	38	4kg	13



Counter plate for magnetic catch 16-7-3390

STEEL RoHS

Part number	Material	Finish	A	B	C	D	Weight (g)
16-7-3351	steel	zinc plated	41	14	1.5	31	6



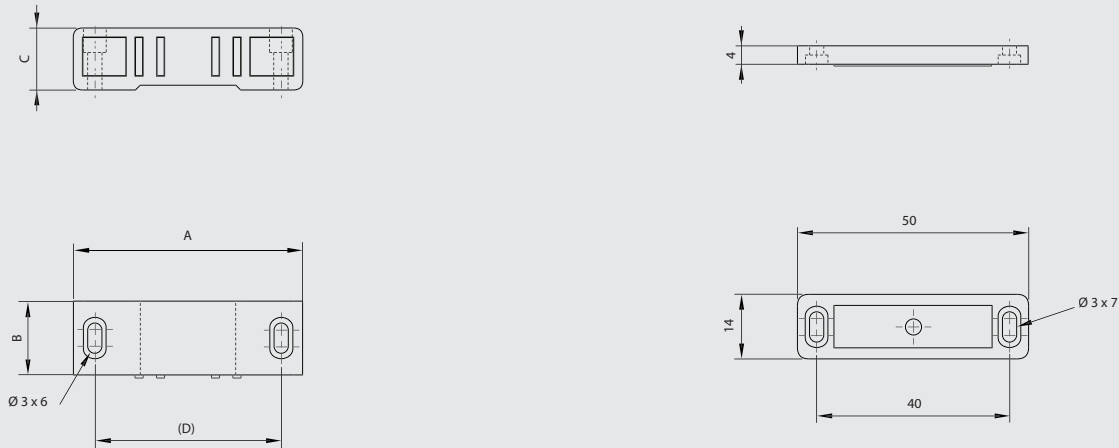


Screw-on magnetic catches

Screw-on magnetic catches with counterplate - force 4 kg



Part number	Material	Finish	A	B	C	D	Force	Weight (g)
16-7-4278	polymer	white	48	15.5	13	37.5	4kg	22



Screw-on magnetic catches with counterplate - force 4 kg - high temperature resistance



Part number	Material	Finish	A	B	C	Force	Note	Weight (g)
16-7-3494	zinc die-cast	nickel plated	49.4	16.4	15.6	4kg	temperature up to 80°C	56
16-7-3610	zinc die-cast	nickel plated	49.4	16.4	15.6	4kg	temperature up to 300°C	56



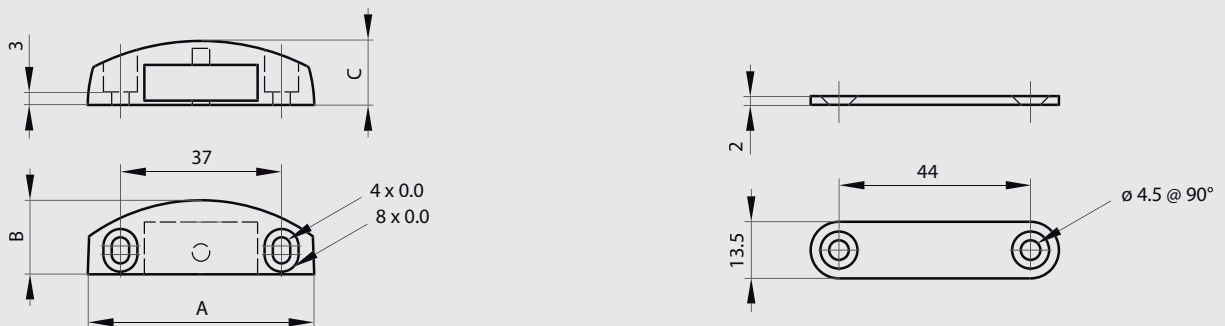


Screw-on magnetic catches

Screw-on magnetic catch with counterplate - force 4 kg



Part number	Material	Finish	A	B	C	Force	Weight (g)
16-7-3483	zinc die-cast	nickel plated	54	16	15	4kg	49

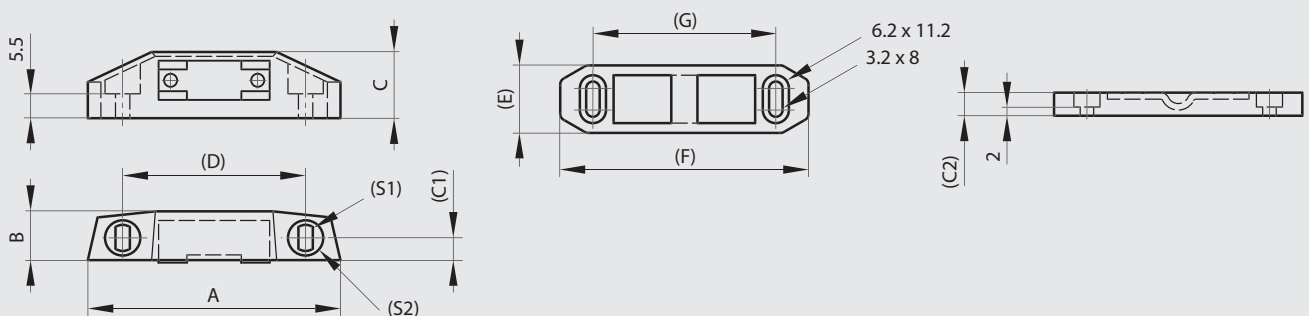


Screw-on magnetic catches with counterplate - force 3 to 6 kg

Forces valid with the related counterplate.



Part number	Material	Finish	A	B	C	C1	C2	D	E	F	G	S1	S2	Force	Weight
16-7-3487	polymer	white	58	12	15.2	5	5	42	15.5	57	42	3.2x6	8.1	4kg	31
16-7-3488	polymer	white	62.1	12.6	15.2	6	5.5	45	16.4	62	44.7	3.2x6	8.1	6kg	41



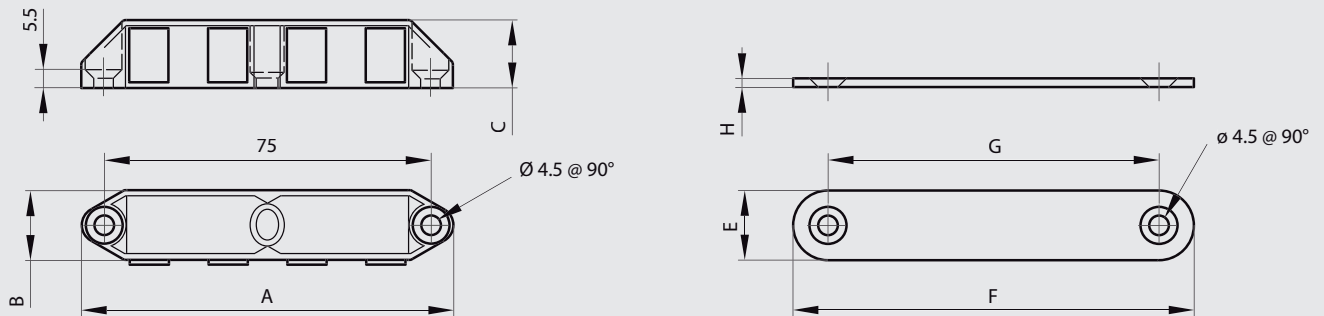


Screw-on magnetic catches

Screw-on magnetic catches with counterplate - force 8 kg - high temperature resistance



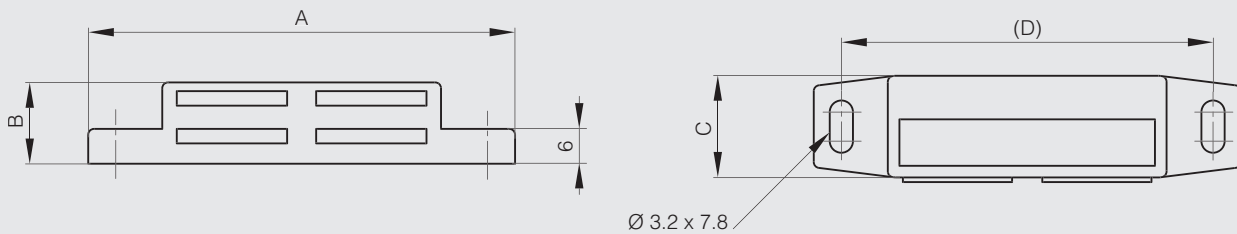
Part number	Material	Finish	A	B	C	E	F	G	H	Force	Note	Weight (g)
16-7-3391	zinc die-cast	nickel plated	86	16.4	15.6	16	92	76	2	8kg	temperature up to 80°C	112
16-7-3611	zinc die-cast	nickel plated	86	16.4	15.6	13	92	76	2	8kg	temperature up to 300°C	112



Screw-on magnetic catch without counterplate - force 12 kg



Part number	Material	Finish	A	B	C	D	Force	Weight (g)
16-7-3672	polymer	white	74	14	17.5	64	12kg	37



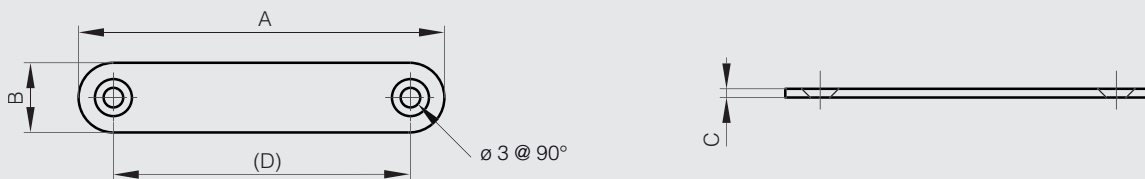


Screw-on magnetic catches

Counter plate for magnetic catch 16-7-3672

STEEL

Part number	Material	Finish	A	B	C	D	Weight (g)
16-7-3673	steel	zinc plated	66	12	2	54	11



Screw-on magnetic catch with counter plate - force 7 kg



BRASS

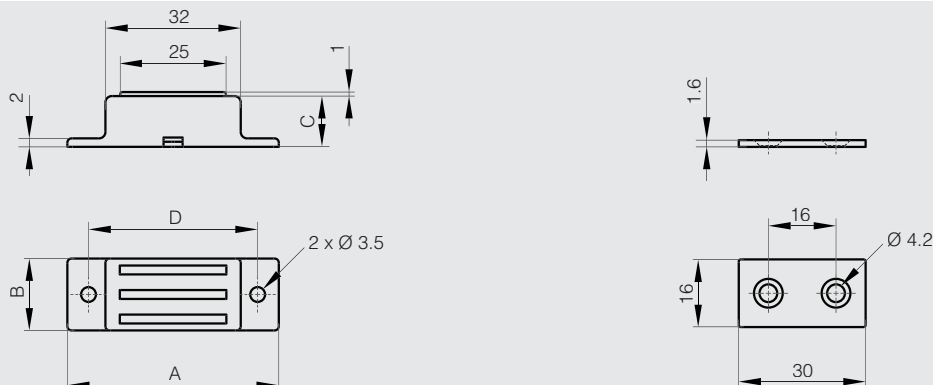
Supplied with counter plate.

Material:

Catch: brass / steel / ferrite / aluminium alloy.

Counter plate: nickel plated steel.

Part number	Material	Finish	A	B	C	D	Force	Weight (g)
NEW 16-7-4296	brass	nickel plated	50	17	12	40	7kg	32





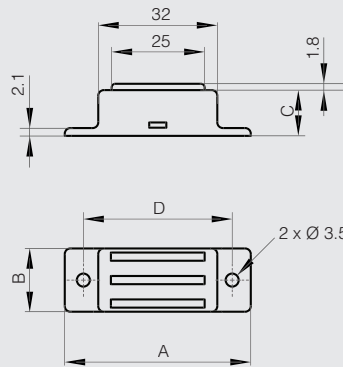
Screw-on magnetic catches

Screw-on magnetic catch without counter plate - force 14 kg



Strong magnetic force.
 Material: 304 stainless steel / steel / neodymium.
 Counter plate not included.

Part number	Material	Finish	A	B	C	D	Force	Weight (g)
NEW 16-7-4297	304 stainless steel	polished	50	17	12.3	40	14kg	41

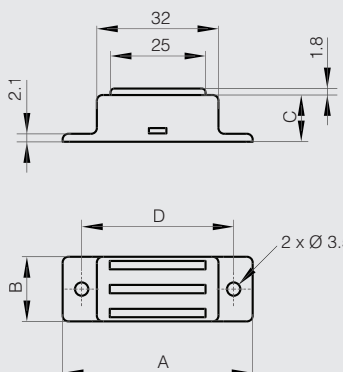


Screw-on magnetic catch without counter plate - force 7 and 14 kg - high temperature resistance



Suitable for high temperature environments up to 250°C.
 Strong magnetic force. Corrosion free.
 Counter plate not included.

Part number	Material	Finish	A	B	C	D	Force	Weight (g)
NEW 16-7-4294	304 stainless steel	polished	50	17	12.3	40	7.1Kg	40
NEW 16-7-4295	304 stainless steel	polished	50	17	12.3	40	14.3Kg	40





Snap-in magnetic catches

Snap-in magnets without counterplate

Snap-in magnets for sheet metal applications. Suitable for material thicknesses 1.6 mm or 2.6 mm.

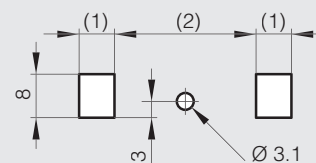
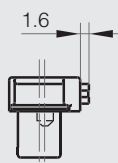
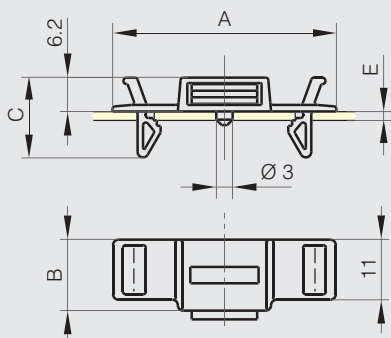
E denotes material thickness.

Cut-out varies to suit metal thickness.

Flex-tab for easy removal.

POLYMER

Part number	Material	Finish	A	B	C	Force	Weight (g)
16-7-4209	polymer	black	41	13	14.6	3kg	5.5

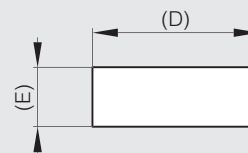
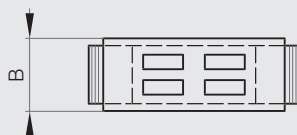
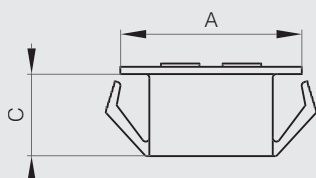


E	(1)	(2)
1.6	6.5	26.0
2.6	5.8	24.6

Snap-in magnets

POLYMER RoHS

Part number	Material	Finish	A	B	C	D	E	Force	Note	Weight (g)
16-7-4013	polypropylene	white	25.5	12.3	10.4	23	11	1.5kg	for sheetmetal thickness 1.5 mm	4
16-7-4014	polypropylene	white	25.5	9.6	11	23	8.2	1.8kg	for sheetmetal thickness 1.5 mm	4
16-7-4015	polypropylene	white	39.5	10	11	35	8.2	4kg	for sheetmetal thickness 1.5 mm	8
16-7-3674	polypropylene	black	54	12.5	14.5	51.5	10.8	15kg	for sheetmetal thickness 2.0 mm	32



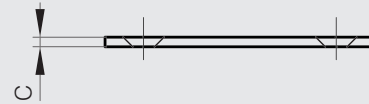
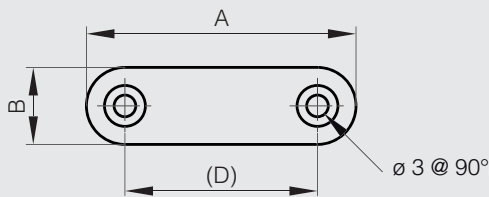


Counterplates for snap-in magnets

Counterplates for part numbers 16-7-4013, 16-7-4014, 16-7-4015 and 16-7-3674.

STEEL

Part number	Material	Finish	A	B	C	D	Note	Weight (g)
16-7-3351	steel	zinc plated	41	14	1.5	31	for part numbers 16-7-4013 and 16-7-4014	6
16-7-3673	steel	zinc plated	66	12	2	54	for part numbers 16-7-3674 and 16-7-4015	11

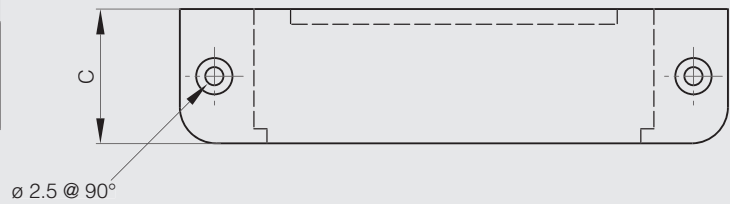
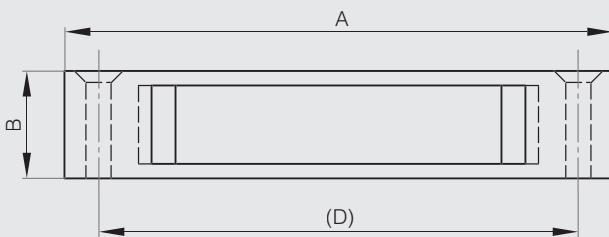


Housing

Housing for part number 16-7-3674.
For screw-mounting.

POLYMER

Part number	Material	Finish	A	B	C	D	Weight (g)
16-7-3675	polymer	black	75.5	14.8	18.5	65	8



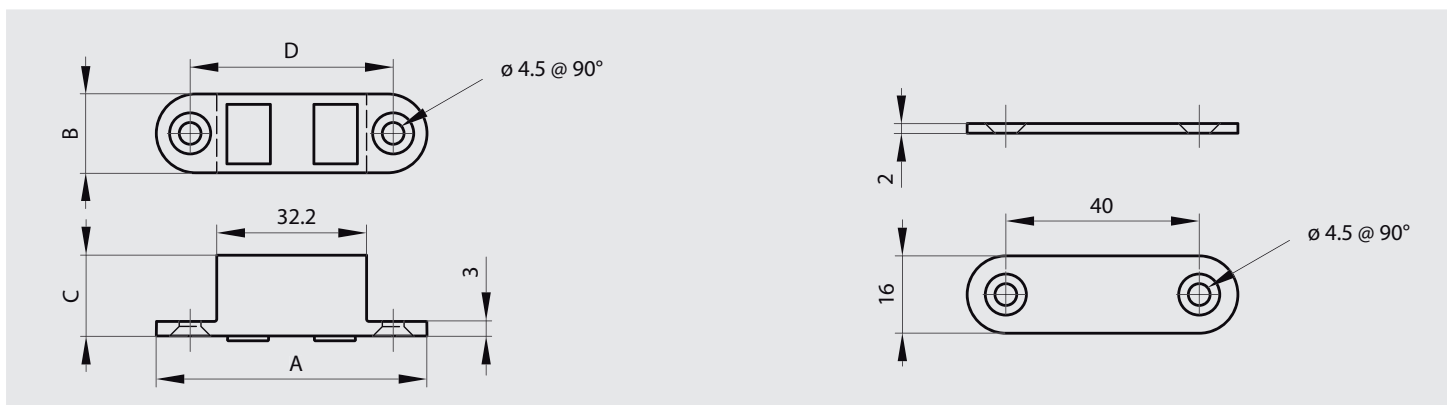


Flush magnetic catches

Flush magnet with high temperature resistance - force 4 kg



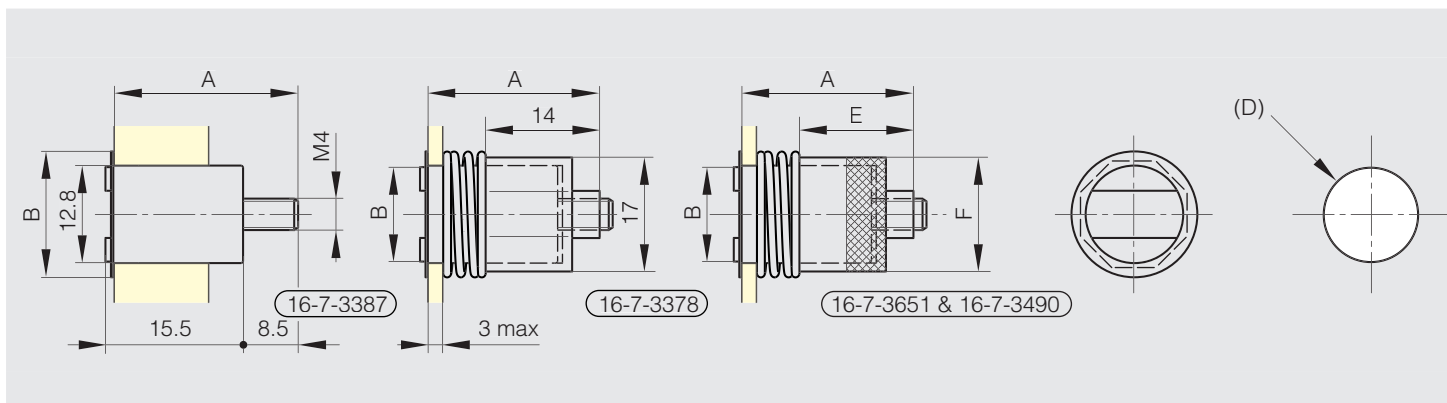
Part number	Material	Finish	A	B	C	D	Force	Note	Weight (g)
16-7-3484	zinc die-cast	nickel plated	56	16.3	16.7	42	4kg	temperature up to 150°C	63.5



Flush compact magnetic catch without counterplate - force 5 kg



Part number	Material	Finish	A	B	D	Force	Weight (g)
16-7-3387	steel	zinc plated	24	16	13.5	5kg	13





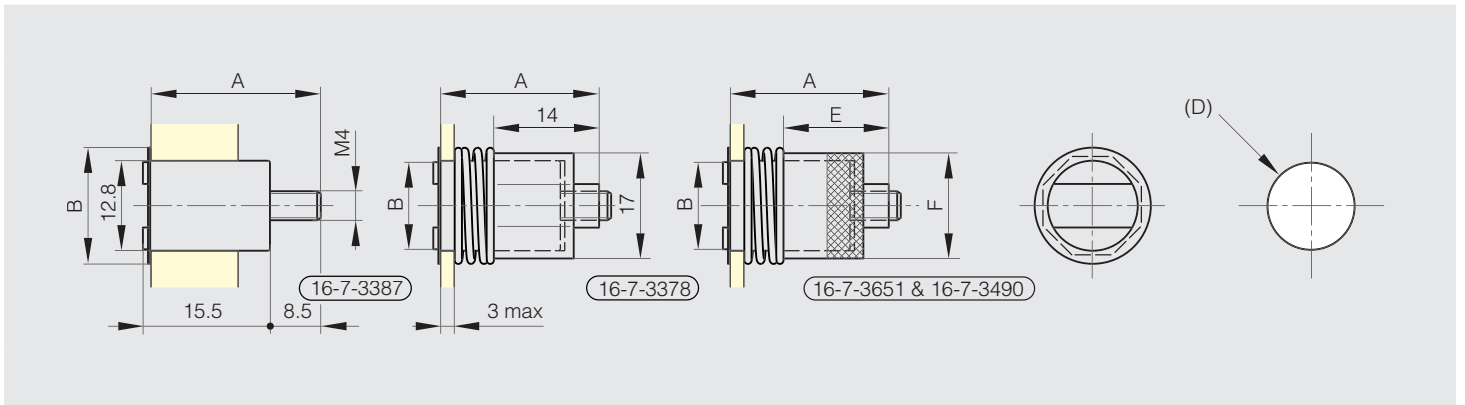
Flush magnetic catches

Flush compact magnetic catch without counterplate - force 4.2 kg

Fixing by plastic nut.



Part number	Material	Finish	A	B	D	Force	Weight (g)
16-7-3378	steel	zinc plated	24	12	13.5	4.2kg	14



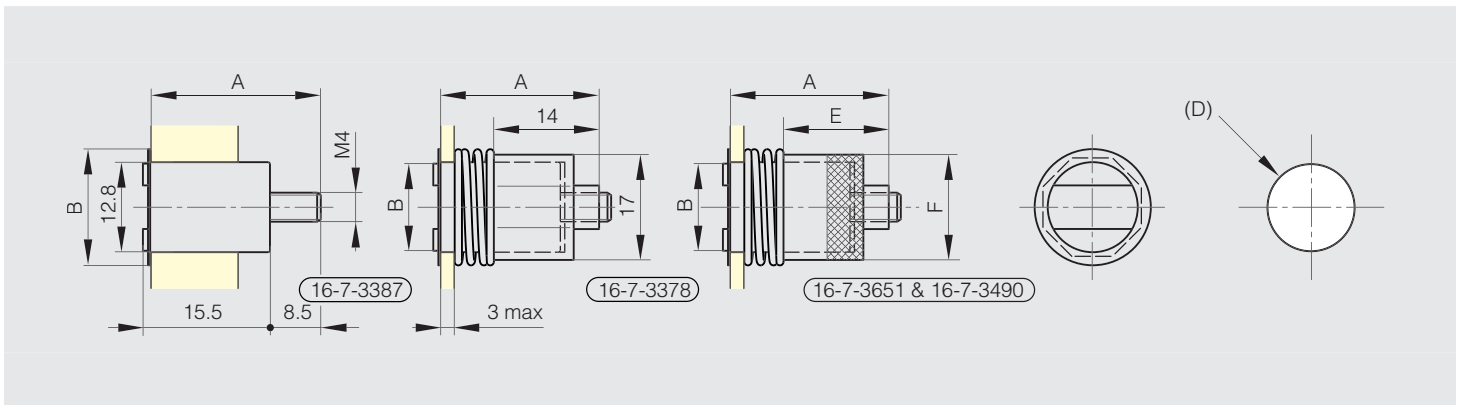
Flush compact catch without counterplate - high temperature resistance

Temperature resistance up to 250°C.

Fixing by knurled nut in aluminium.



Part number	Material	Finish	A	B	D	E	F	Force	Weight (g)
16-7-3490	steel	zinc plated	26	12	13.5	14.2	16.5	4.2kg	17.5
16-7-3651	steel	zinc plated	32	16	17.5	19.2	21.5	8kg	40



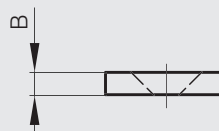
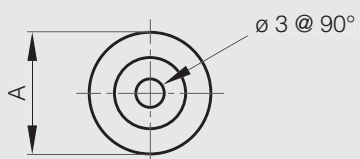


Flush magnetic catches

Counter plate for part numbers 16-7-3378, 16-7-3387, 16-7-3490 and 16-7-3651

STEEL  RoHS

Part number	Material	Finish	A	B	Weight (g)
16-7-3349	steel	zinc plated	15.1	3	4





Self-adhesive magnetic profile



Sold in 30 meter rolls.

The weight indicated in grams in the table is for 1 meter.

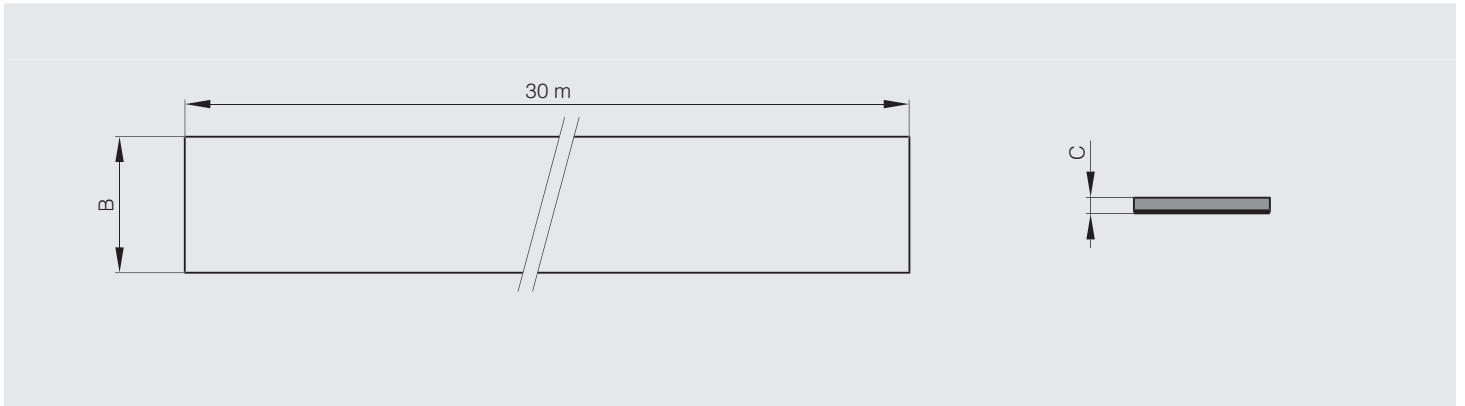
The weight of a roll (30 meters) is:

- 3.36 kg for the part number 16-7-3682.
- 8.70 kg for the part number 16-7-3683.

Heat resistance : 100°C



Part number	Material	Finish	B	C	Force	Weight (g)
16-7-3682	flexible magnet	self adhesive	19	1.5	55 g/cm ²	112
NEW 16-7-3683	flexible magnet	self adhesive	50	1.5	55 g/cm ²	290





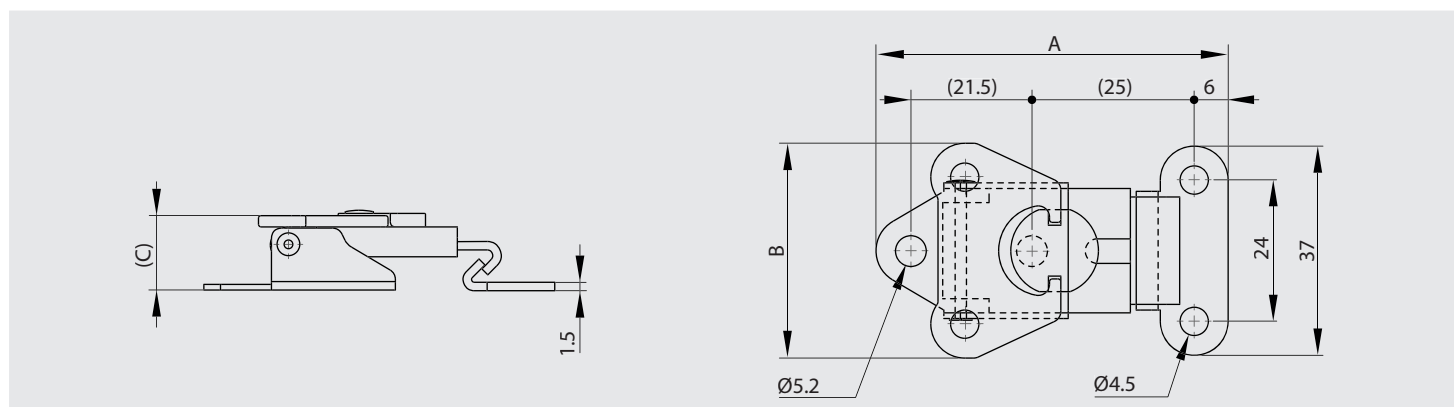
Rotary toggle latches

Rotary toggle latches

Strike included.

STAINLESS STEEL STEEL RoHS

Part number	Material	Finish	A	B	C	Note	Weight (g)
16-1-9012	steel	zinc plated	62	38	13.2	with strike	50
16-1-9013	304 stainless steel	raw	62	38	13.2	with strike	50

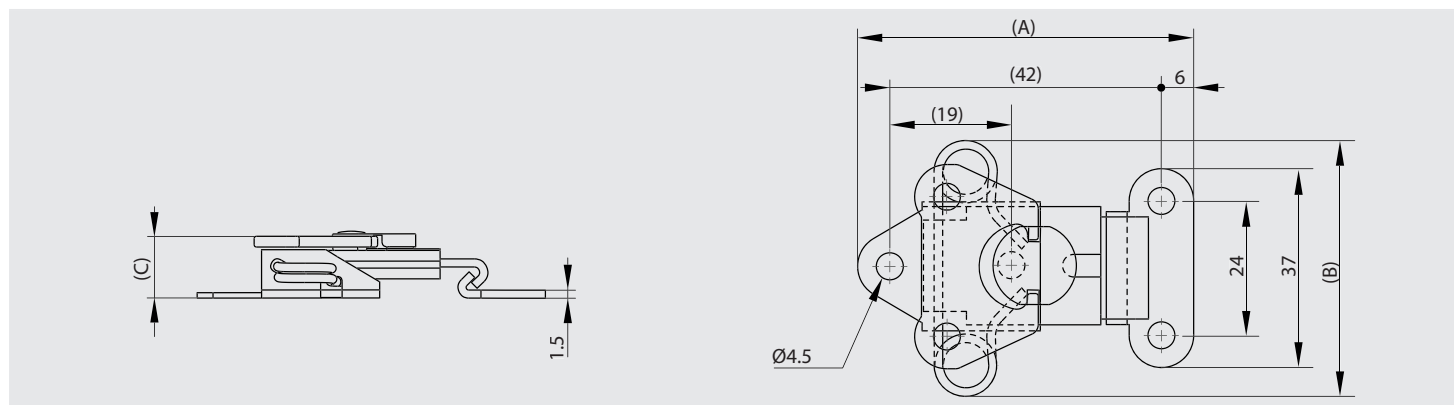


Spring loaded rotary toggle latches

Strike included.

STAINLESS STEEL STEEL RoHS

Part number	Material	Finish	A	B	C	Note	Weight (g)
16-1-9014	steel	zinc plated	62	46	12	with strike	60
16-1-9015	304 stainless steel	raw	62	46	12	with strike	60





Rotary toggle latches

Padlockable rotary toggle latches

Strike included.

STAINLESS
STEEL STEEL RoHS

Part number	Material	Finish	A	B	C	Note	Weight (g)
16-1-9016	steel	zinc plated	64	38	24	with strike	60
16-1-9017	304 stainless steel	raw	64	38	24	with strike	60

