

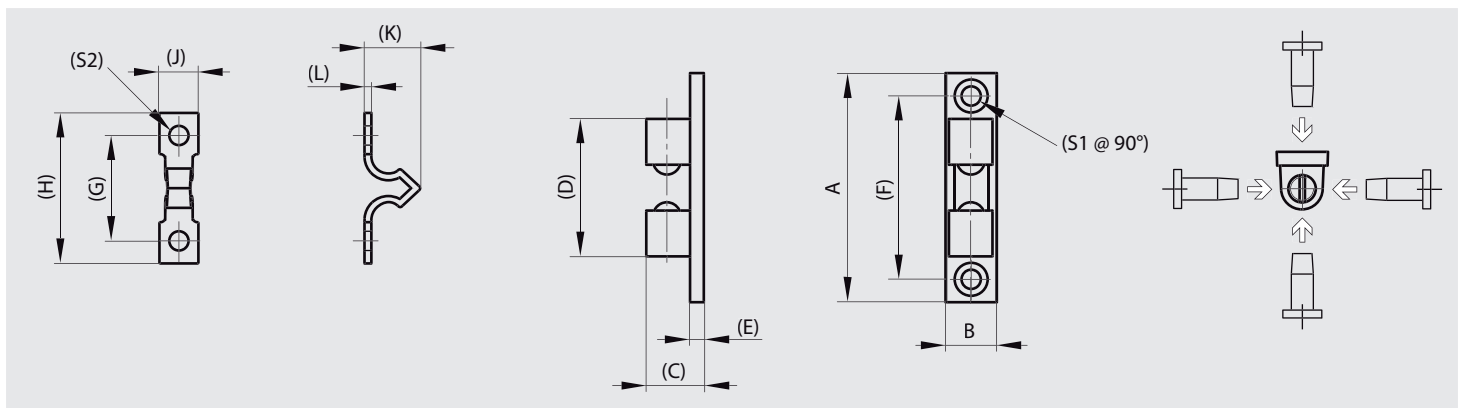


### Dual ball catches A

Coutersunk on both sides of the catch.  
 Strike can be secured on 4 sides of the catch.  
 Body of the catch: zinc die-cast with brass finish.  
 Balls: in steel  
 Strike: in steel with brass finish.



Part number	Material	Finish	A	B	C	D	E	F	G	H	J	K	L	S1	S2	Weight (g)
16-7-3469	zinc die-cast	brass	49.9	11.4	12.6	30	3	40	20.2	30.5	8.1	17	1.4	4.3	4	21.5
16-7-3470	zinc die-cast	brass	60	14.6	14.7	38	3	48	27	42	10.2	20	2	4.2	5	37.5
16-7-3471	zinc die-cast	brass	70	17.3	16.5	43.6	3.5	57	34	50	12	22.5	2	4.3	3.5	58.8

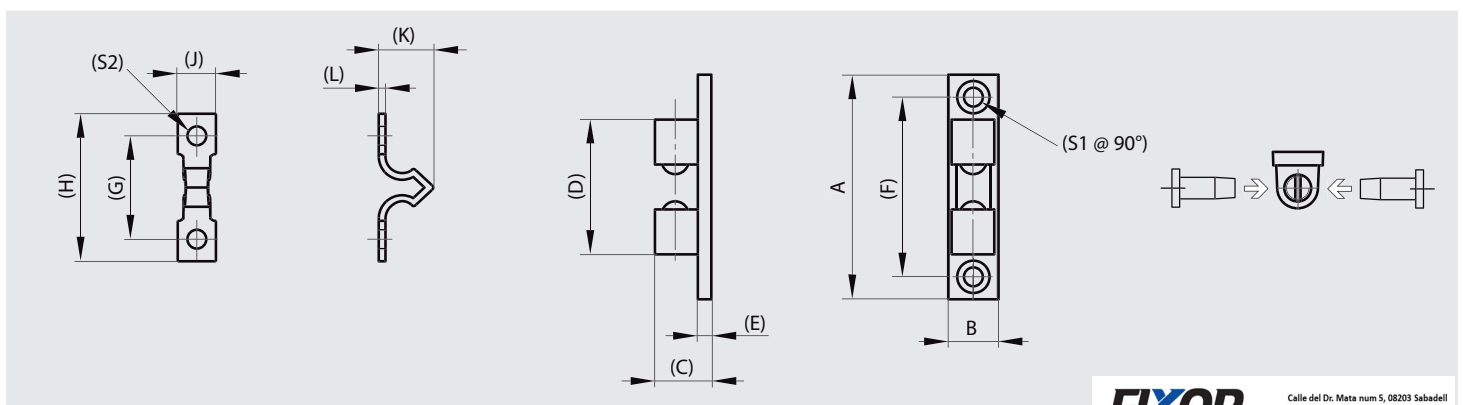


### Dual ball catches B

Strike can be secured on 2 sides of the catch.  
 Body of the catch: zinc die-cast with brass finish.  
 Balls: in steel  
 Strike: in steel with brass finish.



Part number	Material	Finish	A	B	C	D	E	F	G	H	J	K	L	S1	S2	Weight (g)
16-7-3423	zinc die-cast	brass	41.7	8.5	10.7	26	2.6	34	16.9	25.7	8	13.5	1.2	3.5	3	13.7





# Mechanical catches

## Ball catches

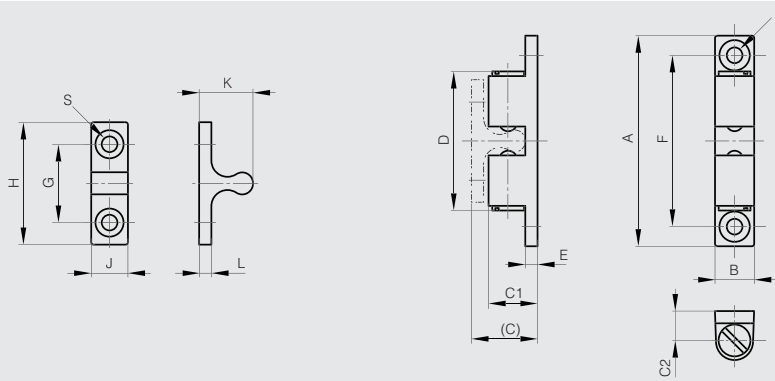
### Stainless steel dual ball catches



Can be installed vertically or horizontally.  
Catch force is not adjustable. Do not turn the slot part.



Part number	Material	Finish	A	B	C	C1	C2	D	E	F	G	H	J	K	■	■	■	■
<b>NEW</b> 16-7-4305	316 stainless steel	polished	43	8	13.5	10	6	28.4	2.5	35	16	25	7.5	11	2.5	3.2	1.3kg	18
<b>NEW</b> 16-7-4306	316 stainless steel	polished	50	10	16.1	12.2	7.7	31.5	2.9	40	20	30	9	13.2	2.9	4.2	1.8kg	30
<b>NEW</b> 16-7-4307	316 stainless steel	polished	70	13	23	17	10.5	51	4	60	30	42	10.5	19	4	4.2	3.9kg	83



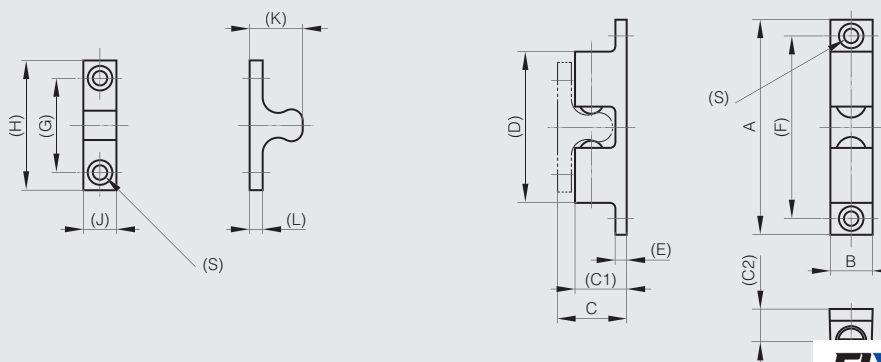
### Zinc die-cast dual ball catches



Body: zinc die-cast, chrome plated.  
Balls: steel.



Part number	Material	Finish	A	B	C	C1	C2	D	E	F	G	H	J	K	■	■	Force	Weight (g)
16-7-4211	zinc die-cast	chrome plated	42.5	8	14	10	6.5	26.7	2.5	35	16	25	7.5	11.3	2.5	3.2	3kg	16
16-7-4212	zinc die-cast	chrome plated	50	10	16	12.5	7.4	29.8	3	40	20	30	9	12.3	2.5	4.2	3.3kg	26
16-7-4213	zinc die-cast	chrome plated	70	13.5	21.2	17	11	49	4	60	30	42	10.5	17.2	3	4.2	3.5kg	70



Calle del Dr. Mata num 5, 08203 Sabadell  
Tel 93 710 41 60, tecnica@fixor.es  
www.fixor.es



## Ball catches

### Ball catches

BRASS RoHS

Part number	Material	Finish	A	B	C	D	E	F	Weight (g)
16-7-3330	brass	raw	8	7.4	4.5	6.5	9	16	3.7
16-7-3331	brass	raw	10	8.5	6.5	8	11	16	6.5
16-7-3332	brass	raw	12	9	7	10	13	19.5	9.9
16-7-3333	brass	raw	13	10.5	7.2	10	14	19.5	13.5





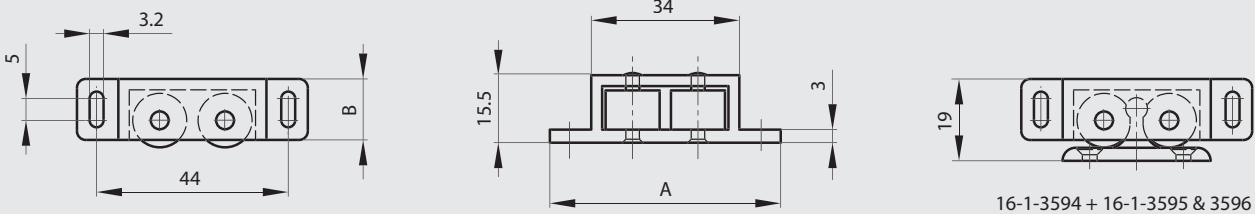
## Roller catches

### Roller catch without counterplate

Rubber rollers. Housing in ABS. Shaft in brass.



Part number	Material	Finish	A	B	Force	Weight (g)
16-1-3594	polymer	white	53	14	1.5kg maxi	9

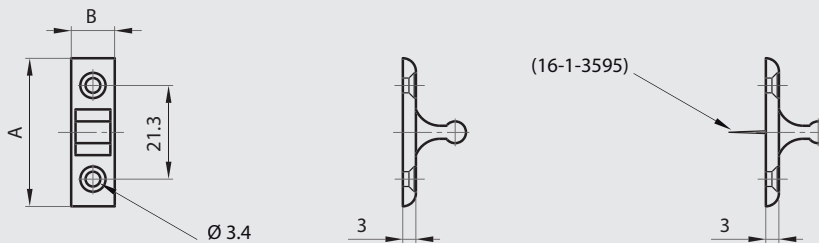


### Counterplates for part number 16-1-3594

Strike in ABS.



Part number	Material	Finish	A	B	Note	Weight (g)
16-1-3595	polymer	white	34	10	with pin	1.5
16-1-3596	polymer	white	34	10	without pin	1.5



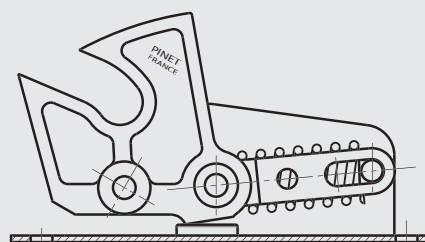
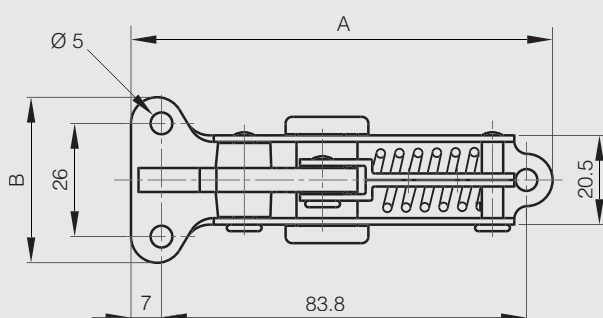


### Catch

Nylon hook, rubber damper.

STEEL

Part number	Material	Finish	A	B	Force	Weight (g)
16-1-3271	steel	zinc plated	97	39	8kg	100

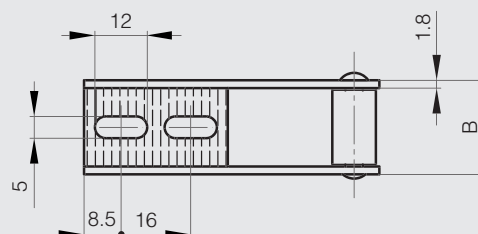
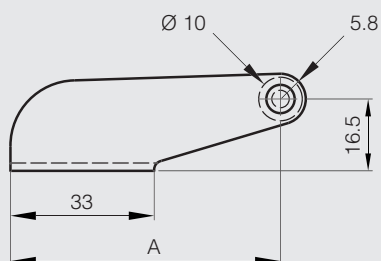


### Counterplate for part number 16-1-3271

Nylon roller.

STEEL

Part number	Material	Finish	A	B	Weight (g)
16-1-3272	steel	chrome plated	62	22	41



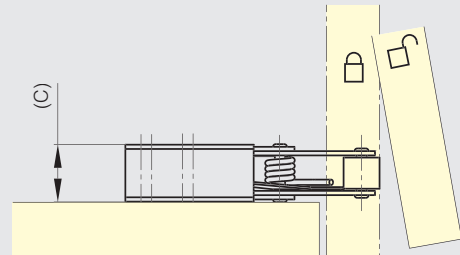
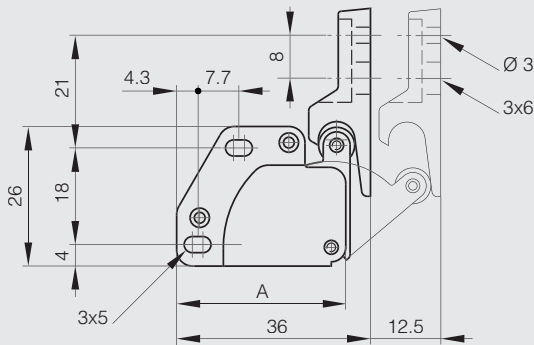


## Touch latches

### Touch latch in steel



Part number	Material	Finish	A	C	Weight (g)
16-7-3838	steel	nickel plated and white plastic	33	11	20



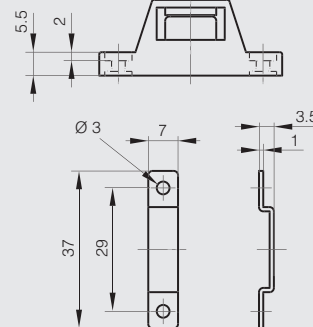
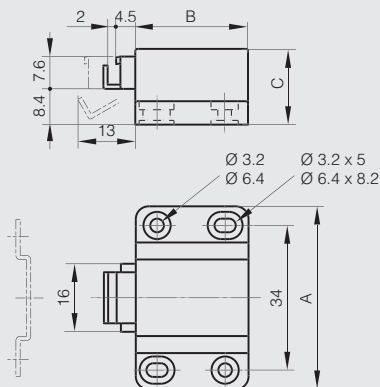
### Touch latch with steel strike

Body in ABS.

Chrome plated strike and hook in black steel.



Part number	Material	Finish	A	B	C	Force	Weight (g)
16-7-4210	polymer	black	43	26.5	17.8	10kg	16.3





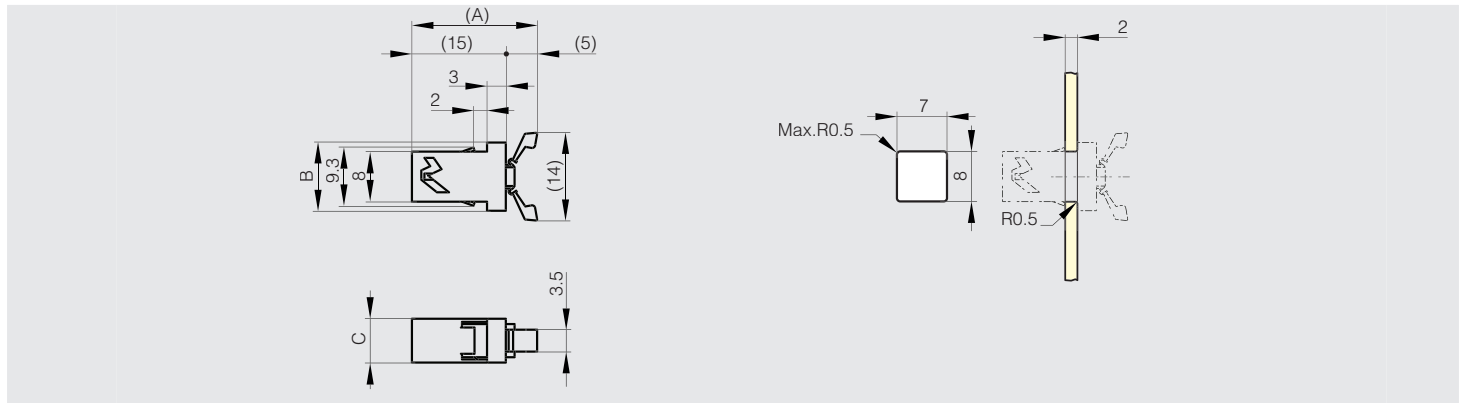
## Touch latches

### Mini touch latch - snap-in installation



Miniature design is ideal for small applications.  
Snap-in style catch. For sheet metal thickness 2 mm.  
Strike sold separately.

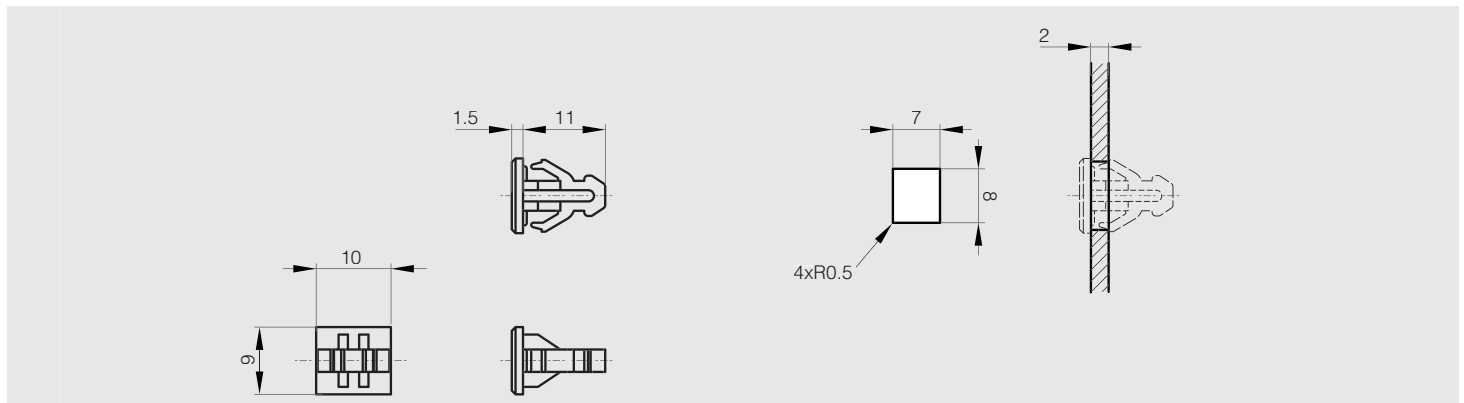
	Part number	Material	Finish	A	B	C	Force	Weight (g)
<b>NEW</b>	<b>16-7-4302</b>	POM/PA	black	20	10.9	7	1.2kg	0.7



### Snap-in counter plate for part number 16-7-4302



	Part number	Material	Finish	Weight (g)
<b>NEW</b>	<b>16-7-4304</b>	POM	black	0.5



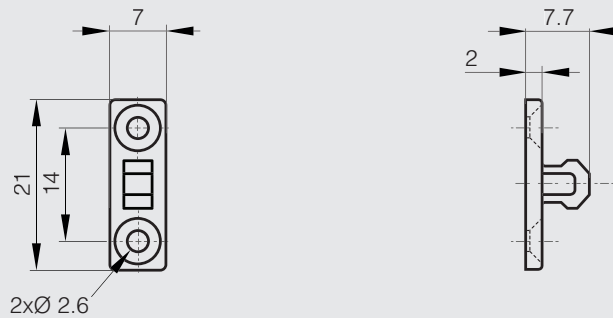


## Touch latches

### Screw mount counter plate for part number 16-7-4302



	Part number	Material	Finish	Weight (g)
<b>NEW</b>	16-7-4303	POM	black	0.4

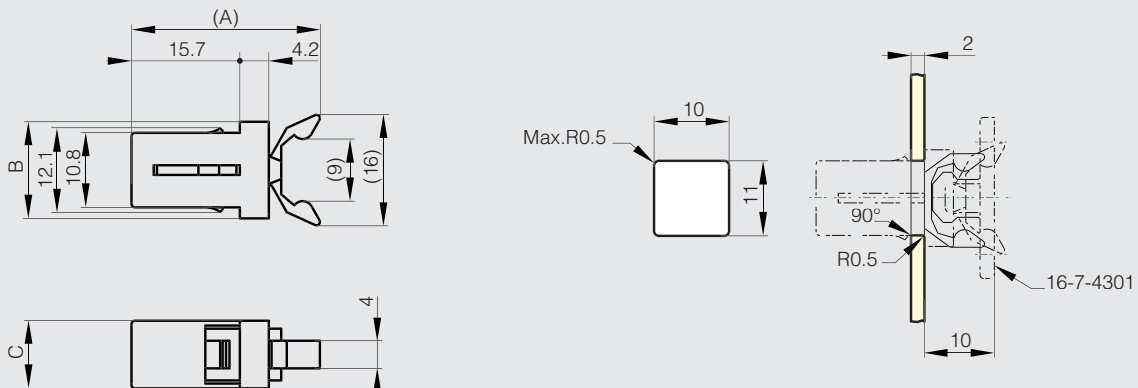


### Touch latch - Snap-in installation



Compact design with strong retaining force (3.5 kg).  
 Snap-in style catch. For sheet metal thickness 2 mm.  
 Strike sold separately.  
 Polymer material: PBT, PA and PCL.

	Part number	Material	Finish	A	B	C	Force	Weight (g)
<b>NEW</b>	16-7-4300	polymer	black	27.3	14	9.8	3.5kg	2.3





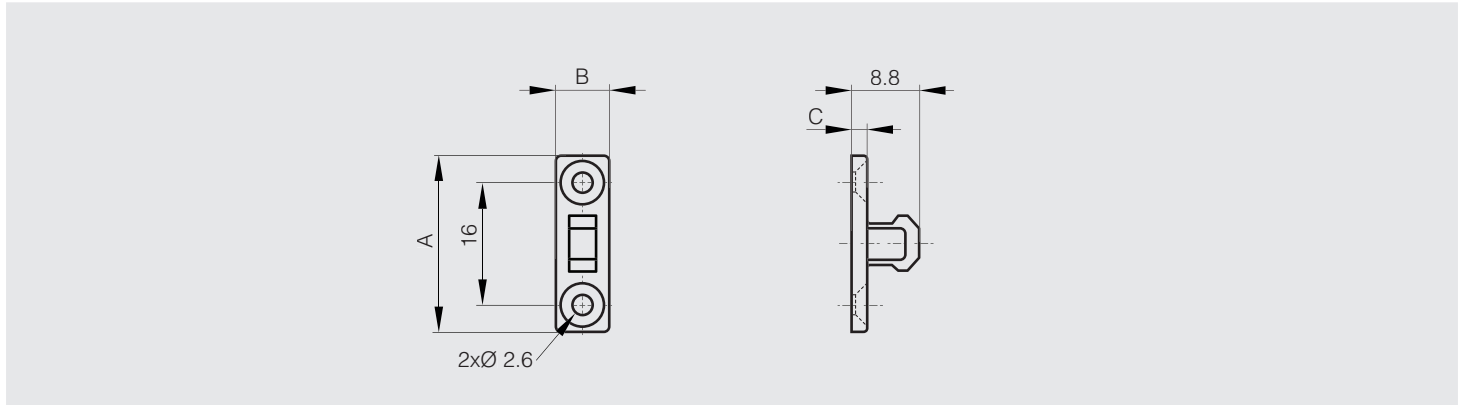


## Touch latches

### Counter plate for part number 16-7-4300



	Part number	Material	Finish	A	B	C	Weight (g)
NEW	16-7-4301	POM	black	23	7	2	1



### Touch latch - Screw mounting - With counter plate



Passed 30,000 open/close cycle test.

Touch latch with floating strike allows for easy alignment.

For overlay door, allow 3 mm gap between door and cabinet frame for push space.

Pulling door with excessive force without unlatching the unit may damage the mechanism.

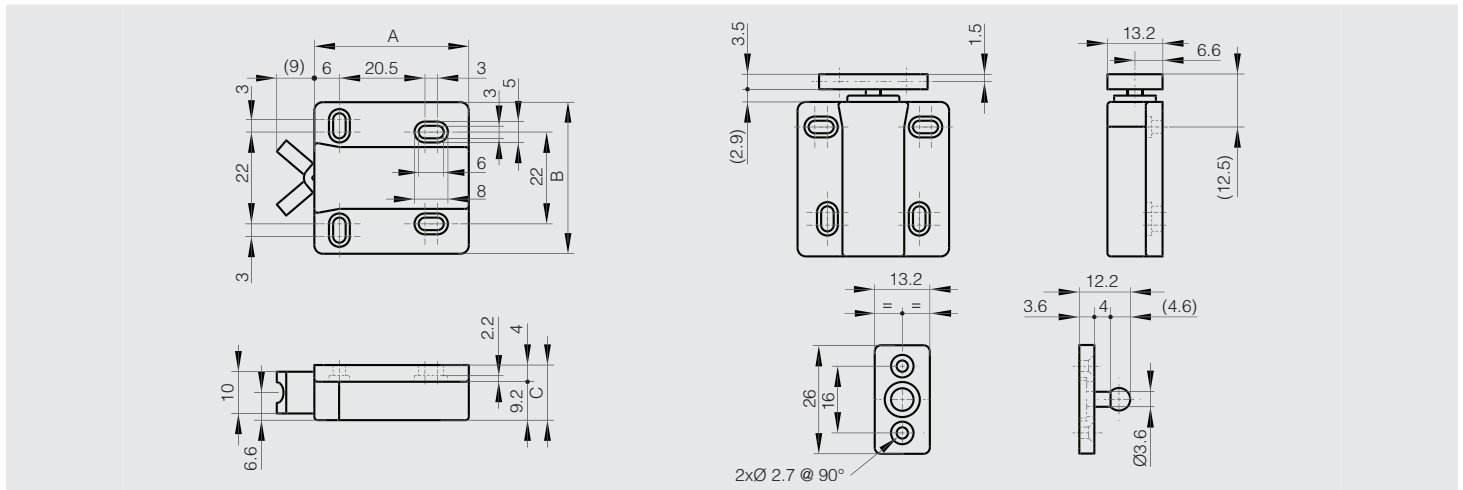
Latch: ABS/POM.

Counter plate: PA.

Comes with screws.



	Part number	Material	Finish	A	B	C	Force	Weight (g)
NEW	16-7-4299	polymer	black	37	36.3	13.2	3kg	15





### Touch latch - Screw mounting - Strong retaining force



Passed 100,000 open/close cycle test.

Strong retaining force: 8 kg.

Floating counter plate for easy alignment.

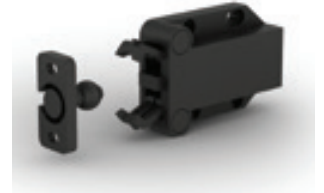
For overlay door, allow 3 mm gap between door and cabinet frame for push space.

Pulling the door with excessive force without unlatching the unit may damage the mechanism.

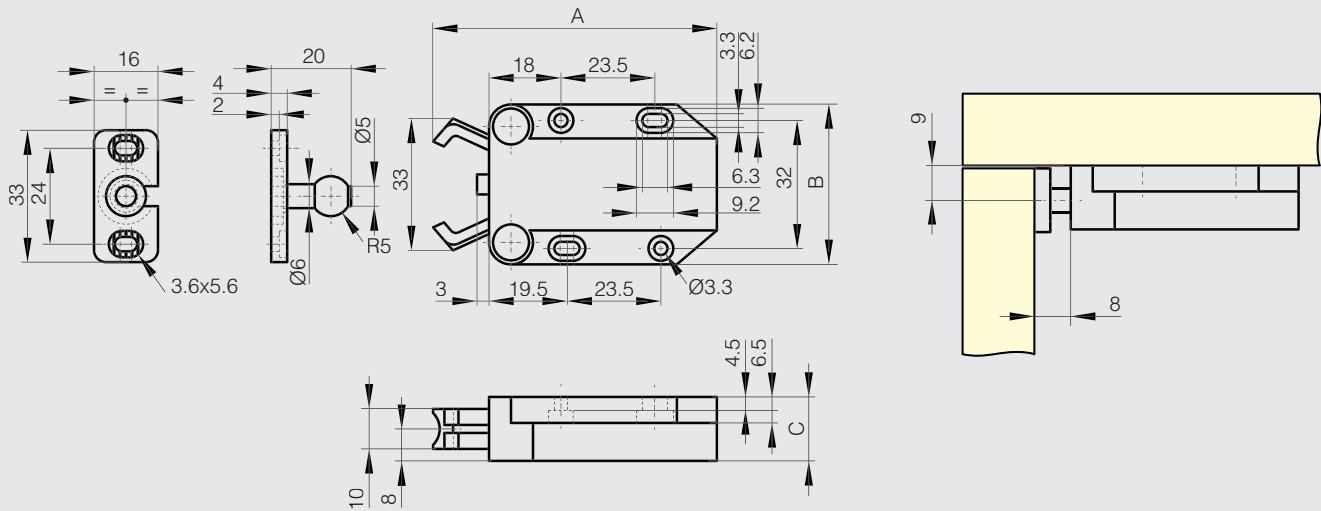
Latch: ABS/POM.

Counter plate: PA.

Comes with screws.



	Part number	Material	Finish	A	B	C	Force	Weight (g)
<b>NEW</b>	<b>16-7-4298</b>	polymer	black	71	40	16	8kg	24





### Snap-in knuckle catch in plastic



Snap-in type body for easy installation on sheet metal applications.

3 panel thicknesses (E) : 0.8 mm, 1.0 mm and 1.2 mm

Cut-out dimensions vary depending on panel thickness.

Internal catch body tolerance of 1.5 mm for ease of alignment.

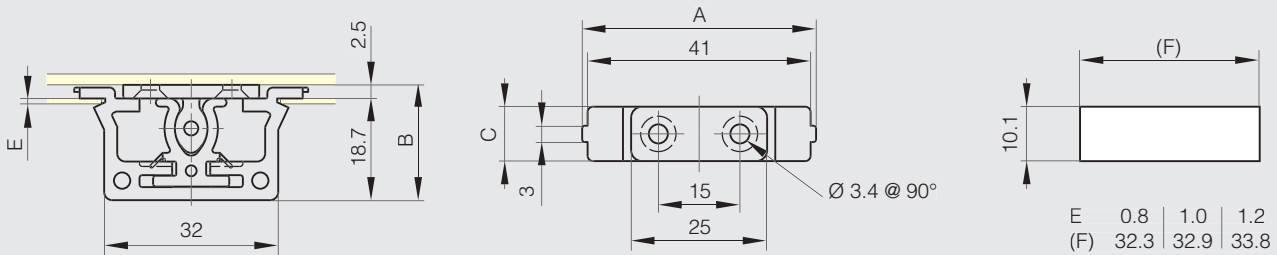
Push-in force : 2.0 kg.

Pulling force : 2.0 kg.

Body in polyacetal (POM) and strike in polyamide (PA).



Part number	Material	Finish	A	B	C	Force	Weight (g)
16-7-4214	polymer	white	43	21.2	10	2kg	5.2



### Plastic catch



Push in force : 5.7 kg

Pulling force : 7.1 kg

Body in polyacetal (POM) and strike in polyamide (PA).

Part number	Material	Finish	A	B	C	Force	Weight (g)
16-7-3860	polymer	white	35.4	30.5	13	7.1kg	4.5

