



Spring loaded latches

Spring-loaded latches - stop in opening position

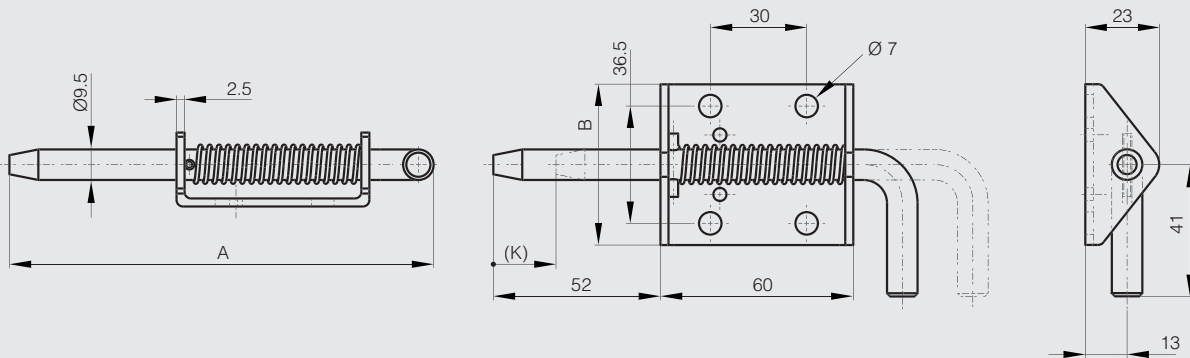
Springloaded bolt



Heavy duty range. No stop when open.

STEEL RoHS

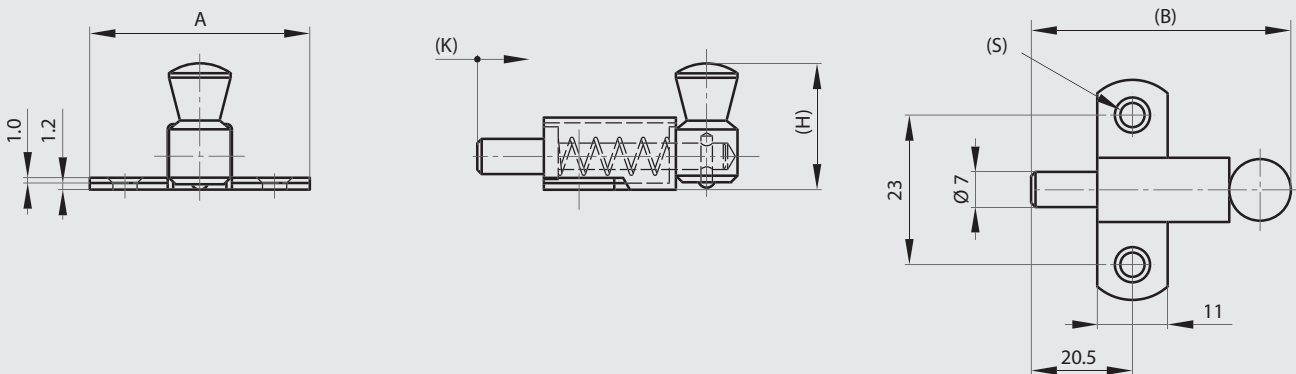
Part number	Material	Finish	A	B	K	Note	Weight (g)
NEW 16-1-9026	steel	zinc plated	132	50	17	no stop	175



Springloaded latch with round bolt

STEEL RoHS

Part number	Material	Finish	A	B	H	K	S	Weight (g)
16-1-3647	steel	zinc plated	35	43.5	19	10	3.5	21



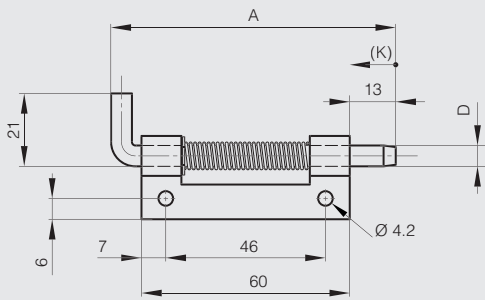


Concealed springloaded pin hinges A

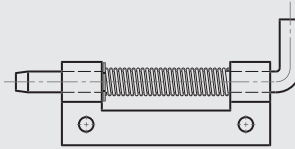
Stainless steel spring. Hinges in raw steel and zinc plated steel with a zinc plated pin. Circlip in 1.4122 stainless steel.



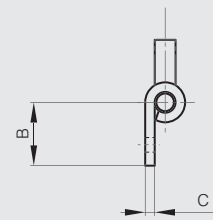
Part number	Material	Finish	A	B	C	D	K	Note	Weight (g)
12-1-3856	steel	raw	82	18.2	2.8	6	12	type 2	46.4
12-1-3857	steel	raw	82	18.2	2.8	6	12	type 1	46.4
12-1-3854	steel	zinc plated	82	18.2	2.8	6	12	type 2	46.4
12-1-3855	steel	zinc plated	82	18.2	2.8	6	12	type 1	46.4
12-1-3858	304 stainless steel	raw	82	18.2	2.8	6	12	type 2	46.4
12-1-3859	304 stainless steel	raw	82	18.2	2.8	6	12	type 1	46.4



12-1-3857 & 12-1-3855 & 12-1-3859



12-1-3856 & 12-1-3854 & 12-1-3858

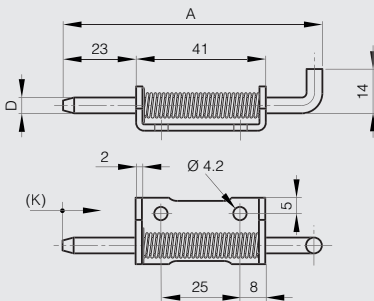


Concealed springloaded pin hinges B

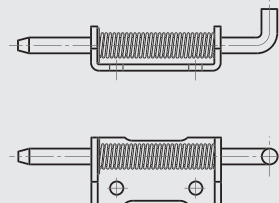
Stainless steel spring. Hinges in raw steel and zinc plated steel with a zinc plated pin. Circlip in 1.4122 stainless steel.



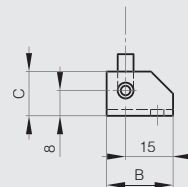
Part number	Material	Finish	A	B	C	D	K	Note	Weight (g)
12-1-3950	steel	raw	82	21	14	5	12	type 2	38.5
12-1-3951	steel	raw	82	21	14	5	12	type 1	38.5
12-1-3860	steel	zinc plated	82	21	14	5	12	type 2	38.5
12-1-3861	steel	zinc plated	82	21	14	5	12	type 1	38.5
12-1-3862	304 stainless steel	raw	82	21	14	5	12	type 2	38.5
12-1-3863	304 stainless steel	raw	82	21	14	5	12	type 1	38.5



12-1-3951 & 12-1-3861 & 12-1-3863



12-1-3950 & 12-1-3860 & 12-1-3862





Spring loaded latches

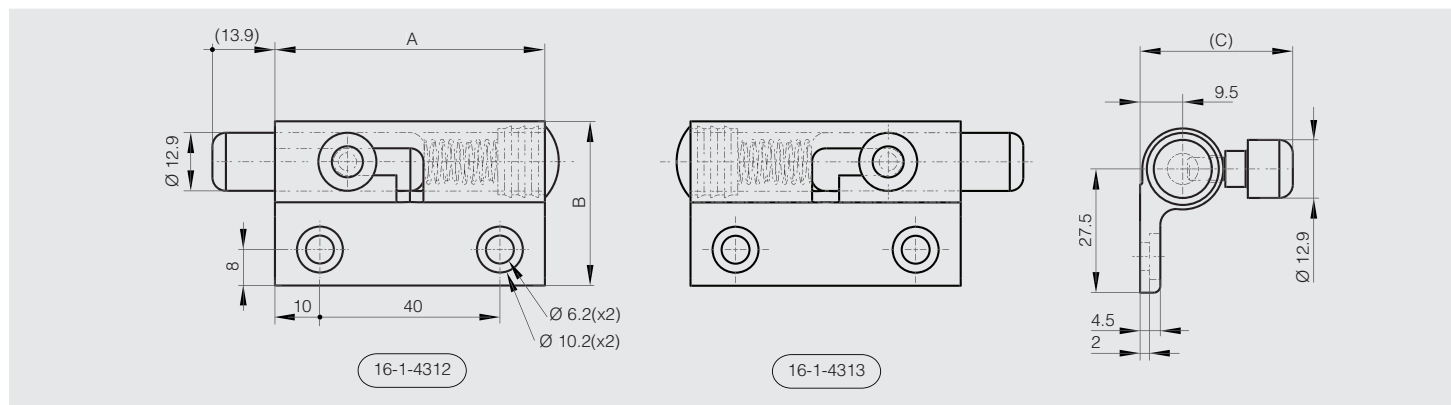
Spring-loaded latches - stop in opening position

Springloaded bolt with locking system in aluminium



Stop when open.
 Body: clear anodised aluminium.
 Shaft and handle: raw aluminium.
 Cap: PE, black.
 Spring: stainless steel.

	Part number	Material	Finish	A	B	C	Note	Weight (g)
NEW	16-1-4312	6060 T5 alu	clear anodised	60	37	33.5	type 2	58
NEW	16-1-4313	6060 T5 alu	clear anodised	60	37	33.5	type 1	58

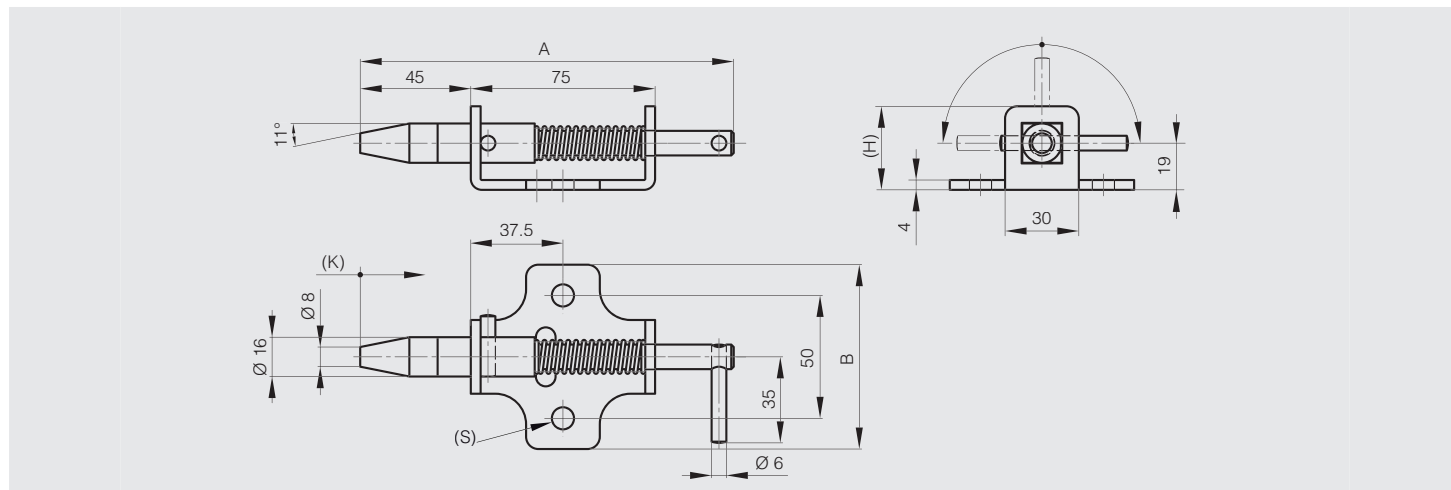


Springloaded bolt with locking system A



Heavy duty range. Stop when open.

	Part number	Material	Finish	A	B	H	K	S	Weight (g)
	16-1-4034	steel	zinc plated	152	75	34	20	9	340



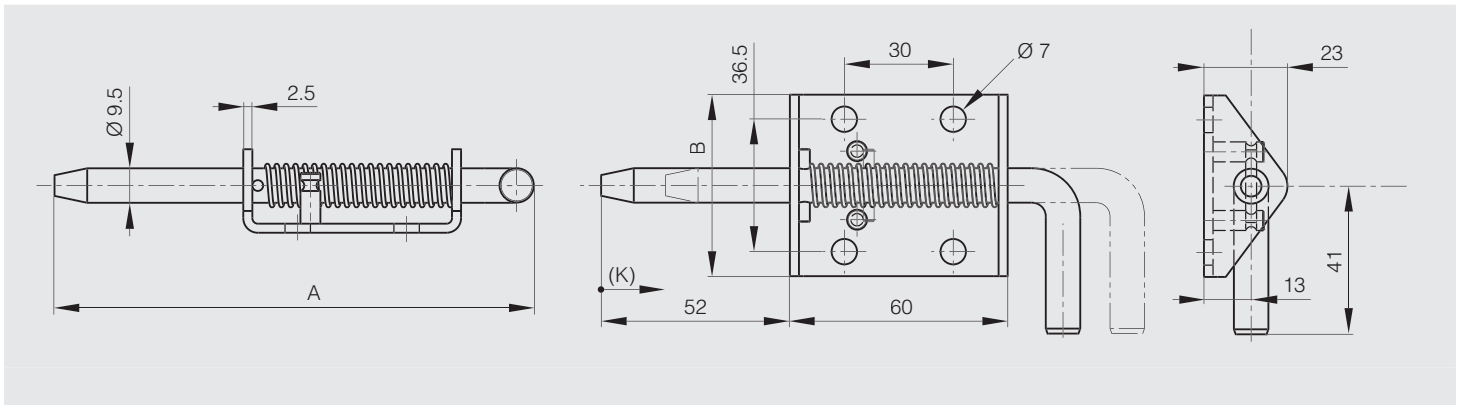


Springloaded bolt with locking system B



Heavy duty range. Stop when open.

Part number	Material	Finish	A	B	K	Weight (g)
16-1-9007	steel	zinc plated	132	50	17	175
NEW 16-1-9025	304 stainless steel	raw	132	50	17	170



Push barrel bolt

Stainless steel latch with steel shaft and plastic button.



Part number	Material	Finish	A	B	C	Weight (g)
16-1-9008	stainless steel	raw	64	33.5	15	44

