

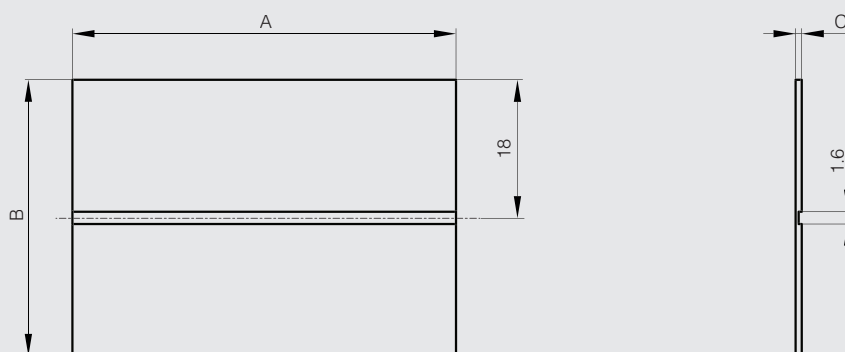
Carbon Kevlar hinges - 36 mm width



Hinge is constructed of rigid leaves and a flex unit.
 The rigid leaves are woven carbon fibre in an epoxy matrix.
 The Kevlar flex units are impregnated with a flexible urethane.
 Design for bonding.
 No metallic component. Ultra light, ultra thin.



| | Part number | Material | Finish | A | B | C | Weight (g) |
|-----|-------------|-----------------|--------|-----|----|-----|------------|
| NEW | 54-7-3600 | carbon / Kevlar | black | 50 | 36 | 0.8 | 2 |
| NEW | 54-7-3601 | carbon / Kevlar | black | 100 | 36 | 0.8 | 3 |



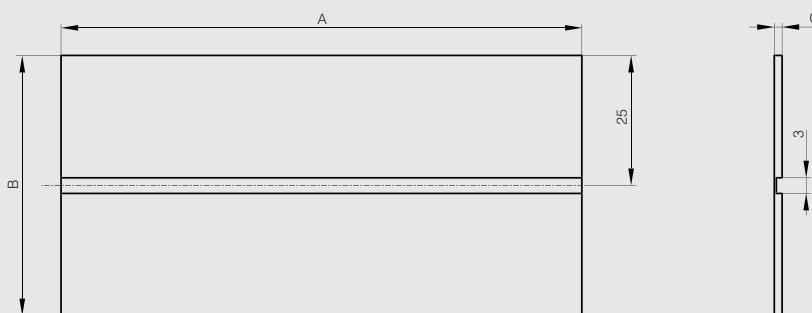
Carbon Kevlar hinges - 50 mm width



Hinge is constructed of rigid leaves and a flex unit.
 The rigid leaves are woven carbon fibre in an epoxy matrix.
 The Kevlar flex units are impregnated with a flexible urethane.
 Design for bond or screws assembly.
 Part number 54-7-3602 tested to over one million cycles through an 80° arc.
 No metallic component. Ultra light, ultra thin.



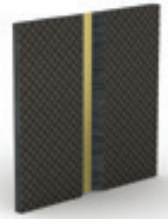
| | Part number | Material | Finish | A | B | C | Weight (g) |
|-----|-------------|-----------------|--------|-----|----|-----|------------|
| NEW | 54-7-3602 | carbon / Kevlar | black | 50 | 50 | 1.5 | 4 |
| NEW | 54-7-3603 | carbon / Kevlar | black | 100 | 50 | 1.5 | 9 |
| NEW | 54-7-3604 | carbon / Kevlar | black | 600 | 50 | 1.5 | 51 |



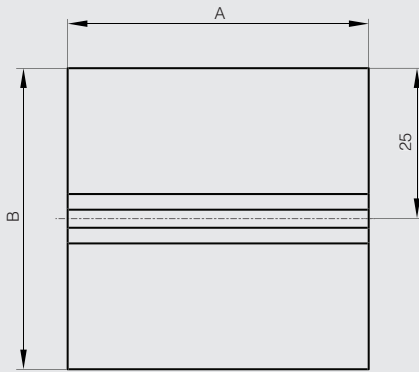
Carbon Kevlar hinges with glass fiber - 50 mm width



Hinge is constructed of rigid leaves and a flex unit.
 The rigid leaves are a glass fibre carbon hybrid.
 The Kevlar flex units are impregnated with a flexible urethane.
 Design for bond or screws assembly.
 No metallic component. Ultra light, ultra thin.



| | Part number | Material | Finish | A | B | C | Weight (g) |
|-----|-------------|-------------------------------|--------|-----|----|-----|------------|
| NEW | 54-7-3605 | carbon / glass fibre / Kevlar | black | 50 | 50 | 2.5 | 8 |
| NEW | 54-7-3606 | carbon / glass fibre / Kevlar | black | 100 | 50 | 2.5 | 16 |



Square design hinges with countersunk holes

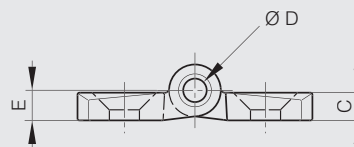
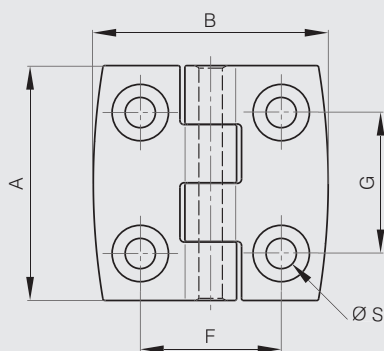
Hinges are made of 30% GF polyamide, pins are in 304 stainless steel.

UL 94 V-0 classification: please contact us.

White color: please contact us.



| Part number | Material | Finish | A | B | C | D | E | F | G | S | Weight (g) |
|-------------|-----------|--------|----|----|-----|---|-----|----|----|-----|------------|
| 54-1-3513 | polyamide | black | 30 | 30 | 3 | 3 | 3.5 | 18 | 18 | 3.2 | 6 |
| 54-1-3514 | polyamide | black | 40 | 40 | 5.2 | 4 | 5.7 | 25 | 25 | 5.3 | 12 |
| 54-1-3516 | polyamide | black | 50 | 50 | 5.9 | 5 | 6.4 | 30 | 30 | 6.4 | 22 |
| 54-1-3518 | polyamide | black | 60 | 60 | 6.5 | 6 | 7 | 36 | 36 | 6.4 | 32 |



Square design hinges with studs

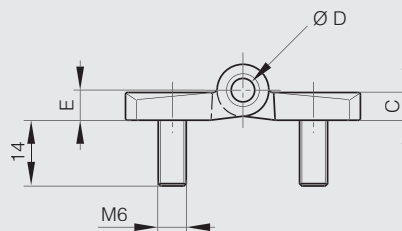
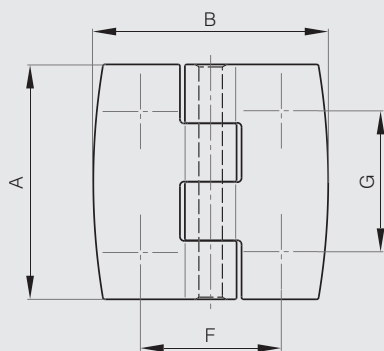
Hinges are made of 30% GF polyamide, pins are in 304 stainless steel.

UL 94 V-0 classification: please ask us.

White color: please ask us.



| Part number | Material | Finish | A | B | C | D | E | F | G | Weight (g) |
|-------------|-----------|--------|----|----|-----|---|---|----|----|------------|
| 54-1-3519 | polyamide | black | 60 | 60 | 6.5 | 6 | 7 | 36 | 36 | 54 |



Symmetrical design hinges

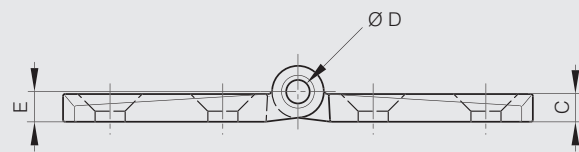
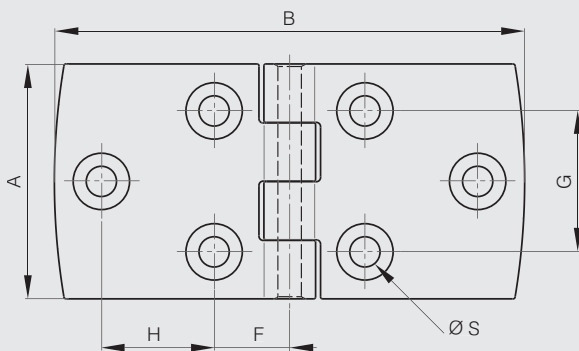
Hinges are made of 30% GF polyamide, pins are in 304 stainless steel.

UL 94 V-0 classification: please contact us.

White color: please contact us.



| Part number | Material | Finish | A | B | C | D | E | F | G | H | S | Weight (g) |
|-------------|-----------|--------|----|-----|-----|---|-----|------|----|----|-----|------------|
| 54-1-3520 | polyamide | black | 40 | 80 | 5.2 | 4 | 5.7 | 13.5 | 25 | 19 | 5.3 | 20 |
| 54-1-3522 | polyamide | black | 40 | 120 | 5.2 | 4 | 5.7 | 14.5 | 25 | 38 | 5.3 | 25 |
| 54-1-3540 | polyamide | black | 50 | 100 | 5.9 | 5 | 6.4 | 16 | 30 | 24 | 6.4 | 34 |
| 54-1-3524 | polyamide | black | 60 | 120 | 6.5 | 6 | 7 | 18 | 36 | 30 | 6.4 | 34 |



Asymmetrical design hinges

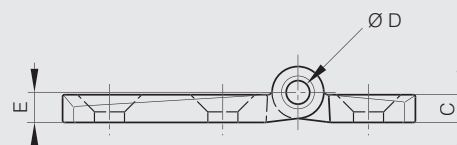
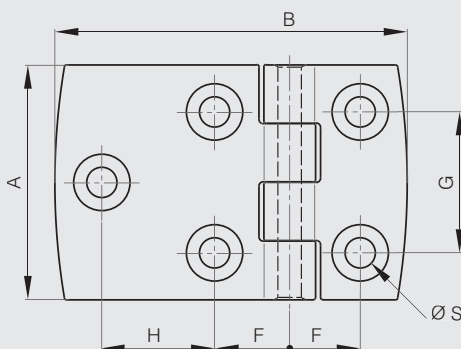
Hinges are made of 30% GF polyamide, pins are in 304 stainless steel.

UL 94 V-0 classification: please contact us.

White color: please contact us.



| Part number | Material | Finish | A | B | C | D | E | F | G | H | S | Weight (g) |
|-------------|-----------|--------|----|----|-----|---|-----|------|----|----|-----|------------|
| 54-1-3528 | polyamide | black | 40 | 60 | 5.2 | 4 | 5.7 | 13 | 25 | 19 | 5.3 | 16 |
| 54-1-3536 | polyamide | black | 40 | 80 | 5.2 | 4 | 5.7 | 13.5 | 25 | 38 | 5.3 | 18 |
| 54-1-3538 | polyamide | black | 50 | 75 | 5.9 | 5 | 6.4 | 15.5 | 30 | 24 | 6.4 | 28 |
| 54-1-3532 | polyamide | black | 60 | 90 | 6.5 | 6 | 7 | 18 | 36 | 30 | 6.4 | 40 |

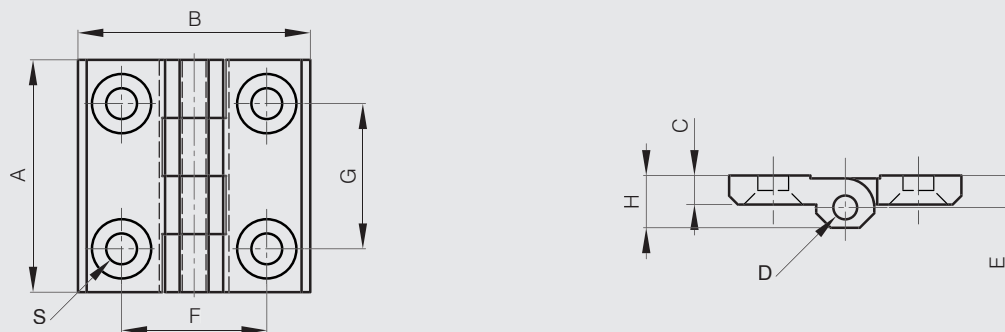


Polyamide hinges with countersunk holes

Hinges are made of 30% GF polyamide, pins are in 304 stainless steel.
A full product data sheet is available on our website.



| Part number | Material | Finish | A | B | C | D | E | F | G | H | S | Weight (g) |
|-------------|-----------|--------|----|----|---|---|-----|----|----|------|-----|------------|
| 54-1-3029 | polyamide | black | 40 | 40 | 5 | 4 | 5.5 | 25 | 25 | 9 | 5.3 | 13.5 |
| 54-1-3030 | polyamide | black | 50 | 50 | 6 | 6 | 6.5 | 30 | 30 | 11.5 | 6.4 | 28.5 |

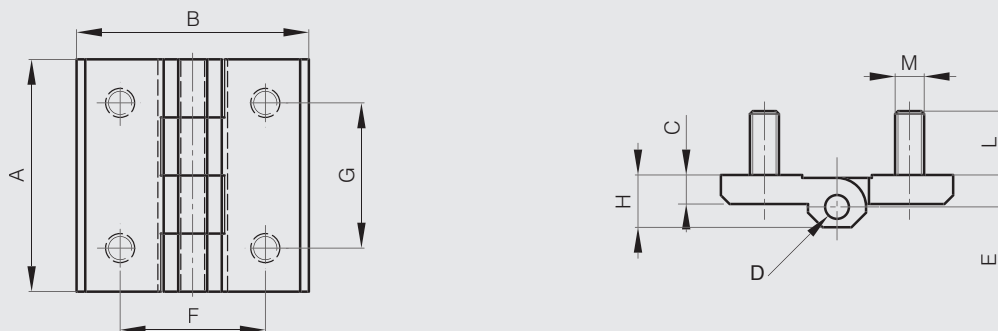


Polyamide hinges with studs

Hinges are made of 30% GF polyamide, pins are in 304 stainless steel.
A full product data sheet is available on our website.



| Part number | Material | Finish | A | B | C | D | E | F | G | H | L | M | Weight (g) |
|-------------|-----------|--------|----|----|---|---|-----|----|----|------|----|----|------------|
| 54-1-3031 | polyamide | black | 40 | 40 | 5 | 4 | 5.5 | 25 | 25 | 9 | 11 | M5 | 56 |
| 54-1-3032 | polyamide | black | 50 | 50 | 6 | 6 | 6.5 | 30 | 30 | 11.5 | 15 | M6 | 76 |

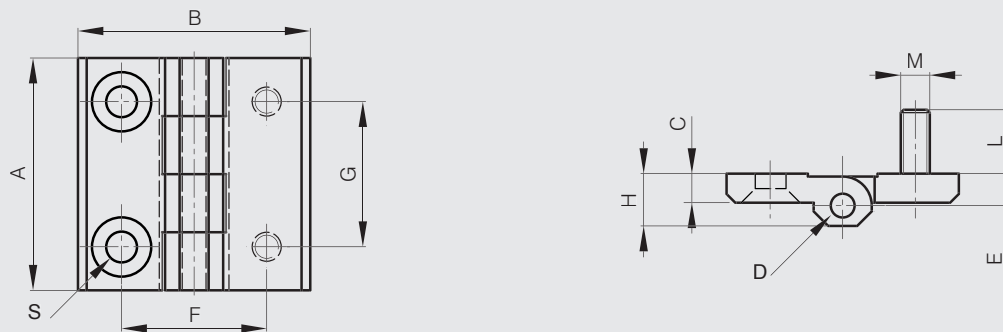


Polyamide hinges combined studs and holes

Hinges are made of 30% GF polyamide, pins are in 304 stainless steel.
A full product data sheet is available on our website.



| Part number | Material | Finish | A | B | C | D | E | F | G | H | L | M | S | Weight (g) |
|-------------|-----------|--------|----|----|---|---|-----|----|----|------|----|----|-----|------------|
| 54-1-3033 | polyamide | black | 40 | 40 | 5 | 4 | 5.5 | 25 | 25 | 9 | 11 | M5 | 5.3 | 50 |
| 54-1-3034 | polyamide | black | 50 | 50 | 6 | 6 | 6.5 | 30 | 30 | 11.5 | 15 | M6 | 6.4 | 50 |

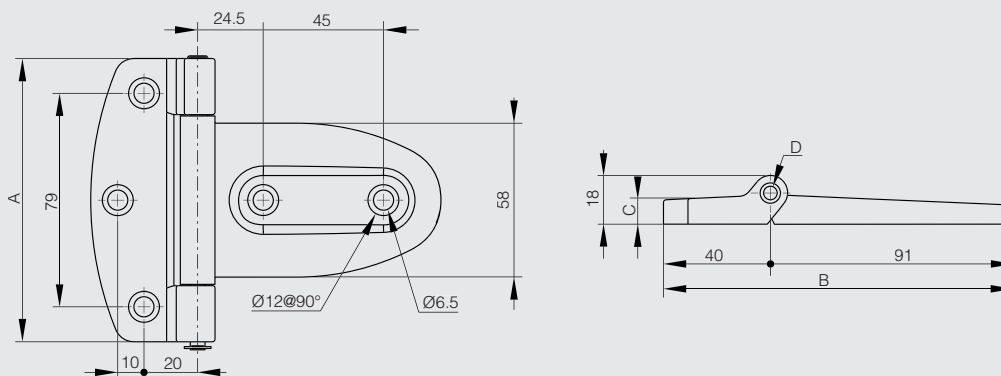


Heavy duty plastic hinge - 180° opening

Nickel plated steel pin. Max. 180° opening.



| Part number | Material | Finish | A | B | C | D | Weight (g) |
|-------------|-----------|--------|-----|-----|-----|---|------------|
| 54-1-9000 | polyamide | black | 108 | 131 | 9.5 | 6 | 98 |

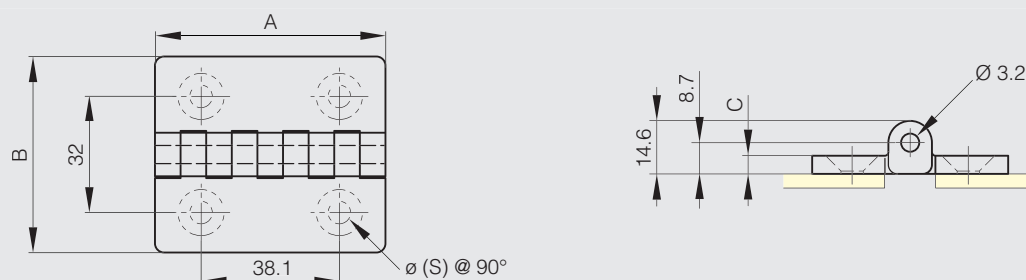


Plastic hinges 63.5 mm long

Same material for pin and leaves.



| Part number | Material | Finish | A | B | C | S | Note | Weight (g) |
|-------------|---------------|-------------|------|----|---|-----|-----------|------------|
| 54-7-3018 | polypropylene | white | 63.5 | 54 | 5 | | undrilled | 20 |
| 54-7-3019 | polypropylene | black | 63.5 | 54 | 5 | | undrilled | 20 |
| 54-7-3022 | polycarbonate | transparent | 63.5 | 54 | 5 | | undrilled | 20 |
| 54-7-3028 | polyethylene | natural | 63.5 | 54 | 5 | 6.2 | drilled | 20 |

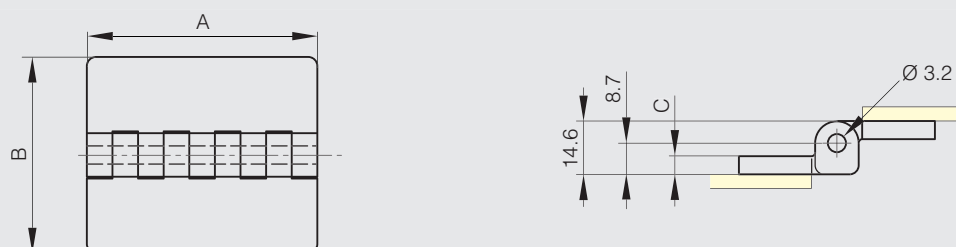


Plastic hinges 63.5 mm long with reversed leaves

Same material for pin and leaves.



| Part number | Material | Finish | A | B | C | Weight (g) |
|-------------|---------------|-------------|------|----|---|------------|
| 54-7-3023 | polypropylene | white | 63.5 | 54 | 5 | 20 |
| 54-7-3024 | polypropylene | black | 63.5 | 54 | 5 | 20 |
| 54-7-3027 | polycarbonate | transparent | 63.5 | 54 | 5 | 20 |

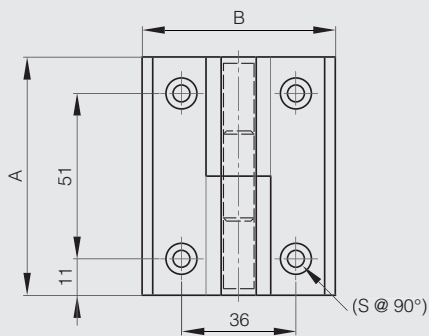


Lift-off hinges in plastic

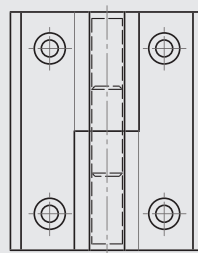
Hinges are made of 15% GF polyamide, pins are in 303 stainless steel.



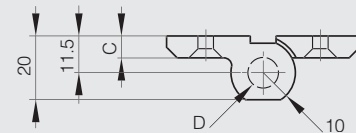
| Part number | Material | Finish | A | B | C | D | S | Note | Weight (g) |
|-------------|-----------|--------|----|----|---|-----|---|--------|------------|
| 14-7-3722 | polyamide | black | 74 | 60 | 7 | 9.5 | 5 | type 1 | 53 |
| 14-7-3723 | polyamide | black | 74 | 60 | 7 | 9.5 | 5 | type 2 | 53 |



14-7-3722



14-7-3723



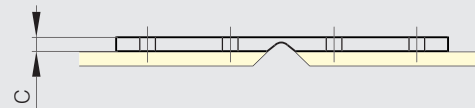
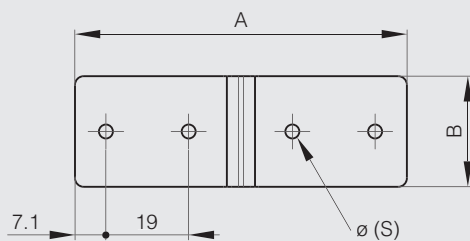
Plastic hinges 25.4 mm long



Technical features:

- Temperature: -40°C up to +80°C.
- Can be fixed with: rivets, screws, nails or clamps.
- Chemical resistance: oil, solvents, sea water and most chemical agents.
- Tensile resistance: 180 N/cm.
- Material offers excellent fatigue resistance.

| Part number | Material | Finish | A | B | C | S | Weight (g) |
|-------------|---------------|--------|------|------|-----|-----|------------|
| 54-7-3000 | polypropylene | white | 25.4 | 76.2 | 3.2 | 3.2 | 5 |
| 54-7-3002 | polypropylene | black | 25.4 | 76.2 | 3.2 | 3.2 | 5 |



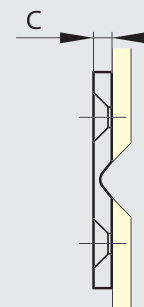
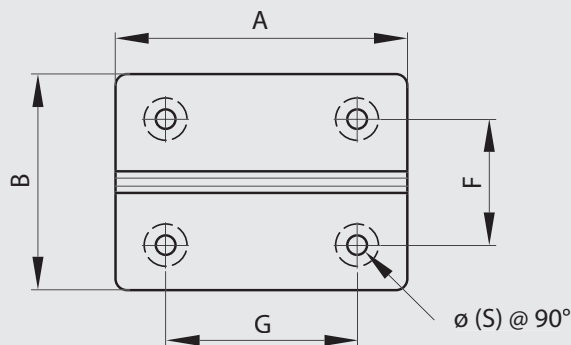
Plastic hinges 38.1 mm and 50.8 mm long



Technical features:

- Temperature: -40°C up to +80°C.
- Can be fixed with: rivets, screws, nails or clamps.
- Chemical resistance: oil, solvents, sea water and most chemical agents.
- Tensile resistance: 180 N/cm.
- Material offers excellent fatigue resistance.

| Part number | Material | Finish | A | B | C | F | G | S | Weight (g) |
|-------------|---------------|--------|------|------|------|------|------|------|------------|
| 54-7-3006 | polypropylene | white | 38.1 | 25.4 | 2 | 15.9 | 28.6 | 3.43 | 5 |
| 54-7-3008 | polypropylene | black | 38.1 | 25.4 | 2 | 15.9 | 28.6 | 3.43 | 5 |
| 54-7-3003 | polypropylene | white | 50.8 | 38.1 | 3.17 | 22.2 | 33.3 | 3.43 | 5 |
| 54-7-3005 | polypropylene | black | 50.8 | 38.1 | 3.17 | 22.2 | 33.3 | 3.43 | 5 |



Plastic hinges 76.2 mm long

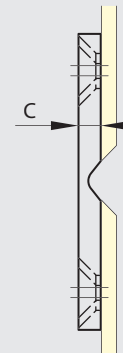
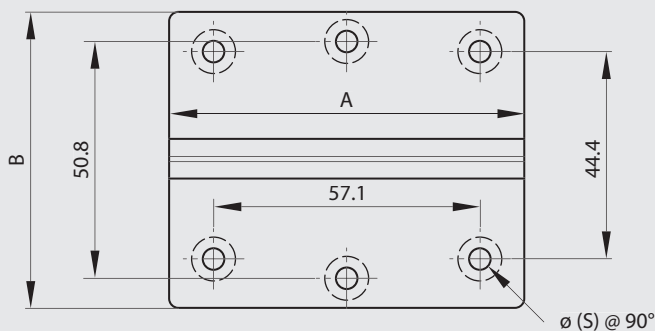


Technical features:

- Temperature: -40°C up to +80°C.
- Can be fixed with: rivets, screws, nails or clamps.
- Chemical resistance: oil, solvents, sea water and most chemical agents.
- Tensile resistance: 180 N/cm.
- Material offers excellent fatigue resistance.



| Part number | Material | Finish | A | B | C | S | Weight (g) |
|-------------|---------------|--------|------|------|------|------|------------|
| 54-7-3009 | polypropylene | white | 76.2 | 63.5 | 4.76 | 4.62 | 16 |
| 54-7-3011 | polypropylene | black | 76.2 | 63.5 | 4.76 | 4.62 | 16 |



Plastic hinges 88.9 mm and 101.6 mm long

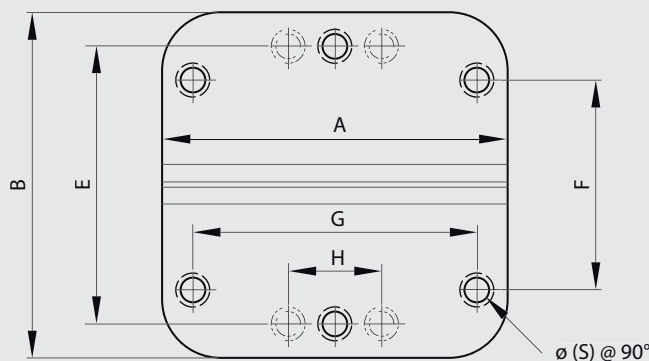


Technical features:

- Temperature: -40°C up to +80°C.
- Can be fixed with: rivets, screws, nails or clamps
- Chemical resistance: oil, solvents, sea water and most chemical agents.
- Tensile resistance: 180 N/cm.
- Material offers excellent fatigue resistance.



| Part number | Material | Finish | A | B | C | E | F | G | H | S | Weight (g) |
|-------------|---------------|--------|-------|-------|------|------|----|------|------|---|------------|
| 54-7-3012 | polypropylene | white | 88.9 | 88.9 | 6.35 | 71.4 | 54 | 73 | | 6 | 35 |
| 54-7-3014 | polypropylene | black | 88.9 | 88.9 | 6.35 | 71.4 | 54 | 73 | | 6 | 35 |
| 54-7-3015 | polypropylene | white | 101.6 | 101.6 | 6.35 | 79.4 | 54 | 83.4 | 27.8 | 8 | 50 |
| 54-7-3017 | polypropylene | black | 101.6 | 101.6 | 6.35 | 79.4 | 54 | 83.4 | 27.8 | 8 | 50 |



Polymer continuous hinges in 15.25 meter rolls



Technical features:

- Temperature: -40°C up to +80°C.
- Can be fixed with: rivets, screws, nails or clamps.
- Chemical resistance: oil, solvents, sea water and most chemical agents.
- Tensile resistance: 180 N/cm.
- Material offers excellent fatigue resistance.

| Part number | Material | Finish | B | C | Weight (g) |
|-------------|---------------|--------|------|-----|------------|
| 44-7-3000 | polypropylene | white | 28.6 | 3.2 | 1050 |
| 44-7-3001 | polypropylene | grey | 28.6 | 3.2 | 1050 |
| 44-7-3002 | polypropylene | black | 28.6 | 3.2 | 1050 |
| 44-7-3003 | polypropylene | white | 38.1 | 3.2 | 1450 |
| 44-7-3004 | polypropylene | grey | 38.1 | 3.2 | 1450 |
| 44-7-3005 | polypropylene | black | 38.1 | 3.2 | 1450 |
| 44-7-3006 | polypropylene | white | 50.8 | 3.2 | 2300 |
| 44-7-3007 | polypropylene | grey | 50.8 | 3.2 | 2300 |
| 44-7-3008 | polypropylene | black | 50.8 | 3.2 | 2300 |
| 44-7-3009 | polypropylene | white | 76.2 | 3.2 | 2900 |
| 44-7-3010 | polypropylene | grey | 76.2 | 3.2 | 2900 |
| 44-7-3011 | polypropylene | black | 76.2 | 3.2 | 2900 |

